

SEC. 24, 25, AND 36, T. 26 S., R. 6 W., W.M.

FILED
 Date: 4-15-2004 Pr. JC
 This survey consists of:
 Map: ST HWY 15-016A-4
 Name:
 Corner File:
 DOUGLAS COUNTY
 SURVEYOR

11851-3
 (TRUE LOCATION
 OFF MAP)

SURVEY NARRATIVE

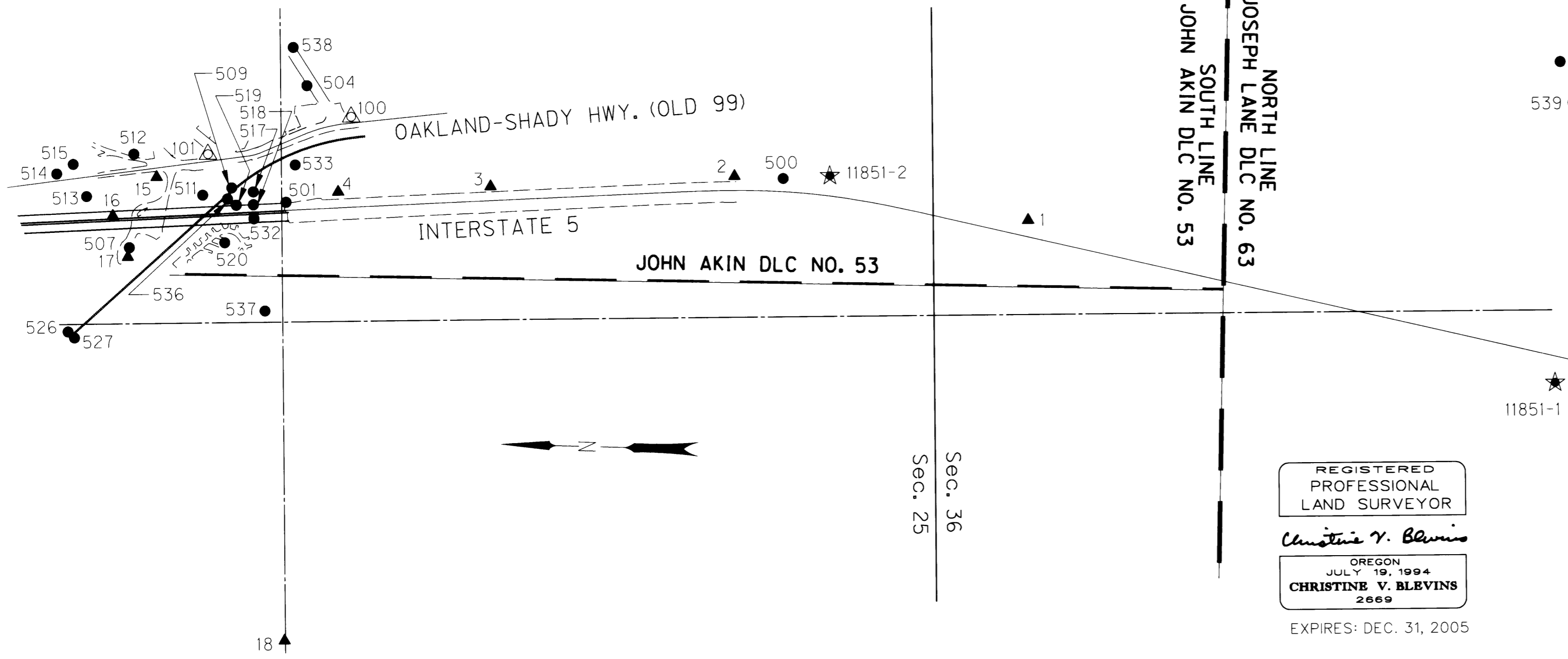
THE PURPOSE OF THIS SURVEY WAS TO ESTABLISH HORIZONTAL CONTROL AND RETRACE THE STATE HIGHWAY'S RIGHTS OF WAY BOUNDARIES FOR AN OREGON DEPARTMENT OF TRANSPORTATION (ODOT) PROJECT CALLED "I-5: EXIT 129/ NORTH UMPQUA (WINCHESTER) BRIDGES". THE CONTROL NETWORK AND MONUMENT TIES WERE CONDUCTED BY AN ODOT SURVEY CREW FROM ROSEBURG BETWEEN MAY 7, 2003 AND JANUARY 30, 2004. THE ORIGINAL FIELD NOTES ARE ARCHIVED IN SALEM AS BOOK #4073.

THE BASIS OF BEARING AND COORDINATES ARE BASED ON AN ODOT GEODETIC SURVEY OF POINTS 11851-1, 11851-2, 11851-3, AND AKIN2. THIS SURVEY IS FILED WITH DOUGLAS COUNTY AS MAP #M143-67, A-D. TO CONVERT THESE METRIC STATE PLANE COORDINATES TO ENGLISH LOCAL DATUM PLANE COORDINATES DIVIDE BY A CONVERSION FACTOR OF 0.99987087 TO GET METRIC LDP COORDINATES, THEN DIVIDE BY 0.3048 TO CONVERT FROM METRIC TO ENGLISH.

A LEICA "TCA 1800" TOTAL STATION (SERIAL #418939) WAS USED TO RUN THE NETWORK AND TIE EXISTING MONUMENTS. THE INSTRUMENT HAS THE FOLLOWING ACCURACY: STANDARD ANGULAR ERROR OF +/- 1 SECOND AND A STANDARD DISTANCE ERROR OF +/- 2MM, +/- 2 PPM.

THE NETWORK WAS ADJUSTED USING A LEAST SQUARES ROUTINE WITH "CAICE" SOFTWARE. THIS ADJUSTMENT PRODUCED ANGULAR AND DISTANCE RESIDUALS (THE AMOUNT THE FIELD OBSERVED MEASUREMENTS WERE CHANGED DUE TO THE ADJUSTMENT). 88% OF THE DISTANCE RESIDUALS WERE EQUAL TO OR LESS THAN 0.016 FOOT, AND 100% WERE EQUAL TO OR LESS THAN 0.034 FOOT. 67% OF THE ANGULAR RESIDUALS WERE EQUAL TO OR LESS THAN 3 SECONDS, AND 100% WERE EQUAL TO OR LESS THAN 13.6 SECONDS. THERE IS A 95% PROBABILITY THAT THE FINAL POSITIONS OF THE NETWORK POINTS ARE WITHIN THE ERROR ELLIPSES AS SHOWN ON THE "CONFIDENCE LEVEL LIMITS" TABLE SHOWN ON SHEET 3 OF 11.

THE PROPERTY LINES ADJACENT TO THE STATE HIGHWAYS AS SHOWN ON THIS SURVEY ARE NOT INTENDED TO REPRESENT INDIVIDUAL BOUNDARY SURVEYS FOR EACH PARCEL. THE PROPERTY LINES WERE PROTRACTED OUT USING TIED MONUMENTS, DEED DESCRIPTIONS, AND RECORD MEASUREMENTS FROM FILED SURVEYS.



NETWORK SCHEMATIC
 NOT TO SCALE

LEGEND	
▲	SET NETWORK POINT
★	FOUND GPS STATION
●	SET AUXILIARY POINT
△	FOUND MONUMENT USED AS NETWORK POINT

REGISTERED
 PROFESSIONAL
 LAND SURVEYOR
Christine V. Blevins
 OREGON
 JULY 19, 1994
CHRISTINE V. BLEVINS
 2669
 EXPIRES: DEC. 31, 2005

OREGON DEPARTMENT OF TRANSPORTATION
 HORIZONTAL CONTROL, RECOVERY AND RETRACEMENT MAP
 I-5: EXIT 129 / N. UMPQUA RIVER (WINCHESTER) BRIDGES
 INTERSTATE 5 AND OAKLAND-SHADY HIGHWAY
 DOUGLAS COUNTY
 MARCH 24, 2004 FOR ODOT REGION 3
 3500 NW STEWART PARKWAY ROSEBURG, OR 97470
 SHEET 1 OF 11