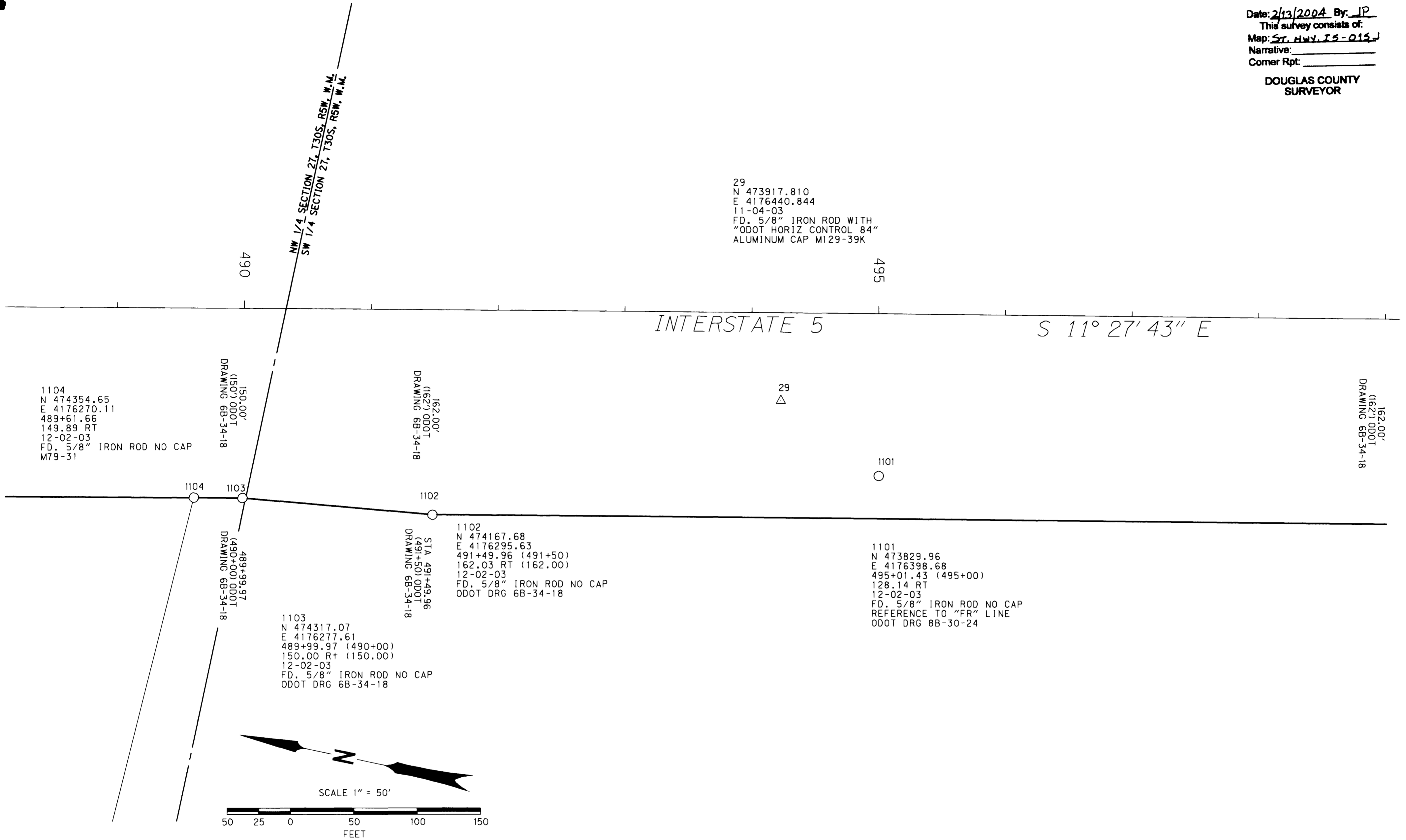


ENGLISH

NW 1/4 SECTION 27, SW 1/4 SECTION 27, T30S, R5W, W.M.

FILED
Date: 2/13/2004 By: JP
This survey consists of:
Map: ST. HWY. 15-015J
Narrative:
Corner Rpt:
DOUGLAS COUNTY SURVEYOR

29
N 473917.810
E 4176440.844
11-04-03
FD. 5/8" IRON ROD WITH
"ODOT HORIZ CONTROL 84"
ALUMINUM CAP M129-39K



LEGEND

- ▲ SET NETWORK POINT AS NOTED
- △ FOUND NETWORK POINT AS PER M129-39
- FOUND MONUMENT AS NOTED
- RESOLVED RIGHT OF WAY LINE
- - - EDGE OF PAVEMENT
- TOP OF CURB

REGISTERED PROFESSIONAL LAND SURVEYOR
Jody Prasler
JODY PRASLER
2408
EXPIRES 12-31-2005

OREGON DEPARTMENT OF TRANSPORTATION
HORIZONTAL CONTROL, RECOVERY AND RETRACTMENT MAP
INTERSTATE 5 AT EXIT 99
DOUGLAS COUNTY, OREGON
FEBRUARY 2004 FOR ODOT REGION 3
3500 NW STEWART PARKWAY, ROSEBURG, OR 97470
SCALE 1" = 50' SHEET 10 OF 10