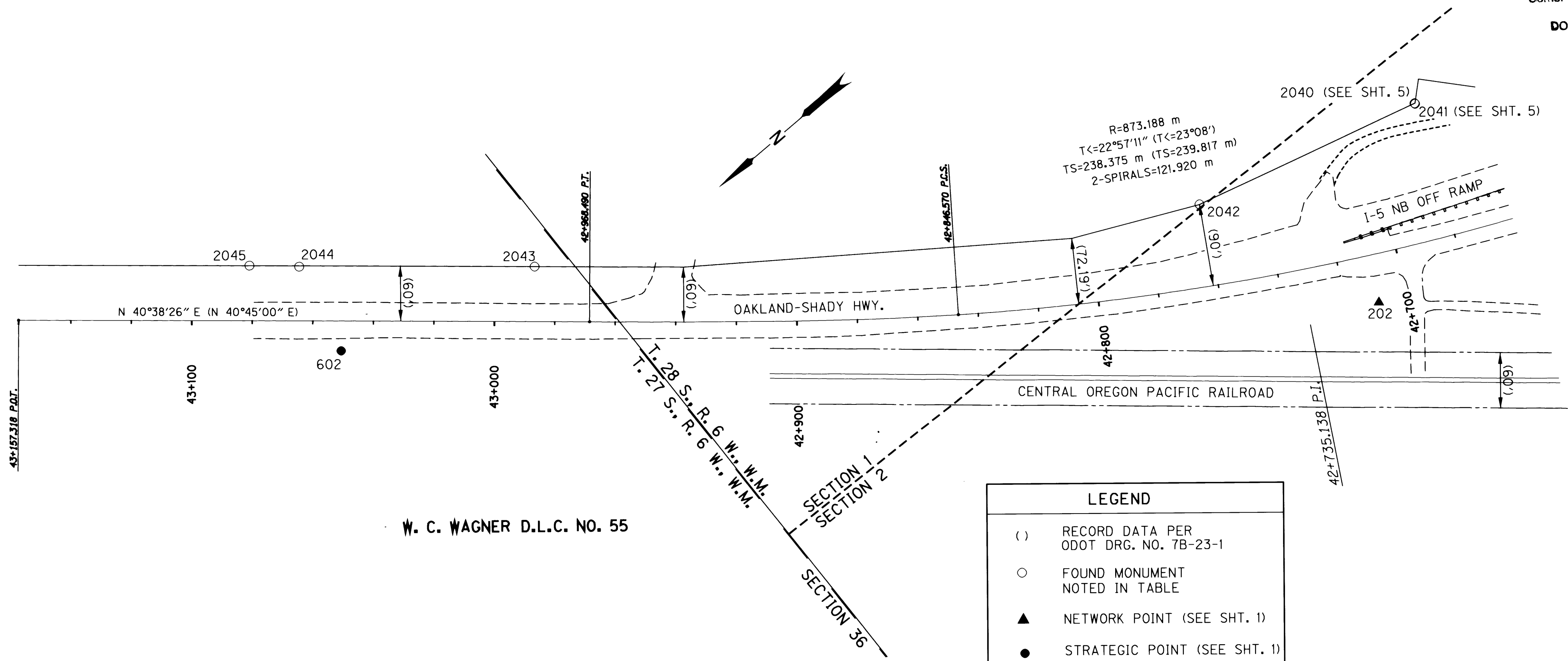


N.W. 1/4 SECTION 1 & N.E. 1/4 SECTION 2, T. 28 S., R. 6 W., W.M.
 S.W. 1/4 SECTION 36, T. 27 S., R. 6 W., W.M.

FILED
 Date: 4-24-2002 By:
 This survey consists of:
 Map: ST HWY 15- 014 A-H
 Narrative:
 Corner Rpt:

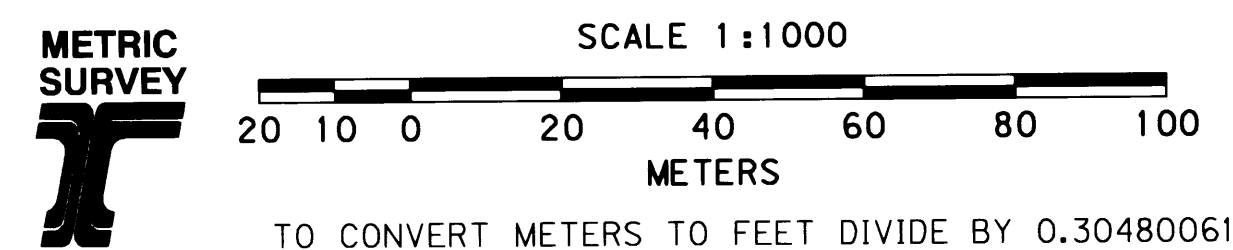
DOUGLAS COUNTY
 SURVEYOR



W. C. WAGNER D.L.C. NO. 55

LEGEND	
()	RECORD DATA PER ODOT DRG. NO. 7B-23-1
○	FOUND MONUMENT NOTED IN TABLE
▲	NETWORK POINT (SEE SHT. 1)
●	STRATEGIC POINT (SEE SHT. 1)
---	EDGE OF PAVEMENT
---	PROPERTY LINE
—X—	FENCE
----	GUARDRAIL
---	RAILROAD R/W LINE

REGISTERED
 PROFESSIONAL
 LAND SURVEYOR
Christine V. Blevins
 OREGON
 JULY 19, 1994
 CHRISTINE V. BLEVINS
 2669
 EXPIRES 12/31/03



RECOVERED MONUMENT LIST (SEE SHT. 1 & 2 FOR NETWORK & STRATEGIC PTS.)

PT. NO.	LDP NORTHING	LDP EASTING	STATION	OFFSET	DATE	DESCRIPTION & REFERENCE DOCUMENTS
2042	170930.343	376861.645	42+761.815	27.351	2-12-02	FND. 5/8" IRON ROD 250 mm BELOW SURFACE, GOOD CONDITION (REF. SURVEY *M106-26)
2043	171111.082	376988.417	42+986.759	18.289	2-12-02	FND. 5/8" IRON REBAR 65 mm ABOVE SURFACE, GOOD CONDITION (REF. SURVEY *M106-26)
2044	171170.321	377038.881	43+064.577	17.998	2-12-02	FND. 1" O.D. IRON PIPE 430 mm ABOVE SURFACE, POOR CONDITION, TIED WHERE PIPE ENTERS GROUND
2045	171182.612	377049.813	43+081.024	18.288	2-12-02	FND. 1/2" IRON ROD 200 mm ABOVE SURFACE, GOOD CONDITION, WITNESS POST NEARBY MARKED "SHRW"

OREGON DEPARTMENT OF TRANSPORTATION
 HORIZONTAL CONTROL, RECOVERY AND RETRACEMENT MAP
 SHADY BRIDGE
 PACIFIC HWY. (INTERSTATE 5)
 DOUGLAS COUNTY

APRIL 15, 2002 FOR ODOT REGION 3
 3500 NW STEWART PARKWAY, ROSEBURG, OR 97470
 SCALE: 1 mm = 1 m SHEET 8 OF 8