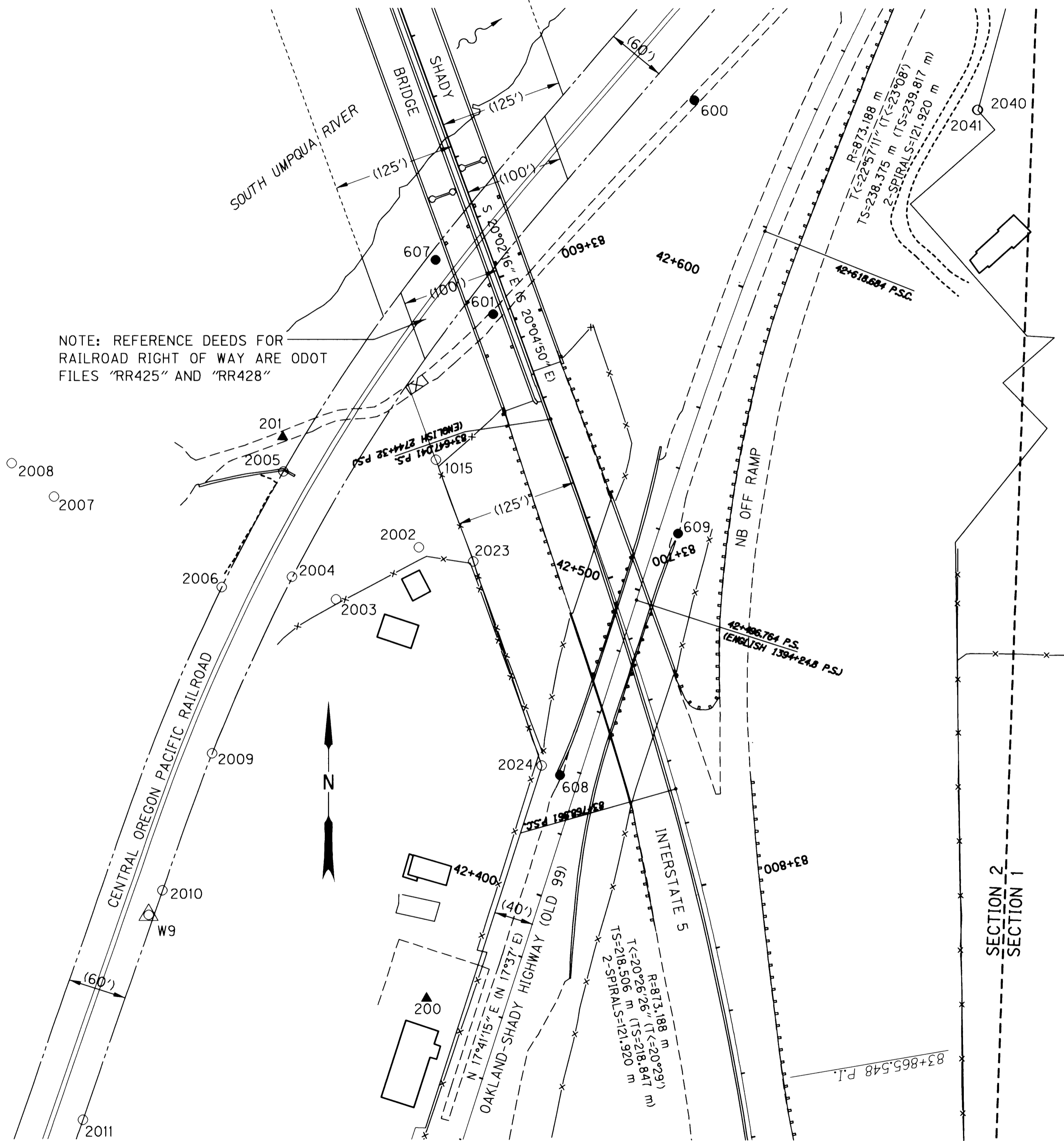


N.E. 1/4 SECTION 2, T. 28 S., R. 6 W., W.M.

FILED
 Date: 4-24-2002 By: DC
 This survey consists of:
 Map: ST HWY 15 - 014 A-H
 Narrative:
 Corner Rpt:
 DOUGLAS COUNTY
 SURVEYOR



NOTE: REFERENCE DEEDS FOR RAILROAD RIGHT OF WAY ARE ODOT FILES "RR425" AND "RR428"

NOTE: SEE SHEET 7 FOR RECOVERED MONUMENT LIST

LEGEND	
()	RECORD DATA PER ODOT DRG. NO. 8B-23-19 & ODOT DRG. NO. 7B-23-1
○	FOUND MONUMENT NOTED IN TABLE
▲	NETWORK POINT (SEE SHT. 1)
●	STRATEGIC POINT (SEE SHT. 1)
△	FOUND MONUMENT USED AS NETWORK POINT (SEE SHT. 1)
---	EDGE OF PAVEMENT
---	PROPERTY LINE
---	FENCE
---	GUARDRAIL
---	RAILROAD R/W LINE

REGISTERED PROFESSIONAL LAND SURVEYOR
 Christine V. Blevins
 OREGON
 JULY 19, 1994
 CHRISTINE V. BLEVINS
 2669
 EXPIRES 12/31/03



SCALE 1:1000
 20 10 0 20 40 60 80 100
 METERS
 TO CONVERT METERS TO FEET DIVIDE BY 0.30480061

OREGON DEPARTMENT OF TRANSPORTATION
 HORIZONTAL CONTROL, RECOVERY AND RETRACEMENT MAP
 SHADY BRIDGE
 PACIFIC HWY. (INTERSTATE 5)
 DOUGLAS COUNTY
 APRIL 15, 2002 FOR ODOT REGION 3
 3500 NW STEWART PARKWAY, ROSEBURG, OR 97470
 SCALE: 1 mm = 1 m SHEET 5 OF 8