

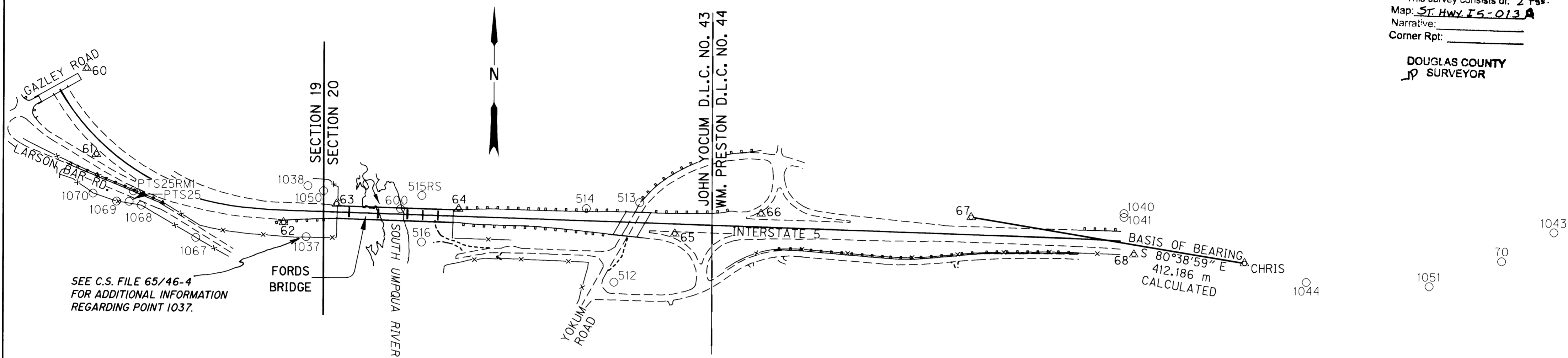
58

NE 1/4 & SE 1/4 SEC. 19, AND NE 1/4, NW 1/4,
SE 1/4, & SW 1/4 SEC. 20, T30S, R5W, W.M.

COUNTY SURVEYORS FILE DATA
DO NOT REMOVE FROM OFFICE

FILED
Date: 1/30/2002 By: JP
This survey consists of: 2 Pgs.
Map: ST HWY 15-013A
Narrative:
Corner Rpt:

DOUGLAS COUNTY
SURVEYOR



SEE C.S. FILE 65/46-4
FOR ADDITIONAL INFORMATION
REGARDING POINT 1037.

THE PURPOSE OF THIS SURVEY WAS TO ESTABLISH CONTROL FOR AN OREGON DEPARTMENT OF TRANSPORTATION PROJECT CALLED "FORDS BRIDGE REPLACEMENT" LOCATED ON INTERSTATE 5 NORTH OF CANYONVILLE. THE NETWORK AND MONUMENT TIES WERE SURVEYED FROM DECEMBER 17 TO DECEMBER 26, 2001. THE ORIGINAL FIELD NOTES ARE ARCHIVED IN SALEM AS BOOK # 3805.

THE BASIS OF BEARING WAS DEVELOPED FROM TWO FOUND STATE HIGHWAY MONUMENTS WHICH WERE PREVIOUSLY SET IN SURVEY # M129-39 AS HORIZONTAL CONTROL FOR THE "MYRTLE CREEK - CANYONVILLE" PROJECT. THE TWO POINTS HELD WERE 67 AND 'CHRIS'. AFTER HOLDING THESE TWO POINTS A NETWORK WAS RAN ON OTHER PREVIOUSLY SET ODOT CONTROL POINTS. THIS WAS DONE IN ORDER TO ESTABLISH MORE LOCAL CONTROL FOR THE FORDS BRIDGE PROJECT. LOCAL DATUM PLANE COORDINATES WERE USED AND ARE DERIVED FROM STATE PLANE COORDINATES (ENAD 1983 (1991)). TO CONVERT METRIC COORDINATES TO ENGLISH DIVIDE BY 0.3048.

A LEICA TCA 1800 TOTAL STATION THEODOLITE (SERIAL # 418939) WAS USED TO MAKE ALL OBSERVATIONS. THIS INSTRUMENT HAS THE FOLLOWING PRECISION: STANDARD ANGULAR ERROR OF +/- 1 SECOND, STANDARD DISTANCE ERROR OF +/- 2 mm, +/- 2 PPM.

THE LEAST SQUARES ADJUSTMENT PROGRAM WAS USED TO CALCULATE COORDINATES FOR ALL SET AND FOUND MONUMENTS, EXCEPT FOR POINTS 67 AND 'CHRIS' WHICH WERE HELD. THIS PROGRAM PRODUCES: ANGULAR RESIDUALS (THE AMOUNT THE FIELD ANGLE IS ADJUSTED), 100% WERE WITHIN 3 SECONDS, AND DISTANCE RESIDUALS (THE AMOUNT THE FIELD DISTANCE WAS ADJUSTED) 100% WERE WITHIN 2 mm. THESE RESIDUALS ARE WELL WITHIN ODOT STANDARDS FOR NETWORKS. THERE IS A 95% PROBABILITY THAT THE FINAL POSITIONS OF THE NETWORK POINTS ARE WITHIN THE ERROR ELLIPSES AS SHOWN ON THE "CONFIDENCE LEVEL LIMITS" TABLE SHOWN ON SHEET 2.

LEGEND

- FOUND MONUMENT NOTED IN TABLE (SHT. 2)
- △ FOUND MONUMENT USED AS NETWORK POINT
- EDGE OF PAVEMENT
- × FENCE
- ++++ GUARDRAIL

REGISTERED
PROFESSIONAL
LAND SURVEYOR

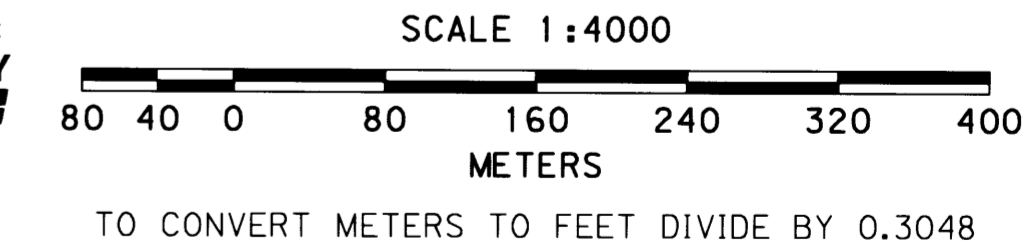
Christine V. Blevins

OREGON
JULY 19, 1994
CHRISTINE V. BLEVINS
2669

EXPIRES 12/31/03

NETWORK POINT COORDINATE TABLE

PT. NO.	LDP NORTHING	LDP EASTING	DATE	DESCRIPTION
58	146636.751	1269218.657	12-20-01	FND. 13 mm SQ. IRON ROD W/38 mm ALUM. CAP STAMPED "ODOT HORIZ. CONTROL 58", FLUSH WITH SURFACE, GOOD CONDITION (M129-39)
60	146447.613	1269323.099	12-20-01	FND. 13 mm SQ. IRON ROD W/38 mm ALUM. CAP STAMPED "ODOT HORIZ. CONTROL 60", FLUSH WITH SURFACE, GOOD CONDITION (M129-39)
61	146319.491	1269337.869	12-20-01	FND. 13 mm SQ. IRON ROD W/38 mm ALUM. CAP STAMPED "ODOT HORIZ. CONTROL 61", FLUSH WITH SURFACE, GOOD CONDITION (M129-39)
62	146217.963	1269616.314	12-20-01	FND. 13 mm SQ. IRON ROD W/38 mm ALUM. CAP STAMPED "ODOT HORIZ. CONTROL 62", FLUSH WITH SURFACE, GOOD CONDITION (M129-39)
63	146245.797	1269695.066	12-20-01	FND. 13 mm SQ. IRON ROD W/38 mm ALUM. CAP STAMPED "ODOT HORIZ. CONTROL 63", FLUSH WITH SURFACE, GOOD CONDITION (M129-39)
64	146238.858	1269876.499	12-20-01	FND. 13 mm SQ. IRON ROD W/38 mm ALUM. CAP STAMPED "ODOT HORIZ. CONTROL 64", FLUSH WITH SURFACE, GOOD CONDITION (M129-39)
65	146203.075	1270197.832	12-20-01	FND. 13 mm SQ. IRON ROD W/38 mm ALUM. CAP STAMPED "ODOT HORIZ. CONTROL 65", FLUSH WITH SURFACE, GOOD CONDITION (M129-39)
66	146233.241	1270325.872	12-20-01	FND. 13 mm SQ. IRON ROD W/38 mm ALUM. CAP STAMPED "ODOT HORIZ. CONTROL 66", FLUSH WITH SURFACE, GOOD CONDITION (M129-39)
67	146229.517	1270638.156	12-20-01	FND. 13 mm SQ. IRON ROD W/38 mm ALUM. CAP STAMPED "ODOT HORIZ. CONTROL 67", FLUSH WITH SURFACE, GOOD CONDITION (M129-39)
68	146174.995	1270880.263	12-20-01	FND. 13 mm SQ. IRON ROD W/38 mm ALUM. CAP STAMPED "ODOT HORIZ. CONTROL 68", FLUSH WITH SURFACE, GOOD CONDITION (M129-39)
CHRIS	146162.550	1271044.866	12-20-01	FND. 76 mm BRASS DISK SET IN CONCRETE STAMPED "OREGON D.O.T., DO NOT DISTURB, CHRIS 1997, GEODETIC CONTROL PT.", GOOD CONDITION, ORANGE WITNESS POST NEARBY (CS 65/19-1 & M129-39)



OREGON DEPARTMENT OF TRANSPORTATION
HORIZONTAL CONTROL AND RECOVERY MAP
FORDS BRIDGE
INTERSTATE 5 (PACIFIC HIGHWAY)
DOUGLAS COUNTY

JANUARY 28, 2002 FOR ODOT REGION 3
3500 N.W. STEWART PKWY., ROSEBURG, OREGON 97470
SCALE: 1:4000 SHEET 1 OF 2