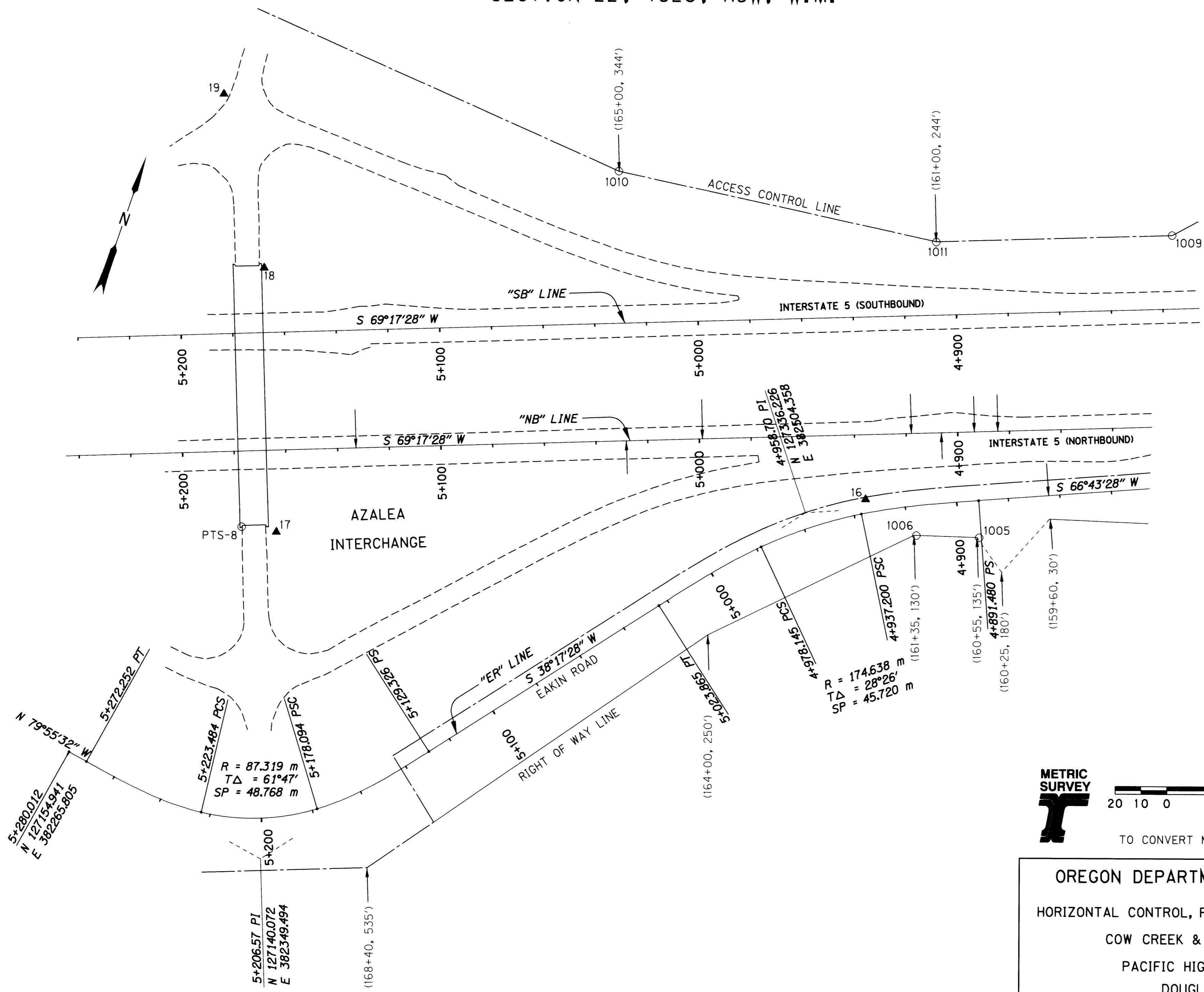


SECTION 22, T32S, R5W, W.M.

FILED  
 Date: 12/3/2001 By: JP  
 This survey consists of: 5 SHEETS  
 Map: ST. Hwy. I5-011C  
 Narrative: \_\_\_\_\_  
 Corner Rpt: \_\_\_\_\_

DOUGLAS COUNTY  
 SURVEYOR

LEGEND	
( )	RECORD DATA PER ODOT DRG. NO. 8B-30-20
○	FOUND MONUMENT NOTED IN TABLE, SHT. 2
▲	NETWORK POINT
---	EDGE OF PAVEMENT
---	ACCESS CONTROL LINE
---	PROPERTY LINE

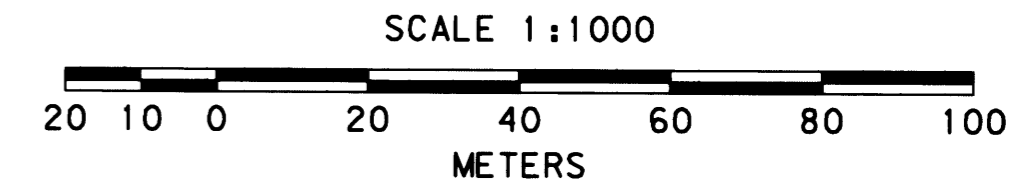


REGISTERED  
 PROFESSIONAL  
 LAND SURVEYOR

*Christine V. Blevins*

OREGON  
 JULY 19, 1994  
 CHRISTINE V. BLEVINS  
 02669LS

EXPIRES 12/31/01



TO CONVERT METERS TO FEET DIVIDE BY 0.30480061

OREGON DEPARTMENT OF TRANSPORTATION  
 HORIZONTAL CONTROL, RECOVERY AND RETRACEMENT MAP  
 COW CREEK & QUINES CREEK BRIDGES  
 PACIFIC HIGHWAY (INTERSTATE 5)  
 DOUGLAS COUNTY  
 NOVEMBER 27, 2001 FOR ODOT REGION 3  
 3500 NW STEWART PKWY., ROSEBURG, OR 97470  
 SCALE: 1 mm = 1 m SHEET 3 OF 5