

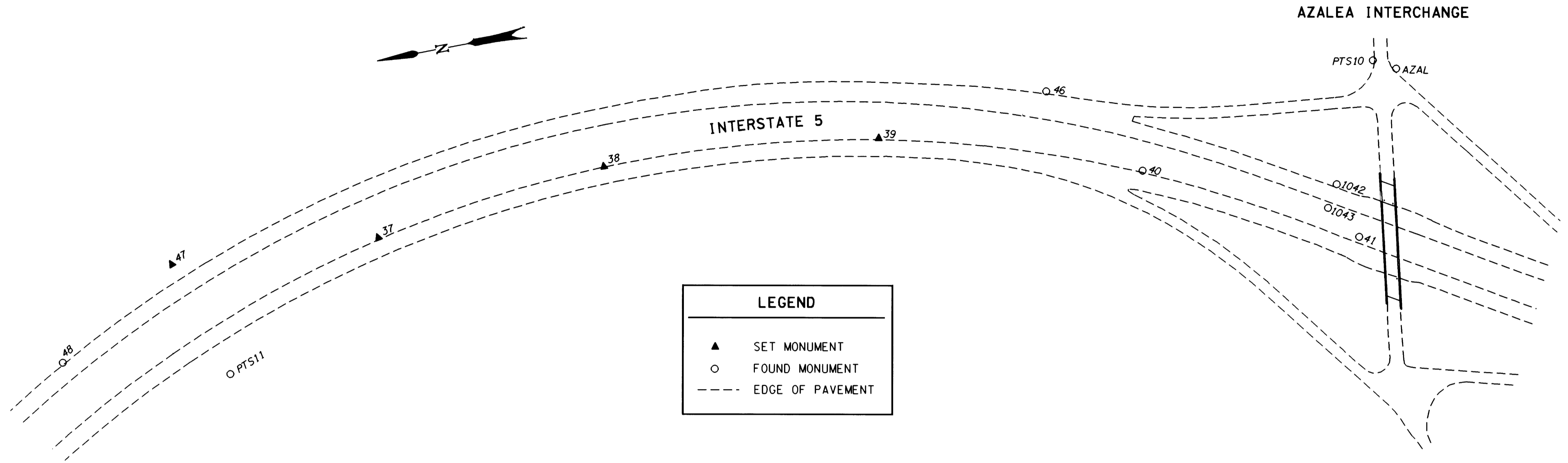
COUNTY SURVEYORS FILE DATA
DO NOT REMOVE FROM OFFICE

NE 1/4 & SE 1/4 SEC. 11, T. 32 S., R. 5 W., W.M.

FILED

Date: 10/30/2000 By: JP
This survey consists of: 16 Pgs.
Map: M135-71.0
Narrative:
Corner Rpt:

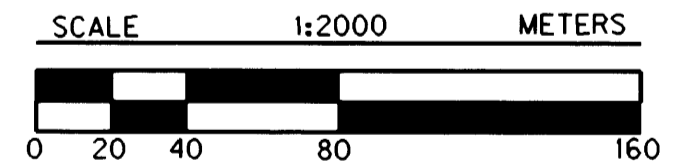
DOUGLAS COUNTY
SURVEYOR



LEGEND	
▲	SET MONUMENT
○	FOUND MONUMENT
---	EDGE OF PAVEMENT

POINT ID	LDP NORTHING	LDP EASTING	DESCRIPTION
37	130249.273	384577.175	SET 16 mm X 762 mm IRON REBAR W/A 38 mm BRASS CAP STAMPED "ODOT CONTROL 37" 70 mm BELOW SURFACE.
38	130078.427	384597.344	SET 16 mm X 762 mm IRON REBAR W/A 38 mm BRASS CAP STAMPED "ODOT CONTROL 38" FLUSH W/ SURFACE.
39	129878.382	384580.294	SET 16 mm X 762 mm IRON REBAR W/A 38 mm BRASS CAP STAMPED "ODOT CONTROL 39" FLUSH W/ SURFACE.
40	129694.636	384520.231	FOUND 2 3/4" BRASS DISK SET IN CONC. BLOCK STAMPED "STATE HIGHWAY DEPARTMENT REFERENCE 585+64.23 POST" 60 mm ABOVE SURFACE IN GOOD CONDITION. PADDLE BOARD NEARBY MARKED "SHRP P.O.S.T. 585+64.23" SB. (DRG. *8B-30-23)
41	129548.993	384443.311	FOUND 2 3/4" BRASS DISK SET IN CONC. STAMPED "STATE HIGHWAY DEPARTMENT REFERENCE EQ. 63+38.81 591+04.23 30.00" 60 mm BELOW SURFACE IN GOOD CONDITION. "SB" EQ. 591+04.23 PT BK.= 63+38.81 P.O.T. AH., 30.0 FT. LT.
46	129752.576	384590.289	FOUND 2 3/4" BRASS DISK SET IN CONC. STAMPED "STATE HIGHWAY DEPARTMENT REFERENCE LN 581+22.58 P.O.S.T." FLUSH W/ SURFACE IN GOOD CONDITION. PADDLE BOARD NEARBY MARKED "SHRP POST LN 581+22.58". (DRG. *8B-30-23)
47	130400.333	384586.462	SET 16 mm X 762 mm IRON REBAR W/A 38 mm BRASS CAP STAMPED "ODOT CONTROL 47" FLUSH W/ SURFACE.
48	130491.583	384530.281	FOUND 5/8" IRON ROD W/A 1 1/2" ALUM. CAP STAMPED "OREG. STATE HWY. DIV." 100 mm BELOW SURFACE IN GOOD CONDITION. PADDLE BOARD NEARBY MARKED "SHRP LN 556+54.74".
1042	129557.864	384483.942	FOUND 2 3/4" BRASS DISK STAMPED "STATE HIGHWAY DEPARTMENT REFERENCE 30.00 P.T. 62+44.53 588+50.03" 150 mm BELOW SURFACE IN GOOD CONDITION. PADDLE BOARD NEARBY MARKED "SHRP EQ. PT 62+44.53 AH 588+50.03 BK 30" LEFT OF NB. (DRG. *8B-30-23)
1043	129567.280	384468.275	FOUND 2 3/4" BRASS DISK STAMPED "STATE HIGHWAY DEPARTMENT REFERENCE 30.00 P.T. 62+44.53 588+50.03" RIGHT OF NB. (DRG. *8B-30-23)
PTS10	129515.015	384567.802	FOUND 2 7/8" BRASS DISK STAMPED "DOUGLAS CO. SURVEYORS OFFICE 1973 PTS-10" SET IN CONC. SIGN BASE FLUSH W/ CONC. IN GOOD CONDITION.
PTS11	130373.373	384499.067	FOUND 2 7/8" BRASS DISK STAMPED "DOUGLAS CO. SURVEYORS OFFICE 1975 PTS 11" SET IN CONC. MOUND FLUSH W/ CONCRETE, 150 mm ABOVE THE GROUND IN GOOD CONDITION. WITNESS POST NEARBY.
AZAL	129499.518	384558.675	FOUND 4" BRASS DISK SET IN CONC. STAMPED "FOR INFORMATION CONTACT OREGON DEPT. OF TRANS. OR COUNTY SURVEY NGS OREGON PRIMARY GPS STATION 1989 AZAL" FLUSH W/ SURFACE IN GOOD CONDITION. ORANGE CARSONITE POST NEARBY.

REGISTERED
PROFESSIONAL
LAND SURVEYOR
Christine V. Blavin
OREGON
JULY 19, 1994
CHRISTINE V. BLAVIN
2000
EXPIRES: DEC. 31, 2001



1 METER = 3937 U.S. FEET / 1200
TO CONVERT A METRIC DISTANCE DIVIDE BY 0.30480061

OREGON DEPARTMENT OF TRANSPORTATION
HORIZONTAL CONTROL
AND RECOVERY MAP
CANYONVILLE - AZALEA SECTION
INTERSTATE 5
DOUGLAS COUNTY
3500 STEWART PARKWAY, SUITE 140
ROSEBURG, OREGON 97470

OCTOBER 26, 2000
PROJECT KEY *10832

SHEET 15 OF 16

ST. HWY. 15-0100

MAP FILE M135-71.0

MAP FILE M135-71.0