

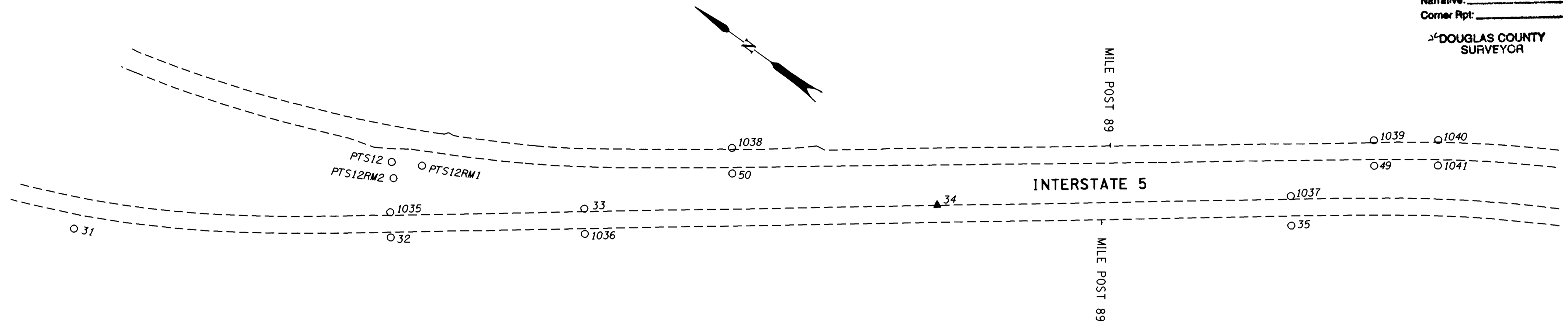
COUNTY SURVEYORS FILE DATA  
DO NOT REMOVE FROM OFFICE

SW 1/4 & SE 1/4 SEC. 2, AND NE 1/4 SEC. 11, T. 32 S., R. 5 W., W.M.

FILED

Date: 10/30/2000 By: JP  
This survey consists of: 16 Pgs.  
Map: M135-71N  
Narrative: \_\_\_\_\_  
Corner Rpt: \_\_\_\_\_

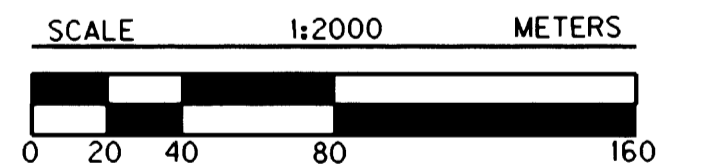
DOUGLAS COUNTY  
SURVEYOR



POINT ID	LDP NORTHING	LDP EASTING	DESCRIPTION
31	131328.402	383851.142	FOUND 2 3/4" BRASS DISK SET IN CONC. PEDESTAL STAMPED "STATE HIGHWAY DEPARTMENT REFERENCE P.O.S.T. 524+43.58" 150 mm ABOVE SURFACE IN GOOD CONDITION. PADDLE BOARD NEARBY MARKED "SHRP P.O.S.T. 524+43.58" SOUTH BOUND. (DRG. *8B-30-23)
32	131140.787	383979.634	FOUND 2 3/4" BRASS DISK SET IN CONC. STAMPED "STATE HIGHWAY DEPARTMENT REFERENCE 531+89.00 P.T. 35.00" 200 mm BELOW SURFACE IN GOOD CONDITION. PADDLE BOARD NEARBY MARKED "SHRW LS P.T. 531+89.00 35" RIGHT. (DRG. *8B-30-23)
33	131040.805	384078.266	FOUND 2 3/4" BRASS DISK SET IN CONC. STAMPED "STATE HIGHWAY DEPARTMENT REFERENCE EQ. 536+46.00 = 536+35.00 25.00" 100 mm BELOW SURFACE IN GOOD CONDITION. PADDLE BOARD NEARBY MARKED "SHRP EQ. P.O.T. 536+35.00 BK. 536+46.00 AH. 25" LEFT. (DRG. *8B-30-23)
34	130838.399	384230.179	SET 16 mm X 762 mm IRON REBAR W/A 38 mm BRASS CAP STAMPED "ODOT CONTROL 34" 80 mm BELOW SURFACE.
35	130623.779	384367.142	FOUND 2 3/4" BRASS DISK SET IN CONC. STAMPED "STATE HIGHWAY DEPARTMENT REFERENCE 552+97.56 P.S. 45.00" FLUSH W/ SURFACE IN GOOD CONDITION. PADDLE BOARD NEARBY MARKED "SHRP PS 552+97.56 45.00" RIGHT. (DRG. *8B-30-23)
36	130502.719	384476.030	FOUND 2 3/4" BRASS DISK SET IN CONC. STAMPED "STATE HIGHWAY DEPARTMENT REFERENCE 558+30.16 P.O.S.T." 240 mm BELOW SURFACE IN GOOD CONDITION. PADDLE BOARD NEARBY MARKED "SHRP 558+30.16 P.O.S.T." (DRG. *8B-30-23)
49	130601.042	384437.014	FOUND 2 3/4" BRASS DISK SET IN CONC. STAMPED "STATE HIGHWAY DEPARTMENT REFERENCE 551+83.64 P.S. 30.00" 160 mm BELOW SURFACE IN GOOD CONDITION. PADDLE BOARD NEARBY MARKED "SHRP" 551+83.64 P.S. RIGHT OF N.B. (DRG. *8B-30-23)
50	130970.115	384161.158	FOUND 5/8" IRON ROD W/A 1 1/2" ALUM. CAP STAMPED "OREG. STATE HWY. DIV." 50 mm BELOW SURFACE IN GOOD CONDITION. STATION SB 536+71.65 PT 30.0 FT. RT. STINGER NEARBY. (DRG. *8B-30-23)
1035	131151.835	383994.206	FOUND 2 3/4" BRASS DISK SET IN CONC. STAMPED "STATE HIGHWAY DEPARTMENT REFERENCE 531+89.00 P.T. 25.00" 300 mm BELOW SURFACE IN GOOD CONDITION. PADDLE BOARD NEARBY MARKED "SHRP P.T. 531+89.00 25" LEFT SB. (DRG. *8B-30-23)
1036	131029.758	384063.677	FOUND 2 3/4" BRASS DISK STAMPED "STATE HIGHWAY DEPARTMENT REFERENCE 35.00 EQ. 536+35.00 536+46.00" SET IN CONC. SB RIGHT. STINGER NEARBY. (DRG. *8B-30-23)
1037	130636.667	384384.166	FOUND 2 3/4" BRASS DISK STAMPED "STATE HIGHWAY DEPARTMENT REFERENCE 552+97.56 P.S. 25.00" SET IN CONC. 230 mm BELOW SURFACE IN GOOD CONDITION. PADDLE BOARD NEARBY MARKED "SHRP P.S. 552+97.56 25" LEFT OF SB. (DRG. *8B-30-23)
1038	130981.053	384175.824	FOUND 5/8" IRON ROD W/A 1 1/2" ALUM. CAP STAMPED "OREG. STATE HWY. DIV." 50 mm BELOW SURFACE IN GOOD CONDITION. NB 536+71.65 P.T., 30.0 FT. LT. (DRG. *8B-30-23)
1039	130611.996	384451.662	FOUND 5/8" IRON ROD W/A 1 1/2" ALUM. CAP STAMPED "OREG. STATE HWY. DIV." 150 mm BELOW SURFACE IN GOOD CONDITION. PADDLE BOARD NEARBY MARKED "SHRP P.S. 551+83.64 30" LEFT OF NB.
1040	130574.759	384478.984	FOUND 5/8" IRON ROD W/A 1 1/2" ALUM. CAP STAMPED "OREG. STATE HWY. DIV." SET IN CONC. 140 mm BELOW SURFACE IN GOOD CONDITION. PADDLE BOARD NEARBY MARKED "SHRW" NB 553+33.64 P.S.C., LEFT. (DRG. *8B-30-23)
1041	130564.204	384464.047	FOUND 2 7/8" BRASS DISK STAMPED "OREGON STATE HIGHWAY DIV. REFERENCE DO NOT DISTURB" SET IN CONC. 100 mm BELOW SURFACE IN GOOD CONDITION. STINGER NEARBY. NB 553+33.64 P.S.C. RIGHT.
PTS12	131172.251	384024.064	FOUND 2 7/8" BRASS DISK SET IN CONC. STAMPED "DOUGLAS CO. SURVEYORS OFFICE 1975 PTS 12" FLUSH W/ SURFACE. DISK HAS BEEN SCRAPED BUT OTHERWISE GOOD CONDITION.
PTS12RMI	131153.153	384034.658	FOUND 2 7/8" BRASS DISK STAMPED "DOUGLAS CO. SURVEYORS OFFICE PTS-12 RMI 1985" SET IN CONC. FLUSH W/ SURFACE IN GOOD CONDITION.
PTS12RM2	131164.451	384015.436	FOUND 2 7/8" BRASS DISK STAMPED "DOUGLAS CO. SURVEYORS OFFICE PTS-12 RM2 1985" SET IN CONC. RING AROUND MANHOLE FLUSH W/ SURFACE IN GOOD CONDITION.

LEGEND	
▲	SET MONUMENT
○	FOUND MONUMENT
---	EDGE OF PAVEMENT

REGISTERED  
PROFESSIONAL  
LAND SURVEYOR  
  
Christine V. Blavin  
  
OREGON  
JULY 19, 1994  
CHRISTINE V. BLAVIN  
2000  
EXPIRES: DEC. 31, 2001



1 METER = 3937 U.S. FEET / 1200  
TO CONVERT A METRIC DISTANCE DIVIDE BY 0.30480061

OREGON DEPARTMENT OF TRANSPORTATION  
HORIZONTAL CONTROL  
AND RECOVERY MAP  
CANYONVILLE - AZALEA SECTION  
INTERSTATE 5  
DOUGLAS COUNTY  
3500 STEWART PARKWAY, SUITE 140  
ROSEBURG, OREGON 97470

OCTOBER 26, 2000  
PROJECT KEY \*10832

SHEET 14 OF 16

ST. HWY. 15-010N

MAP FILE M135-71N

MAP FILE M135-71N