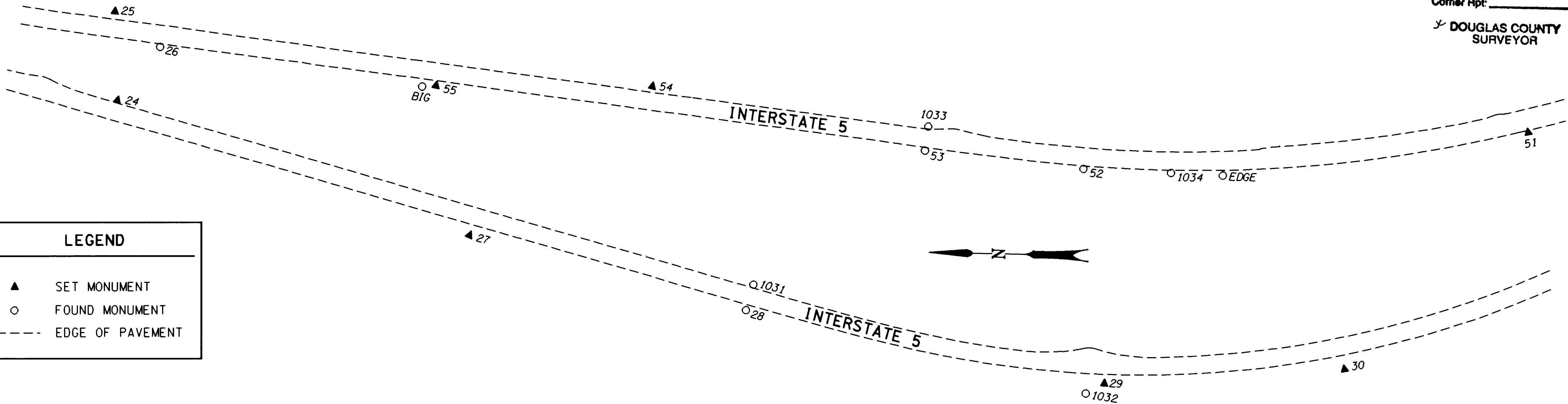


COUNTY SURVEYORS FILE DATA
DO NOT REMOVE FROM OFFICE

NW 1/4 & SW 1/4 SEC. 2, T. 32 S., R. 5 W., W.M.

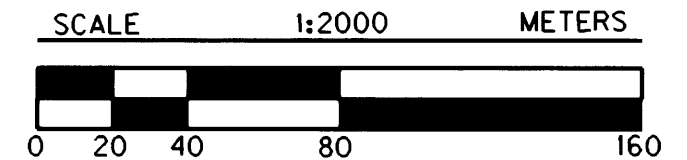
FILED
Date: 10/30/2000 By: JP
This survey consists of: 16 Pgs.
Map: M135-71.M
Narrative:
Corner Rpt:
DOUGLAS COUNTY SURVEYOR



LEGEND	
▲	SET MONUMENT
○	FOUND MONUMENT
- - -	EDGE OF PAVEMENT

POINT ID	LDP NORTHING	LDP EASTING	DESCRIPTION
24	132325.367	383971.469	SET 16 mm X 762 mm IRON REBAR W/A 38 mm BRASS CAP STAMPED "ODOT CONTROL 24" FLUSH W/ SURFACE.
25	132328.180	384032.899	SET 16 mm X 762 mm IRON REBAR W/A 38 mm BRASS CAP STAMPED "ODOT CONTROL 25" 30 mm BELOW SURFACE.
26	132296.746	384008.098	FOUND 2 3/4" BRASS DISK SET IN CONC. STAMPED "STATE HIGHWAY DEPARTMENT REFERENCE 491+53.52 P.T. 25.00" 50 mm BELOW SURFACE IN GOOD CONDITION. PADDLE BOARD NEARBY MARKED "SHRP 491+53.52 PT 25" RIGHT. (DRG. *8B-30-23)
27	132081.056	383883.013	SET 16 mm X 762 mm IRON REBAR W/A 38 mm BRASS CAP STAMPED "ODOT CONTROL 27" FLUSH WITH SURFACE.
28	131889.920	383834.349	FOUND 2 3/4" BRASS DISK SET IN CONC. STAMPED "STATE HIGHWAY DEPARTMENT REFERENCE 505+97.00 PS 35.00" FLUSH W/ SURFACE IN GOOD CONDITION. PADDLE BOARD NEARBY MARKED "SHRW PS LS 505+97.00 35.00" RIGHT. (DRG. *8B-30-23)
29	131642.019	383789.740	SET 16 mm X 762 mm IRON REBAR W/A 38 mm BRASS CAP STAMPED "ODOT CONTROL 29" FLUSH W/ SURFACE.
30	131476.798	383802.927	SET 16 mm X 762 mm IRON REBAR W/A 38 mm BRASS CAP STAMPED "ODOT CONTROL 30" FLUSH W/ SURFACE.
51	131353.401	383968.532	SET 16 mm X 762 mm IRON REBAR W/A 38 mm BRASS CAP STAMPED "ODOT CONTROL 51" FLUSH W/ SURFACE.
52	131659.400	383936.630	FOUND 5/8" IRON ROD W/A 1 1/2" ALUM. CAP STAMPED "OREG. STATE HWY. DIV." SET IN CONC. 100 mm BELOW SURFACE IN GOOD CONDITION. PADDLE BOARD NEARBY MARKED "SHRW NB 512+57.76 P.S.C. REFERENCE RIGHT. (DRG. *8B-30-23)
53	131768.789	383946.985	FOUND 2 3/4" BRASS DISK SET IN CONC. STAMPED "STATE HIGHWAY DEPARTMENT REFERENCE 508+97.76 PS 25.00" FLUSH W/ SURFACE IN GOOD CONDITION. PADDLE BOARD NEARBY MARKED "SHRP PS 508+97.76 25" RIGHT. (DRG. *8B-30-23)
54	131957.125	383988.273	SET 16 mm X 762 mm IRON REBAR W/A 38 mm BRASS CAP STAMPED "ODOT CONTROL 54" FLUSH W/ SURFACE.
55	132106.171	383985.788	SET 16 mm X 762 mm IRON REBAR W/A 38 mm BRASS CAP STAMPED "ODOT CONTROL 55" FLUSH W/ SURFACE.
1031	131885.146	383852.043	FOUND 2 3/4" BRASS DISK STAMPED "STATE HIGHWAY DEPARTMENT REFERENCE 505+97.00 P.S. 25.00" SET IN CONC. 170 mm BELOW SURFACE IN GOOD CONDITION. PADDLE BOARD NEARBY MARKED "SHRP P.S. 505+97.00 25" LEFT. (DRG. *8B-30-23)
1032	131654.733	383781.771	FOUND 2 3/4" BRASS DISK STAMPED "STATE HIGHWAY DEPARTMENT REFERENCE POST 513+85.14" SET IN CONC. 60 mm ABOVE SURFACE IN GOOD CONDITION. PADDLE BOARD NEARBY MARKED "POST 513+85.14 SHRP" SB. (DRG. *8B-30-23)
1033	131766.856	383963.645	FOUND 2 3/4" BRASS DISK STAMPED "STATE HIGHWAY DEPARTMENT REFERENCE 508+97.76 P.S. 30.00" SET IN CONC. 220 mm BELOW SURFACE IN GOOD CONDITION. PADDLE BOARD NEARBY MARKED "SHRP 508+97.76 P.S. 30" LEFT. (DRG. *8B-30-23)
1034	131598.935	383935.090	FOUND 2 3/4" BRASS DISK STAMPED "STATE HIGHWAY DEPARTMENT REFERENCE LN 514+56.02 P.O.S.T." SET IN CONC. 70 mm BELOW SURFACE IN GOOD CONDITION. PADDLE BOARD NEARBY MARKED "SHRP P.O.S.T. LN 514+56.02". (DRG. *8B-30-23)
BIG	132115.833	383984.137	FOUND 3 1/4" BRASS DISK ON A 2 1/4" IRON PIPE STAMPED "OREGON STATE HIGHWAY DEPT. DO NOT DISTURB ELEV. 1962 STATION BIG USC & GS" 180 mm ABOVE SURFACE IN GOOD CONDITION. MARKER NEARBY.
EDGE	131563.208	383933.978	FOUND 3 1/4" BRASS DISK ON A 2 1/4" IRON PIPE STAMPED "OREGON STATE HIGHWAY DEPT. DO NOT DISTURB ELEV. 1962 USC & GS STATION EDGE" 220 mm ABOVE SURFACE IN GOOD CONDITION. MARKER NEARBY.

REGISTERED PROFESSIONAL LAND SURVEYOR
Christine V. Blavin
OREGON JULY 19, 1994
CHRISTINE V. BLAVIN
2000
EXPIRES: DEC. 31, 2001



1 METER = 3937 U.S. FEET / 1200
TO CONVERT A METRIC DISTANCE DIVIDE BY 0.30480061

OREGON DEPARTMENT OF TRANSPORTATION
HORIZONTAL CONTROL AND RECOVERY MAP
CANYONVILLE - AZALEA SECTION
INTERSTATE 5
DOUGLAS COUNTY
3500 STEWART PARKWAY, SUITE 140
ROSEBURG, OREGON 97470
OCTOBER 26, 2000
PROJECT KEY *10832
SHEET 13 OF 16

ST. HWY. 15-010M

MAP FILE M135-71.M

MAP FILE M135-71.M