

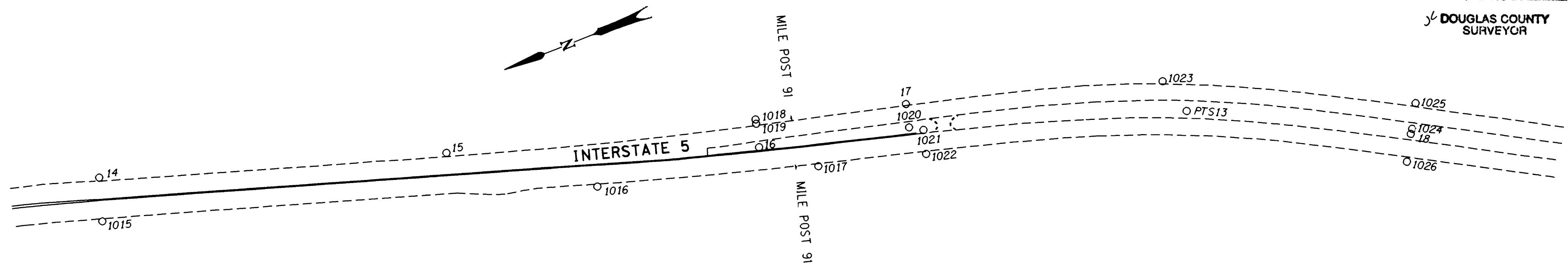
COUNTY SURVEYORS FILE DATA
DO NOT REMOVE FROM OFFICE

SE 1/4 SEC. 26 & NE 1/4 SEC. 35, T. 31 S., R. 5 W., W.M.

FILED

Date: 10/30/2000 By: SP
This survey consists of: 16 Pgs.
Map: M135-71.K
Narrative: _____
Corner Rpt: _____

DOUGLAS COUNTY
SURVEYOR



| POINT ID | LDP NORTHING | LDP EASTING | DESCRIPTION |
|----------|--------------|-------------|--|
| 14 | 134280.217 | 384762.765 | FOUND 2 7/8" BRASS DISK SET IN CONC. STAMPED "STATE HIGHWAY DEPARTMENT BM NO. ELEVATION FEET" 150 mm BELOW SURFACE IN GOOD CONDITION. STA. EQ. SB 418+97.27 P.T., NB 418+97.27 P.O.T., 42.0 FT. RT. (30 FT. LT. OF NB) (DRG. *8B-31-12) |
| 15 | 134047.261 | 384688.084 | FOUND 5/8" IRON ROD W/A 1 1/2" ALUM. CAP STAMPED "OREG. STATE HWY. DIV." 100 mm BELOW SURFACE SET IN CONC. IN GOOD CONDITION. STATION NB 427+00.39 P.C., 25.0 FT. LT. (DRG. *8B-31-12) |
| 16 | 133841.907 | 384610.318 | FOUND 2 7/8" BRASS DISK SET IN CONC. STAMPED "STATE HIGHWAY DEPARTMENT B.M. NO. ELEVATION FEET" 100 mm BELOW SURFACE IN GOOD CONDITION. STATION EQ. NB 434+18.72 P.T. BK., NB 436+66.60 P.O.T. AH. (25.0 FT. RT.) |
| 17 | 133734.739 | 384600.359 | FOUND 5/8" IRON ROD W/A 1 1/2" ALUM. CAP STAMPED " OREG. STATE HWY. DEPT." 100 mm BELOW SURFACE IN GOOD CONDITION STA. NB 440+15.27 PS, 25.0 FT. LT. (DRG. *8B-31-12) |
| 18 | 133412.850 | 384449.071 | FOUND 2 3/4" BRASS DISK SET IN CONC. STAMPED "STATE HIGHWAY DEPARTMENT REFERENCE 30.00 PT" 200 mm BELOW SURFACE IN GOOD CONDITION. PADDLE BOARD NEARBY MARKED "SHRP SB 451+73.79, 30.0 LT.". (DRG. *8B-13-12) |
| 1015 | 134289.697 | 384733.154 | FOUND 5/8" IRON ROD W/A 1 1/2" ALUM. CAP STAMPED "OREG. STATE HWY. DEPT." 220 mm BELOW SURFACE SET IN CONC. IN GOOD CONDITION. PADDLE BOARD NEARBY MARKED "SHRW PT LS 418+97.27 POT LN 418+97.27 42.0 LT EQ.". (30.0 FT. RT. OF LS) (DRG. *8B-31-12) |
| 1016 | 133957.583 | 384626.740 | FOUND 5/8" IRON ROD W/A 1 1/2" ALUM. CAP STAMPED "OREG. STATE HWY. DEPT." 200 mm BELOW SURFACE SET IN CONC. IN GOOD CONDITION. PADDLE BOARD NEARBY MARKED "SHRP P.C. LS 430+41.71" 30.0 FT. RT. (DRG. *8B-31-12) |
| 1017 | 133808.131 | 384582.445 | FOUND 5/8" IRON ROD W/A 1 1/2" ALUM. CAP STAMPED "OREG. STATE HWY. DEPT." 200 mm BELOW SURFACE SET IN CONC. IN GOOD CONDITION. SB 435+51.71 P.T. BK., 438+01.18 P.O.T. AH., 30.0 FT. RT. (DRG. *8B-31-12) |
| 1018 | 133836.920 | 384629.474 | FOUND 5/8" IRON ROD 100 mm BELOW SURFACE IN GOOD CONDITION. STATION NB EQ. 434+18.72 P.T. BK.= 436+66.60 P.O.T. AH., 35.0 FT. LT. (DRG. *8B-31-12) |
| 1019 | 133837.653 | 384626.465 | FOUND 5/8" IRON ROD W/A 1 1/2" ALUM. CAP STAMPED "OREG. STATE HWY. DEPT." 220 mm BELOW SURFACE SET IN CONC. IN GOOD CONDITION. STATION NB EQ. 434+18.72 PT BK. = 436+66.60 POT AH, 25.0 FT. LT. (DRG. *8B-31-12) |
| 1020 | 133738.779 | 384584.279 | FOUND 5/8" IRON ROD W/A 1 1/2" ALUM. CAP STAMPED "OREG. STATE HWY. DIV." 250 mm BELOW SURFACE SET IN CONC. IN GOOD CONDITION. STATION NB 440+15.27 PS, 30.0 FT. RT. (DRG. *8B-31-12) |
| 1021 | 133730.104 | 384578.838 | FOUND 5/8" IRON ROD 300 mm BELOW SURFACE IN GOOD CONDITION. STATION SB 440+51.71 PS, 26.0 FT. LT. (DRG. *8B-31-12) |
| 1022 | 133734.591 | 384562.366 | FOUND 5/8" IRON ROD W/A 1 1/2" ALUM. CAP STAMPED "OREG. STATE HWY. DIV." SET IN CONC. 180 mm BELOW SURFACE. IN GOOD CONDITION. PADDLE BOARD NEARBY MARKED "SHRP P.S. LS 440+51.71" 30.0 FT. RT. (DRG. *8B-31-12) |
| 1023 | 133561.154 | 384548.359 | FOUND 5/8" IRON ROD W/A 1 1/2" ALUM. CAP STAMPED "OREG. STATE HWY. DEPT." 220 mm BELOW SURFACE IN GOOD CONDITION. STATION NB 446+05.01 P.I. (DRG. *8B-30-23) |
| 1024 | 133410.663 | 384452.042 | FOUND 5/8" IRON ROD W/A 1 1/2" ALUM. CAP STAMPED "OREG. STATE HWY. DEPT." SET IN CONC. 100 mm BELOW SURFACE IN GOOD CONDITION. STATION NB 451+89.44 PT, 30.00 FT. RT. (DRG. *8B-30-23) |
| 1025 | 133401.694 | 384467.965 | FOUND 5/8" IRON ROD W/A 1 1/2" ALUM. CAP STAMPED "OREG. STATE HWY. DIV." SET IN CONC. 130 mm BELOW SURFACE IN GOOD CONDITION. PADDLE BOARD NEARBY MARKED "SHRW P.T. LN 451+89.44 30.0 LT.". (DRG. *8B-30-23). |
| 1026 | 133422.657 | 384431.843 | FOUND 2 3/4" BRASS DISK STAMPED "STATE HIGHWAY DEPARTMENT REFERENCE P.T. 451+73.79 35.00" SET IN CONC. 160 mm BELOW SURFACE IN GOOD CONDITION. PADDLE BOARD NEARBY MARKED "SHRP P.T. 451+73.79, 35.0" RT. (DRG. *8B-30-23) |
| PTS13 | 133553.210 | 384522.660 | FOUND 2 7/8" BRASS DISK SET FLUSH IN THE N.E. CORNER OF CONC. DRAIN BASIN STAMPED "DOUGLAS CO. SURVEYORS OFFICE 1975 PTS-13" IN GOOD CONDITION. |

LEGEND

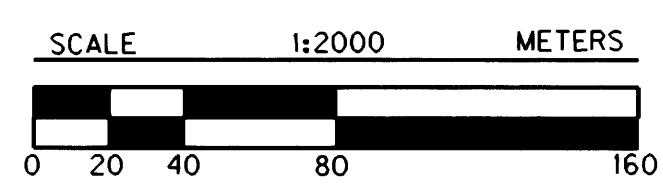
- ▲ SET MONUMENT
- FOUND MONUMENT
- CONCRETE BARRIER
- - - EDGE OF PAVEMENT

REGISTERED
PROFESSIONAL
LAND SURVEYOR

Christine V. Blavin

OREGON
JULY 18, 1994
CHRISTINE V. BLAVIN
2000

EXPIRES: DEC. 31, 2001



1 METER = 3937 U.S. FEET / 1200
TO CONVERT A METRIC DISTANCE DIVIDE BY 0.30480061

OREGON DEPARTMENT OF TRANSPORTATION

HORIZONTAL CONTROL
AND RECOVERY MAP

CANYONVILLE - AZALEA SECTION
INTERSTATE 5
DOUGLAS COUNTY

3500 STEWART PARKWAY, SUITE 140
ROSEBURG, OREGON 97470

OCTOBER 26, 2000
PROJECT KEY #10832

SHEET 11 OF 16

ST. HWY. 15-01OK

MAP FILE M135-71.K

MAP FILE M135-71.K