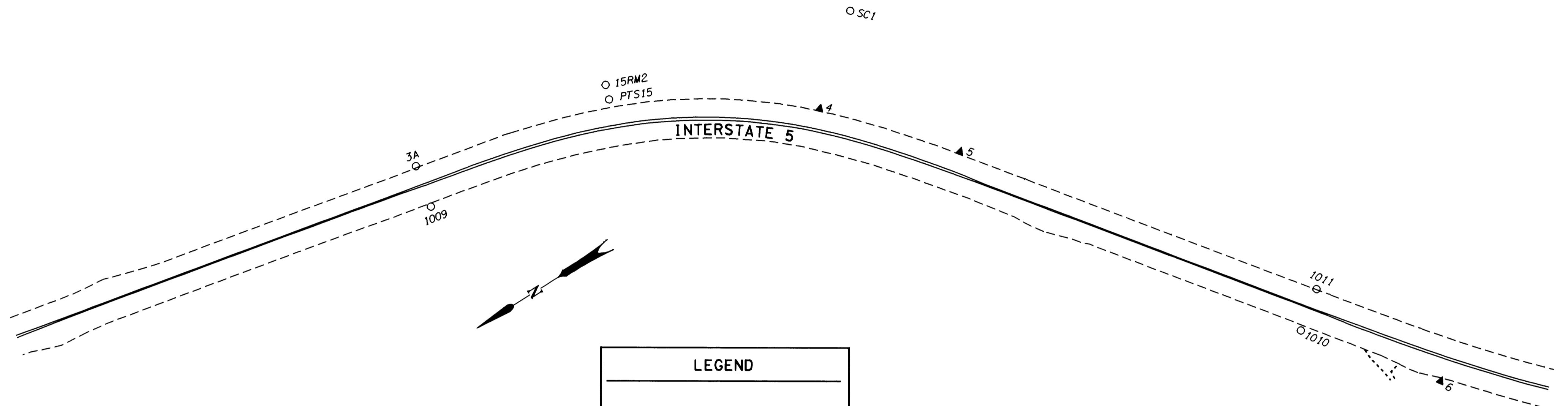


COUNTY SURVEYORS FILE DATA
DO NOT REMOVE FROM OFFICE

SW 1/4 SEC. 24, SE 1/4 SEC. 23, & NE 1/4 SEC. 26,
T. 31 S., R. 5 W., W.M.

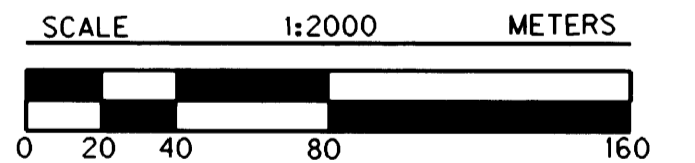
FILED
Date: 10/30/2000 By: SP
This survey consists of: 16 P&S.
Map: M135-71 I
Narrative: _____
Corner Rpt: _____
DOUGLAS COUNTY
SURVEYOR



LEGEND	
▲	SET MONUMENT
○	FOUND MONUMENT
---	EDGE OF PAVEMENT
==	METAL MEDIAN BARRIER

REGISTERED
PROFESSIONAL
LAND SURVEYOR
Christine V. Blavin
OREGON
JULY 19, 1994
CHRISTINE V. BLAVIN
2000
EXPIRES: DEC. 31, 2001

POINT ID	LDP NORTHING	LDP EASTING	DESCRIPTION
3A	135947.937	385242.063	FOUND 2 1/8" BRASS DISK SET IN CONCRETE STAMPED "STATE HIGHWAY DEPARTMENT BM NO. ELEVATION FEET" 100 mm BELOW SURFACE IN GOOD CONDITION. STATION LS 353+60.12 P.S., 67.0 FT. LT. (DRG. *8B-31-12)
4	135688.025	385126.892	SET 16 mm X 762 mm IRON REBAR W/A 38 mm BRASS CAP STAMPED "ODOT CONTROL 4" FLUSH W/ SURFACE.
5	135621.217	385049.644	SET 16 mm X 762 mm IRON REBAR W/A 38 mm BRASS CAP STAMPED "ODOT CONTROL 5" FLUSH W/ SURFACE.
6	135422.960	384735.629	SET 16 mm X 762 mm IRON REBAR W/A 38 mm BRASS CAP STAMPED "ODOT CONTROL 6" FLUSH W/ SURFACE.
1009	135954.086	385212.501	FOUND 5/8" IRON ROD W/A 1 1/2" ALUM. CAP STAMPED "OREG. STATE HWY. DEPT." 60 mm BELOW SURFACE SET IN CONC. IN GOOD CONDITION. PADDLE BOARD NEARBY MARKED "SHRP P.S. LS 353+60.12 " 32.0 FT. RT. (DRG. *8B-31-12)
1010	135487.163	384816.950	FOUND 5/8" IRON ROD W/A 1 1/2" ALUM. CAP STAMPED "OREG. STATE HWY. DEPT." 150 mm BELOW SURFACE SET IN CONC. IN GOOD CONDITION. STATION EQ. LS POT 374+66.86 = 374+66.86 PS LN, 42.0 FT. LT.
1011	135462.605	384835.495	FOUND 5/8" IRON ROD W/A 1 1/2" ALUM. CAP STAMPED "OREG. STATE HWY. DEPT." 150 mm BELOW SURFACE IN GOOD CONDITION. PADDLE BOARD NEARBY MARKED "SHRW POT LS 374+66.86 PS LN 374+66.86 42.0 FT. LT. OF LN. (DRG. *8B-31-12)
15RM2	135805.959	385219.705	FOUND 2 1/8" BRASS DISK SET IN CONC. MOUND STAMPED "DOUGLAS CO. SURVEYORS OFFICE 1985 PTS-15 RM-2". MOUND PROTRUDES 110 mm ABOVE GROUND IN GOOD CONDITION.
SC1	135634.106	385172.906	FOUND 3 1/2" BRASS DISK STAMPED "US GENERAL LAND OFFICE SURVEY 1973 PENALTY \$250 FOR REMOVAL T31S R5W S23 S24 S25 S26". DISK SET IN EAST EDGE OF OLD HIGHWAY 99 FLUSH WITH PAVEMENT IN GOOD CONDITION.
PTS15	135809.297	385209.813	FOUND 2 1/8" BRASS DISK SET IN ROCK STAMPED "DOUGLAS CO. SURVEYORS OFFICE 1975 PTS-15" FLUSH WITH SURFACE IN GOOD CONDITION.



1 METER = 3937 U.S. FEET / 1200
TO CONVERT A METRIC DISTANCE DIVIDE BY 0.30480061

OREGON DEPARTMENT OF TRANSPORTATION
HORIZONTAL CONTROL
AND RECOVERY MAP
CANYONVILLE - AZALEA SECTION
INTERSTATE 5
DOUGLAS COUNTY
3500 STEWART PARKWAY, SUITE 140
ROSEBURG, OREGON 97470

OCTOBER 26, 2000
PROJECT KEY *10832

SHEET 9 OF 16

ST. HWY. 15-0101.

MAP FILE M135-71 I

MAP FILE M135-71 I