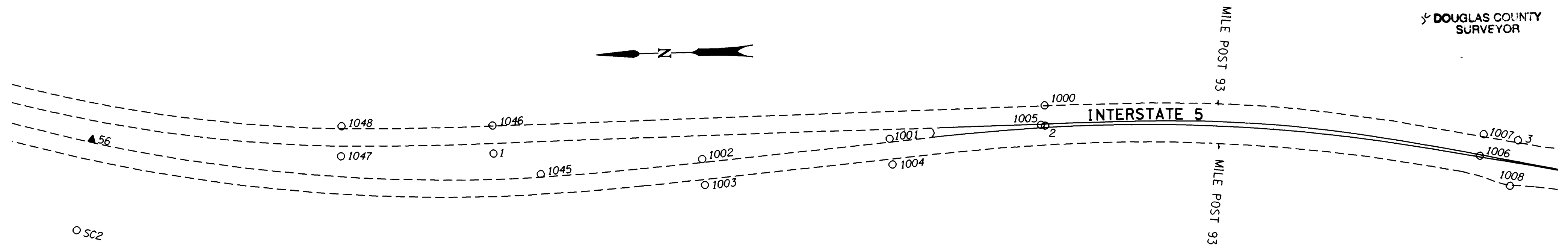


COUNTY SURVEYORS FILE DATA  
DO NOT REMOVE FROM OFFICE

NW 1/4 & SW 1/4 SEC. 24, T. 31 S., R. 5 W., W.M.

FILED  
Date: 10/30/2000 By: JP  
This survey consists of: 16 Pgs.  
Map: M135-71 H  
Narrative: \_\_\_\_\_  
Corner Rpt: \_\_\_\_\_  
DOUGLAS COUNTY SURVEYOR

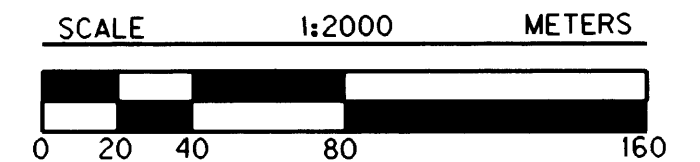


POINT ID	LDP NORTHING	LDP EASTING	DESCRIPTION
1	136935.449	385307.594	FOUND 5/8" IRON ROD W/A 1 1/2" ALUM. CAP STAMPED "OREG. STATE HWY. DEPT." FLUSH W/ SURFACE SET IN CONC. IN GOOD CONDITION. PADDLE BOARD NEARBY MARKED "SHRP PT LN 320+72.80" 40.0 FT. RT. (DRG. NO. 8B-31-12)
2	136546.750	385317.488	FOUND 5/8" IRON ROD W/A 1 1/2" ALUM. CAP STAMPED "OREG. STATE HWY. DEPT." 50 mm ABOVE PAVEMENT IN GOOD CONDITION. PADDLE BOARD ON GUARDRAIL POST MARKED "PS LN 333+49.00" 22.0 FT. RT. (DRG. NO. 8B-31-12)
3	136213.889	385298.514	FOUND 5/8" IRON REBAR W/A 1 1/2" ALUM. CAP STAMPED "OREG. STATE HWY. DIV." SET IN CONCRETE STA. EQ. "LS" 344+68.52 P.T.= "LN" 344+44.59 P.O.T., 42.0 FT. LT. FLUSH W/ SURFACE IN GOOD CONDITION.
56	137217.767	385325.801	SET 16 mm X 762 mm IRON REBAR W/A 38 mm BRASS CAP STAMPED "ODOT CONTROL 56" FLUSH W/ SURFACE.
1000	136546.807	385331.813	FOUND 5/8" IRON ROD W/A 1 1/2" ALUM. CAP STAMPED "OREG. STATE HWY. DEPT." 200 mm BELOW SURFACE SET IN CONC. IN GOOD CONDITION. PADDLE BOARD NEARBY MARKED "PS LN 333+49.00 SHRW". (DRG. *8B-31-12)
1001	136656.475	385310.973	FOUND 5/8" IRON ROD W/A 1 1/2" ALUM. CAP STAMPED "OREG. STATE HWY. DEPT." 150 mm BELOW SURFACE SET IN CONC. IN GOOD CONDITION. PADDLE BOARD NEARBY MARKED "SHRP PS LS 330+22.96" 25.0 FT. LT. (DRG. *8B-31-12)
1002	136788.802	385299.938	FOUND 5/8" IRON ROD W/A 1 1/2" ALUM. CAP STAMPED "OREG. STATE HWY. DEPT." 200 mm BELOW SURFACE SET IN CONC. IN GOOD CONDITION. PADDLE BOARD NEARBY MARKED "SHRP PT LS 325+87.18". (DRG. *8B-31-12)
1003	136787.340	385281.693	FOUND 5/8" IRON ROD W/A 1 1/2" ALUM. CAP STAMPED "OREG. STATE HWY. DIV." FLUSH W/ SURFACE SET IN CONC. IN GOOD CONDITION. STATION LS 325+87.18 P.T. 35.0 FT. RT. (DRG. *8B-31-12)
1004	136654.953	385292.756	FOUND 5/8" IRON ROD W/A 1 1/2" ALUM. CAP STAMPED "OREG. STATE HWY. DEPT." FLUSH W/ SURFACE SET IN CONC. IN GOOD CONDITION. STATION LS 330+22.96 P.S. (DRG. *8B-31-12)
1005	136549.722	385318.229	FOUND 5/8" IRON ROD W/A 1 1/2" ALUM. CAP STAMPED "OREG. STATE HWY. DEPT." 50 mm ABOVE PAVEMENT IN GOOD CONDITION. PADDLE BOARD NEARBY MARKED "SHRW PSC LS 333+72.96". REFERENCE LT. OF SB 25.0 FT. (DRG. *8B-31-12)
1006	136241.078	385288.267	FOUND 5/8" IRON ROD W/A 1 1/2" ALUM. CAP STAMPED "OREG. STATE HWY. DIV." SET FLUSH W/ CONC. 60 mm ABOVE PAVEMENT IN GOOD CONDITION. PADDLE BOARD ON GUARDRAIL POST MARKED "SHRP PT LN 343+64.00" 22.0 FT. RT. (DRG. *8B-31-12)
1007	136237.945	385303.485	FOUND 5/8" IRON ROD W/A 1 1/2" ALUM. CAP STAMPED "OREG. STATE HWY. DIV." 180 mm BELOW SURFACE SET IN CONC. IN GOOD CONDITION. PADDLE BOARD NEARBY MARKED "PT LN 343+64.00 SHRW" 25.0 FT. LT. (DRG. *8B-31-12)
1008	136220.485	385266.586	FOUND 2 7/8" BRASS DISK SET IN CONC. STAMPED "STATE HIGHWAY DEPARTMENT ELEVATION FEET BM NO." 110 mm BELOW SURFACE IN GOOD CONDITION. PADDLE BOARD NEARBY MARKED "SHRW PT LS 344+68.52 EQ. P.O.T. LN 344+44.59 42 LT.". (32.0 FT. RT. OF LS STATION)
1045	136902.532	385292.318	FOUND 5/8" IRON ROD W/A 1 1/2" ALUM. CAP STAMPED "OREG. STATE HWY. DEPT." 150 mm BELOW SURFACE IN GOOD CONDITION. PADDLE BOARD NEARBY MARKED "SHRP P.C.S. LS 322+12.18" 25.0 FT. LT. (DRG. *8B-31-12)
1046	136935.664	385327.422	FOUND 5/8" IRON ROD W/A 1 1/2" ALUM. CAP STAMPED "OREG. STATE HWY. DEPT." 120 mm BELOW SURFACE IN GOOD CONDITION. PADDLE BOARD NEARBY MARKED "SHRW P.T. LN 320+72.80" 25.0 FT. LT. (DRG. *8B-31-12)
1047	137042.850	385308.383	FOUND 5/8" IRON ROD W/A 1 1/2" ALUM. CAP STAMPED "OREG. STATE HWY. DEPT." SET IN CONC. FLUSH W/ SURFACE IN GOOD CONDITION. PADDLE BOARD NEARBY MARKED "SHRP P.C.S. LN 317+22.80" 40.0 FT. RT. (DRG. *8B-31-12)
1048	137041.934	385329.679	FOUND 5/8" IRON ROD W/A 1 1/2" ALUM. CAP STAMPED "OREG. STATE HWY. DIV." SET IN CONC. 100 mm BELOW SURFACE IN GOOD CONDITION. PADDLE BOARD NEARBY MARKED "SHRW P.C.S. LN 317+22.80" 25.0 FT. LT. (DRG. *8B-31-12)
SC2	137230.286	385261.260	FOUND 3 1/4" BRASS DISK ON A 2 1/4" IRON PIPE STAMPED "US DEPT. OF THE INTERIOR BUR. OF LAND MANAGEMENT CADASTAL SURVEY UNLAWFUL TO DISTURB 1973 T31S R5W S14 S13 S23 S24" 110mm ABOVE SURFACE IN GOOD CONDITION.

**LEGEND**

- ▲ SET MONUMENT
- FOUND MONUMENT
- EDGE OF PAVEMENT
- ==== METAL MEDIAN BARRIER

REGISTERED PROFESSIONAL LAND SURVEYOR  
*Christine V. Blewins*  
OREGON JULY 18, 1994  
CHRISTINE V. BLEWINS 2000  
EXPIRES: DEC. 31, 2001



1 METER = 3937 U.S. FEET / 1200  
TO CONVERT A METRIC DISTANCE DIVIDE BY 0.30480061

OREGON DEPARTMENT OF TRANSPORTATION  
HORIZONTAL CONTROL AND RECOVERY MAP  
CANYONVILLE - AZALEA SECTION  
INTERSTATE 5  
DOUGLAS COUNTY  
3500 STEWART PARKWAY, SUITE 140  
ROSEBURG, OREGON 97470  
OCTOBER 26, 2000  
PROJECT KEY \*10832  
SHEET 8 OF 16

ST. HWY. 15-010H,

MAP FILE M135-71 H

MAP FILE M135-71 H