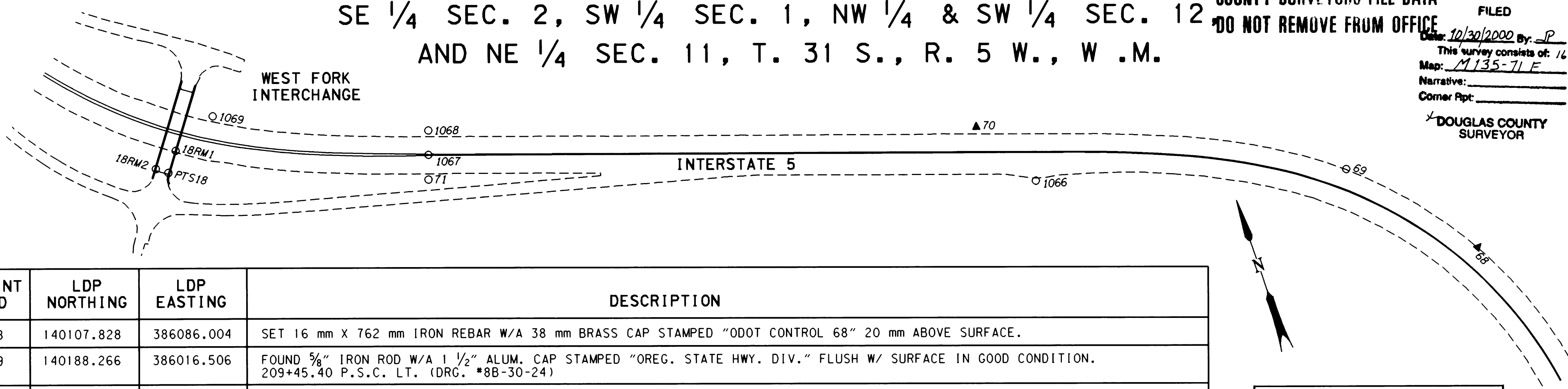


SE 1/4 SEC. 2, SW 1/4 SEC. 1, NW 1/4 & SW 1/4 SEC. 12
AND NE 1/4 SEC. 11, T. 31 S., R. 5 W., W.M.

COUNTY SURVEYORS FILE DATA
DO NOT REMOVE FROM OFFICE

FILED
Date: 10/30/2000 By: JP
This survey consists of: 16 Pgs.
Map: M135-71E
Narrative: _____
Corner Rpt: _____
DOUGLAS COUNTY
SURVEYOR

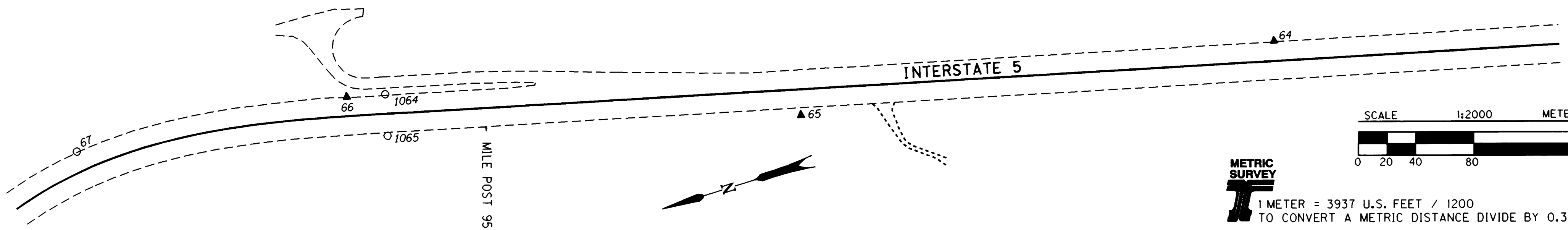


POINT ID	LDP NORTHING	LDP EASTING	DESCRIPTION
68	140107.828	386086.004	SET 16 mm X 762 mm IRON REBAR W/A 38 mm BRASS CAP STAMPED "ODOT CONTROL 68" 20 mm ABOVE SURFACE.
69	140188.266	386016.506	FOUND 5/8" IRON ROD W/A 1 1/2" ALUM. CAP STAMPED "OREG. STATE HWY. DIV." FLUSH W/ SURFACE IN GOOD CONDITION. 209+45.40 P.S.C. LT. (DRG. *8B-30-24)
70	140299.310	385783.184	SET 16 mm X 762 mm IRON REBAR W/A 38 mm BRASS CAP STAMPED "ODOT CONTROL 70" FLUSH W/ SURFACE.
71	140385.720	385411.734	FOUND 5/8" IRON ROD W/A 1 1/2" ALUM. CAP STAMPED "OREG. STATE HWY. DIV." FLUSH W/ SURFACE SET IN CONC. IN GOOD CONDITION. STA. NB 188+64.57 P.T. = L 188+64.57 P.O.T., 21 FT. LT. REFERENCE RIGHT (DRG. *8B-30-24)
PTS18	140448.172	385242.598	FOUND DOUGLAS CO. SURVEYORS BRASS STEM WITH PUNCH MARK, BRASS DISK HAS BEEN GRADED OFF BUT STEM IS STILL GOOD, SET IN BRIDGE DECK OF CANYON CREEK OVERPASS CROSSING SE CORNER.
18RM1	140461.039	385252.236	FOUND 2 7/8" BRASS DISK STAMPED "DOUGLAS CO. SURVEYORS OFFICE 1985 PTS-18 RM1" SET IN CONC. WALK OF CANYON CREEK OVERCROSSING FLUSH W/ SURFACE IN GOOD CONDITION.
18RM2	140453.490	385235.281	FOUND 2 7/8" BRASS DISK STAMPED "DOUGLAS CO. SURVEYORS OFFICE 1985 PTS-18 RM2" SET FLUSH IN CONC. WALK OF CANYON CREEK OVERCROSSING IN GOOD CONDITION.
1066	140249.937	385810.045	FOUND 5/8" IRON ROD W/A 1 1/2" ALUM. CAP STAMPED "OREG. STATE HWY. DIV." SET IN CONC. 130 mm BELOW SURFACE IN GOOD CONDITION. PADDLE BOARD NEARBY MARKED "SHRW P.S. LC 202+45.40" REFERENCE RIGHT. (DRG. *8B-30-24)
1067	140401.907	385417.143	FOUND 5/8" IRON ROD W/A 1 1/2" ALUM. CAP STAMPED "OREG. STATE HWY. DEPT." SET IN CONC. FLUSH W/ SURFACE IN GOOD CONDITION. PADDLE BOARD ON GUARDRAIL POST NEARBY MARKED "SHRP" STATION EQ. LN 188+64.57 P.T. = LC 188+64.57 P.O.T., AT CENTERLINE. (DRG. *8B-30-24)
1068	140418.096	385422.550	FOUND 5/8" IRON ROD W/A 1 1/2" ALUM. CAP STAMPED "OREG. STATE HWY. DIV." SET IN CONC. FLUSH W/ SURFACE IN GOOD CONDITION. PADDLE BOARD NEARBY MARKED "SHRW P.T. LN 188+64.57 EQ. P.O.T. LC 188+64.57 P.T." (DRG. *8B-30-24)
1069	140475.452	385284.270	FOUND 2 3/4" BRASS DISK STAMPED "STATE HIGHWAY DEPARTMENT REFERENCE" SET IN CONC. 100 mm BELOW SURFACE IN GOOD CONDITION. PADDLE BOARD NEARBY MARKED "SHRW P.C.S. LN 183+64.57" REFERENCE LEFT. (DRG. *8B-30-24)

LEGEND

- ▲ SET MONUMENT
- FOUND MONUMENT
- CONCRETE BARRIER
- - - EDGE OF PAVEMENT
- == METAL MEDIAN BARRIER

REGISTERED
PROFESSIONAL
LAND SURVEYOR
Christine Y. Blevins
OREGON
JULY 19, 1994
CHRISTINE Y. BLEVINS
2000
EXPIRES: DEC. 31, 2001



64	139174.433	385946.887	SET 16 mm X 762 mm IRON REBAR W/A 38 mm BRASS CAP STAMPED "ODOT CONTROL 64" FLUSH W/ SURFACE.
65	139502.589	385997.705	SET 16 mm X 762 mm IRON REBAR W/A 38 mm BRASS CAP STAMPED "ODOT CONTROL 65" FLUSH W/ SURFACE.
66	139798.460	386105.571	SET 16 mm X 762 mm IRON REBAR W/A 38 mm BRASS CAP STAMPED "ODOT CONTROL 66" FLUSH W/ SURFACE, SET THROUGH PAVEMENT.
67	139988.240	386125.813	FOUND 5/8" IRON ROD W/A 1 1/2" ALUM. CAP STAMPED "OREG. STATE HWY. DIV." 70 mm BELOW SURFACE IN GOOD CONDITION. PADDLE BOARD NEARBY MARKED "SHRW P.C.S. LC 216+76.71 45" LT. (DRG. *8B-30-24)
1064	139772.734	386098.328	FOUND 5/8" IRON ROD W/A 1 1/2" ALUM. CAP STAMPED "OREG. STATE HWY. DIV." SET IN CONC. 200 mm BELOW SURFACE IN GOOD CONDITION. 223+76.51 P.T. LEFT. (DRG. *8B-30-24)
1065	139779.970	386070.304	FOUND 5/8" IRON ROD W/A 1 1/2" ALUM. CAP STAMPED "OREG. STATE HWY. DIV." SET IN CONC. 100 mm BELOW SURFACE IN GOOD CONDITION. 223+76.51 P.T. RIGHT. (DRG. *8B-30-24)

METRIC SURVEY
1 METER = 3937 U.S. FEET / 1200
TO CONVERT A METRIC DISTANCE DIVIDE BY 0.30480061

OREGON DEPARTMENT OF TRANSPORTATION
HORIZONTAL CONTROL
AND RECOVERY MAP
CANYONVILLE - AZALEA SECTION
INTERSTATE 5
DOUGLAS COUNTY
3500 STEWART PARKWAY, SUITE 140
ROSEBURG, OREGON 97470
OCTOBER 26, 2000
PROJECT KEY #10832
SHEET 6 OF 16

ST. HWY. 15-010F

MAP FILE M135-71E

MAP FILE M135-71E