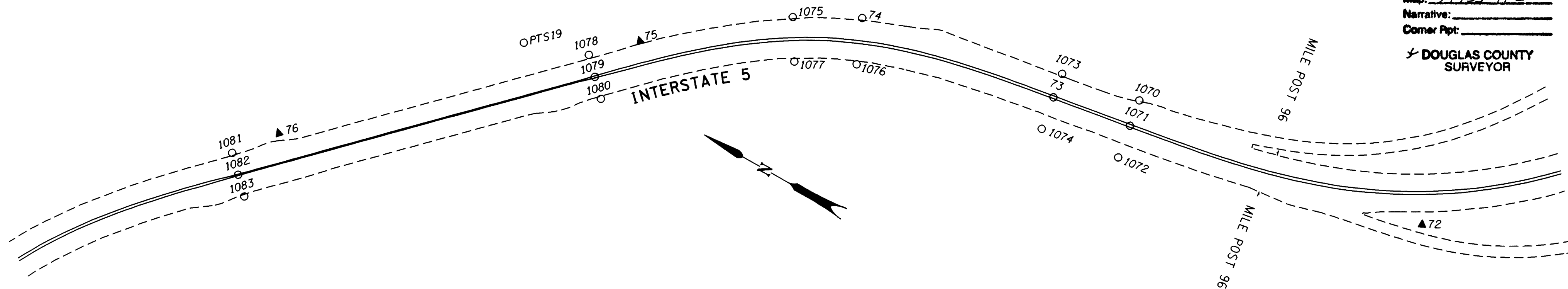


COUNTY SURVEYORS FILE DATA
DO NOT REMOVE FROM OFFICE

NE 1/4 & SE 1/4 SEC. 2, T. 31 S., R. 5 W., W.M.

FILED
Date: 10/30/2000 By: JP
This survey consists of: 16 P&S.
Map: M135-71E
Narrative: _____
Corner Ppt: _____
DOUGLAS COUNTY SURVEYOR

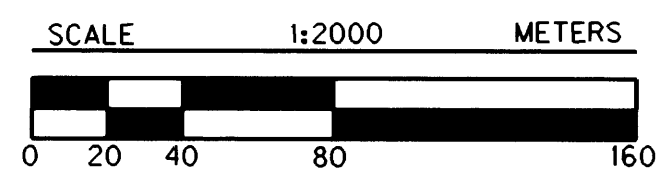


POINT ID	LDP NORTHING	LDP EASTING	DESCRIPTION
72	140576.697	385132.715	SET 16 mm X 762 mm IRON REBAR W/A 38 mm BRASS CAP STAMPED "ODOT CONTROL 72" 30 mm BELOW SURFACE.
73	140839.477	385083.585	FOUND 5/8" IRON ROD W/A 1 1/2" ALUM. CAP STAMPED "OREG. STATE HWY. DEPT." 60 mm ABOVE SURFACE SET IN CONC. PEDESTAL. PADDLE BOARD MOUNTED ON GUARDRAIL POST MARKED "SHRW P.T. LS 169+32.33" CENTER LINE. (DRG. *8B-30-24)
74	140980.204	385066.163	FOUND 5/8" IRON ROD W/A 1 1/2" ALUM. CAP STAMPED "OREG. STATE HWY. DIV." 200 mm BELOW SURFACE SET IN CONC. IN GOOD CONDITION. PADDLE BOARD NEARBY MARKED "SHRW P.C.S. LS 164+32.63" REFERENCE LEFT. (DRG. *8B-30-24)
75	141105.329	384977.848	SET 16 mm X 762 mm IRON REBAR W/A 38 mm BRASS CAP STAMPED "ODOT CONTROL 75" FLUSH WITH SURFACE.
76	141289.543	384800.967	SET 16 mm X 762 mm IRON REBAR W/A 38 mm BRASS CAP STAMPED "ODOT CONTROL 76" FLUSH W/ SURFACE.
1070	140787.159	385110.825	FOUND 5/8" IRON ROD W/A 1 1/2" ALUM. CAP STAMPED "OREG. STATE HWY. DIV." SET IN CONC. 200 mm BELOW SURFACE IN GOOD CONDITION. PADDLE BOARD NEARBY MARKED "SHRW EQ. P.O.T. LS 171+16.24, P.O.T. LN 171+16.24 42 FT. LEFT" LEFT REFERENCE. (DRG. *8B-30-24)
1071	140784.224	385092.466	FOUND 5/8" IRON ROD W/A 1 1/2" ALUM. CAP STAMPED "OREG. STATE HWY. DEPT." SET IN CONC. PEDESTAL 70 mm ABOVE SURFACE IN GOOD CONDITION. PADDLE BOARD MOUNTED ON GUARDRAIL POST MARKED "SHRW P.O.T. LS 171+16.24 BK P.S. LN 171+16.24 AH, 42 LT." AT CENTER LINE. (DRG. *8B-30-24)
1072	140780.540	385069.607	FOUND 5/8" IRON ROD W/A 1 1/2" ALUM. CAP STAMPED "OREG. STATE HWY. DIV." SET IN CONC. 70 mm BELOW SURFACE IN GOOD CONDITION. PADDLE BOARD NEARBY MARKED "SHRW EQ P.O.T. LS 171+16.24 P.O.T. LN 171+16.24 42 FT. LT." REFERENCE RIGHT. (DRG. *8B-30-24)
1073	140842.194	385100.433	FOUND 5/8" IRON ROD W/A 1 1/2" ALUM. CAP STAMPED "OREG. STATE HWY. DIV." SET IN CONC. 150 mm BELOW SURFACE IN GOOD CONDITION. STATION P.T. LS 169+32.63 REFERENCE LEFT. (DRG. *8B-30-24)
1074	140835.802	385060.731	FOUND 5/8" IRON ROD W/A 1 1/2" ALUM. CAP STAMPED "OREG. STATE HWY. DIV." SET IN CONC. 50 mm ABOVE SURFACE IN GOOD CONDITION. PADDLE BOARD NEARBY MARKED "SHRW P.T. 169+32.63" REFERENCE RIGHT. (DRG. *8B-30-24)
1075	141021.902	385043.233	FOUND 5/8" IRON ROD W/A 1 1/2" ALUM. CAP STAMPED "OREG. STATE HWY. DIV." SET IN CONC. 180 mm BELOW SURFACE IN GOOD CONDITION. PADDLE BOARD NEARBY MARKED "SHRW P.S.C. LS 163+36.94" REFERENCE LEFT. (DRG. *8B-30-24)
1076	140967.936	385036.649	FOUND 5/8" IRON ROD W/A 1 1/2" ALUM. CAP STAMPED "OREG. STATE HWY. DIV." SET IN CONC. 120 mm BELOW SURFACE. PADDLE BOARD NEARBY MARKED "SHRW P.C.S. LS 164+32.63" REFERENCE RIGHT. (DRG. *8B-30-24)
1077	141005.984	385017.253	FOUND 5/8" IRON ROD W/A 1 1/2" ALUM. CAP STAMPED "OREG. STATE HWY. DIV." SET IN CONC. 200 mm BELOW SURFACE IN GOOD CONDITION. STATION 163+36.94 P.S.C. SB. REFERENCE RIGHT. (DRG. *8B-30-24)
1078	141130.667	384951.793	FOUND 5/8" IRON ROD W/A 1 1/2" ALUM. CAP STAMPED "OREG. STATE HWY. DIV." SET IN CONC. 220 mm BELOW SURFACE IN GOOD CONDITION. STATION 158+86.94 P.S. REFERENCE LEFT. (DRG. *8B-30-24)
1079	141119.697	384940.784	FOUND 5/8" IRON ROD W/A 1 1/2" ALUM. CAP STAMPED "OREG. STATE HWY. DEPT." SET IN CONC. PEDESTAL 80 mm ABOVE SURFACE IN GOOD CONDITION. PADDLE BOARD ON GUARDRAIL POST MARKED "P.S. LS 158+86.94" CENTER LINE. (DRG. *8B-30-24)
1080	141108.725	384929.755	FOUND 5/8" IRON ROD W/A 1 1/2" ALUM. CAP STAMPED "OREG. STATE HWY. DIV." SET IN CONC. 230 mm BELOW SURFACE IN GOOD CONDITION. PADDLE BOARD NEARBY MARKED "SHRW P.S. LS 158+86.94" REFERENCE RIGHT. (DRG. *8B-30-24)
1081	141310.233	384772.981	FOUND 5/8" IRON ROD W/A 1 1/2" ALUM. CAP STAMPED "OREG. STATE HWY. DIV." SET IN CONC. 150 mm BELOW SURFACE IN GOOD CONDITION. PADDLE BOARD NEARBY MARKED "SHRW P.T. LS 150+55.62" REFERENCE LEFT. (DRG. *8B-30-24)
1082	141299.260	384761.969	FOUND 5/8" IRON ROD W/A 1 1/2" ALUM. CAP STAMPED "OREG. STATE HWY. DEPT." SET IN CONC. PEDESTAL FLUSH W/ SURFACE IN GOOD CONDITION. STATION P.T. LS 150+55.62 CENTER LINE. (DRG. *8B-30-24)
1083	141288.280	384750.958	FOUND 5/8" IRON ROD W/A 1 1/2" ALUM. CAP STAMPED "OREG. STATE HWY. DIV." SET 40 mm ABOVE CONC. AND 100 mm BELOW SURFACE IN GOOD CONDITION. PADDLE BOARD LYING BESIDE MONUMENT MARKED "SHRW P.T. LS 150+55.62" REFERENCE RIGHT. (DRG. *8B-30-24)
PTS19	141173.486	384937.067	FOUND 2 7/8" BRASS DISK SET IN ROCK STAMPED "DOUGLAS CO. SURVEYORS OFFICE PTS-19 1975" FLUSH W/ SURFACE IN GOOD CONDITION. WITNESS POST NEARBY.

LEGEND

- ▲ SET MONUMENT
- FOUND MONUMENT
- CONCRETE BARRIER
- - - EDGE OF PAVEMENT
- ==== METAL MEDIAN BARRIER

REGISTERED PROFESSIONAL LAND SURVEYOR
Christine V. Bluvins
OREGON JULY 19, 1994
CHRISTINE V. BLUVINS
2000
EXPIRES: DEC. 31, 2001



METRIC SURVEY
1 METER = 3937 U.S. FEET / 1200
TO CONVERT A METRIC DISTANCE DIVIDE BY 0.30480061

OREGON DEPARTMENT OF TRANSPORTATION
HORIZONTAL CONTROL AND RECOVERY MAP
CANYONVILLE - AZALEA SECTION
INTERSTATE 5
DOUGLAS COUNTY
3500 STEWART PARKWAY, SUITE 140
ROSEBURG, OREGON 97470
OCTOBER 26, 2000
PROJECT KEY *10832
SHEET 5 OF 16

ST. HWY. 15-010E

MAP FILE M135-71E

MAP FILE M135-71E