

COUNTY SURVEYORS FILE DATA
DO NOT REMOVE FROM OFFICE

SW 1/4 SEC. 35, T. 30 S., R. 5 W. AND NW 1/4 SEC. 2,
T. 31 S., R. 5 W., W.M.

FILED

Date: 10/30/2000 By: JP
This survey consists of: 16 Pgs.
Map: M135-71D
Narrative: _____
Corner Rpt: _____

DOUGLAS COUNTY
SURVEYOR

POINT ID	LDP NORTHING	LDP EASTING	DESCRIPTION
77	141401.094	384668.494	FOUND 5/8" IRON ROD W/A 1 1/2" ALUM. CAP SET IN CONC. STAMPED "OREG. STATE HWY. DIV." 150 mm BELOW SURFACE IN GOOD CONDITION. PADDLE BOARD NEARBY MARKED "SHRW P.C.S. LS 146+15.62" REFERENCE LEFT. (DRG. *8B-30-24)
78	141452.188	384569.106	SET 16 mm X 762 mm IRON REBAR W/A 38 mm BRASS CAP STAMPED "ODOT CONTROL 78" 30 mm BELOW SURFACE.
79	141446.252	384468.907	FOUND 5/8" IRON ROD W/A 1 1/2" ALUM. CAP STAMPED "OREG. STATE HWY. DIV." 30 mm BELOW SURFACE SET IN CONC. IN GOOD CONDITION. STATION 139+61.67 P.T. REFERENCE RIGHT. (DRG. *8B-30-24)
80	141532.038	384291.356	FOUND 5/8" IRON ROD W/A 1 1/2" ALUM. CAP STAMPED "OREG. STATE HWY. DIV." 100 mm BELOW SURFACE SET IN CONC. IN GOOD CONDITION. PADDLE BOARD NEARBY. STATION NB 133+38.61 P.S.C. REFERENCE RIGHT. (DRG. *8B-30-24)
81	141640.977	384199.938	FOUND 5/8" IRON ROD W/A 1 1/2" ALUM. CAP STAMPED "OREG. STATE HWY. DEPT." FLUSH W/ SURFACE SET IN CONC. FAIR CONDITION. STATION NB 128+88.61 P.S. EQ. S.B. REFERENCE RIGHT, L 128+88.61 P.O.T., 21 FT. LT.
82	141721.825	384180.586	FOUND 5/8" IRON ROD W/A 1 1/2" ALUM. CAP STAMPED "OREG. STATE HWY. DIV." 80 mm BELOW SURFACE SET IN CONC. IN GOOD CONDITION. PADDLE BOARD NEARBY MARKED "SHRW P.T. LC 126+35.72" REFERENCE LEFT. (DRG. *8B-30-24)
83	142021.585	383968.368	FOUND 5/8" IRON ROD W/A 1 1/2" ALUM. CAP STAMPED "OREG. STATE HWY. DIV." 250 mm BELOW SURFACE SET IN CONC. IN GOOD CONDITION. PADDLE BOARD NEARBY MARKED "SHRW LC 114+32.39 P.S." REFERENCE RIGHT. (DRG. *8B-30-24)
PTS20	141933.536	383996.188	FOUND 2 7/8" BRASS DISK STAMPED "DOUGLAS CO. SURVEYORS OFFICE 1975 PTS -20" SET FLUSH IN ROCK.
SC3	142028.085	383897.342	FOUND 3 1/4" BRASS DISK STAMPED "U.S. DEPT. OF THE INTERIOR BUR. OF LAND MANAGEMENT CADASTRAL SURVEY UNLAWFUL TO DISTURB 1967 T30S R5W S35 T31S R5W S3 S2" SET ON A 2 1/4" IRON PIPE 90 mm ABOVE SURFACE IN GOOD CONDITION.
1084	141412.534	384649.727	FOUND 5/8" IRON ROD W/A 1 1/2" ALUM. CAP STAMPED "OREG. STATE HWY. DIV." SET IN CONC. 100 mm BELOW SURFACE IN GOOD CONDITION. PADDLE BOARD NEARBY MARKED "SHRW P.S.C. LS 145+48.04" REFERENCE LEFT. (DRG. *8B-30-24)
1085	141462.777	384520.730	FOUND 5/8" IRON ROD W/A 1 1/2" ALUM. CAP STAMPED "OREG. STATE HWY. DIV." SET IN CONC. 200 mm BELOW SURFACE IN GOOD CONDITION. PADDLE BOARD NEARBY MARKED "SHRW P.O.T. LN 141+08.04 EQ. P.S. LS 141+08.04 42 FT. RT." REFERENCE LEFT. (DRG. *8B-30-24)
1086	141447.935	384516.137	FOUND 5/8" IRON ROD W/A 1 1/2" ALUM. CAP STAMPED "OREG. STATE HWY. DEPT." SET IN CONC. PEDESTAL 60 mm ABOVE SURFACE IN GOOD CONDITION. PADDLE BOARD MOUNTED ON GUARDRAIL POST MARKED "P.S. LN 141+08.04 P.O.T. LS 141+08.04" CENTER LINE. (DRG. *8B-30-24)
1087	141433.073	384511.550	FOUND 5/8" IRON ROD W/A 1 1/2" ALUM. CAP STAMPED "OREG. STATE HWY. DIV." SET IN CONC. 200 mm BELOW SURFACE IN GOOD CONDITION. STATION EQ. P.S. LS 141+08.04 P.O.T. LN 141+08.04, 42.0 FT. RT. REFERENCE RIGHT. (DRG. *8B-30-24)
1088	141475.976	384478.086	FOUND 5/8" IRON ROD W/A 1 1/2" ALUM. CAP STAMPED "OREG. STATE HWY. DEPT." SET IN CONC. 100 mm BELOW SURFACE IN GOOD CONDITION. STATION 139+61.67 P.T. REFERENCE LEFT. (DRG. *8B-30-24)
1089	141461.110	384473.499	FOUND 5/8" IRON ROD W/A 1 1/2" ALUM. CAP STAMPED "OREG. STATE HWY. DEPT." SET IN CONC. PEDESTAL 100 mm ABOVE PAVEMENT SURFACE IN GOOD CONDITION. STATION 139+61.67 P.T., 21.0 FT. RT., CENTER LINE. (DRG. *8B-30-24)
1090	141498.864	384337.049	FOUND 5/8" IRON ROD W/A 1 1/2" ALUM. CAP STAMPED "OREG. STATE HWY. DIV." SET IN CONC. 110 mm BELOW SURFACE IN GOOD CONDITION. PADDLE BOARD NEARBY MARKED "SHRW P.S.C. LN 135+38.67" REFERENCE RIGHT. (DRG. *8B-30-24)

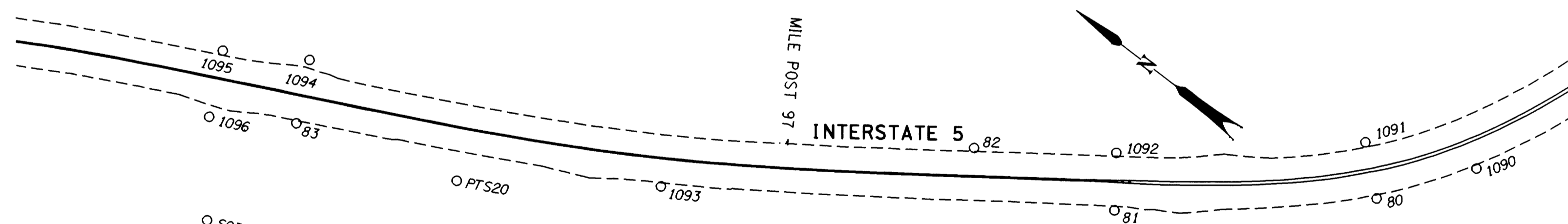
LEGEND	
▲	SET MONUMENT
○	FOUND MONUMENT
—	CONCRETE BARRIER
- - -	EDGE OF PAVEMENT
≡	METAL MEDIAN BARRIER

REGISTERED
PROFESSIONAL
LAND SURVEYOR

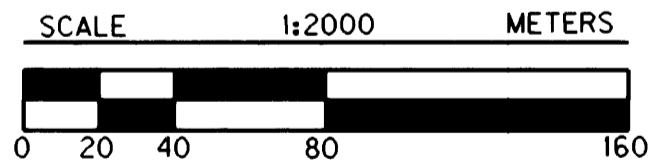
Christine T. Blvin

OREGON
JULY 19, 1994
CHRISTINE T. BLVIN
2000

EXPIRES: DEC. 31, 2001



1 METER = 3937 U.S. FEET / 1200
TO CONVERT A METRIC DISTANCE DIVIDE BY 0.30480061



1091	141555.413	384311.838	FOUND 5/8" IRON ROD W/A 1 1/2" ALUM. CAP STAMPED "OREG. STATE HWY. DIV." SET IN CONC. 100 mm BELOW SURFACE IN GOOD CONDITION. STATION 133+38.61 P.S.C. REFERENCE LEFT. (DRG. *8B-30-24)
1092	141659.013	384225.276	FOUND 5/8" IRON ROD W/A 1 1/2" ALUM. CAP STAMPED "OREG. STATE HWY. DIV." SET IN CONC. 120 mm BELOW SURFACE IN GOOD CONDITION. STATION EQ. L 128+88.61 P.O.T. (21 FT. LT.) = NB 128+88.61 P.S. (DRG. *8B-30-24)
1093	141843.785	384060.991	FOUND 5/8" IRON ROD W/A 1 1/2" ALUM. CAP STAMPED "OREG. STATE HWY. DIV." SET IN CONC. 50 mm BELOW SURFACE IN GOOD CONDITION. PADDLE BOARD NEARBY MARKED "SHRW P.C.S. LC 120+85.72" REFERENCE RIGHT. (DRG. *8B-30-24)
1094	142036.725	383999.972	FOUND 5/8" IRON ROD W/A 1 1/2" ALUM. CAP STAMPED "OREG. STATE HWY. DIV." SET IN CONC. FLUSH W/ SURFACE IN GOOD CONDITION. STATION 114+32.39 P.S. REFERENCE LEFT. (DRG. *8B-30-24)
1095	142077.098	383975.573	FOUND 5/8" IRON ROD W/A 1 1/2" ALUM. CAP STAMPED "OREG. STATE HWY. DIV." SET IN CONC. 150 mm BELOW SURFACE IN GOOD CONDITION. STATION 112+78.26 P.T. REFERENCE LEFT. (DRG. *8B-30-24)
1096	142061.304	383942.583	FOUND 5/8" IRON ROD W/A 1 1/2" ALUM. CAP STAMPED "OREG. STATE HWY. DIV." SET IN CONC. 50 mm BELOW SURFACE IN GOOD CONDITION. STATION 112+78.26 P.T. REFERENCE RIGHT. (DRG. *8B-30-24)

OREGON DEPARTMENT OF TRANSPORTATION
HORIZONTAL CONTROL
AND RECOVERY MAP
CANYONVILLE - AZALEA SECTION
INTERSTATE 5
DOUGLAS COUNTY
3500 STEWART PARKWAY, SUITE 140
ROSEBURG, OREGON 97470

OCTOBER 26, 2000
PROJECT KEY *10832

SHEET 4 OF 16

ST. HWY. 15-010D

MAP FILE M135-71D

MAP FILE M135-71D