

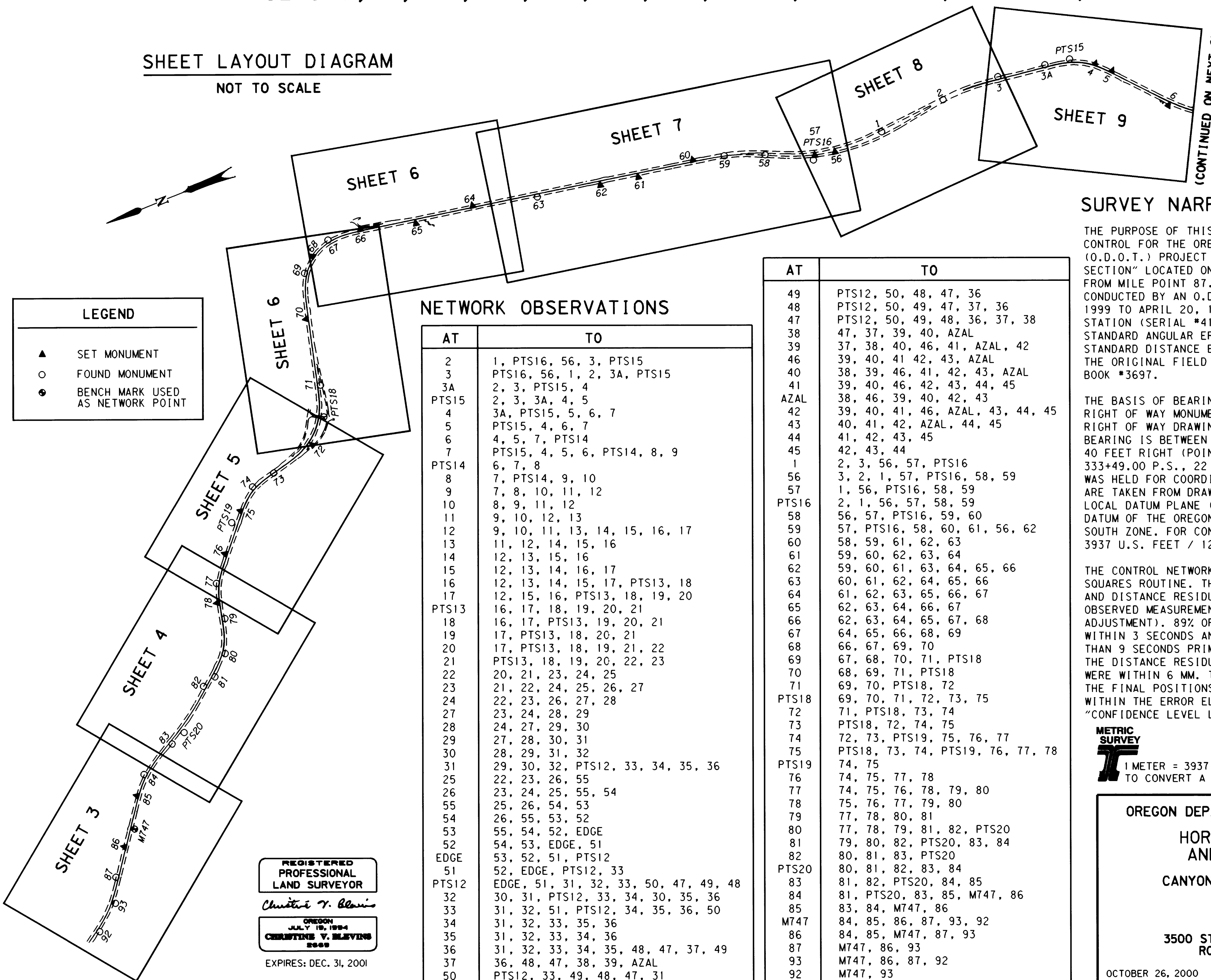
COUNTY SURVEYORS FILE DATA
DO NOT REMOVE FROM OFFICE

SEC. 34 & 35, T. 30 S., R. 5 W., AND
SEC. 1, 2, 11, 12, 13, 23, 24, & 26, T. 31 S., R. 5 W., W.M.

FILED

Date: 10/30/2000 By: JP
This survey consists of: 16 Pgs.
Map: M135-71 A
Narrative: _____
Corner Rpt: _____
DOUGLAS COUNTY SURVEYOR

SHEET LAYOUT DIAGRAM
NOT TO SCALE



LEGEND

- ▲ SET MONUMENT
- FOUND MONUMENT
- BENCH MARK USED AS NETWORK POINT

NETWORK OBSERVATIONS

AT	TO
2	1, PTS16, 56, 3, PTS15
3	PTS16, 56, 1, 2, 3A, PTS15
3A	2, 3, PTS15, 4
PTS15	2, 3, 3A, 4, 5
4	3A, PTS15, 5, 6, 7
5	PTS15, 4, 6, 7
6	4, 5, 7, PTS14
7	PTS15, 4, 5, 6, PTS14, 8, 9
PTS14	6, 7, 8
8	7, PTS14, 9, 10
9	7, 8, 10, 11, 12
10	8, 9, 11, 12
11	9, 10, 12, 13
12	9, 10, 11, 13, 14, 15, 16, 17
13	11, 12, 14, 15, 16
14	12, 13, 15, 16
15	12, 13, 14, 16, 17
16	12, 13, 14, 15, 17, PTS13, 18
17	12, 15, 16, PTS13, 18, 19, 20
PTS13	16, 17, 18, 19, 20, 21
18	16, 17, PTS13, 19, 20, 21
19	17, PTS13, 18, 20, 21
20	17, PTS13, 18, 19, 21, 22
21	PTS13, 18, 19, 20, 22, 23
22	20, 21, 23, 24, 25
23	21, 22, 24, 25, 26, 27
24	22, 23, 26, 27, 28
27	23, 24, 28, 29
28	24, 27, 29, 30
29	27, 28, 30, 31
30	28, 29, 31, 32
31	29, 30, 32, PTS12, 33, 34, 35, 36
25	22, 23, 26, 55
26	23, 24, 25, 55, 54
55	25, 26, 54, 53
54	26, 55, 53, 52
53	55, 54, 52, EDGE
52	54, 53, EDGE, 51
EDGE	53, 52, 51, PTS12
51	52, EDGE, PTS12, 33
PTS12	EDGE, 51, 31, 32, 33, 50, 47, 49, 48
32	30, 31, PTS12, 33, 34, 30, 35, 36
33	31, 32, 51, PTS12, 34, 35, 36, 50
34	31, 32, 33, 35, 36
35	31, 32, 33, 34, 36
36	31, 32, 33, 34, 35, 48, 47, 37, 49
37	36, 48, 47, 38, 39, AZAL
50	PTS12, 33, 49, 48, 47, 31

AT	TO
49	PTS12, 50, 48, 47, 36
48	PTS12, 50, 49, 47, 37, 36
47	PTS12, 50, 49, 48, 36, 37, 38
38	47, 37, 39, 40, AZAL
39	37, 38, 40, 46, 41, AZAL, 42
46	39, 40, 41, 42, 43, AZAL
40	38, 39, 46, 41, 42, 43, AZAL
41	39, 40, 46, 42, 43, 44, 45
AZAL	38, 46, 39, 40, 42, 43
42	39, 40, 41, 46, AZAL, 43, 44, 45
43	40, 41, 42, AZAL, 44, 45
44	41, 42, 43, 45
45	42, 43, 44
1	2, 3, 56, 57, PTS16
56	3, 2, 1, 57, PTS16, 58, 59
57	1, 56, PTS16, 58, 59
PTS16	2, 1, 56, 57, 58, 59
58	56, 57, PTS16, 59, 60
59	57, PTS16, 58, 60, 61, 56, 62
60	58, 59, 61, 62, 63
61	59, 60, 62, 63, 64
62	59, 60, 61, 63, 64, 65, 66
63	60, 61, 62, 64, 65, 66
64	61, 62, 63, 65, 66, 67
65	62, 63, 64, 66, 67
66	62, 63, 64, 65, 67, 68
67	64, 65, 66, 68, 69
68	66, 67, 69, 70
69	67, 68, 70, 71, PTS18
70	68, 69, 71, PTS18
71	69, 70, PTS18, 72
PTS18	69, 70, 71, 72, 73, 75
72	71, PTS18, 73, 74
73	PTS18, 72, 74, 75
74	72, 73, PTS19, 75, 76, 77
75	PTS18, 73, 74, PTS19, 76, 77, 78
PTS19	74, 75
76	74, 75, 77, 78
77	74, 75, 76, 78, 79, 80
78	75, 76, 77, 79, 80
79	77, 78, 80, 81
80	77, 78, 79, 81, 82, PTS20
81	79, 80, 82, PTS20, 83, 84
82	80, 81, 83, PTS20
PTS20	80, 81, 82, 83, 84
83	81, 82, PTS20, 84, 85
84	81, PTS20, 83, 85, M747, 86
85	83, 84, M747, 86
M747	84, 85, 86, 87, 93, 92
86	84, 85, M747, 87, 93
87	M747, 86, 93
93	M747, 86, 87, 92
92	M747, 93

SURVEY NARRATIVE

THE PURPOSE OF THIS METRIC SURVEY WAS TO ESTABLISH CONTROL FOR THE OREGON DEPARTMENT OF TRANSPORTATION (O.D.O.T.) PROJECT CALLED "CANYONVILLE - AZALEA SECTION" LOCATED ON INTERSTATE 5 (PACIFIC HIGHWAY) FROM MILE POINT 87.4 TO 97.9. THE SURVEY WAS CONDUCTED BY AN O.D.O.T. SURVEY CREW FROM APRIL 2, 1999 TO APRIL 20, 1999 USING A LEICA TCA 1800 TOTAL STATION (SERIAL #418939). THE TOTAL STATION HAS A STANDARD ANGULAR ERROR OF +/- 1 SECOND AND A STANDARD DISTANCE ERROR OF +/- 2 MM, +/- 2 PPM. THE ORIGINAL FIELD NOTES ARE ARCHIVED IN SALEM AS BOOK #3697.

THE BASIS OF BEARING OF N 1°27'29" W COMES FROM TWO RIGHT OF WAY MONUMENTS AS RECORDED ON O.D.O.T. RIGHT OF WAY DRAWING NO. 8B-31-12. THE CALCULATED BEARING IS BETWEEN ENGLISH STATION 320+72.80 P.T., 40 FEET RIGHT (POINT #1) AND ENGLISH STATION 333+49.00 P.S., 22 FEET RIGHT (POINT #2). POINT #2 WAS HELD FOR COORDINATES. THE COORDINATES ALSO ARE TAKEN FROM DRAWING NO. 8B-31-12 WHICH ARE ON A LOCAL DATUM PLANE (LDP) BUT DERIVED FROM THE 1927 DATUM OF THE OREGON STATE PLANE COORDINATE SYSTEM, SOUTH ZONE. FOR CONVERSION PURPOSES ONE METER = 3937 U.S. FEET / 1200.

THE CONTROL NETWORK WAS ADJUSTED USING A LEAST SQUARES ROUTINE. THIS ADJUSTMENT PRODUCED ANGULAR AND DISTANCE RESIDUALS (THE AMOUNT THE FIELD OBSERVED MEASUREMENTS WERE CHANGED DUE TO THE ADJUSTMENT). 89% OF THE ANGULAR RESIDUALS WERE WITHIN 3 SECONDS AND TWO RESIDUALS WERE GREATER THAN 9 SECONDS PRIMARILY DUE TO HEAT WAVES. 99% OF THE DISTANCE RESIDUALS WERE WITHIN 5 MM AND 100% WERE WITHIN 6 MM. THERE IS A 95% PROBABILITY THAT THE FINAL POSITIONS OF THE NETWORK POINTS ARE WITHIN THE ERROR ELLIPSES AS SHOWN ON THE "CONFIDENCE LEVEL LIMITS" TABLE, SHEET 2 OF 16.



1 METER = 3937 U.S. FEET / 1200
TO CONVERT A METRIC DISTANCE DIVIDE BY 0.30480061

OREGON DEPARTMENT OF TRANSPORTATION
HORIZONTAL CONTROL
AND RECOVERY MAP
CANYONVILLE - AZALEA SECTION
INTERSTATE 5
DOUGLAS COUNTY
3500 STEWART PARKWAY, SUITE 140
ROSEBURG, OREGON 97470

OCTOBER 26, 2000
PROJECT KEY #10832

SHEET 1 OF 16

ST. HWY. 15-010A

MAP FILE M135-71 A

REGISTERED PROFESSIONAL LAND SURVEYOR
Christine V. Blawie
OREGON JULY 18, 1994
CHRISTINE V. BLAWIE 2889
EXPIRES: DEC. 31, 2001

MAP FILE M135-71 A