

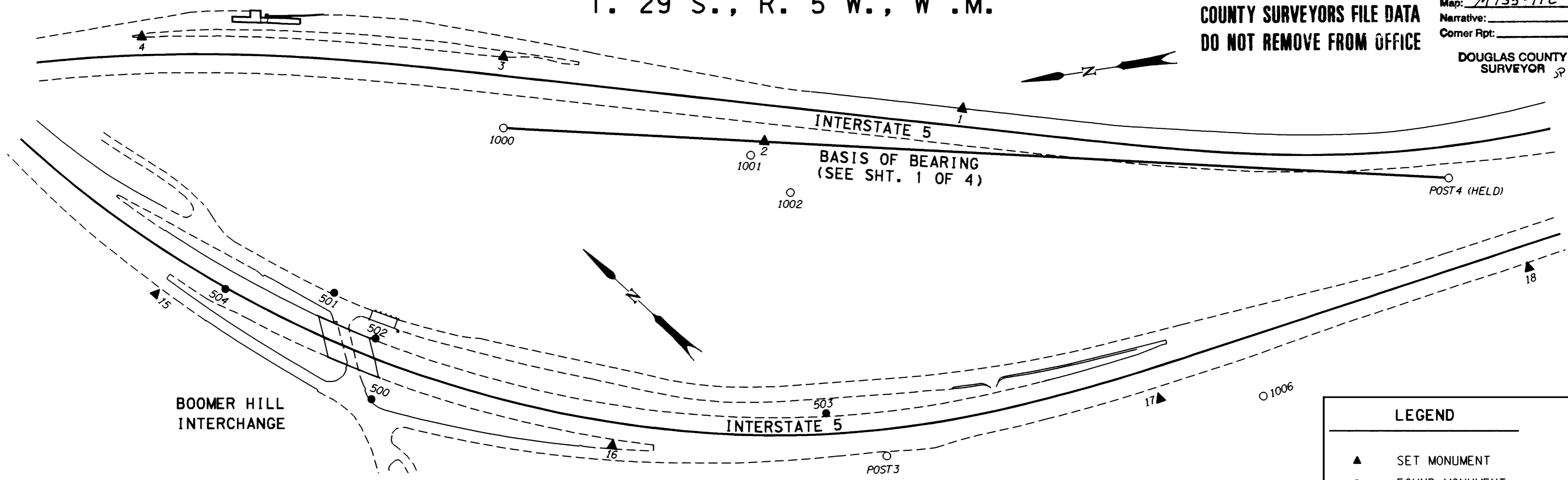
NE 1/4, SE 1/4 & SW 1/4 SEC. 18, AND NW 1/4, NE 1/4 & SE 1/4 SEC. 19,  
T. 29 S., R. 5 W., W.M.

FILED

Date: 6/22/2000 By: JP  
This survey consists of: 4 SHEETS  
Map: M135-11C  
Narrative:  
Corner Rpt:

COUNTY SURVEYORS FILE DATA  
DO NOT REMOVE FROM OFFICE

DOUGLAS COUNTY  
SURVEYOR JP



LEGEND

- ▲ SET MONUMENT
- FOUND MONUMENT
- SET AUX. MONUMENT
- - - EDGE OF PAVEMENT
- CONCRETE BARRIER
- CONCRETE CURB

REGISTERED  
PROFESSIONAL  
LAND SURVEYOR

*Christine Y. Blavin*  
OREGON  
JULY 18, 1984  
CHRISTINE Y. BLAVIN  
2000

EXPIRES: DEC. 31, 2001

SCALE 1:2000 METERS



1 METER = 3937 U.S. FEET / 1200  
TO CONVERT A METRIC DISTANCE DIVIDE BY 0.30480061

POINT ID	LDP NORTHING	LDP EASTING	DESCRIPTION
1	156859.029	378950.790	SET 16 mm X 762 mm IRON REBAR W/ A 38 mm BRASS CAP STAMPED "ODOT CONTROL 1".
2	156999.842	378949.755	SET 16 mm X 762 mm IRON REBAR W/ A 38 mm BRASS CAP STAMPED "ODOT CONTROL 2".
3	157170.931	379036.676	SET 16 mm X 762 mm IRON REBAR W/ A 38 mm BRASS CAP STAMPED "ODOT CONTROL 3".
4	157418.942	379090.469	SET 16 mm X 762 mm IRON REBAR W/ A 38 mm BRASS CAP STAMPED "ODOT CONTROL 4".
15	156351.241	378856.219	SET 16 mm X 762 mm IRON REBAR W/ A 38 mm BRASS CAP STAMPED "ODOT CONTROL 15".
16	156045.217	378996.348	SET 16 mm X 762 mm IRON REBAR W/ A 38 mm BRASS CAP STAMPED "ODOT CONTROL 16".
17	155787.674	379282.011	SET 16 mm X 762 mm IRON REBAR W/ A 38 mm BRASS CAP STAMPED "ODOT CONTROL 17".
18	155661.527	379525.691	SET 16 mm X 762 mm IRON REBAR W/ A 38 mm BRASS CAP STAMPED "ODOT CONTROL 18".
1000	157179.068	378986.438	FOUND 5/8" I. ROD WITH A 1 1/2" ALUM. CAP STAMPED "OREG. STATE HWY. DEPT." FLUSH WITH SURFACE IN GOOD CONDITION. A METAL WITNESS POST AND PADDLE BOARD NEARBY MARKED "EQ SHRW PT 3250+98.02 BK. POT 3251+28.31 AH. 125". ALSO HAS 4" X 4" WOOD POST NEARBY MARKED "SHRW 125 PT 3250+98.02 BK." STA. 3250+98.02 BK. = 3251+28.31 POT AH., 125 FT. RT. (R/W DRG. NO. 8B-29-20)
1001	157011.003	378940.494	FOUND 5/8" I. ROD 50 mm ABOVE SURFACE IN GOOD CONDITION. PADDLE BOARD NEARBY MARKED "SHRW POT 3257+00 125". STATION 3257+00, 125 FT. RT. (R/W DRG. *8B-29-20)
1002	156987.616	378910.426	FOUND 5/8" I. ROD W/ A 1 1/2" ALUM. CAP STAMPED "OREG. STATE HWY. DEPT." 20 mm ABOVE SURFACE IN GOOD CONDITION. PADDLE BOARD NEARBY MARKED "SHRW POT 3258+00 200" STATION 3258+00, 200 FT. RT. (R/W DRG. *8B-29-20)
1006	155735.043	379332.274	FOUND 5/8" I. ROD 70 mm ABOVE SURFACE IN GOOD CONDITION. PADDLE BOARD NEARBY MARKED "SHRW EQ. 3304+15.19 BK. = POT 3304+17.45 AH. 141" STATION 3304+15.19 P.T. BK. = 3304+17.45 P.O.T. AH., 140 FT. RT. (R/W DRG. *8B-29-20)
POST3	155899.185	379121.348	FOUND 2 3/4" BRASS DISK STAMPED "STATE HIGHWAY DEPARTMENT REFERENCE 865.58 POST" SET IN CONC. 200 mm BELOW SURFACE IN GOOD CONDITION. PADDLE BOARD NEARBY MARKED "SHRP P.O.S.T. 865.58 BK. OF P.T.". (R/W DRG. *8B-29-20)
POST4	156530.242	378848.602	FOUND 2 3/4" BRASS DISK STAMPED "STATE HIGHWAY DEPARTMENT POST 837.27 ELEVATION FEET BM NO.". DISK IS FLUSH WITH SURFACE IN GOOD CONDITION. A METAL POST IS NEARBY, NO PADDLE BOARD. POST STA. 3273+01.24. (R/W DRG. *8B-29-20)
500	156190.017	378903.994	SET 16 mm X 637 mm IRON REBAR W/ A 38 mm ALUM. CAP STAMPED "ODOT HORIZ. CONTROL 500".
501	156260.104	378940.911	SET 16 mm X 762 mm IRON REBAR W/ A 38 mm ALUM. CAP STAMPED "ODOT HORIZ. CONTROL 501".
502	156217.045	378937.128	SET 16 mm X 762 mm IRON REBAR W/ A 38 mm ALUM. CAP STAMPED "ODOT HORIZ. CONTROL 502".
503	155950.836	379114.190	SET 16 mm X 762 mm IRON REBAR W/ A 38 mm ALUM. CAP STAMPED "ODOT HORIZ. CONTROL 503".
504	156317.604	378890.832	SET PK NAIL AND SHINER.

OREGON DEPARTMENT OF TRANSPORTATION  
HORIZONTAL CONTROL  
AND RECOVERY MAP  
DILLARD JUNCTION - MYRTLE CREEK SECTION  
INTERSTATE 5  
DOUGLAS COUNTY  
3500 STEWART PARKWAY, SUITE 140  
ROSEBURG, OREGON 97470

JUNE 8, 2000  
PROJECT KEY \*09111

SHEET 3 OF 4

ST. HWY. 15-009C

MAP FILE M135-11C

MAP FILE M135-11C