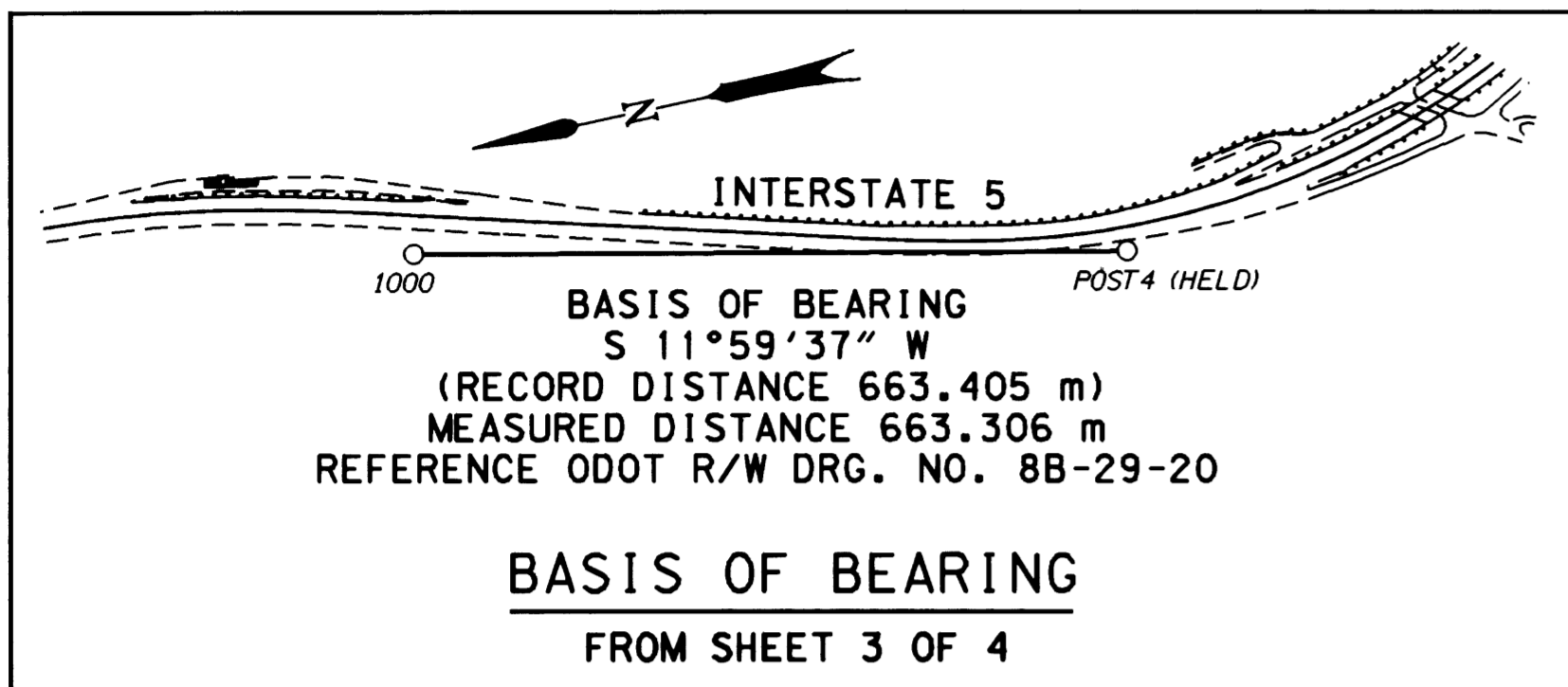


SEC. 12, T. 29 S., R. 6 W., AND  
SEC. 7, 18, 19, & 20, T. 29 S., R. 5 W., W .M.

COUNTY SURVEYORS FILE DATA  
DO NOT REMOVE FROM OFFICE

FILED  
Date: 6/22/2000 By: JP  
This survey consists of: 4 SHEETS  
Map: M135-11A  
Narrative: \_\_\_\_\_  
Corner Rpt: \_\_\_\_\_  
DOUGLAS COUNTY  
SURVEYOR JP



SURVEY NARRATIVE

THE PURPOSE OF THIS METRIC SURVEY WAS TO ESTABLISH HORIZONTAL CONTROL FOR THE OREGON DEPARTMENT OF TRANSPORTATION PROJECT CALLED "DILLARD JUNCTION - MYRTLE CREEK SECTION" ALONG INTERSTATE 5 BETWEEN MILE POINTS 109.0 AND 112.5. THE CONTROL NETWORK WAS CONDUCTED BY AN OREGON DEPARTMENT OF TRANSPORTATION (ODOT) SURVEY CREW IN ROSEBURG FROM AUGUST 5 TO AUGUST 12, 1999. THE ORIGINAL FIELD NOTES ARE ARCHIVED IN SALEM AS BOOK \*3696.

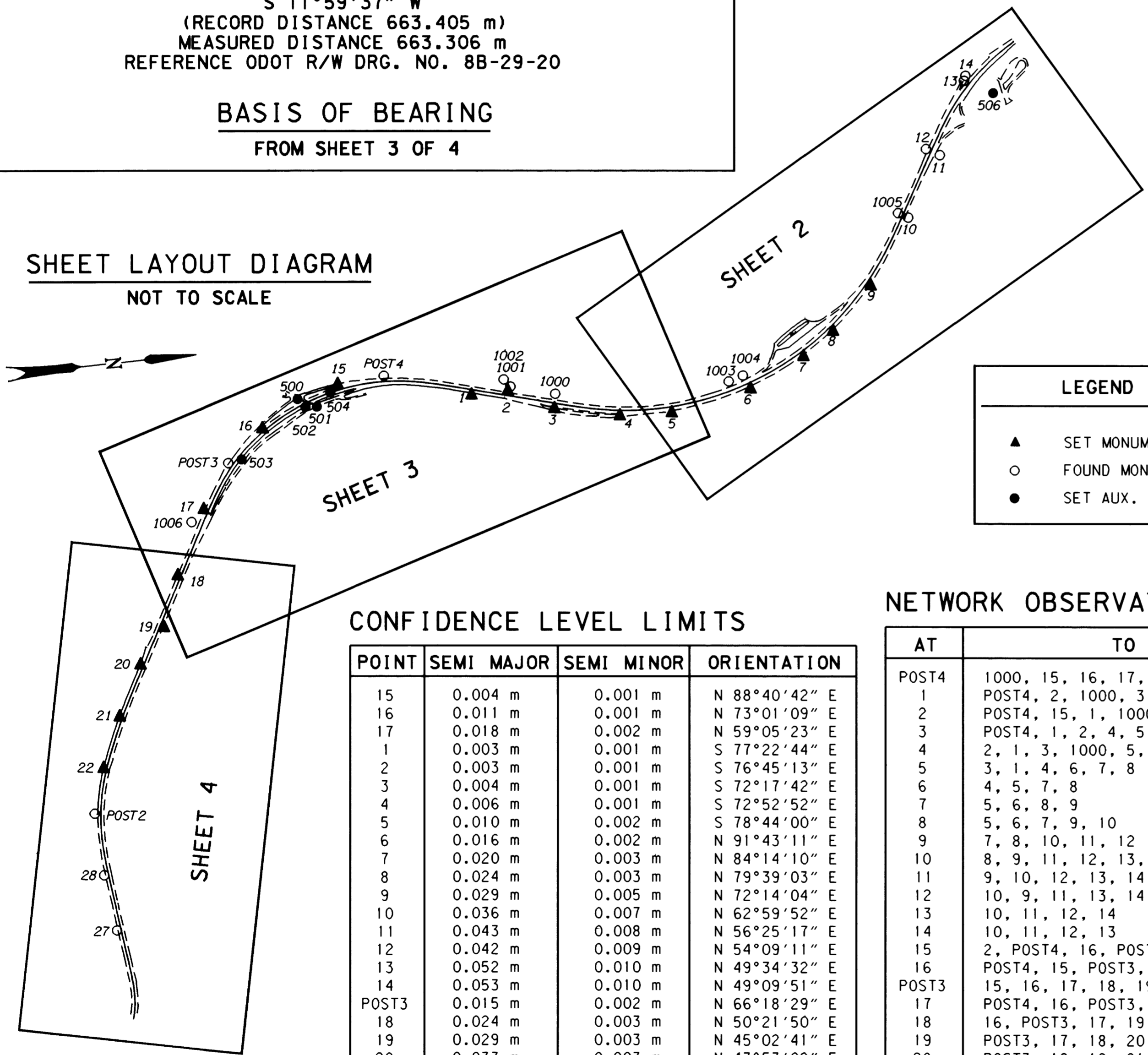
THE BASIS OF BEARING OF S 11°59'37" W WAS CALCULATED BETWEEN TWO FOUND MONUMENTS TAKEN FROM ODOT RIGHT OF WAY DRAWING NO. 8B-29-20. THESE TWO POINTS ARE "POST4" AND POINT NUMBER "1000"; RECORD DISTANCE BEING 2176.522 FEET (663.405 m) AND MEASURED DISTANCE BEING 663.306 m. "POST4" WAS HELD FOR COORDINATES AND THE RECORD BEARING BACK TO POINT "1000". COORDINATES FOR POINT "1000" WERE CALCULATED USING THE RECORD BEARING AND MEASURED DISTANCE FROM "POST4".

THE COORDINATES ARE ON A LOCAL DATUM PLANE (LDP) WHICH WAS DERIVED FROM THE 1927 SOUTH ZONE COORDINATE SYSTEM. LDP COORDINATES REPRESENT TRUE GROUND DISTANCES. TO CONVERT METRIC COORDINATES BACK TO ENGLISH DIVIDE BY 0.30480061 (1 m = 3937 US FEET / 1200).

A LEICA "TCA 1800" TOTAL STATION (SERIAL NUMBER 418939) WAS USED TO MAKE THE NETWORK OBSERVATIONS. THE LEICA "TCA 1800" HAS THE FOLLOWING PRECISION: STANDARD ANGULAR ERROR OF +/- 1 SECOND, AND A STANDARD DISTANCE ERROR OF +/- 2 mm, +/- 2 PPM.

THE NETWORK WAS ADJUSTED USING A LEAST SQUARES ROUTINE. THIS ADJUSTMENT PRODUCED ANGULAR AND DISTANCE RESIDUALS (THE AMOUNT THE FIELD OBSERVED MEASUREMENTS WERE CHANGED DUE TO THE ADJUSTMENT). 96% OF THE ANGULAR RESIDUALS WERE WITHIN THE 3 SECOND STANDARD, AND 100% OF THEM WERE WITHIN 7 SECONDS. 100% OF THE DISTANCE RESIDUALS WERE WITHIN THE 5 mm STANDARD. THERE IS A 95% PROBABILITY THAT THE FINAL POSITIONS OF THE NETWORK POINTS ARE WITHIN THE ERROR ELLIPSES AS SHOWN ON THE "CONFIDENCE LEVEL LIMITS" TABLE ON THIS SHEET.

SHEET LAYOUT DIAGRAM  
NOT TO SCALE



LEGEND

- ▲ SET MONUMENT
- FOUND MONUMENT
- SET AUX. MONUMENT

CONFIDENCE LEVEL LIMITS

POINT	SEMI MAJOR	SEMI MINOR	ORIENTATION
15	0.004 m	0.001 m	N 88°40'42" E
16	0.011 m	0.001 m	N 73°01'09" E
17	0.018 m	0.002 m	N 59°05'23" E
1	0.003 m	0.001 m	S 77°22'44" E
2	0.003 m	0.001 m	S 76°45'13" E
3	0.004 m	0.001 m	S 72°17'42" E
4	0.006 m	0.001 m	S 72°52'52" E
5	0.010 m	0.002 m	S 78°44'00" E
6	0.016 m	0.002 m	N 91°43'11" E
7	0.020 m	0.003 m	N 84°14'10" E
8	0.024 m	0.003 m	N 79°39'03" E
9	0.029 m	0.005 m	N 72°14'04" E
10	0.036 m	0.007 m	N 62°59'52" E
11	0.043 m	0.008 m	N 56°25'17" E
12	0.042 m	0.009 m	N 54°09'11" E
13	0.052 m	0.010 m	N 49°34'32" E
14	0.053 m	0.010 m	N 49°09'51" E
POST3	0.015 m	0.002 m	N 66°18'29" E
18	0.024 m	0.003 m	N 50°21'50" E
19	0.029 m	0.003 m	N 45°02'41" E
20	0.033 m	0.003 m	N 43°53'02" E
21	0.039 m	0.004 m	N 41°23'05" E
22	0.044 m	0.004 m	N 38°58'42" E
POST2	0.049 m	0.005 m	N 36°34'54" E
28	0.054 m	0.006 m	N 31°42'40" E
27	0.059 m	0.008 m	N 27°20'32" E

NETWORK OBSERVATIONS

AT	TO
POST4	1000, 15, 16, 17, 1, 2, 3
1	POST4, 2, 1000, 3, 4
2	POST4, 15, 1, 1000, 3, 4
3	POST4, 1, 2, 4, 5
4	2, 1, 3, 1000, 5, 6
5	3, 1, 4, 6, 7, 8
6	4, 5, 7, 8
7	5, 6, 8, 9
8	5, 6, 7, 9, 10
9	7, 8, 10, 11, 12
10	8, 9, 11, 12, 13, 14
11	9, 10, 12, 13, 14
12	10, 9, 11, 13, 14
13	10, 11, 12, 14
14	10, 11, 12, 13
15	2, POST4, 16, POST3
16	POST4, 15, POST3, 17, 18
POST3	15, 16, 17, 18, 19, 20, 21
17	POST4, 16, POST3, 18, 19, 22
18	16, POST3, 17, 19, 20, 21, 22
19	POST3, 17, 18, 20, 21
20	POST3, 18, 19, 21, 22, POST2
21	POST3, 18, 19, 20, 22, POST2
22	17, 18, 20, 21, POST2, 28
POST2	20, 21, 22, 28, 27
28	22, POST2, 27
27	POST2, 28

SURVEY  
1 METER = 3937 U.S. FEET / 1200  
TO CONVERT A METRIC DISTANCE DIVIDE BY 0.30480061

REGISTERED  
PROFESSIONAL  
LAND SURVEYOR  
*Christine V. Blevis*  
OREGON  
JULY 19, 1994  
CHRISTINE V. BLEVIS  
2000  
EXPIRES: DEC. 31, 2001

OREGON DEPARTMENT OF TRANSPORTATION  
HORIZONTAL CONTROL  
AND RECOVERY MAP  
DILLARD JUNCTION - MYRTLE CREEK SECTION  
INTERSTATE 5  
DOUGLAS COUNTY  
3500 STEWART PARKWAY, SUITE 140  
ROSEBURG, OREGON 97470

JUNE 8, 2000  
PROJECT KEY \*09111  
SHEET 1 OF 4

MAP FILE M135-11A

MAP FILE M135-11A