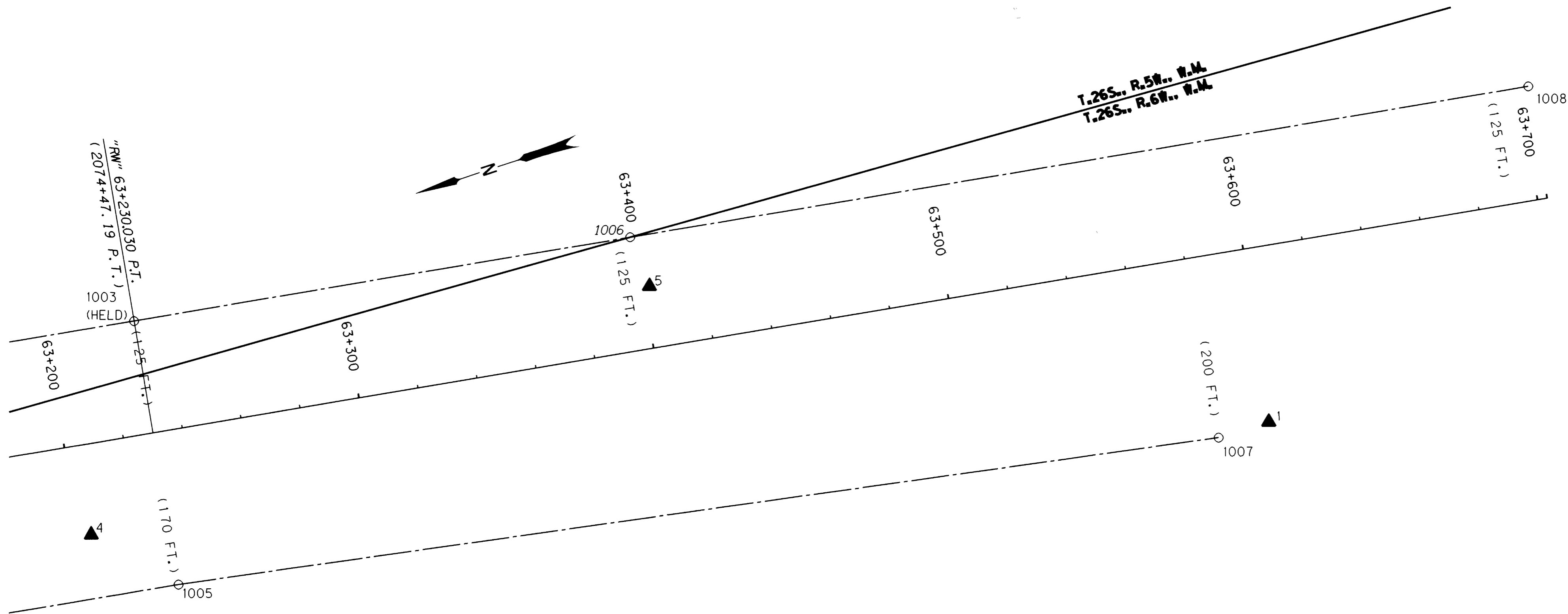


N. W. 1/4 SEC. 18 T. 26 S. R. 5 W., W. M.  
 N. E. 1/4 SEC. 13 T. 26 S. R. 6 W., W. M.

COUNTY SURVEYORS FILE DATA  
 DO NOT REMOVE FROM OFFICE

FILED  
 Date: 5/30/2000 By: JP  
 This survey consists of:  
 Map: M134-74E  
 Narrative:  
 Corner Rpt:  
 DOUGLAS COUNTY  
 SURVEYOR R



RECOVERED MONUMENT LIST

PT. #	LDP NORTHING	LDP EASTING	STATION	OFFSET	DATE	DESCRIPTION
1003	187018.800	378814.755	63+230.030	38.076 m LT.	07-19-99	FND. 5/8" I. ROD 30 mm ABOVE SURFACE, GOOD COND. (P.T. 2074+47.19, 125' LT.)
1005	187031.837	378725.837	63+230.043	51.792 m RT.	07-19-99	FND. 5/8" I. ROD 200 mm ABOVE SURFACE, GOOD COND. (P.T. 2074+47.19, 170' RT.)
1006	186852.195	378790.300	63+398.419	38.075 m LT.	07-19-99	FND. 5/8" I. ROD 120 mm ABOVE SURFACE, GOOD COND. (P.C.S. 2080+00, 125' LT.)
1007	186685.563	378665.778	63+581.369	60.930 m RT.	07-19-99	FND. 5/8" I. ROD 60 mm ABOVE SURFACE, GOOD COND. (2086+00, 200' RT.)
1008	186550.649	378746.043	63+703.198	38.078 m LT.	07-19-99	FND. 5/8" I. ROD 100 mm ABOVE SURFACE, GOOD COND. (2090+00, 125' LT.)

LEGEND	
( )	RECORD DATA PER DRG 8B-26-7
○	FOUND MONUMENT NOTED IN LIST
▲	SET NETWORK POINT
—	RIGHT-OF-WAY

REGISTERED PROFESSIONAL LAND SURVEYOR  
*Christine V. Blewins*  
 OREGON JULY 19, 1994  
 CHRISTINE V. BLEWINS  
 2669

Expires : Dec. 31, 2001



SCALE 1:1000  
 20 10 0 20 40 60 80 100  
 METERS  
 TO CONVERT METERS TO FEET DIVIDE BY 0.30480061  
 (1 METER = 3937 U.S. SURVEY FEET/1200)

OREGON DEPARTMENT OF TRANSPORTATION

HORIZONTAL CONTROL, RECOVERY AND RETRACEMENT MAP

SUTHERLIN CR. - WILBUR RD. ROCKFALL

PACIFIC HWY (I-5)

DOUGLAS COUNTY

O.D.O.T. 3500 N.W. STEWART PARKWAY, ROSEBURG, OR. 97470

MAY 17, 2000

SHEET 5 OF 5

ST. HWY. 15-007E

MAP FILE M134-74E

MAP FILE M134-74E