

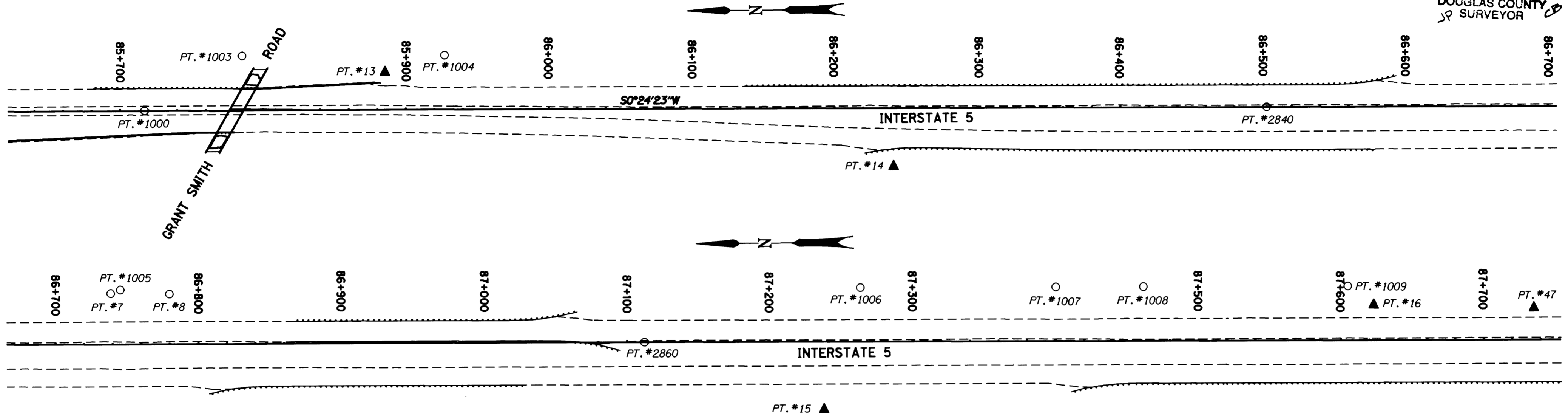
COUNTY SURVEYORS FILE DATA
DO NOT REMOVE FROM OFFICE

SE 1/4 SEC. 11, SW 1/4 SEC. 12, NW 1/4 & SW 1/4 SEC. 13,
AND NE 1/4 & SE 1/4 SEC. 14, T. 28 S., R. 6 W., W.M.

FILED

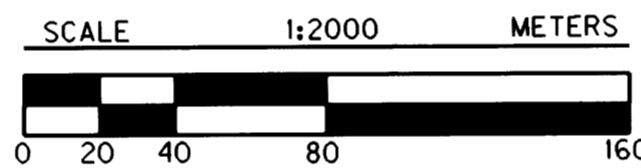
Date: 12/21/1999 By: JP
This survey consists of: 12 SHEETS
Map: M/133-75 L
Narrative:
Corner Rpt:

DOUGLAS COUNTY
SURVEYOR

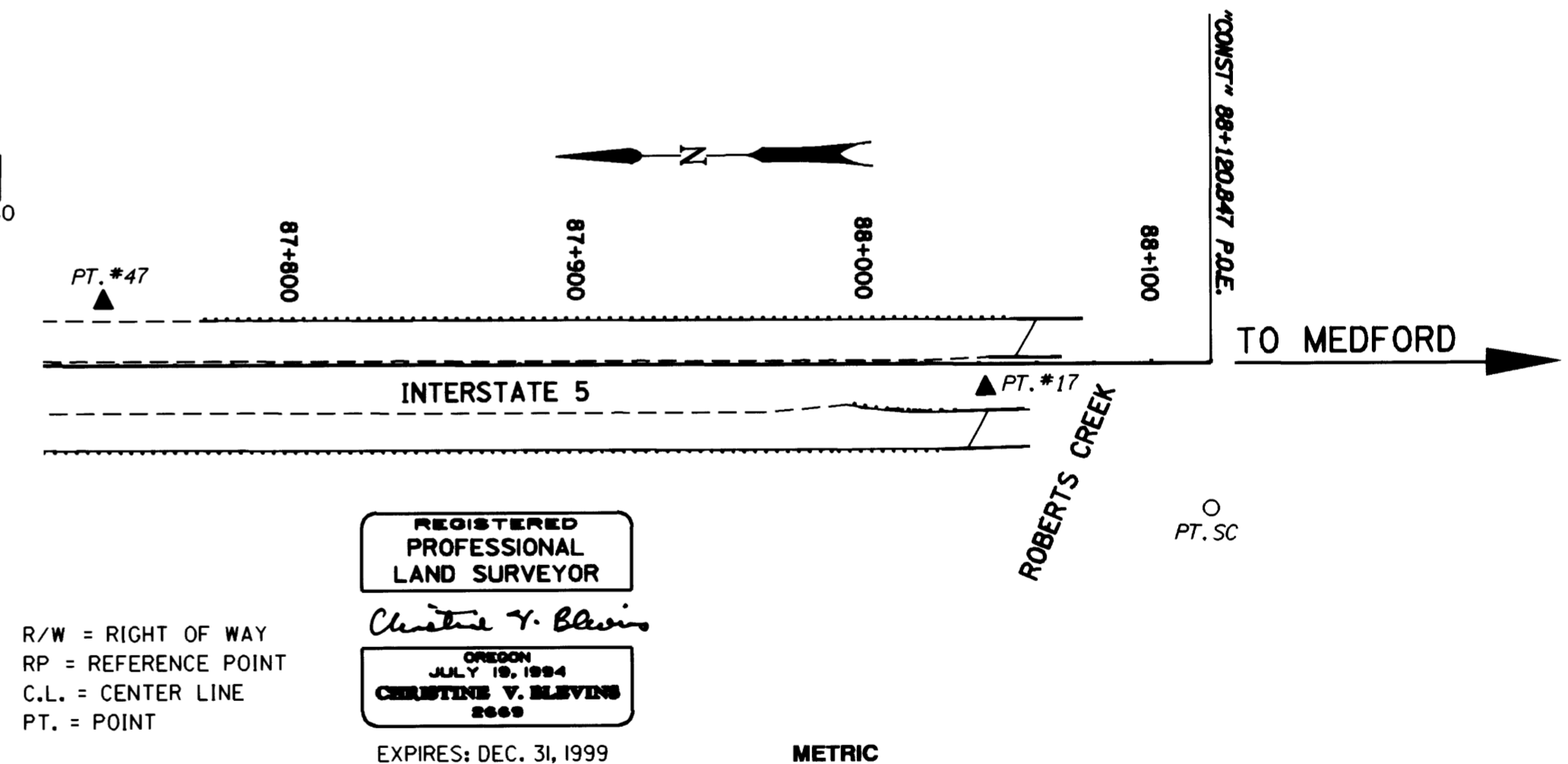


CONTROL NETWORK AND FOUND MONUMENTS

POINT	NORTHING	EASTING	DESCRIPTION
7	167626.472	376797.962	FOUND 13 MM SQ. IRON ROD WITH 38 MM ALUM. CAP STAMPED "ODOT HORIZ. CONTROL 7", FLUSH WITH SURFACE IN GOOD CONDITION.
8	167585.327	376797.202	FOUND 13 MM SQ. IRON ROD WITH 38 MM ALUM. CAP STAMPED "ODOT HORIZ. CONTROL 8", FLUSH WITH SURFACE IN GOOD CONDITION.
13	168479.748	376795.922	SET 16 MM X 762 MM IRON REBAR WITH 38 MM BRASS CAP STAMPED "ODOT CONTROL 13".
14	168124.549	376726.141	SET 16 MM X 762 MM IRON REBAR WITH 38 MM BRASS CAP STAMPED "ODOT CONTROL 14".
15	167128.050	376712.319	SET 16 MM X 762 MM IRON REBAR WITH 38 MM BRASS CAP STAMPED "ODOT CONTROL 15", FLUSH WITH SURFACE.
16	166742.375	376781.803	SET 16 MM X 762 MM IRON REBAR WITH 38 MM BRASS CAP STAMPED "ODOT CONTROL 16".
17	166323.241	376745.788	SET 16 MM X 762 MM IRON REBAR WITH 38 MM BRASS CAP STAMPED "ODOT CONTROL 17".
47	166630.133	376778.671	SET 16 MM X 762 MM IRON REBAR WITH 38 MM BRASS CAP STAMPED "ODOT CONTROL 47".
2840	167862.985	376764.092	FOUND 1 1/2" (38 MM) ALUM. CAP STAMPED "OREG. STATE HWY. DIV." FLUSH WITH SURFACE. STA. 2840+00 P.O.T., AT C.L.
2860	167253.225	376759.695	FOUND 1 1/2" (38 MM) ALUM. CAP STAMPED "OREG. STATE HWY. DIV." STA. 2860+00, AT C.L.
SC	166245.114	376701.887	FOUND 5/8" (16 MM) IRON ROD AT SECTION CORNER SET 35 MM ABOVE 485 MM X 435 MM CONC. SLAB. (TWO BEARING TREES VISIBLE, SECTION CORNER COMMON TO SECTIONS 13, 14, 23, AND 24)
1000	168648.314	376769.681	FOUND 1 1/2" (38 MM) ALUM. CAP STAMPED "OREG. STATE HWY. DIV." FLUSH WITH SURFACE IN GOOD CONDITION. EQ. STA. 2813+85.47 BK = 2814+23.72 P.O.T. AH., AT C.L.
1003	168579.658	376807.342	FOUND 5/8" (16 MM) IRON ROD FLUSH WITH SURFACE IN GOOD CONDITION. R/W ANGLE POINT, 125 FT. LT.



LEGEND	
▲	SET MONUMENT
○	FOUND MONUMENT
●	SET AUX. MONUMENT
—	CONCRETE BARRIER
—	CURB
- - -	EDGE OF PAVEMENT
—	FENCE
- - -	GUARDRAIL



POINT	NORTHING	EASTING	DESCRIPTION
1004	168437.992	376806.320	FOUND 5/8" (16 MM) IRON ROD FLUSH WITH SURFACE IN GOOD CONDITION. R/W STA. 2822+00, 125 FT. LT.
1005	167619.721	376800.360	FOUND 5/8" (16 MM) IRON ROD SET IN 200 MM X 200 MM CONC. POST, 65 MM ABOVE CONC. IN GOOD CONDITION.
1006	167101.828	376796.451	FOUND 5/8" (16 MM) IRON ROD SET IN 200 MM X 200 MM CONC. POST, 65 MM ABOVE CONC. IN GOOD CONDITION. STA. 2865+00, 125 FT. LT.
1007	166965.090	376795.526	FOUND 5/8" (16 MM) IRON ROD 100 MM ABOVE SURFACE IN GOOD CONDITION. R/W STA. 2869+50, 125 FT. LT.
1008	166903.719	376795.158	FOUND 5/8" (16 MM) IRON ROD 50 MM ABOVE SURFACE IN GOOD CONDITION. R/W STA. 2871+50, 125 FT. LT.
1009	166760.466	376794.163	FOUND 5/8" (16 MM) IRON ROD 20 MM ABOVE SURFACE IN GOOD CONDITION. R/W 125 FT. LT.

METRIC SURVEY
1 METER = 3937 U.S. FEET / 1200
TO CONVERT A METRIC DISTANCE DIVIDE BY 0.30480061

OREGON DEPARTMENT OF TRANSPORTATION
HORIZONTAL CONTROL
AND RECOVERY MAP

GARDEN VALLEY - ROBERTS CREEK SEC.
INTERSTATE 5

3500 STEWART PARKWAY, SUITE 140
ROSEBURG, OREGON 97470

PROJECT KEY *09108

SHEET 12 OF 12

ST. HWY. 15-006L

MAP FILE M/133-75 L

MAP FILE M/133-75 L