

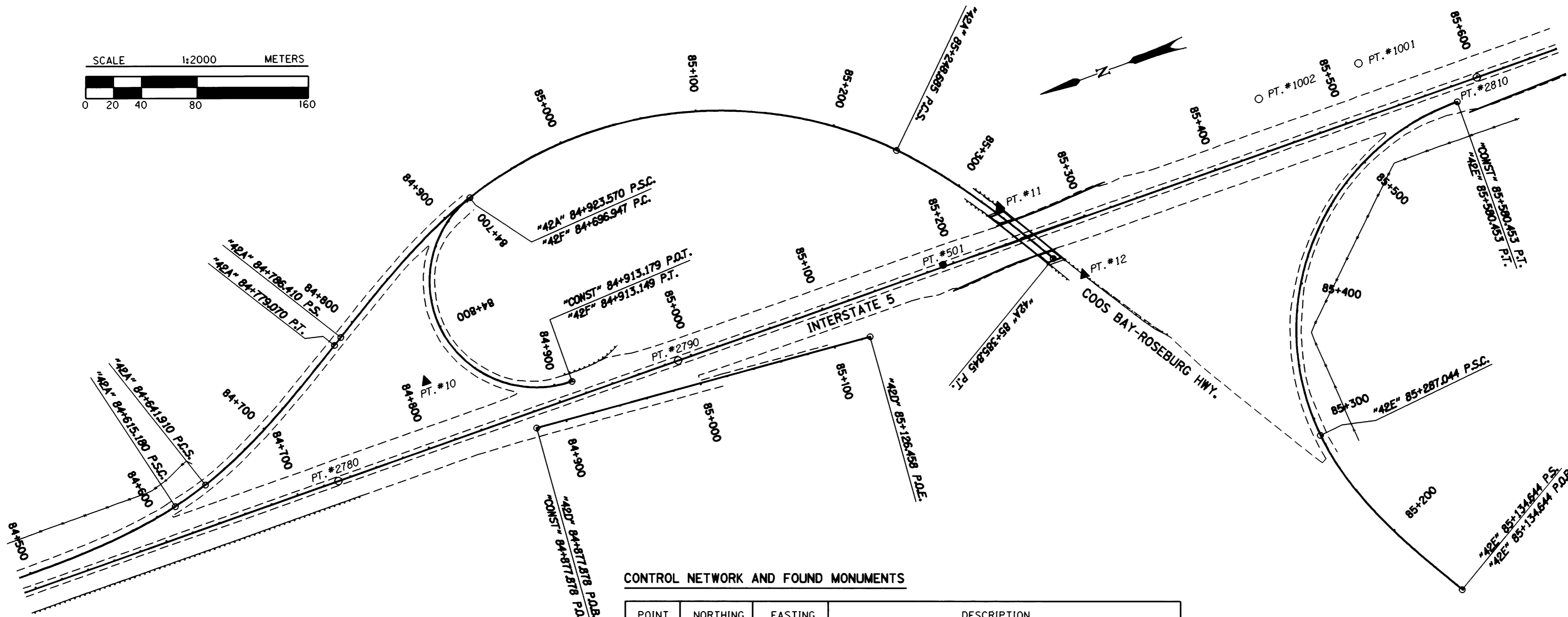
COUNTY SURVEYORS FILE DATA
DO NOT REMOVE FROM OFFICE

SE 1/4 SEC. 2, SW 1/4 SEC. 1, NE 1/4 SEC. 11, &
NW 1/4 SEC. 12, T. 28 S., R. 6 W., W.M.

FILED

Date: 12-21-1999 By: JP
This survey consists of: 12 SHEETS
Map: M133-75 K
Narrative: _____
Corner Rpt: _____

DOUGLAS COUNTY
SURVEYOR



R/W = RIGHT OF WAY
RP = REFERENCE POINT
C.L. = CENTER LINE
PT. = POINT

LEGEND	
▲	SET MONUMENT
○	FOUND MONUMENT
●	SET AUX. MONUMENT
—	CONCRETE BARRIER
—	CURB
- - -	EDGE OF PAVEMENT
—	FENCE
- - -	GUARDRAIL

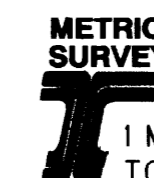
REGISTERED
PROFESSIONAL
LAND SURVEYOR

Christine V. Blum
OREGON
JULY 19, 1994
CHRISTINE V. BLUM
2000

EXPIRES: DEC. 31, 1999

CONTROL NETWORK AND FOUND MONUMENTS

POINT	NORTHING	EASTING	DESCRIPTION
10	169550.969	376823.713	SET 16 MM X 762 MM IRON REBAR WITH 38 MM BRASS CAP STAMPED "ODOT CONTROL 10" FLUSH WITH SURFACE.
11	169120.624	376801.060	SET 16 MM X 762 MM IRON REBAR WITH 38 MM BRASS CAP STAMPED "ODOT CONTROL 11" FLUSH WITH SURFACE.
12	169079.946	376734.767	SET 16 MM X 762 MM IRON REBAR WITH 38 MM BRASS CAP STAMPED "ODOT CONTROL 12" FLUSH WITH SURFACE.
2780	169634.547	376776.597	FOUND 1 1/2" (38 MM) ALUM. CAP STAMPED "OREG. STATE HWY. DIV." 200 MM BELOW SURFACE IN GOOD CONDITION. STA. 2780+00 P.O.T., AT C.L.
2810	168765.837	376770.444	FOUND 1 1/2" (38 MM) ALUM. CAP STAMPED "OREG. STATE HWY. DIV." 100 MM BELOW SURFACE IN GOOD CONDITION. STA. 2810+00 P.O.T., AT C.L.
2790	169375.478	376774.715	FOUND 1 1/2" (38 MM) ALUM. CAP STAMPED "OREG. STATE HWY. DIV." 100 MM BELOW SURFACE IN GOOD CONDITION. STA. 2790+00 P.O.T., AT C.L.
501	169173.100	376774.504	SET 13 MM X 762 MM SQ. IRON ROD WITH 38 MM ALUM. CAP STAMPED "ODOT HORIZ. CONTROL 501"
1001	168842.405	376809.115	FOUND 5/8" (16 MM) IRON ROD SET IN CONC. POST SUPPORT 20 MM ABOVE SURFACE IN FAIR CONDITION. R/W STA. 2807+50, 125 FT. LT.
1002	168918.553	376809.626	FOUND 5/8" (16 MM) IRON ROD 120 MM ABOVE SURFACE IN GOOD CONDITION. R/W STA. 2805+00, 125 FT. LT.



1 METER = 3937 U.S. FEET / 1200
TO CONVERT A METRIC DISTANCE DIVIDE BY 0.30480061

OREGON DEPARTMENT OF TRANSPORTATION

HORIZONTAL CONTROL
AND RECOVERY MAP

GARDEN VALLEY - ROBERTS CREEK SEC.
INTERSTATE 5

3500 STEWART PARKWAY, SUITE 140
ROSEBURG, OREGON 97470

PROJECT KEY *09108

SHEET 11 OF 12

ST. HWY. 15-006K

MAP FILE M133-75 K