

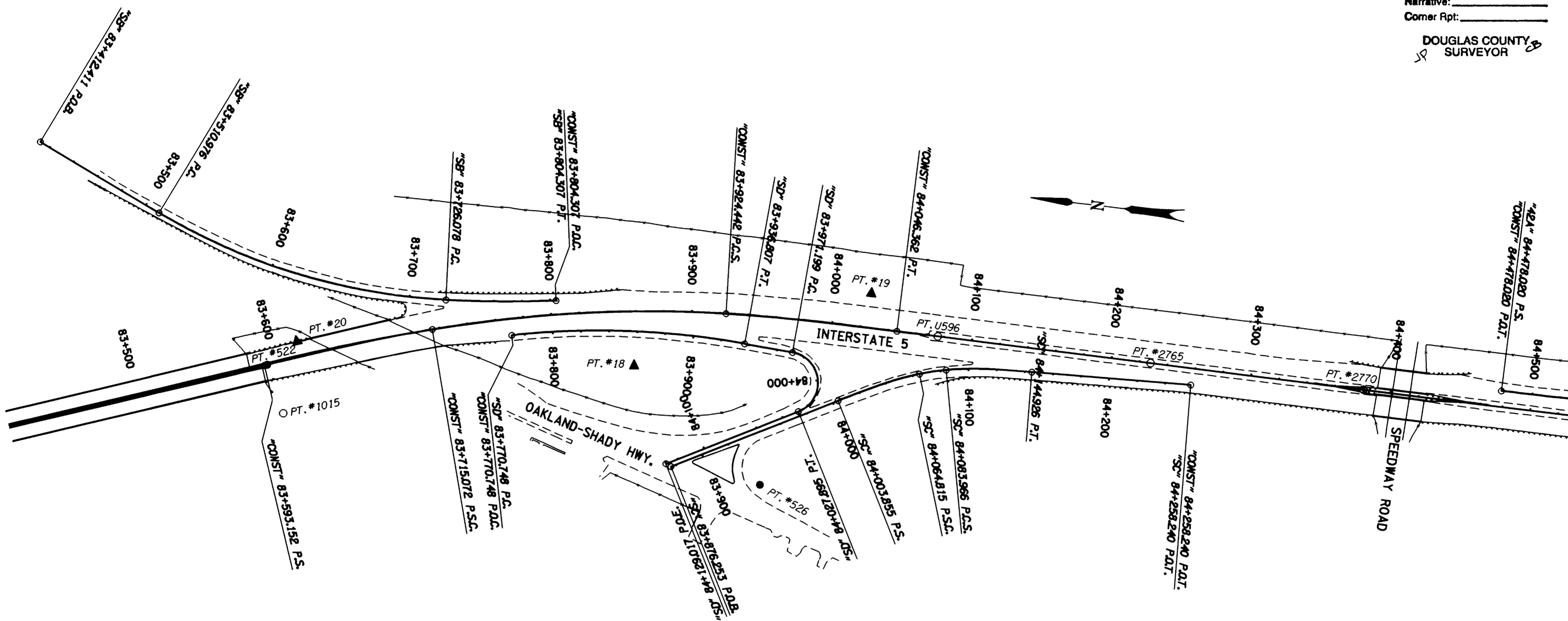
COUNTY SURVEYORS FILE DATA
DO NOT REMOVE FROM OFFICE

NE 1/4 & SE 1/4 SEC. 2, T. 28 S., R. 6 W., W.M.

FILED

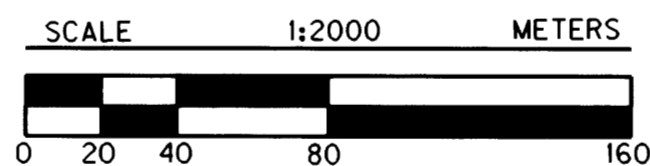
Date: 12/21/1997 By: JP
This survey consists of: 12 SHEETS
Map: M133-75J
Narrative: _____
Corner Rpt: _____

DOUGLAS COUNTY
SURVEYOR



CONTROL NETWORK AND FOUND MONUMENTS

| POINT | NORTHING | EASTING | DESCRIPTION |
|-------|------------|------------|---|
| 18 | 170501.671 | 376736.280 | SET 16 MM X 762 MM IRON REBAR WITH 38 MM BRASS CAP STAMPED "ODOT CONTROL 18" FLUSH WITH SURFACE. |
| 19 | 170340.302 | 376807.081 | SET 16 MM X 762 MM IRON REBAR WITH 38 MM BRASS CAP STAMPED "ODOT CONTROL 19" FLUSH WITH SURFACE. |
| 20 | 170741.565 | 376725.392 | SET 16 MM X 762 MM IRON REBAR WITH 38 MM BRASS CAP STAMPED "ODOT CONTROL 20". |
| 2765 | 170137.573 | 376780.171 | FOUND 5/8" (16 MM) IRON REBAR SET IN CONC. 450 MM BELOW SURFACE IN GOOD CONDITION. STA. 2765+00, AT C.L. |
| 2770 | 169985.101 | 376779.087 | FOUND 5/8" (16 MM) IRON REBAR WITH A 1 1/2" (38 MM) ALUM. CAP STAMPED "OREG. STATE HWY. DIV." FLUSH WITH SURFACE IN GOOD CONDITION. STA. 2770+00.00 P.O.T., AT C.L. |
| U596 | 170289.889 | 376781.229 | FOUND BRASS DISK SET IN CONC. STAMPED "STATE HIGHWAY DEPARTMENT REFERENCE U596 1965" 900 MM BELOW SURFACE IN GOOD CONDITION. STA. 2760+00, AT C.L. |
| 1015 | 170744.965 | 376672.435 | FOUND 1/2" (13 MM) IRON ROD 65 MM ABOVE SURFACE IN GOOD CONDITION. R/W STA. 2744+32.00 P.S., 125 FT. RT. |
| 522 | 170760.380 | 376705.407 | SET PK NAIL AND SHINER. |
| 526 | 170403.045 | 376661.093 | SET 16 MM X 762 MM IRON REBAR WITH A 38 MM ALUM. CAP STAMPED "ODOT HORIZ. CONTROL 526" FLUSH WITH SURFACE. |



| LEGEND | |
|--------|-------------------|
| ▲ | SET MONUMENT |
| ○ | FOUND MONUMENT |
| ● | SET AUX. MONUMENT |
| — | CONCRETE BARRIER |
| — | CURB |
| - - - | EDGE OF PAVEMENT |
| —+— | FENCE |
| — — | GUARDRAIL |

R/W = RIGHT OF WAY
RP = REFERENCE POINT
C.L. = CENTER LINE
PT. = POINT

REGISTERED
PROFESSIONAL
LAND SURVEYOR

Christine Y. Blewin

OREGON
JULY 18, 1994
CHRISTINE Y. BLEWIN
2000

EXPIRES: DEC. 31, 1999



1 METER = 3937 U.S. FEET / 1200
TO CONVERT A METRIC DISTANCE DIVIDE BY 0.30480061

OREGON DEPARTMENT OF TRANSPORTATION

HORIZONTAL CONTROL
AND RECOVERY MAP

GARDEN VALLEY - ROBERTS CREEK SEC.
INTERSTATE 5

3500 STEWART PARKWAY, SUITE 140
ROSEBURG, OREGON 97470

PROJECT KEY #09108

SHEET 10 OF 12

ST. HWY. 15-006J

MAP FILE M133-75J