

COUNTY SURVEYORS FILE DATA
DO NOT REMOVE FROM OFFICE

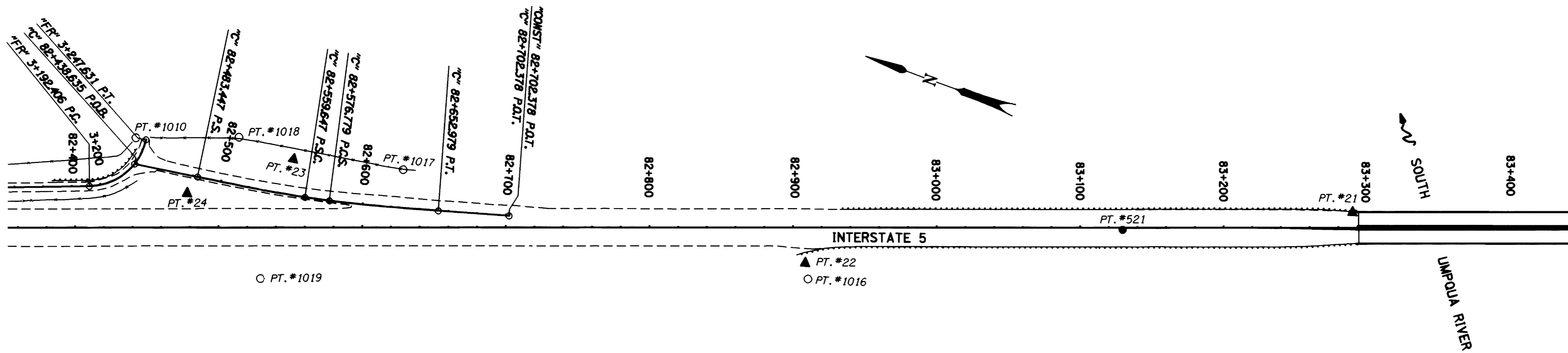
SE 1/4 SEC. 35, T. 27 S., R. 6 W. AND
NE 1/4 SEC. 2, T. 28 S., R. 6 W., W.M.

FILED

Date: 12/21/1999 By: JP
This survey consists of: 12 SHEETS
Map: M133-751
Narrative: _____
Corner Rpt: _____

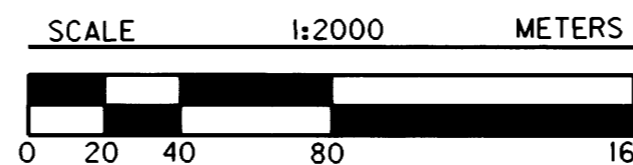
DOUGLAS COUNTY
SURVEYOR

MAP FILE M133-751



CONTROL NETWORK AND FOUND MONUMENTS

POINT	NORTHING	EASTING	DESCRIPTION
21	171051.108	376611.971	SET 16 MM X 762 MM IRON REBAR WITH 38 MM BRASS CAP STAMPED "ODOT CONTROL 21".
22	171397.049	376447.478	SET 16 MM X 762 MM IRON REBAR WITH 38 MM BRASS CAP STAMPED "ODOT CONTROL 22".
23	171756.566	376393.617	SET 16 MM X 762 MM IRON REBAR WITH 38 MM BRASS CAP STAMPED "ODOT CONTROL 23", 90 MM ABOVE SURFACE.
24	171818.077	376345.896	SET 16 MM X 762 MM IRON REBAR WITH 38 MM BRASS CAP STAMPED "ODOT CONTROL 24".
1010	171864.651	376369.128	FOUND 5/8" (16 MM) IRON REBAR 100 MM ABOVE SURFACE IN GOOD CONDITION. R/W STA. 2706+40, 200 FT. LT.
1016	171391.145	376436.553	FOUND 5/8" (16 MM) IRON ROD FLUSH WITH SURFACE IN GOOD CONDITION. R/W STA. 2721+75, 125 FT. RT.
1017	171682.130	376411.777	FOUND 5/8" (16 MM) IRON ROD 60 MM ABOVE SURFACE IN GOOD CONDITION. R/W STA. 2712+50, 125 FT. LT.
1018	171797.322	376393.986	FOUND 5/8" (16 MM) IRON ROD 170 MM ABOVE SURFACE IN GOOD CONDITION. R/W STA. 2708+75, 200 FT. LT.
1019	171749.317	376306.063	FOUND 5/8" (16 MM) IRON ROD 160 MM ABOVE SURFACE IN GOOD CONDITION. R/W STA. 2709+25, 125 FT. RT.
521	171197.126	376544.307	SET PK NAIL AND SHINER.



LEGEND	
▲	SET MONUMENT
○	FOUND MONUMENT
●	SET AUX. MONUMENT
—	CONCRETE BARRIER
—	CURB
- - -	EDGE OF PAVEMENT
—+—	FENCE
- - -	GUARDRAIL

R/W = RIGHT OF WAY
RP = REFERENCE POINT
C.L. = CENTER LINE
PT. = POINT

REGISTERED
PROFESSIONAL
LAND SURVEYOR

Christine V. Blavin

OREGON
JULY 18, 1994
CHRISTINE V. BLAVIN
2669

EXPIRES: DEC. 31, 1999



1 METER = 3937 U.S. FEET / 1200
TO CONVERT A METRIC DISTANCE DIVIDE BY 0.30480061

OREGON DEPARTMENT OF TRANSPORTATION

HORIZONTAL CONTROL
AND RECOVERY MAP

GARDEN VALLEY - ROBERTS CREEK SEC.
INTERSTATE 5

3500 STEWART PARKWAY, SUITE 140
ROSEBURG, OREGON 97470

PROJECT KEY #09108

SHEET 9 OF 12

ST. HWY. 15-0061

MAP FILE M133-751