

COUNTY SURVEYORS FILE DATA
DO NOT REMOVE FROM OFFICE

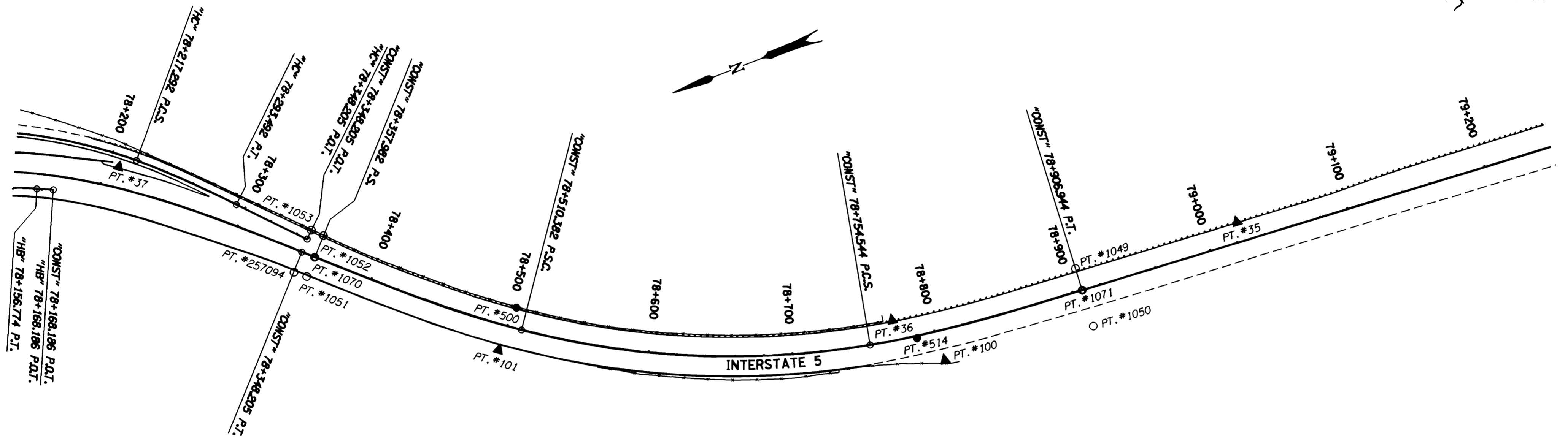
NE 1/4, NW 1/4 & SW 1/4 SEC. 24, T. 27 S., R. 6 W., W.M.

FILED

Date: 12/21/1999 By: JP
This survey consists of: 12 Sheets
Map: M133-75 E
Narrative: _____
Comer Rpt: _____

DOUGLAS COUNTY
SURVEYOR

MAP FILE M133-75 E

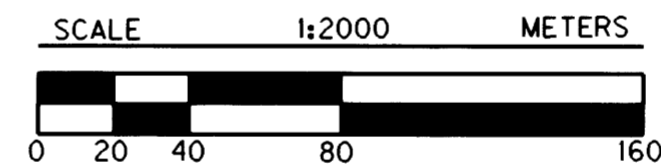


CONTROL NETWORK AND FOUND MONUMENTS

POINT	NORTHING	EASTING	DESCRIPTION
35	174773.943	377465.292	SET 16 MM X 762 MM IRON REBAR WITH 38 MM BRASS CAP STAMPED "ODOT CONTROL 35".
36	175022.166	377489.090	SET 16 MM X 762 MM IRON REBAR WITH 38 MM BRASS CAP STAMPED "ODOT CONTROL 36".
37	175482.692	377785.033	SET 16 MM X 762 MM IRON REBAR WITH 38 MM BRASS CAP STAMPED "ODOT CONTROL 37".
100	174998.198	377449.801	SET 16 MM X 762 MM IRON REBAR WITH 38 MM BRASS CAP STAMPED "ODOT CONTROL 100".
101	175283.919	377569.336	SET 16 MM X 762 MM IRON REBAR WITH 38 MM BRASS CAP STAMPED "ODOT CONTROL 101".
257094	175396.980	377670.719	FOUND 5/8" (16 MM) IRON ROD WITH 1 1/2" (38 MM) ALUM. CAP STAMPED "OREG. STATE HWY. DIV." 100 MM ABOVE SURFACE IN GOOD CONDITION. RP STA. 2570+93.99 P.T., 49.81 FT. RT.
1049	174890.512	377475.058	FOUND 5/8" (16 MM) IRON REBAR WITH 1 1/2" (38 MM) ALUM. CAP STAMPED "OREG. STATE HWY. DIV." 50 MM BELOW SURFACE IN GOOD CONDITION. RP STA. "CONST" 2589+26.98 P.T. BK.= 2590+36.48 P.O.T. AH., 51.98 FT. LT.
1050	174893.703	377433.091	FOUND 5/8" (16 MM) IRON REBAR WITH 1 1/2" (38 MM) ALUM. CAP STAMPED "OREG. STATE HWY. DIV." 30 MM ABOVE SURFACE IN GOOD CONDITION. RP EQU. STA. "CONST" 2589+26.98 P.T. BK.= 2590+36.48 P.O.T. AH., 86.31 FT. RT.
1051	175389.871	377664.743	FOUND 5/8" (16 MM) IRON REBAR WITH 1 1/2" (38 MM) ALUM. CAP STAMPED "OREG. STATE HWY. DIV." 20 MM ABOVE SURFACE IN FAIR CONDITION. RP STA. 2571+25.71 P.S., RT.

LEGEND

- ▲ SET MONUMENT
- FOUND MONUMENT
- SET AUX. MONUMENT
- CONCRETE BARRIER
- CURB
- - - EDGE OF PAVEMENT
- FENCE
- GUARDRAIL



R/W = RIGHT OF WAY
RP = REFERENCE POINT
C.L. = CENTER LINE
PT. = POINT

POINT	NORTHING	EASTING	DESCRIPTION
1052	175368.679	377687.154	FOUND 5/8" (16 MM) IRON REBAR WITH 1 1/2" (38 MM) ALUM. CAP STAMPED "OREG. STATE HWY. DIV." 100 MM ABOVE SURFACE IN GOOD CONDITION. RP STA. 2571+25.71 P.S., LT.
1053	175375.138	377693.810	FOUND 5/8" (16 MM) IRON REBAR WITH 1 1/2" (38 MM) ALUM. CAP STAMPED "OREG. STATE HWY. DIV." FLUSH WITH SURFACE IN GOOD CONDITION. RP STA. "CONST" 2570+93.99 P.T., 54.75 FT. LT.
1070	175379.866	377675.313	FOUND 3/4" (19 MM) BRASS PLUG SET IN TOP OF CONC. MEDIAN BARRIER. STA. "CONST" 2571+25.71 P.S., AT C.L.
1071	174891.716	377459.281	FOUND 3/4" (19 MM) BRASS PLUG SET IN TOP OF CONC. MEDIAN BARRIER. EQUATION STA. "CONST" 2589+26.98 P.T. BK.= 2590+36.48 P.O.T. AH., AT C.L.
500	175262.249	377591.209	SET 16 MM X 762 MM SQ. IRON ROD WITH 38 MM ALUM. CAP STAMPED "ODOT HORIZ. CONTROL 500".
514	175011.019	377469.853	SET PK NAIL AND SHINER.

REGISTERED
PROFESSIONAL
LAND SURVEYOR

Christine V. Blavin

OREGON
JULY 18, 1994
CHRISTINE V. BLAVIN
2000

EXPIRES: DEC. 31, 1999



1 METER = 3937 U.S. FEET / 1200
TO CONVERT A METRIC DISTANCE DIVIDE BY 0.30480061

OREGON DEPARTMENT OF TRANSPORTATION

HORIZONTAL CONTROL
AND RECOVERY MAP

GARDEN VALLEY - ROBERTS CREEK SEC.
INTERSTATE 5

3500 STEWART PARKWAY, SUITE 140
ROSEBURG, OREGON 97470

PROJECT KEY *09108

SHEET 5 OF 12

ST. HWY. 15-006E

MAP FILE M133-75 E