

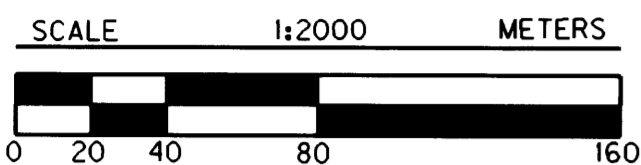
COUNTY SURVEYORS FILE DATA
DO NOT REMOVE FROM OFFICE

SW 1/4 & SE 1/4 SEC. 13 AND NE 1/4 SEC. 24, T. 27 S., R. 6 W., W.M.

FILED

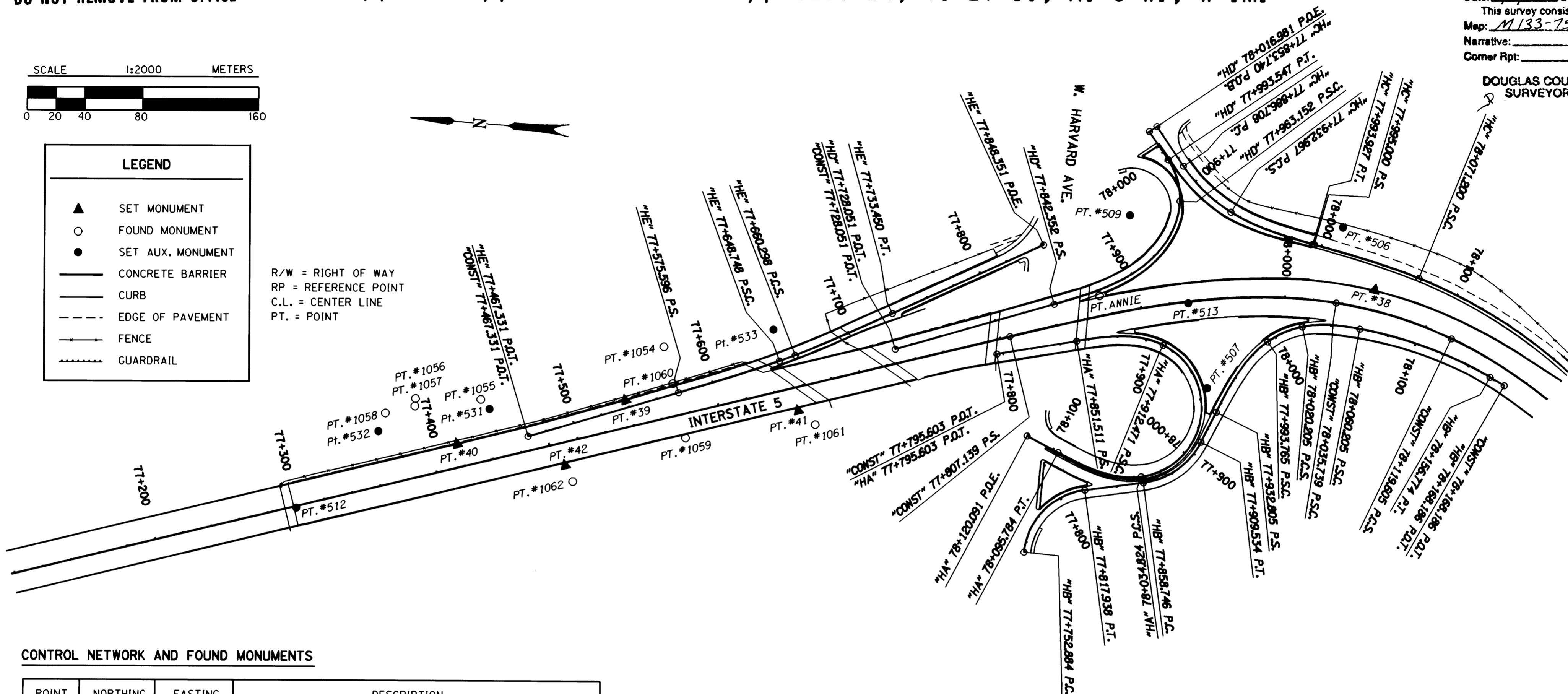
Date: 12/21/1999 By: JP
This survey consists of: 12 SHEETS
Map: M133-75 D
Narrative:
Corner Rpt:

DOUGLAS COUNTY
SURVEYOR



LEGEND	
▲	SET MONUMENT
○	FOUND MONUMENT
●	SET AUX. MONUMENT
—	CONCRETE BARRIER
—	CURB
- - -	EDGE OF PAVEMENT
—	FENCE
- - -	GUARDRAIL

R/W = RIGHT OF WAY
RP = REFERENCE POINT
C.L. = CENTER LINE
PT. = POINT



CONTROL NETWORK AND FOUND MONUMENTS

POINT	NORTHING	EASTING	DESCRIPTION
38	175626.363	377845.503	SET 16 MM X 762 MM IRON REBAR WITH 38 MM BRASS CAP STAMPED "ODOT CONTROL 38".
39	176136.667	377726.317	SET 16 MM X 200 MM IRON REBAR WITH 38 MM BRASS CAP STAMPED "ODOT CONTROL 39".
40	176250.137	377686.481	SET 16 MM X 762 MM IRON REBAR WITH 38 MM BRASS CAP STAMPED "ODOT CONTROL 40".
41	176017.169	377729.116	SET 16 MM X 762 MM IRON REBAR WITH 38 MM BRASS CAP STAMPED "ODOT CONTROL 41".
42	176174.412	377677.783	SET 16 MM X 762 MM IRON REBAR WITH 38 MM BRASS CAP STAMPED "ODOT CONTROL 42".
ANNIE	175816.013	377824.699	FOUND 2 3/4" (70 MM) BRASS DISK SET IN CONCRETE GORE STAMPED "DOUGLAS CO. SURVEYORS OFFICE ANNIE 1982".
1054	176112.957	377764.440	FOUND 5/8" (16 MM) IRON REBAR WITH 1 1/2" (38 MM) ALUM. CAP STAMPED "OREG. STATE HWY. DIV. R/W 2545+50" 70 MM ABOVE SURFACE IN GOOD CONDITION. R/W STA. 2545+50, 175 FT. LT.
1055	176236.182	377717.730	FOUND 5/8" (16 MM) IRON ROD WITH 1 1/2" (38 MM) ALUM. CAP STAMPED "OREG. STATE HWY. DIV." FLUSH WITH SURFACE IN GOOD CONDITION.
1056	176281.158	377714.670	FOUND 5/8" (16 MM) IRON ROD WITH 1 1/2" (38 MM) ALUM. CAP STAMPED "OREG. STATE HWY. DIV." 100 MM BELOW SURFACE IN GOOD CONDITION.
1057	176281.214	377709.423	FOUND 5/8" (16 MM) IRON ROD WITH 1 1/2" (38 MM) ALUM. CAP STAMPED "OREG. STATE HWY. DIV." FLUSH WITH SURFACE.
1058	176301.079	377702.916	FOUND 5/8" (16 MM) IRON ROD WITH 1 1/2" (38 MM) ALUM. CAP STAMPED "OREG. STATE HWY. DIV." FLUSH WITH SURFACE. R/W STA. 2539+00, 175.00 FT. LT.

POINT	NORTHING	EASTING	DESCRIPTION
1059	176092.885	377702.734	FOUND 5/8" (16 MM) IRON REBAR WITH 1 1/2" (38 MM) ALUM. CAP STAMPED "OREG. STATE HWY. DIV." FLUSH WITH SURFACE IN POOR CONDITION. RP STA. "CONST" 2545+00 P.O.T., 54.01 FT. RT.
1060	176104.797	377739.532	FOUND 5/8" (16 MM) IRON REBAR WITH 1 1/2" (38 MM) ALUM. CAP STAMPED "OREG. STATE HWY. DIV." 20 MM BELOW SURFACE IN GOOD CONDITION. RP STA. 2545+00 "CONST" P.O.T., 72.78 FT. LT.
1061	176004.456	377719.391	FOUND 5/8" (16 MM) IRON ROD WITH 1 1/2" (38 MM) ALUM. CAP STAMPED "OREG. STATE HWY. DIV." 100 MM BELOW SURFACE IN GOOD CONDITION. R/W FIELD INTERSECT PT.
1062	176168.065	377666.206	FOUND 5/8" (16 MM) IRON ROD 100 MM BELOW SURFACE IN GOOD CONDITION. R/W STA. 2543+00, 75 FT. RT.
506	175652.079	377885.732	SET 13 MM X 762 MM SQ. IRON ROD WITH 38 MM ALUM. CAP STAMPED "ODOT HORIZ. CONTROL 506".
507	175736.549	377767.047	SET 13 MM X 762 MM SQ. IRON ROD WITH 38 MM ALUM. CAP STAMPED "ODOT HORIZ. CONTROL 507".
509	175799.744	377882.035	SET 16 MM X 762 MM IRON REBAR WITH A 38 MM ALUM. CAP STAMPED "ODOT HORIZ. CONTROL 509".
512	176356.967	377632.351	SET PK NAIL AND SHINER.
513	175754.411	377824.502	SET PK NAIL AND SHINER.
531	176229.647	377711.534	SET PK NAIL AND SHINER IN ASPHALT CONC. AT BIKEPATH.
532	176304.993	377689.849	SET PK NAIL AND SHINER IN ASPHALT CONC. AT BIKEPATH.
533	176038.623	377782.485	SET PK NAIL AND SHINER IN CONC. WALK.

REGISTERED
PROFESSIONAL
LAND SURVEYOR

Christian V. Blavin

OREGON
JULY 19, 1994
CHRISTINE V. BLAVIN
2000

EXPIRES: DEC. 31, 1999



1 METER = 3937 U.S. FEET / 1200
TO CONVERT A METRIC DISTANCE DIVIDE BY 0.30480061

OREGON DEPARTMENT OF TRANSPORTATION

HORIZONTAL CONTROL
AND RECOVERY MAP

GARDEN VALLEY - ROBERTS CREEK SEC.
INTERSTATE 5

3500 STEWART PARKWAY, SUITE 140
ROSEBURG, OREGON 97470

PROJECT KEY *09108

SHEET 4 OF 12

ST. HWY. 15-006D

MAP FILE M133-75 D

MAP FILE M133-75 D