

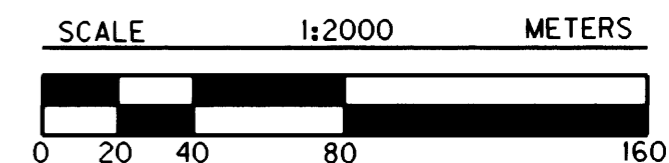
COUNTY SURVEYORS FILE DATA
DO NOT REMOVE FROM OFFICE

NW 1/4 & SW 1/4 SEC. 13, T. 27 S., R. 6 W., W.M.

FILED

Date: 12/21/1999 By: J.P.
This survey consists of: 12 sheets
Map: M133-75 C
Narrative: _____
Corner Rpt: _____

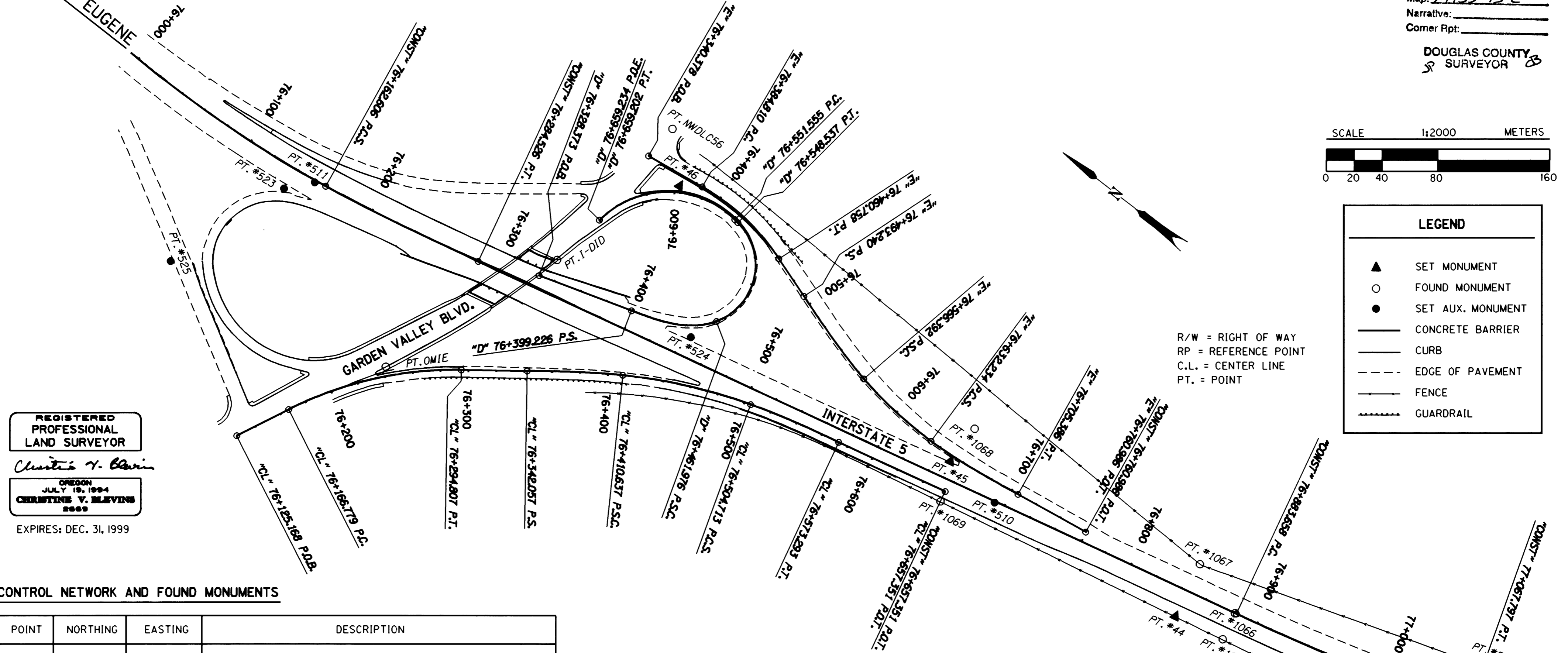
DOUGLAS COUNTY
SURVEYOR



LEGEND

- ▲ SET MONUMENT
- FOUND MONUMENT
- SET AUX. MONUMENT
- CONCRETE BARRIER
- CURB
- - - EDGE OF PAVEMENT
- FENCE
- - - GUARDRAIL

R/W = RIGHT OF WAY
RP = REFERENCE POINT
C.L. = CENTER LINE
PT. = POINT



REGISTERED
PROFESSIONAL
LAND SURVEYOR

Christine V. Mevins

OREGON
JULY 19, 1994
CHRISTINE V. MEVINS
2009

EXPIRES: DEC. 31, 1999

CONTROL NETWORK AND FOUND MONUMENTS

POINT	NORTHING	EASTING	DESCRIPTION
I-DID	177295.679	377414.518	FOUND 2 7/8" (73 MM) BRASS CAP SET IN SE CORNER OF GARDEN VALLEY STRUCTURE OVER I-5 FREEWAY IN SIDEWALK STAMPED "DOUGLAS CO. SURVEYOR'S OFFICE I-DID 1980". CAP IN GOOD CONDITION.
NWDLCS6	177288.111	377539.569	FOUND 2 7/8" (73 MM) BRASS CAP SET IN CAST IRON MONUMENT BOX WITH LID MARKED "WATER". BRASS CAP STAMPED "DOUGLAS CO. SURVEYOR'S OFFICE T27S R6W DLC56". CAP IN GOOD CONDITION.
43	176612.183	377568.530	SET 16 MM X 762 MM IRON REBAR WITH 38 MM BRASS CAP STAMPED "ODOT CONTROL 43".
44	176789.360	377484.996	SET 16 MM X 762 MM IRON REBAR WITH 38 MM BRASS CAP STAMPED "ODOT CONTROL 44".
45	176985.181	377473.790	SET 16 MM X 762 MM IRON REBAR WITH 38 MM BRASS CAP STAMPED "ODOT CONTROL 45".
46	177259.257	377511.687	SET 16 MM X 762 MM IRON REBAR WITH 38 MM BRASS CAP STAMPED "ODOT CONTROL 46".
1063	176570.074	377536.227	FOUND 5/8" (16 MM) IRON REBAR WITH 1 1/2" (38 MM) ALUM. CAP STAMPED "OREG. STATE HWY. DIV." 60 MM ABOVE SURFACE IN GOOD CONDITION. STA. "CONST" 2528+91.94 P.T., 86.32 FT. RT.
1064	176578.276	377561.239	FOUND 3/4" (19 MM) BRASS PLUG SET IN TOP OF CONC. MEDIAN BARRIER IN GOOD CONDITION. STA. "CONST" 2528+19.94 P.T., AT C.L.
1065	176752.036	377491.733	FOUND 5/8" (16MM) IRON REBAR WITH A 1 1/2" (38 MM) ALUM. CAP STAMPED "OREG. STATE HWY. DIV." 20 MM BELOW SURFACE IN GOOD CONDITION. RP STA. "CONST" 2522+37.42 P.O.T. BK. = 2522+84.64 P.C. AH., 67.79 FT. RT.
1066	176756.602	377511.899	FOUND 3/4" (19 MM) BRASS PLUG SET IN TOP OF CONC. MEDIAN BARRIER IN GOOD CONDITION. EQ. STA. "CONST" 2522+37.42 P.O.T. BK. = 2522+84.64 P.C. AH.

POINT	NORTHING	EASTING	DESCRIPTION
1067	176798.017	377524.259	FOUND 5/8" (16 MM) IRON ROD 200 MM BELOW SURFACE IN GOOD CONDITION. R/W POINT LT.
1068	176985.281	377502.094	FOUND 5/8" (16 MM) IRON REBAR WITH A 1 1/2" (38 MM) ALUM. CAP STAMPED "OREG. STATE HWY. DIV." FLUSH WITH SURFACE IN GOOD CONDITION. RP STA. "CONST" 2515+00 P.O.T., 135.26 FT. LT.
1069	176972.464	377445.783	FOUND 5/8" (16 MM) IRON REBAR SET IN CONC. 30 MM BELOW SURFACE IN GOOD CONDITION. RP STA. "CONST" 2515+00 P.O.T., 53.95 FT. RT.
OMIE	177345.377	377278.495	FOUND 2 7/8" (73 MM) BRASS DISK SET IN TOP OF CONC. CURB STAMPED "DOUGLAS CO. SURVEYORS OFFICE 1980 OMIE" DISK IN GOOD CONDITION.
510	176941.418	377468.837	SET PK NAIL AND SHINER.
511	177466.909	377351.981	SET PK NAIL AND SHINER.
523	177481.727	377334.970	SET 16 MM X 762 MM IRON REBAR WITH A 38 MM ALUM. CAP STAMPED "ODOT HORIZ. CONTROL 523" FLUSH WITH SURFACE.
524	177185.803	377429.134	SET 16 MM X 762 MM IRON REBAR WITH A 38 MM ALUM. CAP STAMPED "ODOT HORIZ. CONTROL 524" FLUSH WITH SURFACE.
525	177513.724	377244.114	SET 16 MM X 762 MM IRON REBAR WITH A 38 MM ALUM. CAP STAMPED "ODOT HORIZ. CONTROL 525".
527	176578.278	377597.239	SET 16 MM X 762 MM IRON REBAR WITH A 38 MM ALUM. CAP STAMPED "ODOT HORIZ. CONTROL 527".



1 METER = 3937 U.S. FEET / 1200
TO CONVERT A METRIC DISTANCE DIVIDE BY 0.30480061

OREGON DEPARTMENT OF TRANSPORTATION

HORIZONTAL CONTROL
AND RECOVERY MAP

GARDEN VALLEY - ROBERTS CREEK SEC.
INTERSTATE 5

3500 STEWART PARKWAY, SUITE 140
ROSEBURG, OREGON 97470

PROJECT KEY *09108

SHEET 3 OF 12

ST. HWY. 15-006C

MAP FILE M133-75 C