

COUNTY SURVEYORS FILE DATA
DO NOT REMOVE FROM OFFICE

SEC. 1, 2, 11, 12, & 13, T. 28 S., R.6 W., W.M.

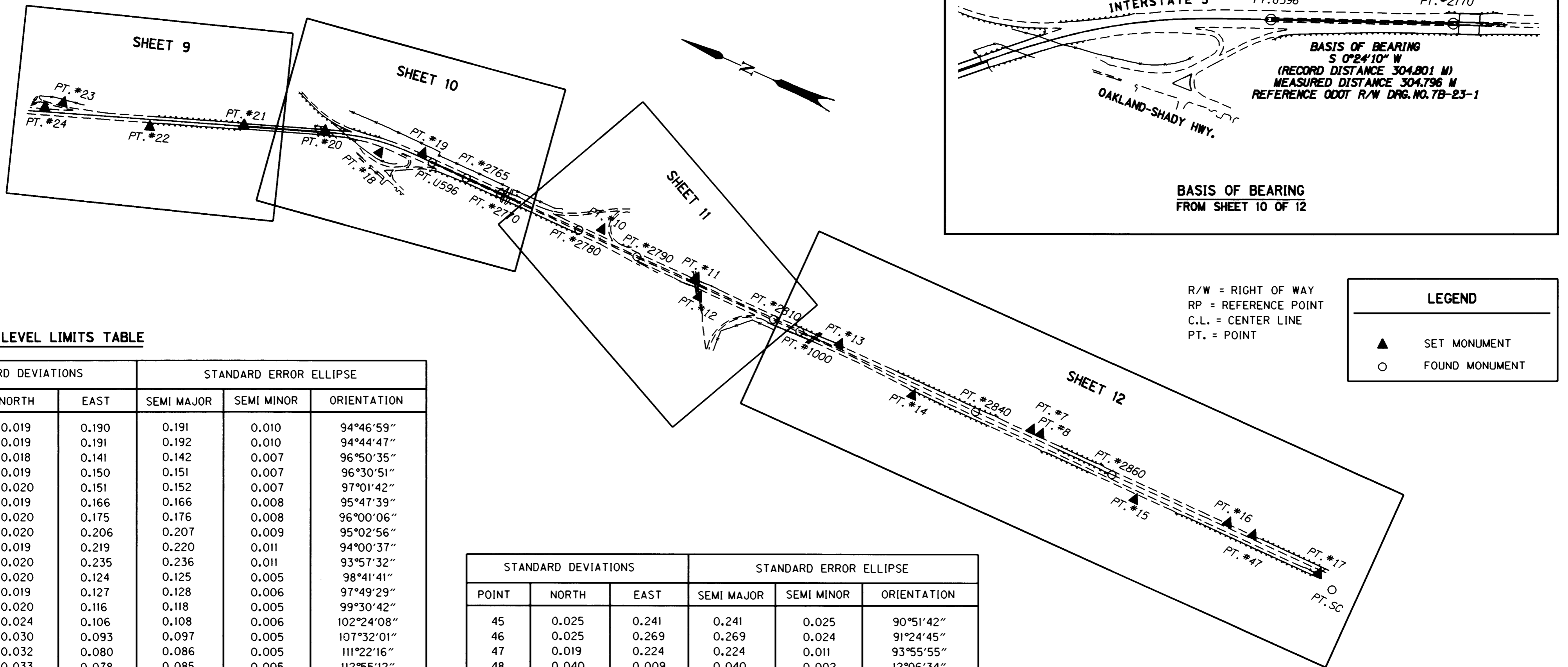
FILED

Date: 12/21/1999 By: JP
This survey consists of: 12 SHEETS
Map: M133-75 B
Narrative: _____
Corner Rpt: _____

DOUGLAS COUNTY
SURVEYOR

MAP FILE M133-75 B

NETWORK SCHEMATIC
NOT TO SCALE



R/W = RIGHT OF WAY
RP = REFERENCE POINT
C.L. = CENTER LINE
PT. = POINT

LEGEND

- ▲ SET MONUMENT
- FOUND MONUMENT

CONFIDENCE LEVEL LIMITS TABLE

POINT	STANDARD DEVIATIONS		STANDARD ERROR ELLIPSE		
	NORTH	EAST	SEMI MAJOR	SEMI MINOR	ORIENTATION
7	0.019	0.190	0.191	0.010	94°46'59"
8	0.019	0.191	0.192	0.010	94°44'47"
10	0.018	0.141	0.142	0.007	96°50'35"
11	0.019	0.150	0.151	0.007	96°30'51"
12	0.020	0.151	0.152	0.007	97°01'42"
13	0.019	0.166	0.166	0.008	95°47'39"
14	0.020	0.175	0.176	0.008	96°00'06"
15	0.020	0.206	0.207	0.009	95°02'56"
16	0.019	0.219	0.220	0.011	94°00'37"
17	0.020	0.235	0.236	0.011	93°57'32"
18	0.020	0.124	0.125	0.005	98°41'41"
19	0.019	0.127	0.128	0.006	97°49'29"
20	0.020	0.116	0.118	0.005	99°30'42"
21	0.024	0.106	0.108	0.006	102°24'08"
22	0.030	0.093	0.097	0.005	107°32'01"
23	0.032	0.080	0.086	0.005	111°22'16"
24	0.033	0.078	0.085	0.005	112°55'12"
25	0.039	0.067	0.078	0.005	120°04'22"
26	0.041	0.062	0.074	0.006	123°06'44"
27	0.037	0.043	0.056	0.006	130°49'10"
28	0.031	0.035	0.046	0.006	131°01'49"
29	0.024	0.030	0.038	0.005	128°20'59"
30	0.011	0.022	0.025	0.002	116°47'19"
31	0.004	0.013	0.013	0.002	104°09'31"
32	0.009	0.013	0.016	0.002	123°02'31"
33	0.009	0.033	0.034	0.003	105°25'13"
34	0.013	0.038	0.040	0.003	108°04'54"
35	0.014	0.056	0.058	0.003	103°24'26"
36	0.015	0.073	0.075	0.003	101°32'11"
37	0.037	0.106	0.113	0.006	108°59'58"
38	0.042	0.117	0.125	0.007	109°30'01"
39	0.033	0.161	0.164	0.011	100°52'36"
40	0.030	0.171	0.173	0.014	98°56'31"
41	0.033	0.150	0.153	0.010	101°50'38"
42	0.030	0.164	0.166	0.014	99°08'29"
43	0.025	0.205	0.206	0.021	94°00'51"
44	0.025	0.222	0.222	0.024	91°25'31"

POINT	STANDARD DEVIATIONS		STANDARD ERROR ELLIPSE		
	NORTH	EAST	SEMI MAJOR	SEMI MINOR	ORIENTATION
45	0.025	0.241	0.241	0.025	90°51'42"
46	0.025	0.269	0.269	0.024	91°24'45"
47	0.019	0.224	0.224	0.011	93°55'55"
48	0.040	0.009	0.040	0.002	12°06'34"
49	0.010	0.059	0.059	0.005	98°19'17"
100	0.013	0.072	0.073	0.004	99°40'52"
101	0.021	0.092	0.094	0.004	102°39'28"
1000	0.019	0.161	0.162	0.008	96°13'42"
2765	0.019	0.130	0.131	0.006	97°52'08"
2770	0.019	0.129	0.130	0.006	97°55'53"
2780	0.019	0.139	0.140	0.007	97°18'52"
2790	0.019	0.145	0.146	0.007	97°02'08"
2810	0.019	0.158	0.159	0.008	96°21'26"
2840	0.019	0.183	0.184	0.009	95°21'10"
2860	0.019	0.202	0.202	0.010	94°44'17"
257094	0.028	0.100	0.104	0.004	105°37'15"
262400	0.004	0.002	0.004	0.002	7°35'15"
264997	0.020	0.029	0.035	0.004	124°52'28"
ANNIE	0.040	0.133	0.139	0.005	106°45'01"
I-DID	0.027	0.273	0.273	0.027	89°15'37"
NWDLCS6	0.025	0.272	0.272	0.023	91°59'16"
PM7	0.041	0.049	0.064	0.006	129°36'11"
SC	0.021	0.238	0.239	0.011	94°18'33"
U596	0.019	0.129	0.130	0.006	97°55'25"

METRIC SURVEY
1 METER = 3937 U.S. FEET / 1200
TO CONVERT A METRIC DISTANCE DIVIDE BY 0.30480061

REGISTERED
PROFESSIONAL
LAND SURVEYOR
Christine Y. Blavin
OREGON
JULY 19, 1994
CHRISTINE Y. BLAVIN
2000
EXPIRES: DEC. 31, 1999

OREGON DEPARTMENT OF TRANSPORTATION
HORIZONTAL CONTROL
AND RECOVERY MAP
GARDEN VALLEY - ROBERTS CREEK SEC.
INTERSTATE 5
3500 STEWART PARKWAY, SUITE 140
ROSEBURG, OREGON 97470
PROJECT KEY #09108