

HORIZONTAL CONTROL, RECOVERY, RETRACEMENT AND RIGHT OF WAY MONUMENTATION MAP

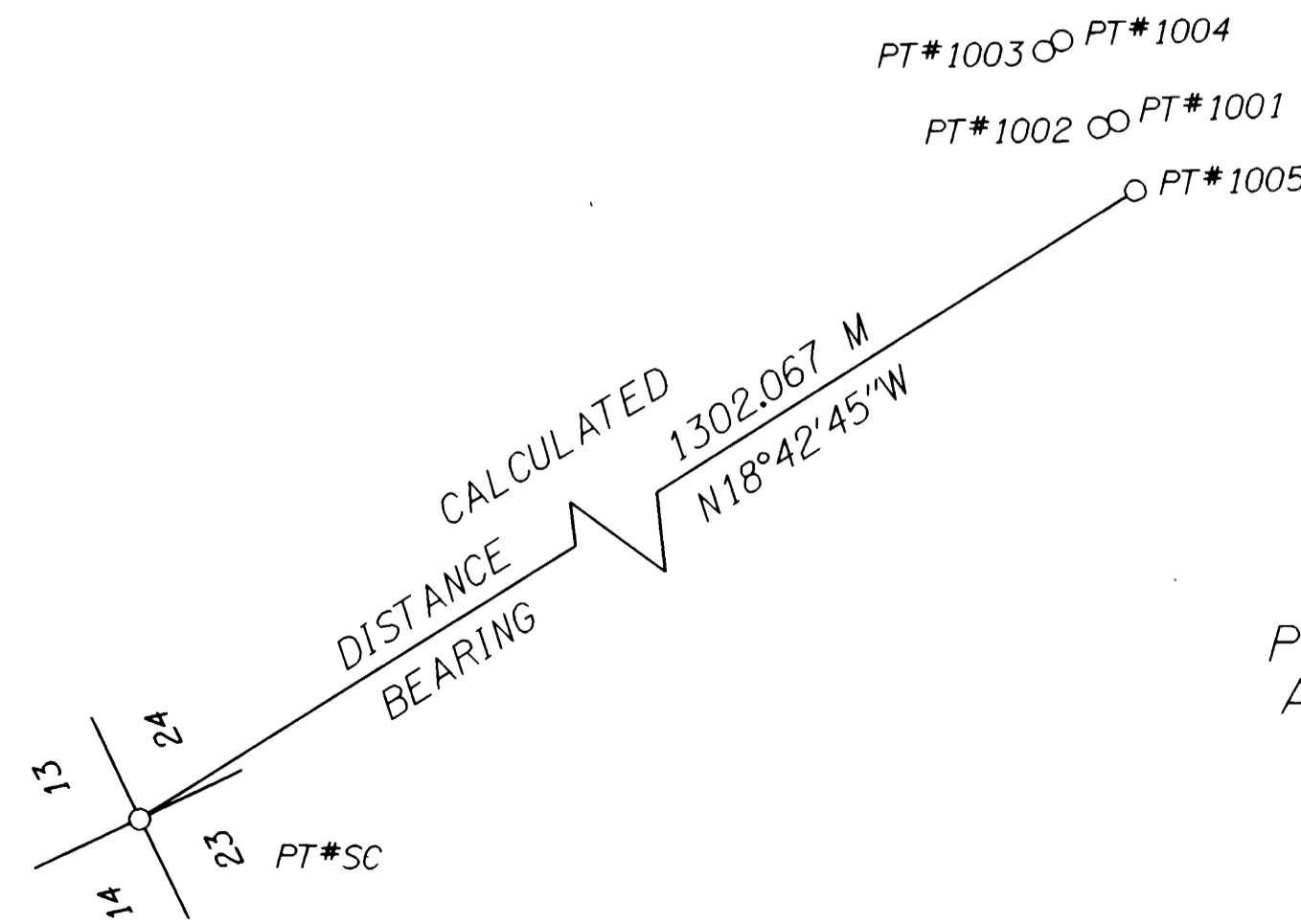
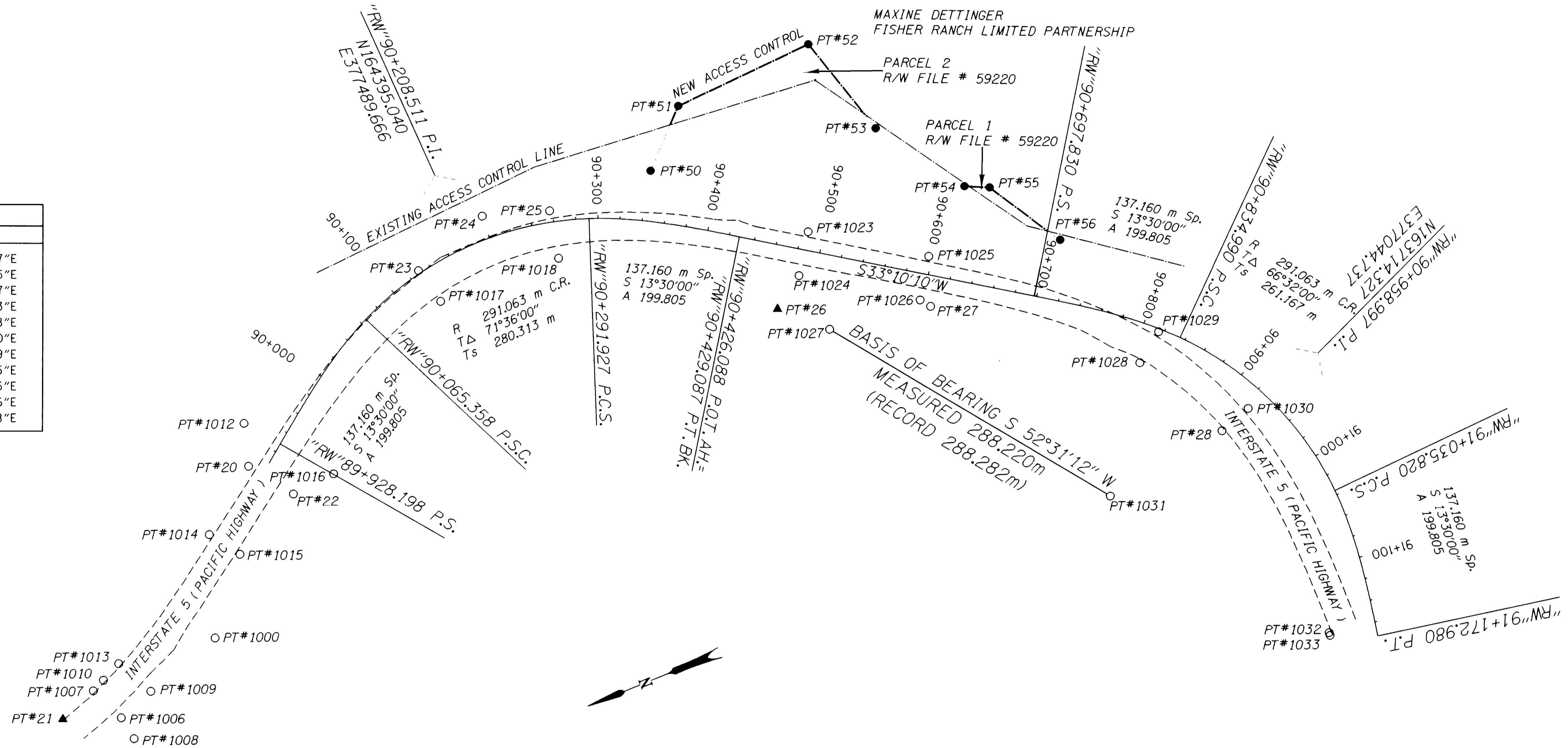
FOR THE OREGON DEPARTMENT OF TRANSPORTATION

LOCATED IN THE SW 1/4 OF SECTION 24 AND THE NE 1/4 & NW 1/4 OF SECTION 25, T28S, R6W, WILLAMETTE MERIDIAN
DOUGLAS COUNTY

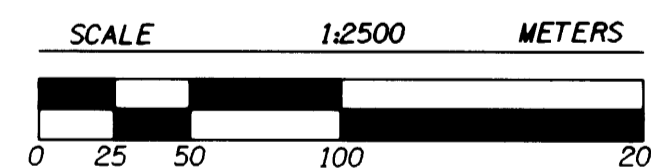
FILED
Date: 8-5-1999 By: J.P.
This survey consists of: 2 pgs.
Map: M132-10A
Narrative:
Corner Rep:
DOUGLAS COUNTY
SURVEYOR

ERROR ANALYSIS

POINT	STANDARD DEVIATIONS		STANDARD ERROR ELLIPSE		
	NORTH	EAST	SEMI MAJOR	SEMI MINOR	ORIENTATION
16	0.003	0.011	0.011	0.001	N78°41'37"E
17	0.002	0.022	0.022	0.002	N86°49'55"E
21	0.006	0.009	0.011	0.001	N58°38'57"E
22	0.002	0.002	0.002	0.002	S81°26'33"E
23	0.004	0.007	0.008	0.001	N62°20'38"E
24	0.005	0.009	0.010	0.001	N63°50'10"E
25	0.004	0.011	0.011	0.002	N69°27'09"E
26	0.007	0.015	0.015	0.006	S81°16'25"E
27	0.008	0.020	0.021	0.007	S74°51'25"E
28	0.018	0.030	0.034	0.008	S60°24'36"E
47	0.003	0.013	0.013	0.001	N80°52'58"E



POINT NUMBERS 15, 16, 17, & 47
ARE OFF MAP TO THE NORTH



LEGEND

- ▲ SET MONUMENT
- FOUND MONUMENT
- SET RIGHT-OF-WAY MONUMENT
- NEW ACCESS CONTROL LINE
- - - EDGE OF PAVEMENT
- () RECORD INFO.

REGISTERED PROFESSIONAL LAND SURVEYOR

Christine V. Blevins
OREGON JULY 18, 1994
CHRISTINE V. BLEVINS
2669

RENEWAL DATE 12-31-99
CHRISTINE V. BLEVINS P.L.S.
Oregon Department of Transportation
3500 N.W. Stewart Parkway
Roseburg, Oregon 97470

OREGON DEPARTMENT OF TRANSPORTATION
HORIZONTAL CONTROL, RECOVERY,
AND RETRACEMENT MAP FOR
ROBERTS CR. - DILLARD JUNCTION
DOUGLAS COUNTY PACIFIC HIGHWAY
O.D.O.T.
3500 STEWART PARKWAY, SUITE 140
ROSEBURG, OREGON 97470