

HORIZONTAL CONTROL, RECOVERY, RETRACEMENT AND RIGHT OF WAY MONUMENTATION MAP

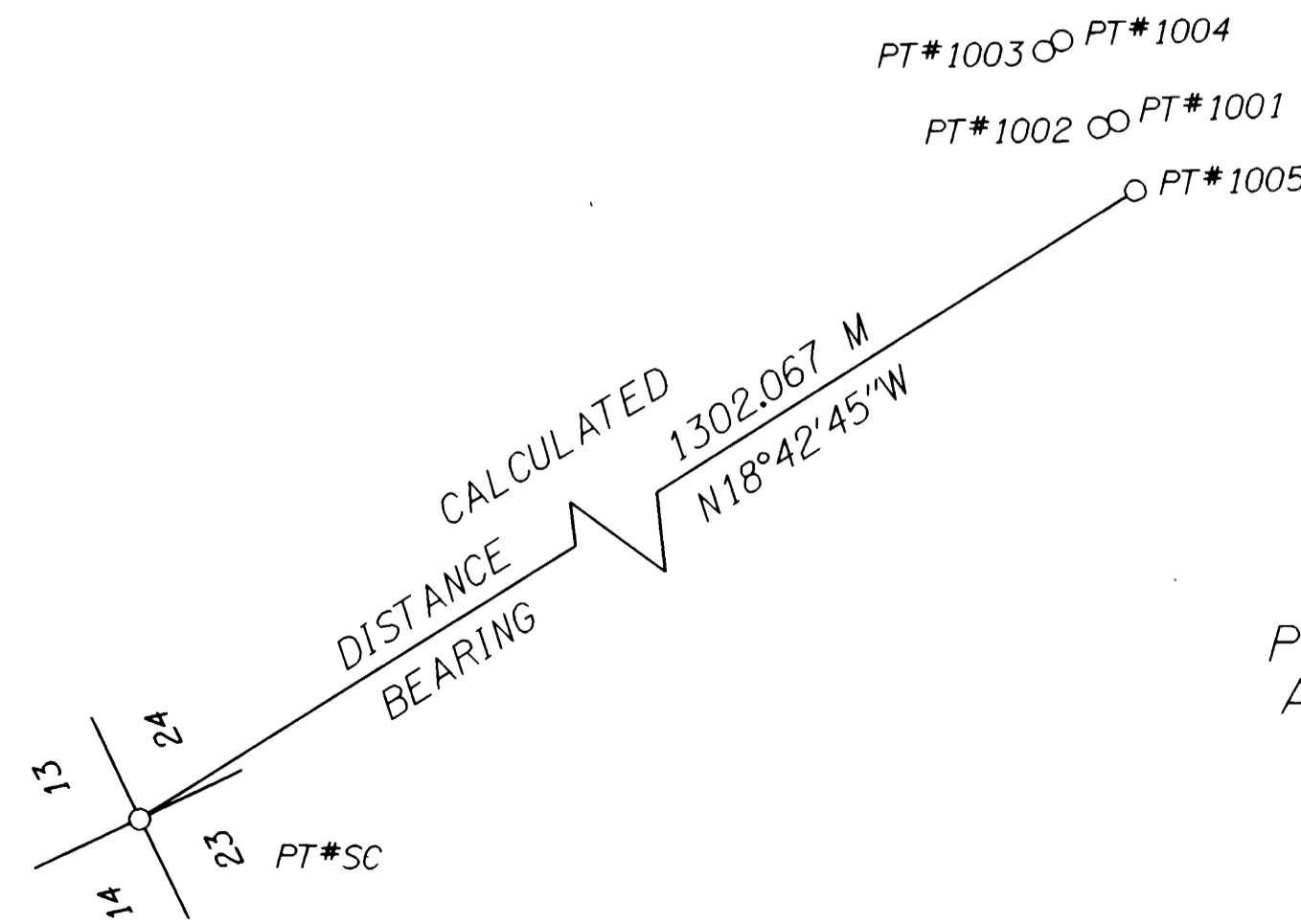
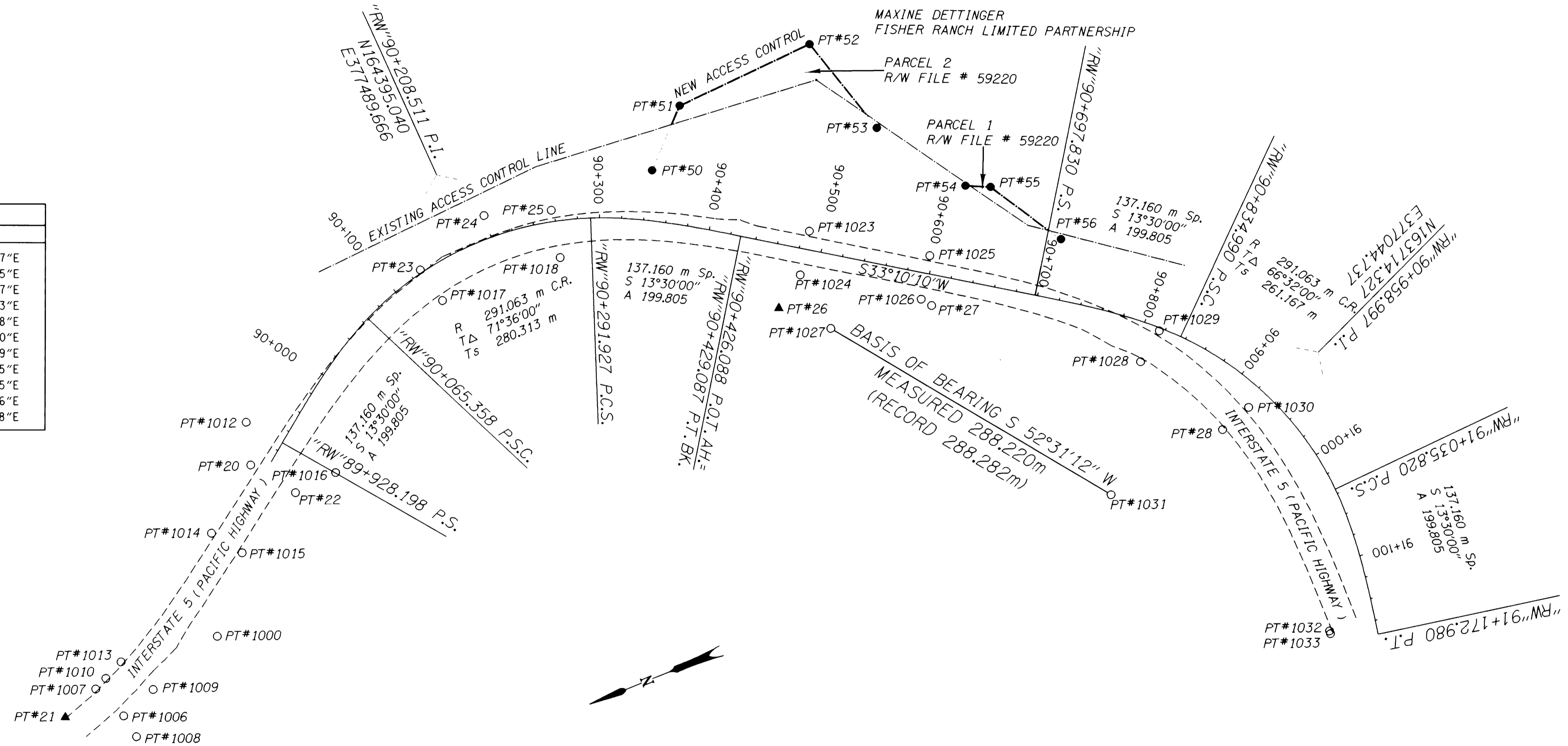
FOR THE OREGON DEPARTMENT OF TRANSPORTATION

LOCATED IN THE SW 1/4 OF SECTION 24 AND THE NE 1/4 & NW 1/4 OF SECTION 25, T28S, R6W, WILLAMETTE MERIDIAN DOUGLAS COUNTY

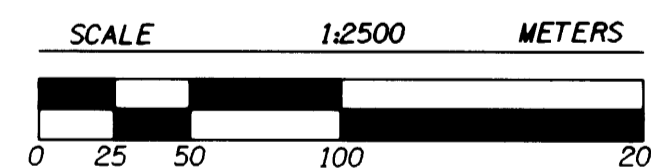
FILED
Date: 8-5-1999 By: J.P.
This survey consists of: 2 pgs.
Map: M132-10A
Narrative: _____
Corner Ref: _____
DOUGLAS COUNTY
SURVEYOR

ERROR ANALYSIS

POINT	STANDARD DEVIATIONS		STANDARD ERROR ELLIPSE		
	NORTH	EAST	SEMI MAJOR	SEMI MINOR	ORIENTATION
16	0.003	0.011	0.011	0.001	N78°41'37"E
17	0.002	0.022	0.022	0.002	N86°49'55"E
21	0.006	0.009	0.011	0.001	N58°38'57"E
22	0.002	0.002	0.002	0.002	S81°26'33"E
23	0.004	0.007	0.008	0.001	N62°20'38"E
24	0.005	0.009	0.010	0.001	N63°50'10"E
25	0.004	0.011	0.011	0.002	N69°27'09"E
26	0.007	0.015	0.015	0.006	S81°16'25"E
27	0.008	0.020	0.021	0.007	S74°51'25"E
28	0.018	0.030	0.034	0.008	S60°24'36"E
47	0.003	0.013	0.013	0.001	N80°52'58"E



POINT NUMBERS 15, 16, 17, & 47
ARE OFF MAP TO THE NORTH



LEGEND	
▲	SET MONUMENT
○	FOUND MONUMENT
●	SET RIGHT-OF-WAY MONUMENT
---	NEW ACCESS CONTROL LINE
- - -	EDGE OF PAVEMENT
()	RECORD INFO.

REGISTERED PROFESSIONAL LAND SURVEYOR

Christine V. Blevins
OREGON JULY 18, 1994
CHRISTINE V. BLEVINS
2669

RENEWAL DATE 12-31-99
CHRISTINE V. BLEVINS P.L.S.
Oregon Department of Transportation
3500 N.W. Stewart Parkway
Roseburg, Oregon 97470

OREGON DEPARTMENT OF TRANSPORTATION
HORIZONTAL CONTROL, RECOVERY,
AND RETRACEMENT MAP FOR
ROBERTS CR. - DILLARD JUNCTION
DOUGLAS COUNTY PACIFIC HIGHWAY
O.D.O.T.
3500 STEWART PARKWAY, SUITE 140
ROSEBURG, OREGON 97470

KEY * 04489

SHEET 1 OF 2



HORIZONTAL CONTROL, RECOVERY, AND RETRACEMENT MAP

FOR THE OREGON DEPARTMENT OF TRANSPORTATION

LOCATED IN THE SW 1/4 OF SECTION 24 AND THE NE 1/4 & NW 1/4 OF SECTION 25, T28S, R6W, WILLAMETTE MERIDIAN

DOUGLAS COUNTY

FILED
Date: 8-5-1999 By: J.P.
This survey consists of: 2 Pgs.
Map: M132-10B
Narrative:
Corner Ppt:
DOUGLAS COUNTY
SURVEYOR

SURVEY NARRATIVE

THE PURPOSE OF THIS SURVEY FOR THE OREGON DEPARTMENT OF TRANSPORTATION WAS TO RECOVER EXISTING MONUMENTS, RETRACE THE CENTERLINE, AND SET NEW RIGHT OF WAY MONUMENTS ALONG INTERSTATE 5 NEAR ROBERTS MOUNTAIN SUMMIT AT APPROXIMATE MILEPOINT 116.4. THE ORIGINAL PROJECT AT THIS LOCATION WAS NAMED "ROBERTS CREEK - DILLARD JUNCTION". THIS SURVEY, HOWEVER, PERTAINS ONLY TO THE ADDITIONAL RIGHT OF WAY OBTAINED FOR A MINOR SLIDE REPAIR WHICH TOOK PLACE AFTER THE PROJECT WAS COMPLETE. THE SURVEY BEGAN MARCH 8, 1999 AND WAS COMPLETED JUNE 22, 1999, AND THE ORIGINAL FIELD NOTES ARE ARCHIVED WITH O.D.O.T. IN SALEM AS BOOK # 3666

THE BASIS OF BEARING FOR THE SURVEY NETWORK WAS TAKEN FROM TWO FOUND MONUMENTS RECORDED ON ODOT'S RIGHT OF WAY DRAWING NO. 88-29-3, REVISED IN FEBRUARY 1995: NAMELY MONUMENTS AT STATION 2970+00.220 FEET RIGHT, AND STATION 2980+14.47 P.S.C. INTERSECT POINT AT 512.34 FEET RIGHT, THE CALCULATED BEARING BEING S 52°31'12" W. COORDINATES ON THE RIGHT OF WAY DRAWING ARE LOCAL DATUM PLANE (LDP) COORDINATES DERIVED FROM THE OREGON STATE PLANE COORDINATE SYSTEM, 1927 DATUM, SOUTH ZONE. LDP COORDINATES REPRESENT TRUE GROUND DISTANCES.

THIS SURVEY WAS DONE IN METRIC, WHERE 1 METER = 3937 US SURVEY FEET/1200 (OR MULTIPLY ENGLISH BY 0.30480061).

THE NETWORK WAS ADJUSTED USING A LEAST SQUARES METHOD WHICH PRODUCED ANGULAR AND DISTANCE RESIDUALS (THE AMOUNT THE FIELD OBSERVED ANGLES AND DISTANCES WERE CHANGED DUE TO THE ADJUSTMENT). THE AVERAGE ANGULAR RESIDUAL WAS 1.8 SECONDS WITH THE LARGEST RESIDUAL BEING 6 SECONDS, THE AVERAGE DISTANCE RESIDUAL WAS 1.9 mm AND THE LARGEST RESIDUAL BEING 11 mm. THERE IS A 95% PROBABILITY THAT THE FINAL POSITIONS OF THE CONTROL POINTS ARE WITHIN THE ERROR ELLIPSES AS SHOWN IN THE TABLE (SHEET 1 OF 2).

THE RIGHT OF WAY CENTERLINE IS AN EXACT RETRACEMENT OF THE ALIGNMENT AS SHOWN ON ODOT'S RIGHT OF WAY DRAWING NO. 88-29-3, POINT 1027 (ENGLISH STATION 2970+00.220 FT. RIGHT) WAS HELD AS THE CONTROLLING POINT FOR THE ALIGNMENT FOR POSITION AND STATIONING.

THE NEW RIGHT OF WAY MONUMENTS WERE SET PER WARRANTY DEED #95-07771, BOOK 1348, PAGE 560, FILED AT THE DOUGLAS COUNTY CLERK'S OFFICE, REFER ALSO TO ODOT'S RIGHT OF WAY DRAWING NO. 88-29-3, FEBRUARY 1995 REVISION. THIS DEED REPRESENTS TWO SEPARATE PARCELS. THE NEW MONUMENTS WERE SET USING RADIAL STAKEOUT.

A LEICA TCA1800 TOTAL STATION WAS USED FOR THE SURVEY DONE BY AN ODOT CREW IN ROSEBURG. THE LEICA TCA1800 HAS A STANDARD ERROR OF +/- 1 SECOND, AND A STANDARD DISTANCE ERROR OF +/- 2 MM, +/- 2 PPM.

PT.*15
N 167106.467
E 376664.584
FOUND 3/4" (16 MM) I. REBAR WITH 1 1/2" (38 MM)
BRASS CAP STAMPED "ODOT CONTROL 15"
50 MM BELOW SURFACE IN GOOD CONDITION.

PT.*16
N 166720.807
E 376734.111
FOUND 3/4" (16 MM) I. REBAR WITH 1 1/2" (38 MM)
BRASS CAP STAMPED "ODOT CONTROL 16"
30 MM BELOW SURFACE IN GOOD CONDITION.

PT.*17
N 166301.666
E 376698.149
FOUND 3/4" (16 MM) I. REBAR WITH 1 1/2" (38 MM)
BRASS CAP STAMPED "ODOT CONTROL 17"
50 MM BELOW SURFACE IN GOOD CONDITION.

PT.*20
N 164648.072
E 377307.233
FOUND 3/4" (16 MM) I. REBAR WITH 1 1/2" (38 MM)
ALUM. CAP STAMPED "OREG. STATE HWY. DIV."
30 MM ABOVE SURFACE IN GOOD CONDITION
S.H.R.P. STA. 2949+24.17 P.S., 63.00 FT. LT.

PT.*21
N 164888.688
E 377156.306
SET HUB & TACK

PT.*22
N 164620.659
E 377269.303
FOUND 3/4" (16 MM) I. REBAR WITH 1 1/2" (38 MM)
ALUM. CAP STAMPED "OREG. STATE HWY. DIV."
80 MM ABOVE SURFACE IN GOOD CONDITION
S.H.R.P. STA. 2949+24.17 P.S., 90.57 FT. RT.

PT.*23
N 164440.333
E 377413.288
FOUND 3/4" (16 MM) I. REBAR WITH 1 1/2" (38 MM)
ALUM. CAP STAMPED "SHRP OREG. STATE HWY. DIV."
FLUSH WITH SURFACE IN GOOD CONDITION
S.H.R.P. STA. 2956+74.17 P.S.C., 46.34 FT. LT.

PT.*24
N 164368.945
E 377439.834
FOUND 3/4" (16 MM) I. REBAR WITH 1 1/2" (38 MM)
PLASTIC CAP STAMPED "DOUG. CO. SURVEYORS"

PT.*25
N 164310.990
E 377421.429
FOUND 3/4" (16 MM) I. REBAR WITH 1 1/2" (38 MM)
ALUM. CAP STAMPED "OREG. STATE HWY. DIV."
60 MM ABOVE SURFACE IN GOOD CONDITION
S.H.R.P. STA. 2960+78.61 P.C.S., 64.39 FT. LT.

PT.*26
N 164152.065
E 377265.794
SET 16 MM X 762 MM I. REBAR WITH 38 MM
BRASS CAP STAMPED "ODOT CONTROL 26"

PT.*27
N 164023.235
E 377213.398
FOUND 3/4" (16 MM) I. ROD WITH 1 1/2" (38 MM)
ALUM. CAP STAMPED "OREG. STATE HWY. DEPT."
30 MM ABOVE SURFACE IN GOOD CONDITION

PT.*28
N 163819.539
E 377012.266
FOUND 3/4" (16 MM) I. REBAR WITH 1 1/2" (38 MM)
ALUM. CAP STAMPED "OREG. STATE HWY. DIV."
20 MM ABOVE SURFACE IN GOOD CONDITION
S.H.R.P. STA. 2982+26.78 P.C.S., 44.26 FT. RT.

PT.*47
N 166608.560
E 376730.996
FOUND 3/4" (16 MM) I. REBAR WITH 1 1/2" (38 MM)
BRASS CAP STAMPED "ODOT CONTROL 47"

PT.*50
N 164212.593
E 377421.607
SET 16 MM X 762 MM I. REBAR WITH 38 MM
ALUM. CAP STAMPED "OREG. STATE HWY. DIV. RP"
SET FLUSH WITH SURFACE.
S.H.R.P. STA. 90+342.901, 45.720 M LT.

PT.*51
N 164167.954
E 377466.651
SET 16 MM X 762 MM I. REBAR WITH 38 MM
ALUM. CAP STAMPED "ODOT RIGHT-OF-WAY"
SET FLUSH WITH SURFACE.
S.H.R.P. STA. 90+358.141, 106.680 M LT.

PT.*52
N 164038.129
E 377474.861
SET 16 MM X 762 MM I. REBAR WITH 38 MM
ALUM. CAP STAMPED "ODOT RIGHT-OF-WAY"
SET FLUSH WITH SURFACE.
S.H.R.P. STA. 90+452.629, 182.880 M LT.

PT.*53
N 164010.249
E 377383.811
SET 16 MM X 762 MM I. REBAR WITH 38 MM
ALUM. CAP STAMPED "OREG. STATE HWY. DIV. RP"
SET FLUSH WITH SURFACE.
S.H.R.P. STA. 90+525.781, 121.920 M LT.

PT.*54
N 163953.720
E 377303.167
SET 16 MM X 762 MM I. REBAR WITH 38 MM
ALUM. CAP STAMPED "OREG. STATE HWY. DIV. RP"
SET FLUSH WITH SURFACE.
S.H.R.P. STA. 90+617.221, 85.344 M LT.

PT.*55
N 163934.193
E 377294.045
SET 16 MM X 762 MM I. REBAR WITH 38 MM
ALUM. CAP STAMPED "ODOT RIGHT-OF-WAY"
SET FLUSH WITH SURFACE.
S.H.R.P. STA. 90+638.557, 88.392 M LT.

PT.*56
N 163893.790
E 377227.575
SET 16 MM X 762 MM I. REBAR WITH 38 MM
ALUM. CAP STAMPED "OREG. STATE HWY. DIV. RP"
SET FLUSH WITH SURFACE.
S.H.R.P. STA. 90+708.662, 54.864 M LT.

PT.*1000
N 164733.891
E 377173.926
FOUND 3/4" (16 MM) I. REBAR FLUSH WITH
SURFACE IN GOOD CONDITION.
S.H.R.P. STA. 2944+50 P.C.S., 125.00 FT. RT.

PT.*1001
N 164989.204
E 377096.048
FOUND 3/4" (16 MM) I. REBAR WITH 1 1/2" (38 MM)
ALUM. CAP STAMPED "OREG. STATE HWY. DEPT."
FLUSH WITH SURFACE IN GOOD CONDITION
S.H.R.P. STA. 2936+01.92 P.S., 66.27 FT. RT.

PT.*1002
N 164992.526
E 377095.774
FOUND 3/4" (16 MM) I. REBAR WITH 1 1/2" (38 MM)
ALUM. CAP STAMPED "OREG. STATE HWY. DEPT."
60 MM ABOVE SURFACE IN GOOD CONDITION
S.H.R.P. STA. 2935+92.37 P.T., 64.97 FT. RT.

PT.*1003
N 164999.707
E 377128.201
FOUND 3/4" (16 MM) I. ROD 150 MM BELOW
SURFACE IN GOOD CONDITION.
S.H.R.P. STA. 2935+92.37 P.T., 43.96 FT. LT.

PT.*1004
N 164997.115
E 377128.728
FOUND 3/4" (16 MM) I. ROD 150 MM BELOW
SURFACE IN GOOD CONDITION.
S.H.R.P. STA. 2936+01.92 P.S., 43.93 FT. LT.

PT.*1005
N 164990.296
E 377071.988
FOUND 3/4" (16 MM) I. ROD SET IN CONCRETE
40 MM ABOVE SURFACE IN GOOD CONDITION.
S.H.R.P. STA. 2935+91.63 P.S., 125.00 FT. RT.

PT.*1006
N 164839.653
E 377139.918
FOUND 3/4" (16 MM) I. REBAR WITH 1 1/2" (38 MM)
ALUM. CAP STAMPED "OREG. STATE HWY. DEPT."
FLUSH WITH SURFACE IN GOOD CONDITION

PT.*1007
N 164852.580
E 377169.355
FOUND 3/4" (16 MM) I. ROD 100 MM BELOW
SURFACE IN GOOD CONDITION.
S.H.R.P. STA. L4 2941+01.92 P.S.C., 44.00 FT. LT.

PT.*1008
N 164836.072
E 377116.175
FOUND 3/4" (16 MM) I. ROD FLUSH WITH
SURFACE IN GOOD CONDITION.

PT.*1009
N 164805.899
E 377150.171
FOUND 3/4" (16 MM) I. REBAR WITH 1 1/2" (38 MM)
ALUM. CAP STAMPED "OREG. STATE HWY. DEPT."
70 MM ABOVE SURFACE IN GOOD CONDITION
S.H.R.P. STA. L4 2942+13.77 P.C.S., 77.00 FT. RT.

PT.*1010
N 164807.794
E 377174.283
FOUND 3/4" (16 MM) I. ROD 20 MM ABOVE
SURFACE IN GOOD CONDITION. S.H.R.P. STA.
2941+39.62 P.T. AH. 2941+50.45 BK., 81.56 FT. LT.

PT.*1012
N 164637.885
E 377345.163
FOUND 3/4" (16 MM) I. ROD SET IN CONCRETE.
50 MM ABOVE SURFACE IN GOOD CONDITION.

PT.*1013
N 164822.512
E 377183.047
FOUND 3/4" (16 MM) I. ROD 150 MM BELOW
SURFACE IN GOOD CONDITION.
S.H.R.P. STA. L4 2942+13.77 P.C.S., 44.00 FT. LT.

PT.*1014
N 164704.376
E 377262.351
FOUND 3/4" (16 MM) I. REBAR WITH 1 1/2" (38 MM)
ALUM. CAP STAMPED "OREG. STATE HWY. DIV."
50 MM ABOVE SURFACE IN GOOD CONDITION.
S.H.R.P. STA. 2946+88.15 P.T., 51.85 FT. LT.

PT.*1015
N 164686.155
E 377237.122
FOUND 3/4" (16 MM) I. REBAR WITH 1 1/2" (38 MM)
ALUM. CAP STAMPED "OREG. STATE HWY. DIV."
30 MM ABOVE SURFACE IN GOOD CONDITION
S.H.R.P. STA. 2946+88.15 P.T., 50.22 FT. RT.

PT.*1016
N 164793.983
E 377272.323
FOUND 3/4" (16 MM) I. ROD FLUSH WITH
SURFACE IN GOOD CONDITION.
S.H.R.P. STA. 2950+39.43 P.S., 180.00 FT. RT.

PT.*1017
N 164432.915
E 377382.029
FOUND 3/4" (16 MM) I. REBAR WITH 1 1/2" (38 MM)
ALUM. CAP STAMPED "OREG. STATE HWY. DIV."
45 MM ABOVE SURFACE IN GOOD CONDITION
S.H.R.P. STA. 2956+74.17 P.S.C., 59.08 FT. RT.

PT.*1018
N 164319.199
E 377378.827
FOUND 3/4" (16 MM) I. REBAR WITH 1 1/2" (38 MM)
ALUM. CAP STAMPED "OREG. STATE HWY. DIV."
110 MM ABOVE SURFACE IN GOOD CONDITION
S.H.R.P. STA. 2960+78.61 P.C.S., 78.03 FT. RT.

PT.*1029
N 163840.799
E 377116.231
FOUND 3/4" (16 MM) I. ROD WITH 1 1/4" (32 MM)
PLASTIC CAP STAMPED "OSHD R/W"
20 MM BELOW SURFACE IN GOOD CONDITION
S.H.R.P. STA. 2978+93.75 P.S.C., 56.67 FT. LT.

PT.*1030
N 163791.161
E 377022.042
FOUND 3/4" (16 MM) I. REBAR WITH 1 1/2" (38 MM)
ALUM. CAP STAMPED "OREG. STATE HWY. DIV."
150 MM BELOW SURFACE IN GOOD CONDITION
S.H.R.P. STA. 2982+26.78 P.C.S., 54.16 FT. LT.

PT.*1031
N 163938.262
E 376996.906
FOUND 3/4" (16 MM) I. ROD FLUSH
WITH SURFACE IN GOOD CONDITION.
S.H.R.P. STA. 2980+14.47, 512.34 FT. RT.

PT.*1032
N 163797.796
E 376805.630
FOUND 3/4" (16 MM) I. REBAR WITH 1 1/2" (38 MM)
ALUM. CAP STAMPED "OREG. STATE HWY. DIV."
30 MM ABOVE SURFACE IN GOOD CONDITION
S.H.R.P. STA. 2989+20.90 AH. 2989+26.78 BK.,
45.41 FT. RT.

PT.*1033
N 163797.796
E 376805.198
FOUND 3/4" (16 MM) I. REBAR WITH 1 1/2" (38 MM)
ALUM. CAP STAMPED "OREG. STATE HWY. DIV."
30 MM ABOVE SURFACE IN GOOD CONDITION
S.H.R.P. STA. 2989+22.30 P.S., 45.45 FT. RT.

PT.*SC
N 166223.535
E 376654.257
FOUND 3/4" (16 MM) I. ROD 35 MM
ABOVE CONCRETE IN GOOD CONDITION.
T28S, R6W, SECTIONS 13, 14, 23, 24.

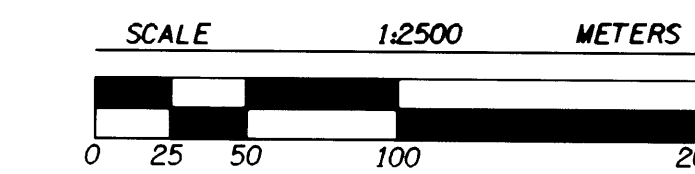
PT.*1027
N 164113.640
E 377225.627
FOUND 3/4" (16 MM) I. ROD 20 MM
BELOW SURFACE IN GOOD CONDITION.
S.H.R.P. STA. 2970+00 P.O.T., 220.00 FT. RT.

PT.*1028
N 163865.339
E 377097.503
FOUND 3/4" (16 MM) I. REBAR WITH 1 1/2" (38 MM)
ALUM. CAP STAMPED "OREG. STATE HWY. DIV."
50 MM ABOVE SURFACE IN GOOD CONDITION
S.H.R.P. STA. 2978+93.75 P.S.C., 44.58 FT. RT.

- ▲ SET MONUMENT
- FOUND MONUMENT
- SET RIGHT-OF-WAY MONUMENT
- NEW ACCESS CONTROL LINE
- EDGE OF PAVEMENT
- () RECORD INFO.

REGISTERED
PROFESSIONAL
LAND SURVEYOR
Christine V. Blevins
OREGON
JULY 19, 1994
CHRISTINE V. BLEVINS
2669

RENEWAL DATE 12-31-99
CHRISTINE V. BLEVINS P.L.S.
Oregon Department of Transportation
3500 N.W. Stewart Parkway
Roseburg, Oregon 97470



OREGON DEPARTMENT OF TRANSPORTATION
HORIZONTAL CONTROL, RECOVERY,
AND RETRACEMENT MAP FOR
ROBERTS CR. - DILLARD JUNCTION
DOUGLAS COUNTY PACIFIC HIGHWAY
O.D.O.T.
3500 STEWART PARKWAY, SUITE 140
ROSEBURG, OREGON 97470