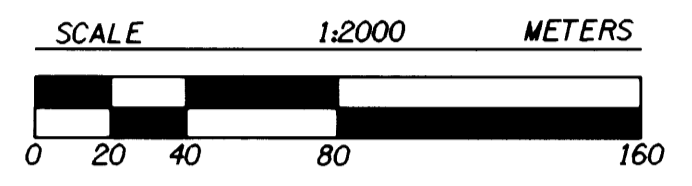


COUNTY SURVEYORS FILE DATA
DO NOT REMOVE FROM OFFICE

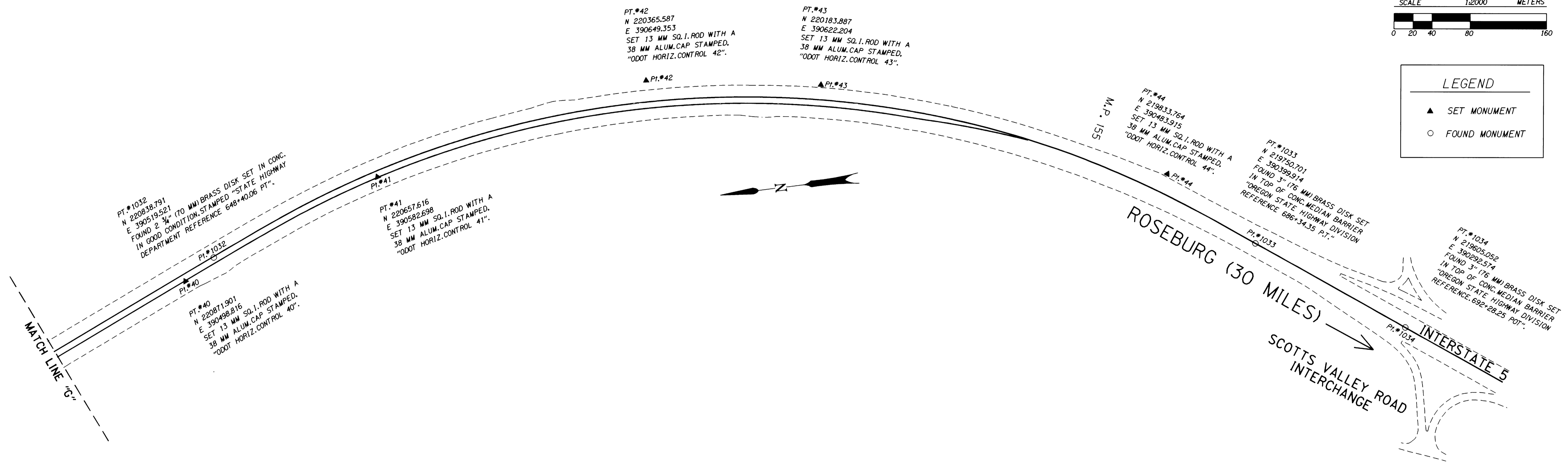
HORIZONTAL CONTROL AND RECOVERY MAP FOR THE OREGON DEPARTMENT OF TRANSPORTATION LOCATED IN THE SE 1/4 OF SECTION 30 AND THE NE 1/4, SE 1/4, & SW 1/4 OF SECTION 31, T. 22 S., R. 4 W., W.M. DOUGLAS COUNTY

FILED
Date: 6-8-1999 By: J.P.
This survey consists of: 5 PAGES
Map: M129-47E
Narrative: _____
Corner Pkt: _____
DOUGLAS COUNTY SURVEYOR

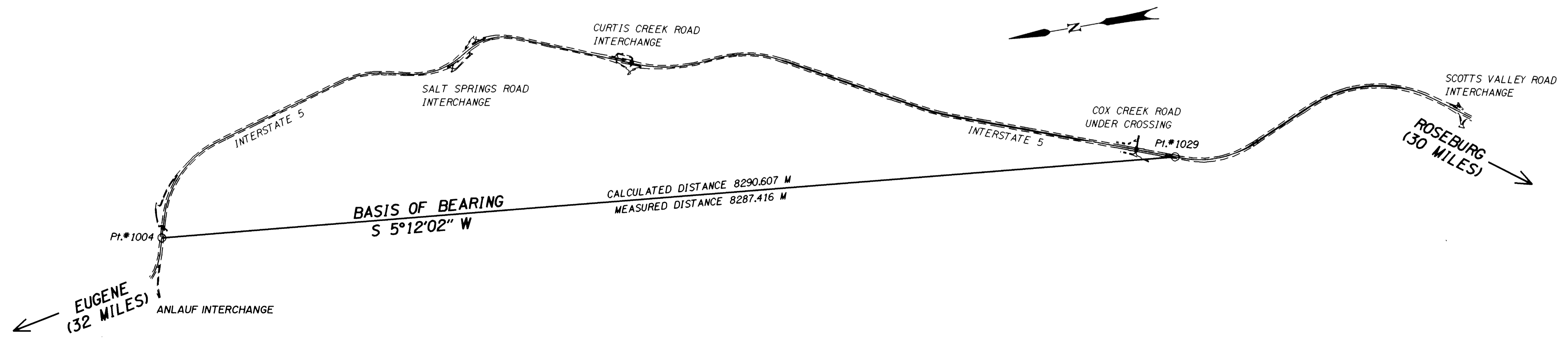


LEGEND

- ▲ SET MONUMENT
- FOUND MONUMENT



BASIS OF BEARING NOT TO SCALE



REGISTERED
PROFESSIONAL
LAND SURVEYOR

Christine V. Blevins

OREGON
JULY 19, 1994
CHRISTINE V. BLEVINS
2669

EXPIRES: DEC. 31, 1999

OREGON DEPARTMENT OF TRANSPORTATION

HORIZONTAL CONTROL
AND RECOVERY MAP

ANLAUF INT. - ELKHEAD INT.
INTERSTATE 5

3500 STEWART PARKWAY, SUITE 140
ROSEBURG, OREGON 97470