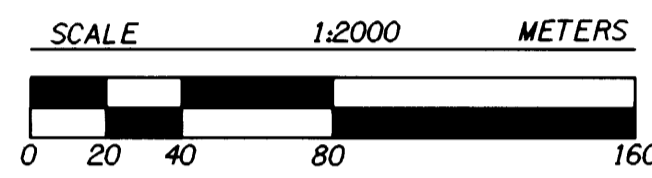


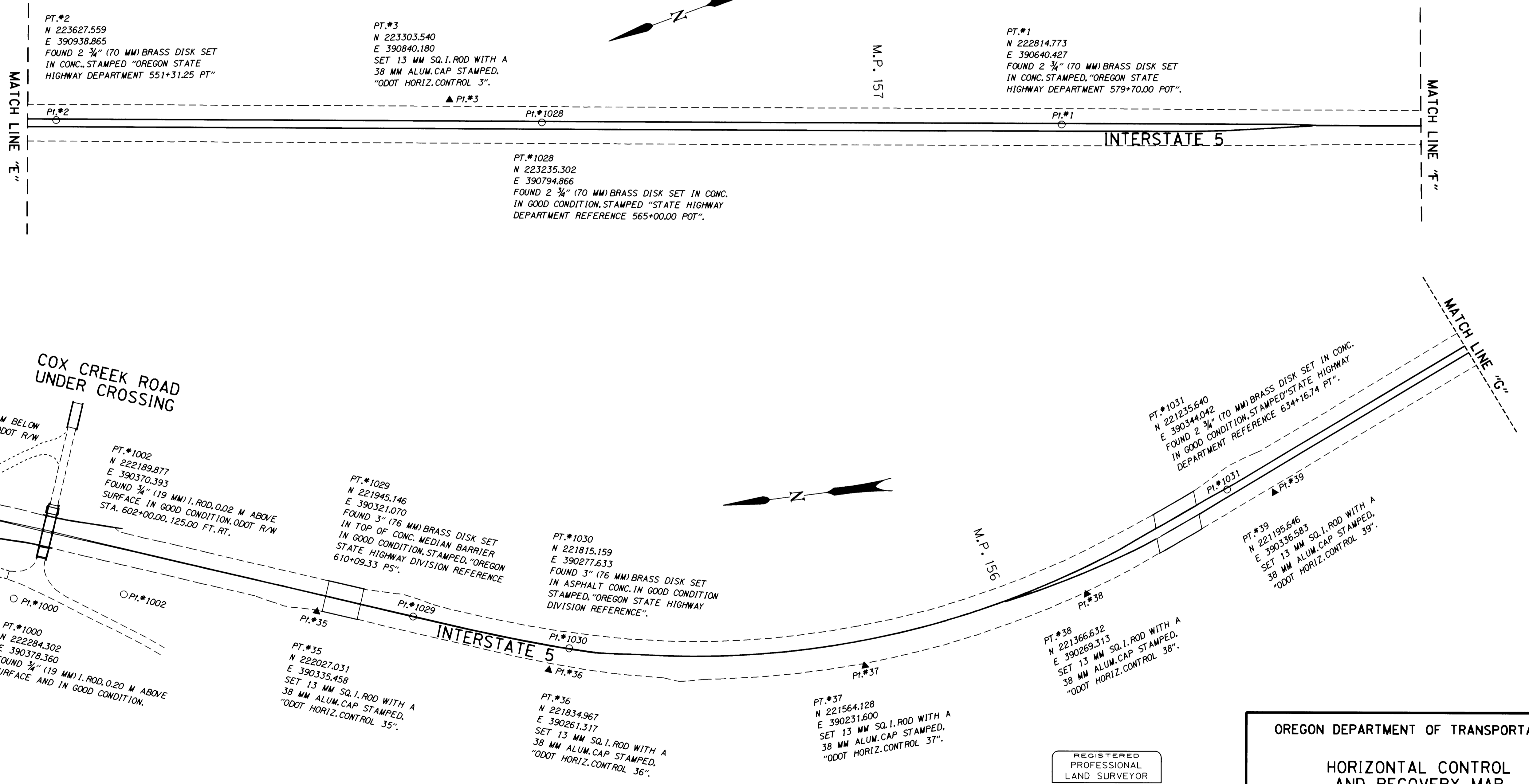
COUNTY SURVEYORS FILE DATA
DO NOT REMOVE FROM OFFICE

HORIZONTAL CONTROL AND RECOVERY MAP FOR THE OREGON DEPARTMENT OF TRANSPORTATION LOCATED IN THE NE 1/4, SE 1/4, & SW 1/4 OF SECTION 19 AND THE NW 1/4 & SW 1/4 OF SECTION 30, T. 22 S., R. 4 W., W.M. DOUGLAS COUNTY

FILED
Date: 6-8-1999 By: J.P.
This survey consists of: 5 PHASES
Map: M129-47D
Narrative:
Corner Rpt:
DOUGLAS COUNTY, OREGON
SURVEYOR



LEGEND	
▲	SET MONUMENT
○	FOUND MONUMENT



REGISTERED
PROFESSIONAL
LAND SURVEYOR
Christine V. Blevins
OREGON
JULY 19, 1994
CHRISTINE V. BLEVINS
2669
EXPIRES: DEC. 31, 1999

OREGON DEPARTMENT OF TRANSPORTATION

HORIZONTAL CONTROL
AND RECOVERY MAP

ANLAUF INT. - ELKHEAD INT.
INTERSTATE 5

3500 STEWART PARKWAY, SUITE 140
ROSEBURG, OREGON 97470