

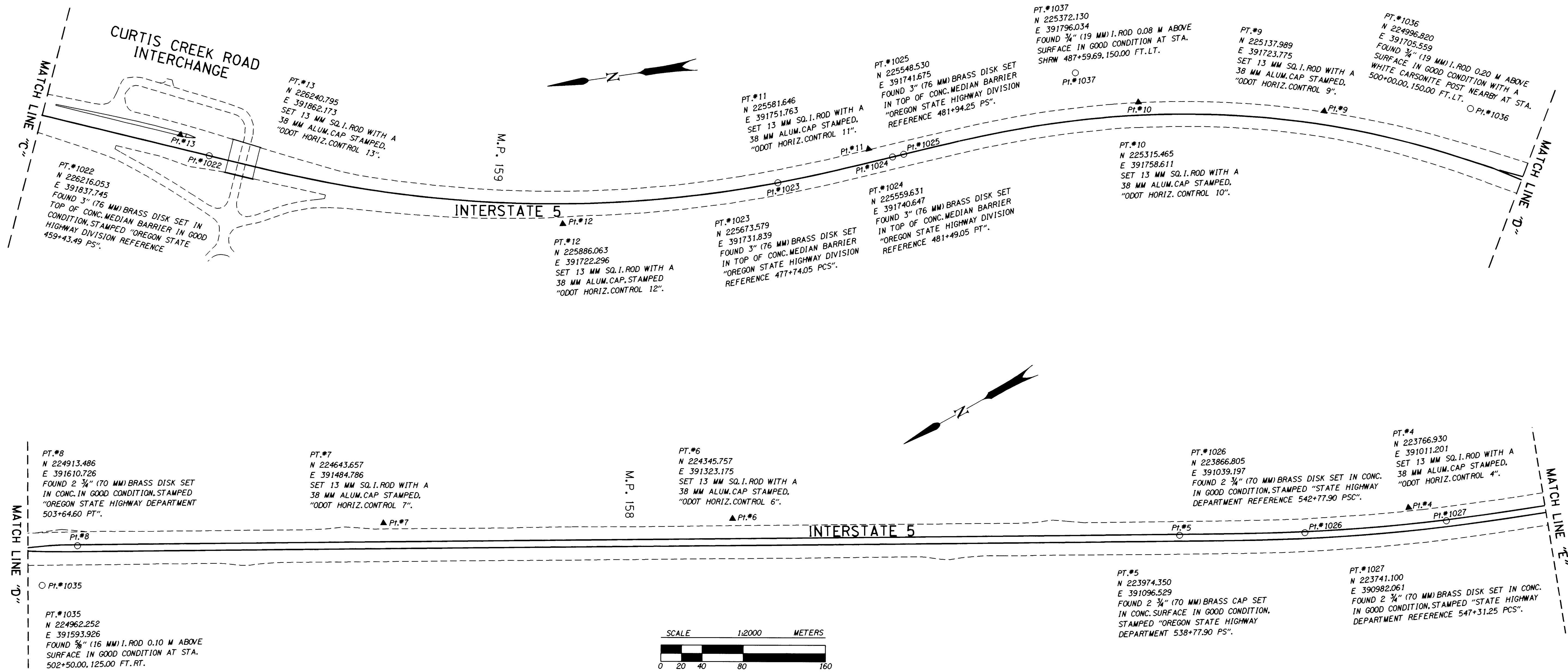


COUNTY SURVEYORS FILE DATA
DO NOT REMOVE FROM OFFICE

HORIZONTAL CONTROL AND RECOVERY MAP FOR THE OREGON DEPARTMENT OF TRANSPORTATION

LOCATED IN THE NW 1/4 & SW 1/4 OF SECTION 8, THE NW 1/4 & SW 1/4 OF SECTION 17,
THE SE 1/4 OF SECTION 18, AND THE NE 1/4 OF SECTION 19, T. 22 S., R. 4 W., W.M.
DOUGLAS COUNTY

FILED
Date: 6-8-1999 By: JLP
This survey consists of: 5 Pages
Map: M129-47C
Narrative: _____
Corner Rpt: _____
DOUGLAS COUNTY
J.P. SURVEYOR



LEGEND
▲ SET MONUMENT
○ FOUND MONUMENT

REGISTERED PROFESSIONAL LAND SURVEYOR
Christine V. Blevins
OREGON JULY 19, 1994
CHRISTINE V. BLEVINS 2669
EXPIRES: DEC. 31, 1999

OREGON DEPARTMENT OF TRANSPORTATION
HORIZONTAL CONTROL AND RECOVERY MAP
ANLAUF INT. - ELKHEAD INT. INTERSTATE 5
3500 STEWART PARKWAY, SUITE 140
ROSEBURG, OREGON 97470