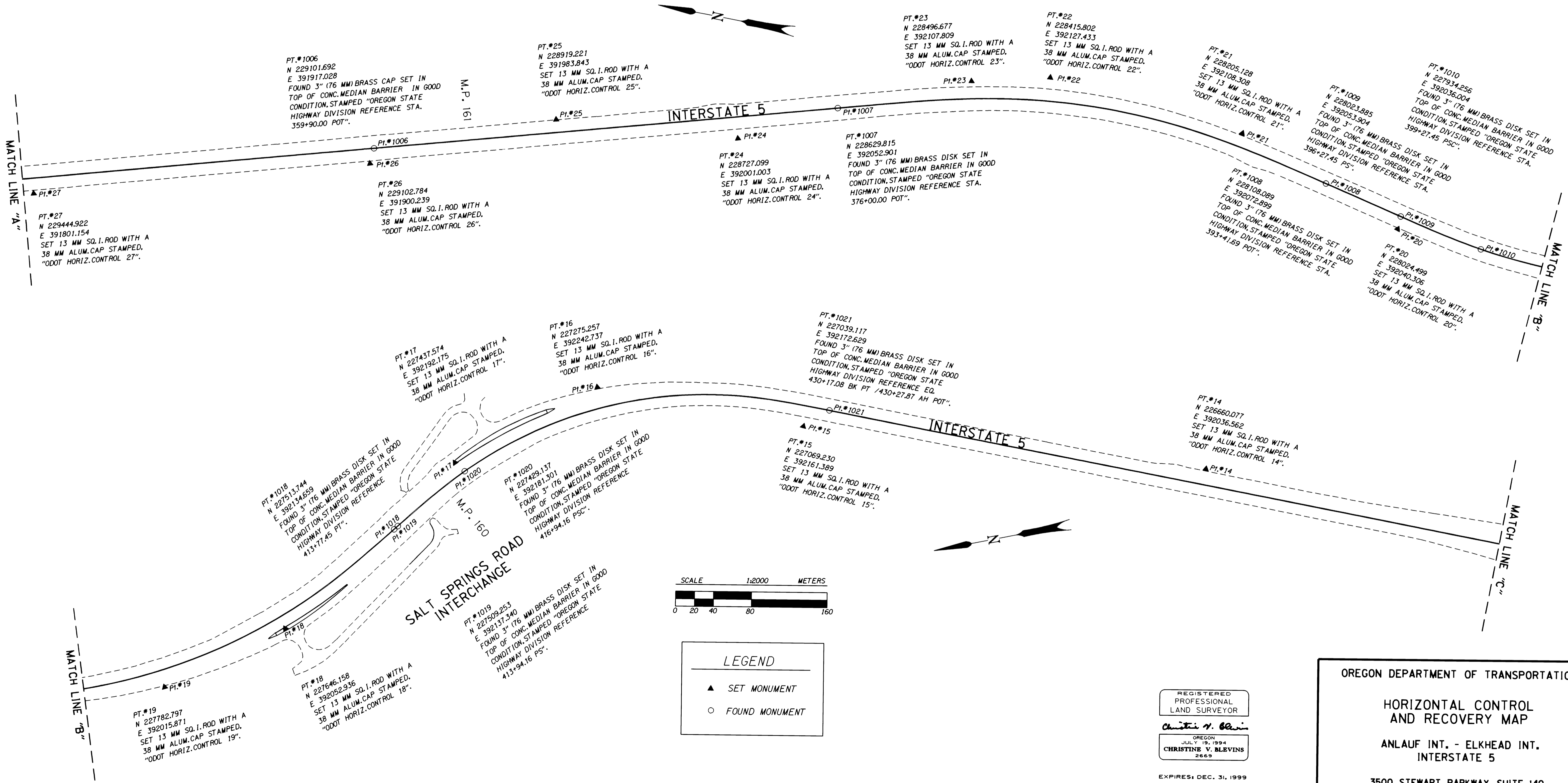


COUNTY SURVEYORS FILE DATA  
DO NOT REMOVE FROM OFFICE

# HORIZONTAL CONTROL AND RECOVERY MAP FOR THE OREGON DEPARTMENT OF TRANSPORTATION LOCATED IN NW 1/4 & SW 1/4 OF SECTION 32, T. 21 S., R. 4 W., W.M. AND THE NW 1/4, SW 1/4, & SE 1/4 OF SECTION 5 & THE NW 1/4 OF SECTION 8, T. 22 S., R. 4 W., W.M. DOUGLAS COUNTY

FILED  
Date: 6-8-1999 By: J.P.  
This survey consists of: 5 Plans  
Map: M129-47B  
Narrative: \_\_\_\_\_  
Corner Rpt: \_\_\_\_\_  
DOUGLAS COUNTY, OR  
JP SURVEYOR



**LEGEND**

- ▲ SET MONUMENT
- FOUND MONUMENT

REGISTERED  
PROFESSIONAL  
LAND SURVEYOR

*Christine W. Blewins*

OREGON  
JULY 19, 1994  
CHRISTINE W. BLEWINS  
2669

EXPIRES: DEC. 31, 1999

OREGON DEPARTMENT OF TRANSPORTATION

HORIZONTAL CONTROL  
AND RECOVERY MAP

ANLAUF INT. - ELKHEAD INT.  
INTERSTATE 5

3500 STEWART PARKWAY, SUITE 140  
ROSEBURG, OREGON 97470