

COUNTY SURVEYORS FILE DATA
DO NOT REMOVE FROM OFFICE

HORIZONTAL CONTROL AND RECOVERY MAP FOR THE OREGON DEPARTMENT OF TRANSPORTATION LOCATED IN THE SE 1/4 OF SECTION 30, THE NE 1/4 OF SECTION 31, AND THE NW 1/4 OF SECTION 32, T. 21 S., R. 4 W., W.M. DOUGLAS COUNTY

FILED
Date: 6-8-1999 By: JP
This survey consists of: 5 Plans
Map: M129-47A
Narrative: _____
Corner Rpt: _____
DOUGLAS COUNTY, OREGON
SURVEYOR

SURVEY NARRATIVE

THE PURPOSE OF THIS METRIC SURVEY WAS TO ESTABLISH HORIZONTAL CONTROL FOR AN OREGON DEPARTMENT OF TRANSPORTATION PROJECT CALLED "ANLAUF INTERCHANGE - ELKHEAD INTERCHANGE" ALONG INTERSTATE 5. THE SURVEY WAS CONDUCTED BETWEEN NOVEMBER 9, 1995 AND FEBRUARY 13, 1996. THE ORIGINAL FIELD NOTES ARE CONTAINED IN BOOK #3623, ARCHIVED IN THE ROADWAY ENGINEERING SECTION OF ODOT IN SALEM, OREGON.

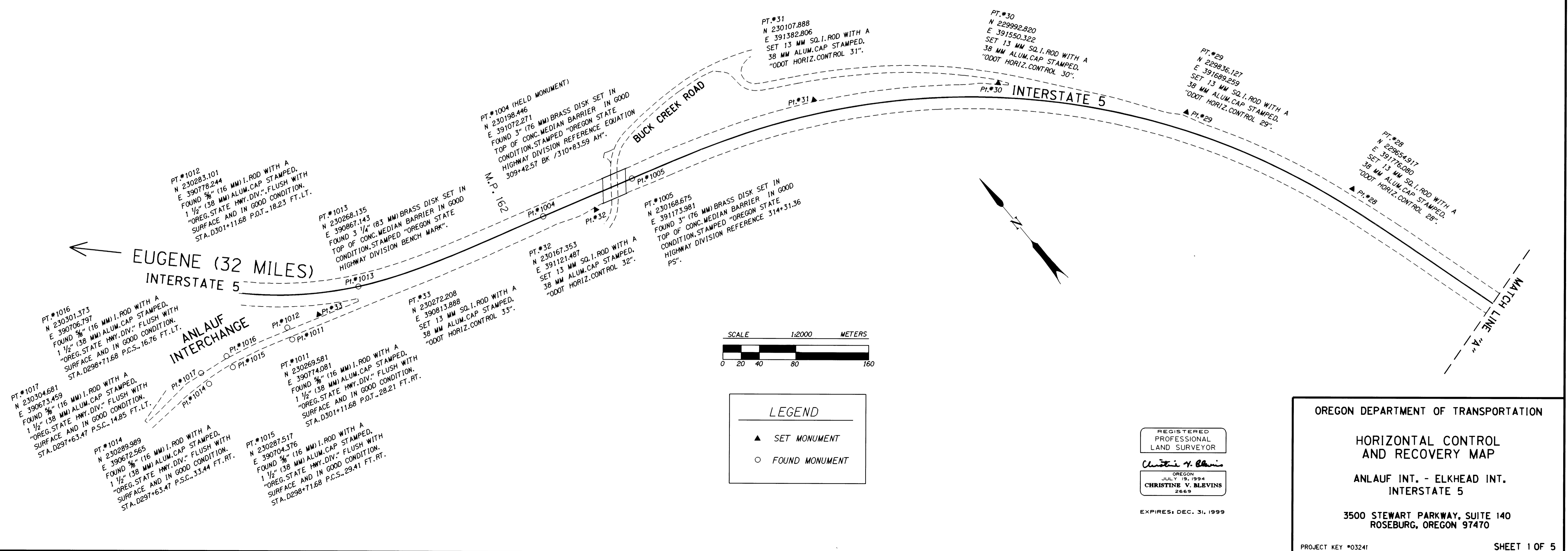
THE CONTROL NETWORK POINTS CONSISTS OF BOTH FOUND AND SET MONUMENTS (SEE DESCRIPTIONS AT EACH POINT LOCATION). AN ORANGE CARSONITE WITNESS POST WAS SET AT EACH NETWORK POINT. THE BASIS OF BEARING IS THE RECORD COURSE FROM CENTERLINE POINTS AT ENGLISH CONSTRUCTION STATION 309+42.57 BK.+310+83.59 AH. (POINT 1004, HELD) AND THE RIGHT OF WAY STATION 610+09.33 P.S. (POINT 1029) TAKEN FROM ODOT RIGHT OF WAY DRAWING NOS. 7B-13-5 AND 7B-13-6, AND THE AS-CONSTRUCTED PLANS #12V-72. COORDINATES ARE ASSUMED AND ARE ON A LOCAL DATUM PLANE WHERE MEASUREMENTS REPRESENT TRUE GROUND DISTANCES. TO CONVERT METRIC COORDINATES TO ENGLISH DIVIDE BY 0.3048.

THE NETWORK WAS ADJUSTED USING LEAST SQUARES. THIS ADJUSTMENT PRODUCED ANGULAR RESIDUALS (THE AMOUNT THE FIELD OBSERVED ANGLES WERE CHANGED DUE TO THE ADJUSTMENT) OF NO GREATER THAN 3 SECONDS; AND, DISTANCE RESIDUALS (THE AMOUNT THE FIELD OBSERVED DISTANCES WERE CHANGED DUE TO ADJUSTMENTS) OF NO GREATER THAN 3 MM, EXCEPT FOR ONE RESIDUAL OF 8 MM. THERE IS A 95% PROBABILITY THAT THE FINAL POSITIONS OF THE CONTROL POINTS ARE WITHIN THE ERROR ELLIPSES AS SHOWN ON THE ERROR ANALYSIS TABLE (SHOWN ON THIS SHEET).

ERROR ANALYSIS

POINT	STANDARD DEVIATIONS		STANDARD ERROR ELLIPSE		
	NORTH	EAST	SEMI MAJOR	SEMI MINOR	ORIENTATION
34	0.002	0.006	0.006	0.001	S 71°06'29"E
3	0.001	0.002	0.002	0.001	S 71°11'40"E
4	0.001	0.001	0.001	0.001	S 63°14'47"E
5	0.001	0.003	0.003	0.001	S 65°46'23"E
6	0.004	0.006	0.007	0.001	S 61°09'58"E
7	0.005	0.010	0.011	0.001	S 61°12'27"E
8	0.007	0.013	0.015	0.001	S 62°10'17"E
9	0.008	0.016	0.018	0.001	S 62°25'30"E
10	0.009	0.019	0.020	0.001	S 64°38'14"E
11	0.009	0.023	0.024	0.002	S 69°38'53"E
12	0.008	0.029	0.030	0.004	S 75°07'41"E
13	0.011	0.036	0.038	0.003	S 74°06'50"E
14	0.015	0.046	0.049	0.003	S 72°42'08"E
15	0.018	0.057	0.060	0.003	S 72°46'17"E
16	0.020	0.063	0.066	0.003	S 72°22'18"E
17	0.019	0.068	0.070	0.004	S 74°40'28"E
18	0.016	0.074	0.075	0.007	S 79°05'54"E
19	0.015	0.078	0.079	0.008	S 80°38'09"E
20	0.015	0.086	0.087	0.008	S 81°12'43"E
21	0.017	0.092	0.093	0.007	S 80°33'47"E
22	0.017	0.099	0.100	0.008	S 80°59'41"E

POINT	STANDARD DEVIATIONS		STANDARD ERROR ELLIPSE		
	NORTH	EAST	SEMI MAJOR	SEMI MINOR	ORIENTATION
23	0.017	0.102	0.103	0.008	S 81°39'32"E
24	0.015	0.110	0.110	0.010	S 84°22'28"E
25	0.015	0.117	0.117	0.011	S 85°09'55"E
26	0.014	0.124	0.124	0.013	S 87°01'05"E
27	0.015	0.137	0.137	0.015	S 89°10'41"E
28	0.015	0.145	0.145	0.015	S 89°46'26"E
29	0.017	0.152	0.152	0.017	N 88°45'12"E
30	0.021	0.159	0.159	0.019	N 86°35'16"E
31	0.028	0.163	0.164	0.022	N 84°04'57"E
32	0.040	0.166	0.168	0.028	N 80°10'57"E
33	0.055	0.170	0.176	0.035	N 75°41'19"E
35	0.005	0.011	0.012	0.001	S 68°06'38"E
36	0.006	0.014	0.015	0.001	S 68°15'27"E
37	0.006	0.019	0.020	0.002	S 72°05'22"E
38	0.006	0.022	0.023	0.002	S 76°46'27"E
39	0.005	0.026	0.026	0.003	S 81°29'30"E
40	0.005	0.032	0.032	0.005	S 89°53'45"E
41	0.006	0.037	0.037	0.005	N 86°41'15"E
42	0.007	0.044	0.044	0.006	N 84°35'22"E
43	0.007	0.049	0.049	0.005	N 85°43'15"E
44	0.005	0.058	0.058	0.005	S 89°53'05"E



OREGON DEPARTMENT OF TRANSPORTATION

HORIZONTAL CONTROL AND RECOVERY MAP

ANLAUF INT. - ELKHEAD INT. INTERSTATE 5

3500 STEWART PARKWAY, SUITE 140
ROSEBURG, OREGON 97470

PROJECT KEY #03241 SHEET 1 OF 5

REGISTERED PROFESSIONAL LAND SURVEYOR

Christine V. Blevins

OREGON JULY 19, 1994
CHRISTINE V. BLEVINS
2669

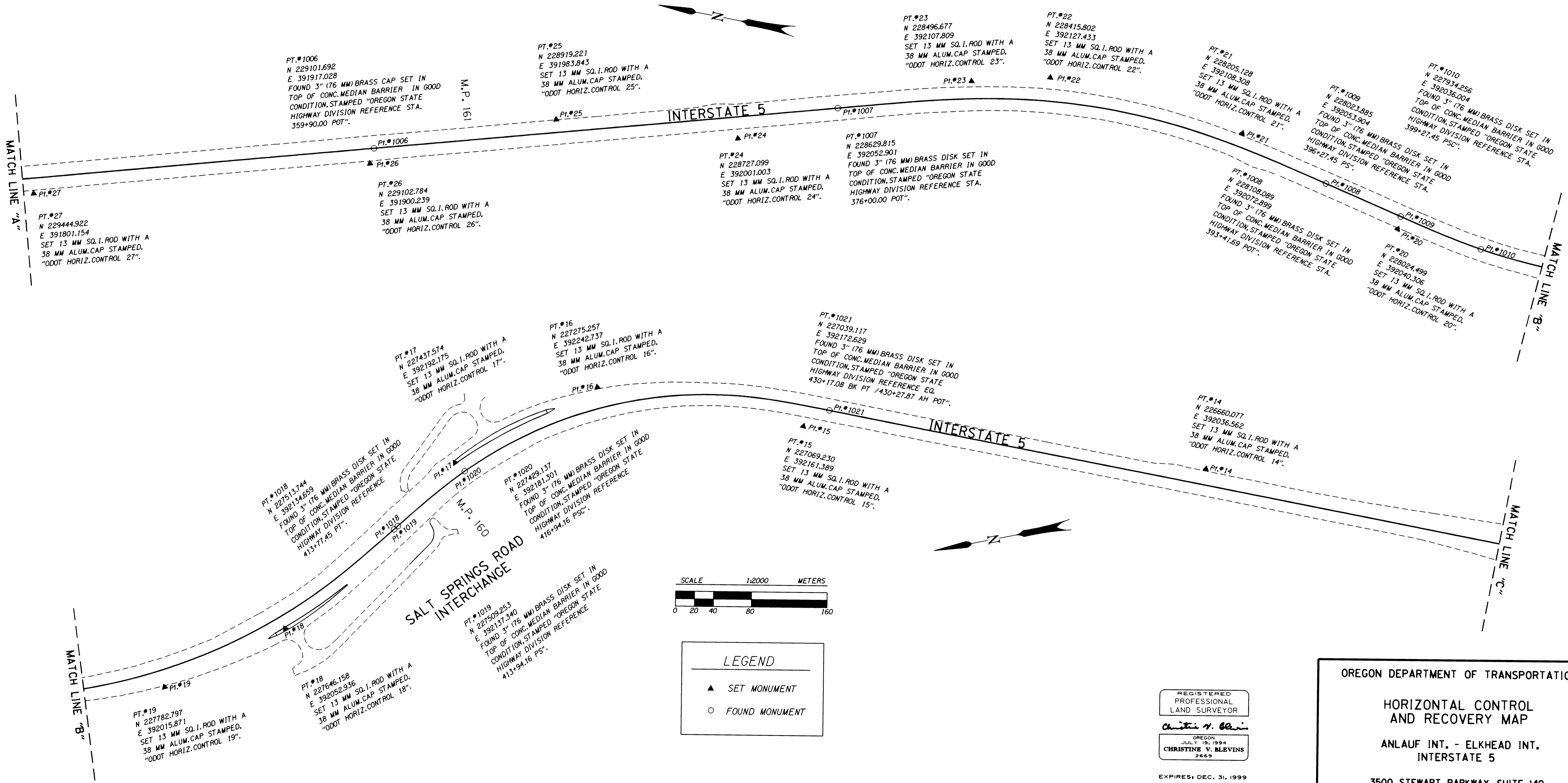
EXPIRES: DEC. 31, 1999



COUNTY SURVEYORS FILE DATA
DO NOT REMOVE FROM OFFICE

HORIZONTAL CONTROL AND RECOVERY MAP FOR THE OREGON DEPARTMENT OF TRANSPORTATION LOCATED IN NW 1/4 & SW 1/4 OF SECTION 32, T. 21 S., R. 4 W., W.M. AND THE NW 1/4, SW 1/4, & SE 1/4 OF SECTION 5 & THE NW 1/4 OF SECTION 8, T. 22 S., R. 4 W., W.M. DOUGLAS COUNTY

FILED
Date: 6-8-1999 By: J.P.
This survey consists of: 5 Plans
Map: M129-47B
Narrative: _____
Corner Rpt: _____
DOUGLAS COUNTY, OR
JP SURVEYOR



LEGEND

- ▲ SET MONUMENT
- FOUND MONUMENT

REGISTERED
PROFESSIONAL
LAND SURVEYOR

Christine W. Blewins

OREGON
JULY 19, 1994
CHRISTINE W. BLEWINS
2669

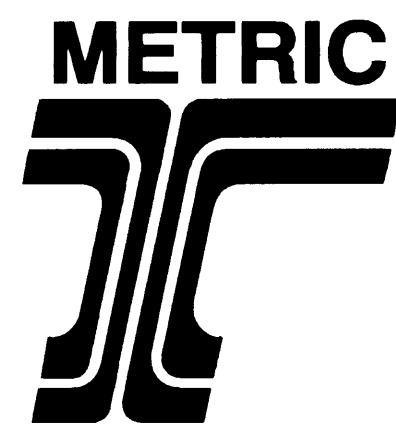
EXPIRES: DEC. 31, 1999

OREGON DEPARTMENT OF TRANSPORTATION

**HORIZONTAL CONTROL
AND RECOVERY MAP**

ANLAUF INT. - ELKHEAD INT.
INTERSTATE 5

3500 STEWART PARKWAY, SUITE 140
ROSEBURG, OREGON 97470

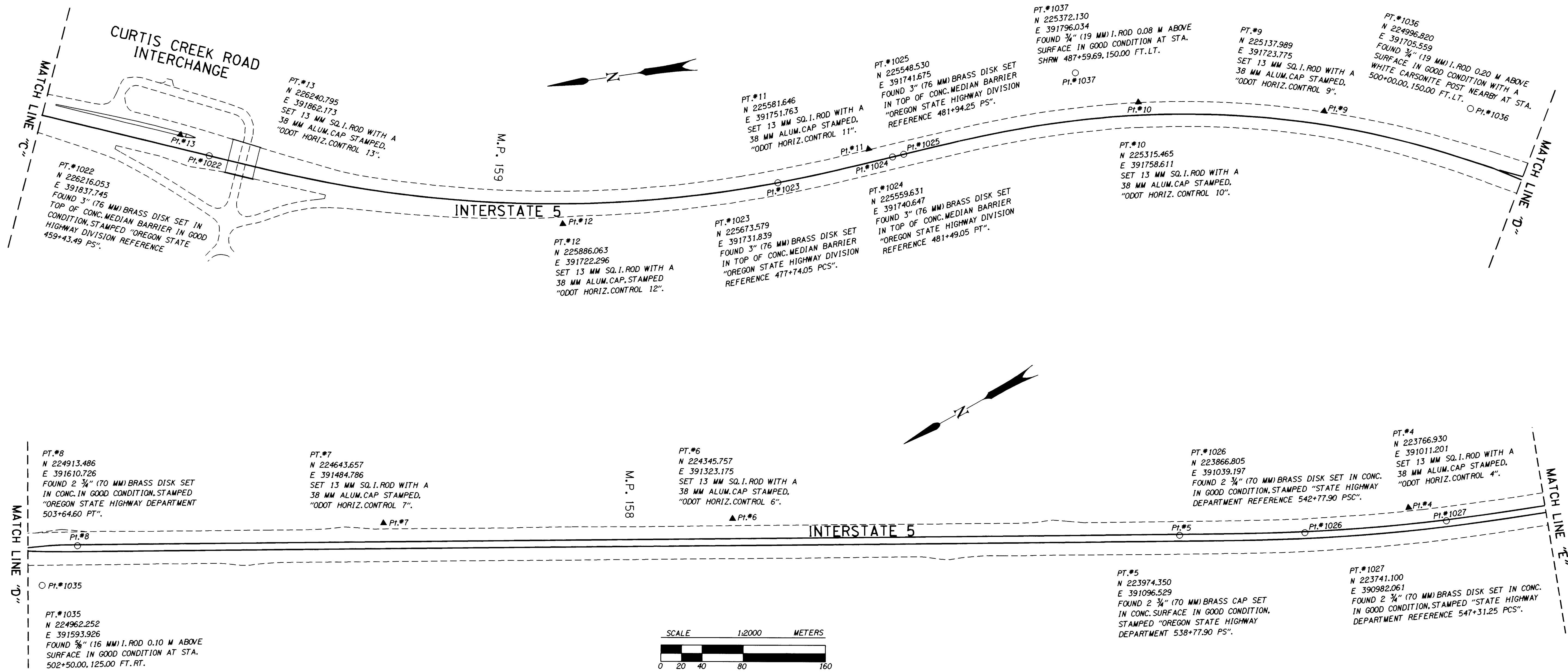


COUNTY SURVEYORS FILE DATA
DO NOT REMOVE FROM OFFICE

HORIZONTAL CONTROL AND RECOVERY MAP FOR THE OREGON DEPARTMENT OF TRANSPORTATION

LOCATED IN THE NW 1/4 & SW 1/4 OF SECTION 8, THE NW 1/4 & SW 1/4 OF SECTION 17,
THE SE 1/4 OF SECTION 18, AND THE NE 1/4 OF SECTION 19, T. 22 S., R. 4 W., W.M.
DOUGLAS COUNTY

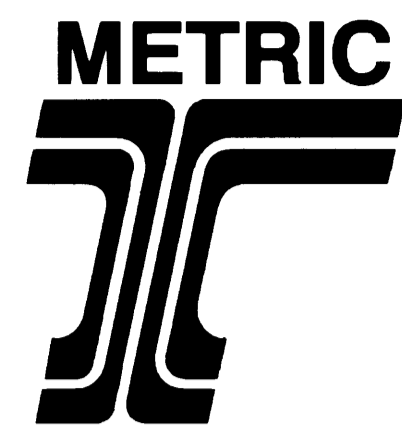
FILED
Date: 6-8-1999 By: JLP
This survey consists of: 5 Pages
Map: M129-47C
Narrative: _____
Corner Rpt: _____
DOUGLAS COUNTY, OR
J.P. SURVEYOR



LEGEND
▲ SET MONUMENT
○ FOUND MONUMENT

REGISTERED PROFESSIONAL LAND SURVEYOR
Christine V. Blevins
OREGON JULY 19, 1994
CHRISTINE V. BLEVINS 2669
EXPIRES: DEC. 31, 1999

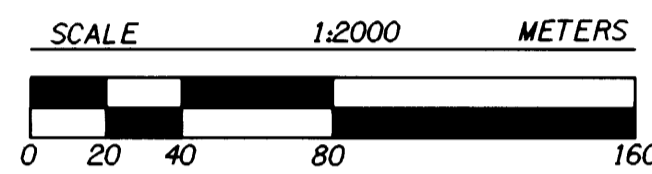
OREGON DEPARTMENT OF TRANSPORTATION
HORIZONTAL CONTROL AND RECOVERY MAP
ANLAUF INT. - ELKHEAD INT. INTERSTATE 5
3500 STEWART PARKWAY, SUITE 140
ROSEBURG, OREGON 97470



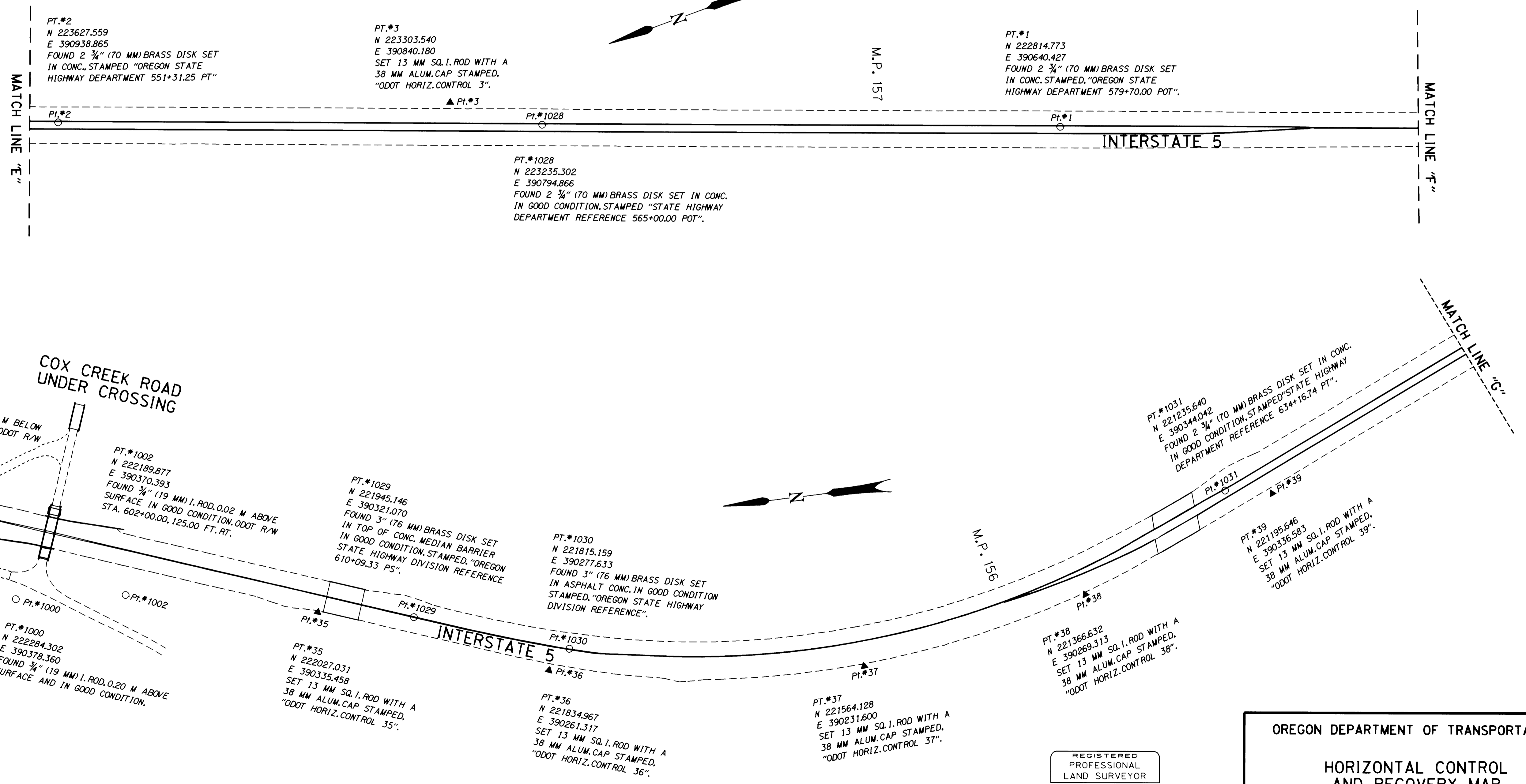
COUNTY SURVEYORS FILE DATA
DO NOT REMOVE FROM OFFICE

HORIZONTAL CONTROL AND RECOVERY MAP FOR THE OREGON DEPARTMENT OF TRANSPORTATION LOCATED IN THE NE 1/4, SE 1/4, & SW 1/4 OF SECTION 19 AND THE NW 1/4 & SW 1/4 OF SECTION 30, T. 22 S., R. 4 W., W.M. DOUGLAS COUNTY

FILED
Date: 6-8-1999 By: J.P.
This survey consists of: 5 PHASES
Map: M129-47D
Narrative:
Corner Rpt:
DOUGLAS COUNTY, OREGON
SURVEYOR



LEGEND	
▲	SET MONUMENT
○	FOUND MONUMENT



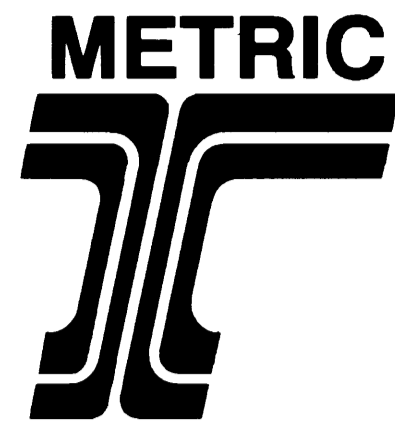
REGISTERED
PROFESSIONAL
LAND SURVEYOR
Christine V. Blevins
OREGON
JULY 19, 1994
CHRISTINE V. BLEVINS
2669
EXPIRES: DEC. 31, 1999

OREGON DEPARTMENT OF TRANSPORTATION

HORIZONTAL CONTROL
AND RECOVERY MAP

ANLAUF INT. - ELKHEAD INT.
INTERSTATE 5

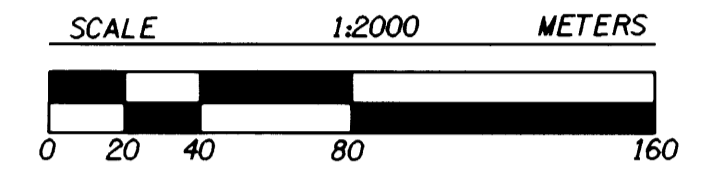
3500 STEWART PARKWAY, SUITE 140
ROSEBURG, OREGON 97470



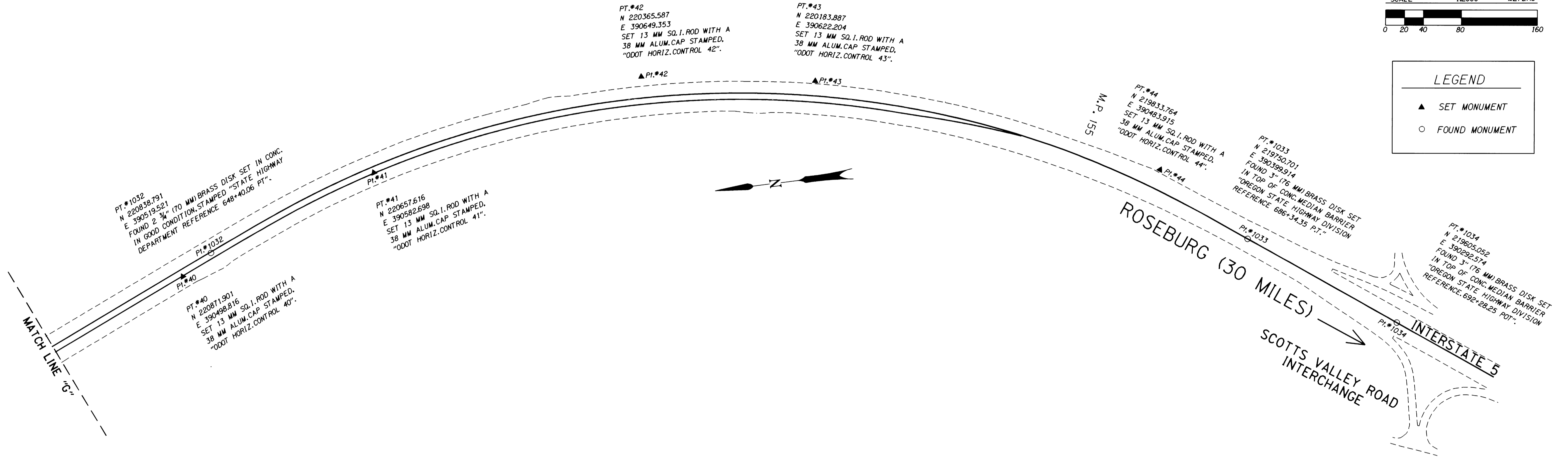
COUNTY SURVEYORS FILE DATA
DO NOT REMOVE FROM OFFICE

HORIZONTAL CONTROL AND RECOVERY MAP FOR THE OREGON DEPARTMENT OF TRANSPORTATION LOCATED IN THE SE 1/4 OF SECTION 30 AND THE NE 1/4, SE 1/4, & SW 1/4 OF SECTION 31, T. 22 S., R. 4 W., W.M. DOUGLAS COUNTY

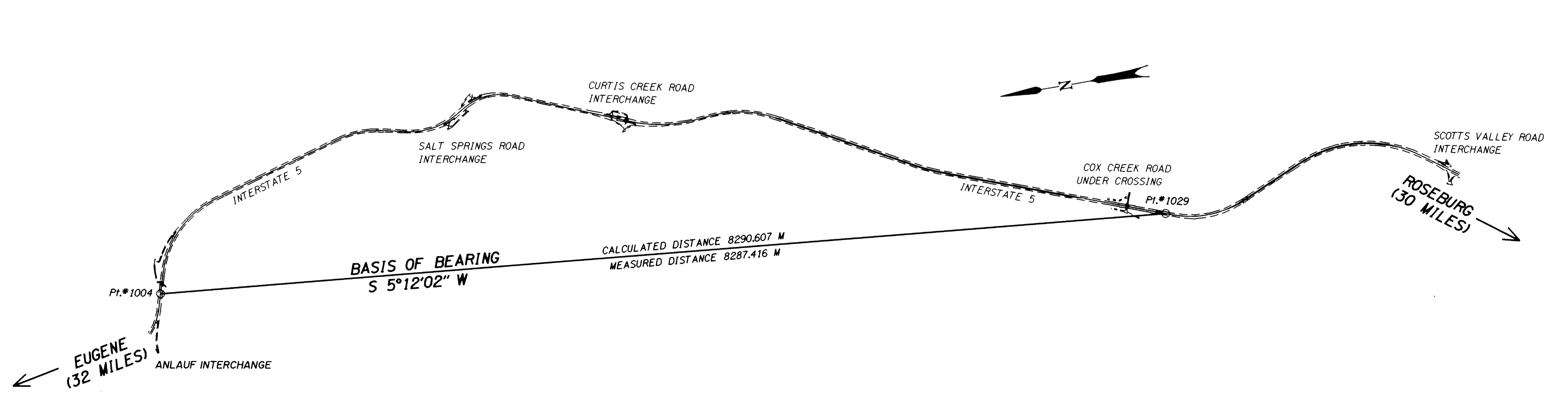
FILED
Date: 6-8-1999 By: J.P.
This survey consists of: 5 PAGES
Map: M129-47E
Narrative: _____
Corner Pkt: _____
DOUGLAS COUNTY SURVEYOR



LEGEND	
▲	SET MONUMENT
○	FOUND MONUMENT



BASIS OF BEARING NOT TO SCALE



REGISTERED
PROFESSIONAL
LAND SURVEYOR

Christine V. Blevins

OREGON
JULY 19, 1994
CHRISTINE V. BLEVINS
2669

EXPIRES: DEC. 31, 1999

OREGON DEPARTMENT OF TRANSPORTATION

HORIZONTAL CONTROL
AND RECOVERY MAP

ANLAUF INT. - ELKHEAD INT.
INTERSTATE 5

3500 STEWART PARKWAY, SUITE 140
ROSEBURG, OREGON 97470