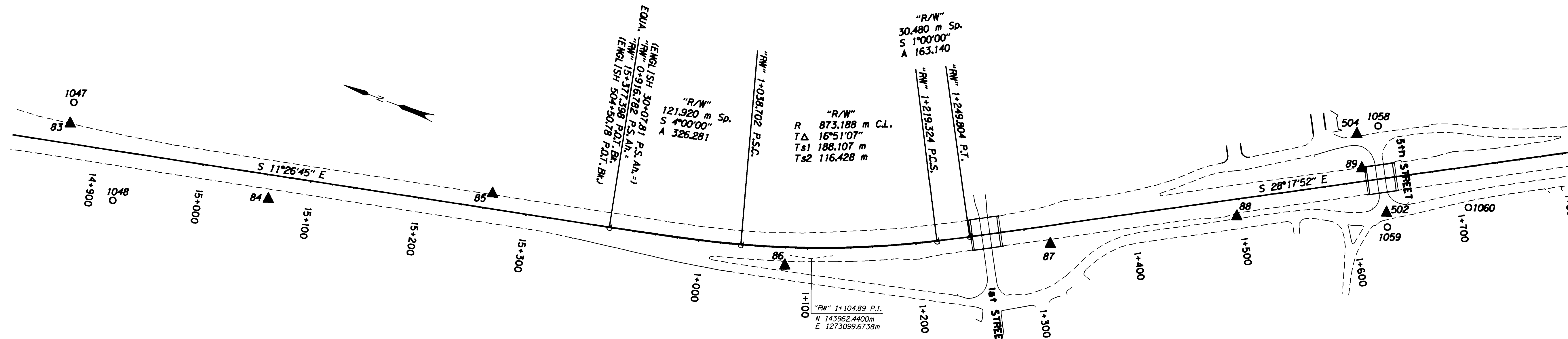


HORIZONTAL CONTROL, RECOVERY AND RETRACEMENT MAP

FOR THE OREGON DEPARTMENT OF TRANSPORTATION

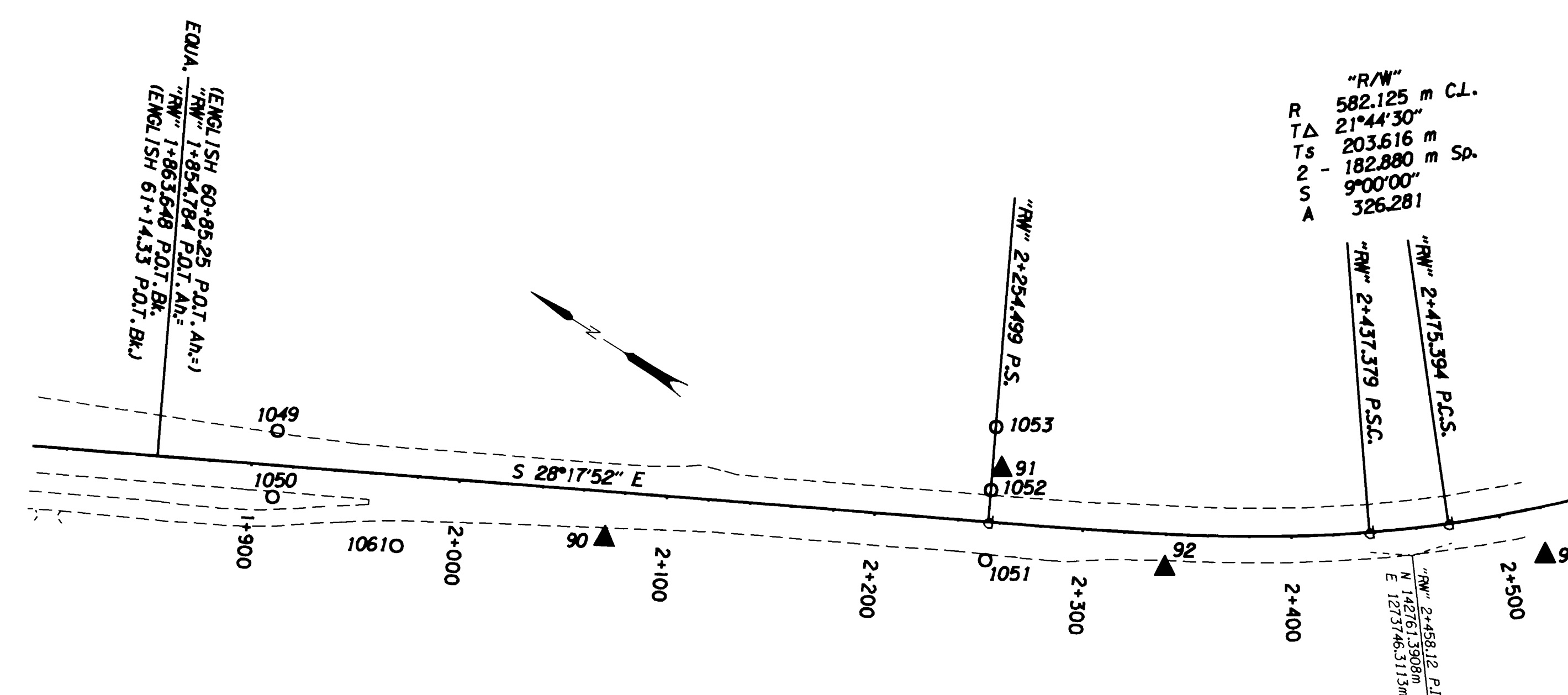
LOCATED IN THE NW 1/4 & SW 1/4 OF SECTION 27 AND THE NW 1/4, NE 1/4, & SE 1/4 OF SECTION 34, T. 30 S., R. 5 W., W.M.

FILED
 Date: 4-23-1999 By: JP
 This survey consists of: 11 Pgs.
 Map: M129-39K
 Narrative: (CS 65/11)
 (previously filed control reports)
 DOUGLAS COUNTY SURVEYOR



CONTROL NETWORK AND FOUND MONUMENTS

POINT	DESCRIPTION	NORTHING	EASTING	ELEV.
1047	FOUND 5/8" (16 MM) I.R. 100 MM BELOW SURFACE, R/W STA. 488+00.00 P.O.T. 38.10 M (125.00 FT.) LT. (GOOD CONDITION)	144648.244	1272999.677	
1048	FOUND 3/8" (16 MM) REBAR 100 MM ABOVE SURFACE. (GOOD CONDITION)	144583.301	1272927.340	
1049	FOUND 5/8" (16 MM) I.R. WITH A 1 1/2" (38 MM) DIA. ALUM. CAP STAMPED "OREG. STATE HWY. DIV." SET IN CONCRETE FLUSH WITH SURFACE, A WITNESS POST AND PADDLE BOARD NEARBY MARKED "SHRW P.O.T. LC 62+69.66" 16.76 M (55 FT.) LT. (GOOD CONDITION)	143250.980	1273501.759	234.397
1050	FOUND 5/8" (16 MM) I.R. SET IN CONCRETE. THE ROD IS BENT TO THE SOUTH, FLUSH WITH SURFACE AND THE CAP IS MISSING. A WITNESS POST AND PADDLE BOARD NEARBY MARKED "SHRW P.O.T. LC 62+69.66" 15.24 M (50 FT.) RT. (POOR CONDITION)	143235.807	1273473.580	234.265
1051	FOUND 5/8" (16 MM) I.R. WITH A 1 1/2" (38 MM) DIA. ALUM. CAP STAMPED "OREG. STATE HWY. DIV." SET IN CONCRETE, 30 MM BELOW SURFACE AT STA. 73+96.65 P.S. 18.29 M (60 FT.) RT. (GOOD CONDITION)	142932.021	1273633.673	
1052	FOUND 5/8" (16 MM) I.R. WITH A 1 1/2" (38 MM) DIA. ALUM. CAP STAMPED "OREG. STATE HWY. DIV." SET IN CONCRETE, 30 MM BELOW SURFACE AT STA. 73+96.65 P.S. 15.24 M (50 FT.) LT. (GOOD CONDITION)	142947.885	1273663.215	
1053	FOUND 5/8" (16 MM) I.R. 30 MM ABOVE SURFACE. A WITNESS POST AND PADDLE BOARD NEARBY MARKED "SHRW P.S. L 73+96.65 150.00 LT." (45.72 M LT.) (GOOD CONDITION)	142962.315	1273690.051	
1058	FOUND 5/8" (16 MM) I. REBAR 60 MM ABOVE SURFACE. (GOOD CONDITION)	143516.035	1273395.236	
1059	FOUND 1" (25 MM) I. PIPE 110 MM ABOVE SURFACE. (GOOD CONDITION)	143475.685	1273310.766	
1060	FOUND 5/8" (16 MM) REBAR WITH A 1 1/4" (32 MM) PLASTIC CAP STAMPED "R. BROWN PLS 2391" FLUSH WITH SURFACE (GOOD CONDITION)	143412.139	1273353.519	
1061	FOUND 1" (25 MM) I. PIPE 300 MM ABOVE SURFACE. (GOOD CONDITION)	143173.131	1273486.023	
502	SET R.R. SPIKE (PUNCHED) IN ASPHALT CONCRETE AT THE S. CANYONVILLE INTERSECTION ON WEST SIDE OF I-5 FREEWAY.	143481.341	1273324.127	233.004
504	SET 13 MM SQ. I.R. 0.76 M LONG WITH A 38 MM DIA. ALUM. CAP STAMPED "O.D.O.T. HORIZ. CONTROL 504"	143532.157	1273382.686	232.217
83	SET 13 MM SQ. I.R. 0.76 M LONG WITH 38 MM DIA. ALUM. CAP STAMPED "ODOT HORIZ. CONTROL 83"	144645.050	1272981.486	235.291
84	SET 13 MM SQ. I.R. 0.76 M LONG WITH 38 MM DIA. ALUM. CAP STAMPED "ODOT HORIZ. CONTROL 84"	144450.155	1272979.382	240.343



CONTROL NETWORK AND FOUND MONUMENTS

POINT	DESCRIPTION	NORTHING	EASTING	ELEV.
85	SET 13 MM SQ. I.R. 0.76 M LONG WITH 38 MM DIA. ALUM. CAP STAMPED "ODOT HORIZ. CONTROL 85"	144258.770	1273055.612	239.582
86	SET 13 MM SQ. I.R. 0.76 M LONG WITH 38 MM DIA. ALUM. CAP STAMPED "ODOT HORIZ. CONTROL 86"	143983.786	1273086.645	240.551
87	SET 13 MM SQ. I.R. 0.76 M LONG WITH 38 MM DIA. ALUM. CAP STAMPED "ODOT HORIZ. CONTROL 87"	143762.047	1273189.845	238.814
88	SET 13 MM SQ. I.R. 0.76 M LONG WITH 38 MM DIA. ALUM. CAP STAMPED "ODOT HORIZ. CONTROL 88"	143609.329	1273273.252	238.619
89	SET 13 MM SQ. I.R. 0.76 M LONG WITH 38 MM DIA. ALUM. CAP STAMPED "ODOT HORIZ. CONTROL 89"	143517.021	1273354.642	237.983
90	SET 13 MM SQ. I.R. 0.76 M LONG WITH 38 MM DIA. ALUM. CAP STAMPED "ODOT HORIZ. CONTROL 90"	143091.643	1273544.302	235.884
91	SET 13 MM SQ. I.R. 0.76 M LONG WITH 38 MM DIA. ALUM. CAP STAMPED "ODOT HORIZ. CONTROL 91"	142949.857	1273675.553	243.223
92	SET 13 MM SQ. I.R. 0.76 M LONG WITH 38 MM DIA. ALUM. CAP STAMPED "ODOT HORIZ. CONTROL 92"	142858.279	1273678.225	243.315
93	SET 13 MM SQ. I.R. 0.76 M LONG WITH 38 MM DIA. ALUM. CAP STAMPED "ODOT HORIZ. CONTROL 93"	142708.674	1273782.189	247.574

COUNTY SURVEYORS FILE DATA
 DO NOT REMOVE FROM OFFICE

NOTE: ALL COORDINATES ON THIS MAP ARE METRIC, ON A LOCAL DATUM PLANE, WHICH REPRESENTS TRUE GROUND DISTANCES. TO CONVERT COORDINATES TO ENGLISH, DIVIDE THE METRIC COORDINATES BY 0.3048

OREGON DEPARTMENT OF TRANSPORTATION
HORIZONTAL CONTROL, RECOVERY, AND RETRACEMENT MAP
 MYRTLE CREEK - CANYONVILLE SEC. (1-5)
 DOUGLAS COUNTY
 ODOT
 3500 Stewart Parkway, Suite 140
 Roseburg, Oregon 97470

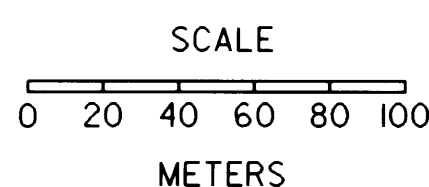
REGISTERED PROFESSIONAL LAND SURVEYOR
 Christine V. Blewins
 OREGON JULY 19, 1994
 CHRISTINE V. BLEVINS 2669

RENEWAL DATE 12-31-99

CHRISTINE V. BLEVINS P.L.S.
 Oregon Department of Transportation
 3500 N.W. Stewart Parkway
 Roseburg, Oregon 97470

LEGEND

- ▲ SET MONUMENT
- FOUND MONUMENT
- ★ FOUND GPS MONUMENT



SCALE: 1:2000