

HORIZONTAL CONTROL, RECOVERY AND RETRACEMENT MAP

FOR THE OREGON DEPARTMENT OF TRANSPORTATION
 LOCATED IN THE NW 1/4, NE 1/4, & SE 1/4 OF SECTION 18, THE SW 1/4 OF SECTION 17, AND THE NE 1/4 OF SECTION 19, T. 30 S., R. 5 W., W.M. DOUGLAS COUNTY

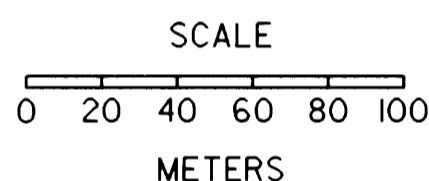
FILED
 Date: 4-23-1999 By: JP
 This survey consists of: 11 Pgs.
 Map: M127-37H
 Narrative:
 Corner Rpt: (CS 45/19)
 (Previously filed control reports)
 DOUGLAS COUNTY SURVEYOR

REGISTERED PROFESSIONAL LAND SURVEYOR
 Christine V. Blewins
 OREGON JULY 19, 1994
 CHRISTINE V. BLEVINS 2669

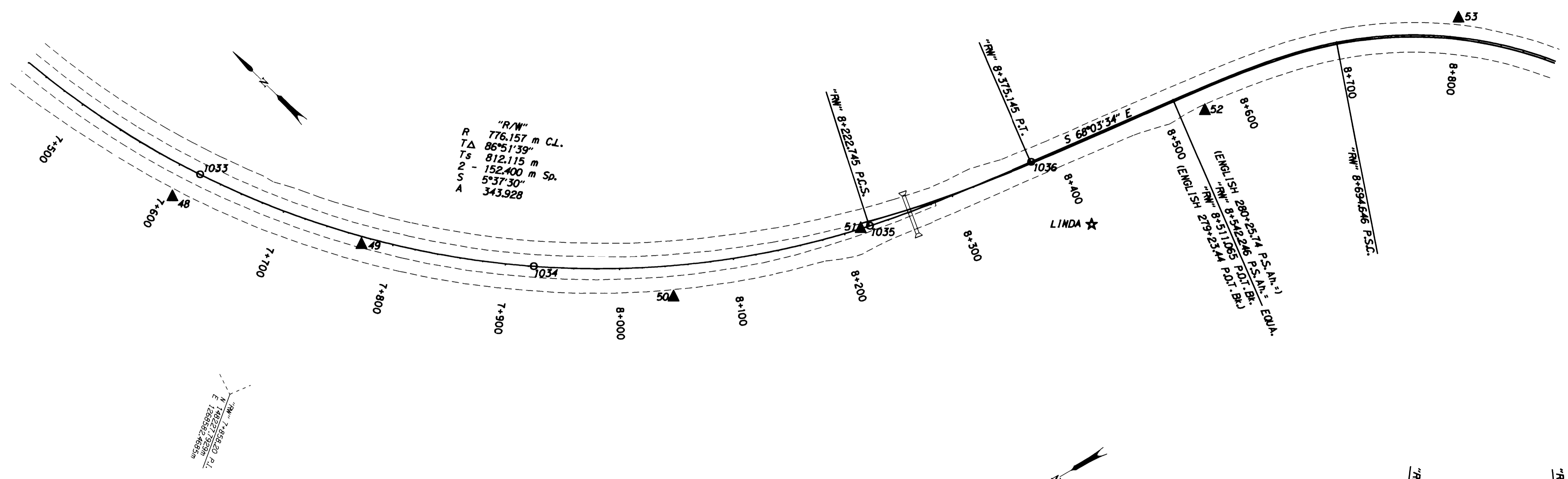
RENEWAL DATE 12-31-99
 CHRISTINE V. BLEVINS P.L.S.
 Oregon Department of Transportation
 3500 N.W. Stewart Parkway
 Roseburg, Oregon 97470

LEGEND

- ▲ SET MONUMENT
- FOUND MONUMENT
- ★ FOUND GPS MONUMENT

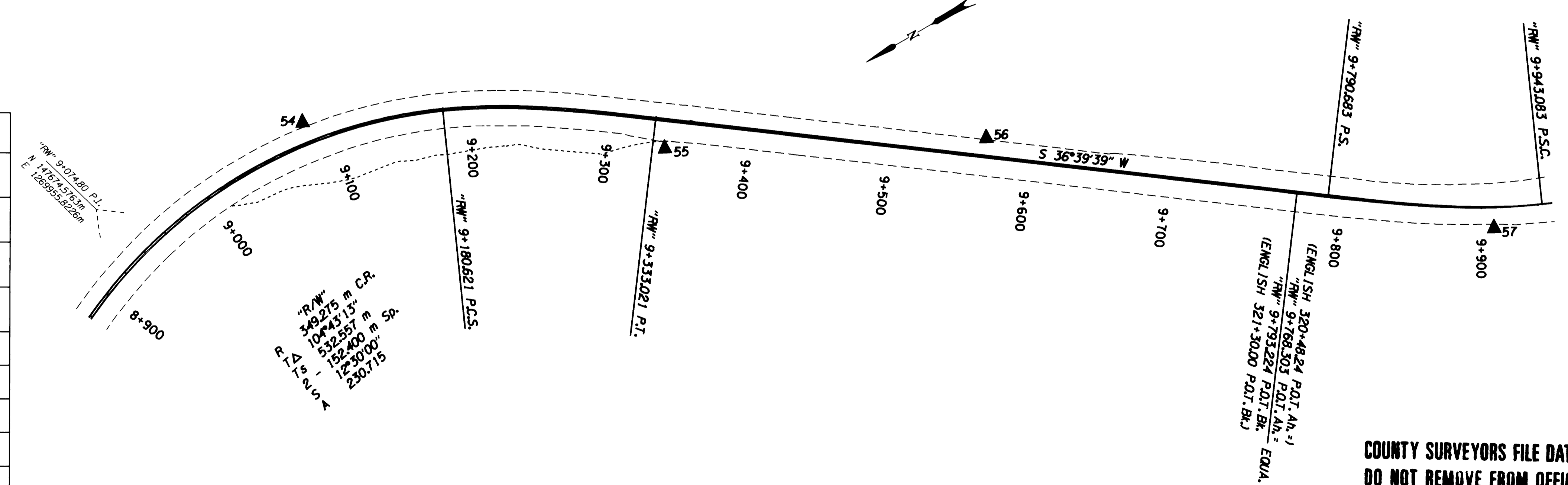


SCALE: 1:2000



CONTROL NETWORK AND FOUND MONUMENTS

POINT	DESCRIPTION	NORTHING	EASTING	ELEV.
1033	FOUND 5/8" (16 MM) I.R. WITH A 1 1/2" (38 MM) DIA. ALUM. CAP STAMPED "OREG. STATE HWY DIV." 0.03 M BELOW SURFACE STA. 250+00.00 (GOOD CONDITION)	148435.020	1268817.194	195.194
1034	FOUND 5/8" (16 MM) I.R. WITH A 1 1/2" (38 MM) DIA. ALUM. CAP STAMPED "OREG. STATE HWY DIV." 0.03 M BELOW SURFACE STA. 260+00.00 (GOOD CONDITION)	148170.488	1268964.992	195.548
1035	FOUND 5/8" (16 MM) I.R. WITH A 1 1/2" (38 MM) DIA. ALUM. CAP STAMPED "OREG. STATE HWY DIV." FLUSH W/SURFACE STA. 269+78.74 P.C.S. (GOOD CONDITION)	147985.704	1269196.789	197.139
1036	FOUND 5/8" (16 MM) I.R. WITH A 1 1/2" (38 MM) DIA. ALUM. CAP STAMPED "OREG. STATE HWY DIV." FLUSH W/SURFACE STA. 274+78.74 P.T. (GOOD CONDITION)	147924.211	1269336.106	197.789
48	SET 13 MM SO. I.R. 0.76 M LONG WITH 38 MM DIA. ALUM. CAP STAMPED "ODOT HORIZ. CONTROL 48"	148439.283	1268786.945	195.644
49	SET 13 MM SO. I.R. 0.76 M LONG WITH 38 MM DIA. ALUM. CAP STAMPED "ODOT HORIZ. CONTROL 49"	148292.086	1268873.204	195.648
50	SET 13 MM SO. I.R. 0.76 M LONG WITH 38 MM DIA. ALUM. CAP STAMPED "ODOT HORIZ. CONTROL 50"	148065.110	1269032.369	196.794
51	SET 13 MM SO. I.R. 0.76 M LONG WITH 38 MM DIA. ALUM. CAP STAMPED "ODOT HORIZ. CONTROL 51"	147990.472	1269190.120	197.352
52	SET 13 MM SO. I.R. 0.76 M LONG WITH 38 MM DIA. ALUM. CAP STAMPED "ODOT HORIZ. CONTROL 52"	147848.102	1269475.553	197.337
53	SET 13 MM SO. I.R. 0.76 M LONG WITH 38 MM DIA. ALUM. CAP STAMPED "ODOT HORIZ. CONTROL 53"	147746.481	1269688.991	200.049
54	SET 13 MM SO. I.R. 0.76 M LONG WITH 38 MM DIA. ALUM. CAP STAMPED "ODOT HORIZ. CONTROL 54"	147466.440	1269762.193	200.129
55	SET 13 MM SO. I.R. 0.76 M LONG WITH 38 MM DIA. ALUM. CAP STAMPED "ODOT HORIZ. CONTROL 55"	147252.372	1269616.948	198.226
56	SET 13 MM SO. I.R. 0.76 M LONG WITH 38 MM DIA. ALUM. CAP STAMPED "ODOT HORIZ. CONTROL 56"	147050.292	1269508.360	198.548
57	SET 13 MM SO. I.R. 0.76 M LONG WITH 38 MM DIA. ALUM. CAP STAMPED "ODOT HORIZ. CONTROL 57"	146769.413	1269271.542	203.896
LINDA	SET 75 MM DIA. BRASS DISK IN CONC. MONUMENT STAMPED "OREGON D.O.T. GEODETIC CONTROL PT. DO NOT DISTURB LINDA" (DCSO CS65/19-1)	147847.805	1269334.012	197.862



COUNTY SURVEYORS FILE DATA
 DO NOT REMOVE FROM OFFICE

OREGON DEPARTMENT OF TRANSPORTATION
 HORIZONTAL CONTROL, RECOVERY,
 AND RETRACEMENT MAP
 MYRTLE CREEK - CANYONVILLE SEC. (1-5)
 DOUGLAS COUNTY

ODOT
 3500 Stewart Parkway, Suite 140
 Roseburg, Oregon 97470

NOTE: ALL COORDINATES ON THIS MAP ARE METRIC, ON A LOCAL DATUM PLANE, WHICH REPRESENTS TRUE GROUND DISTANCES. TO CONVERT COORDINATES TO ENGLISH, DIVIDE THE METRIC COORDINATES BY 0.3048