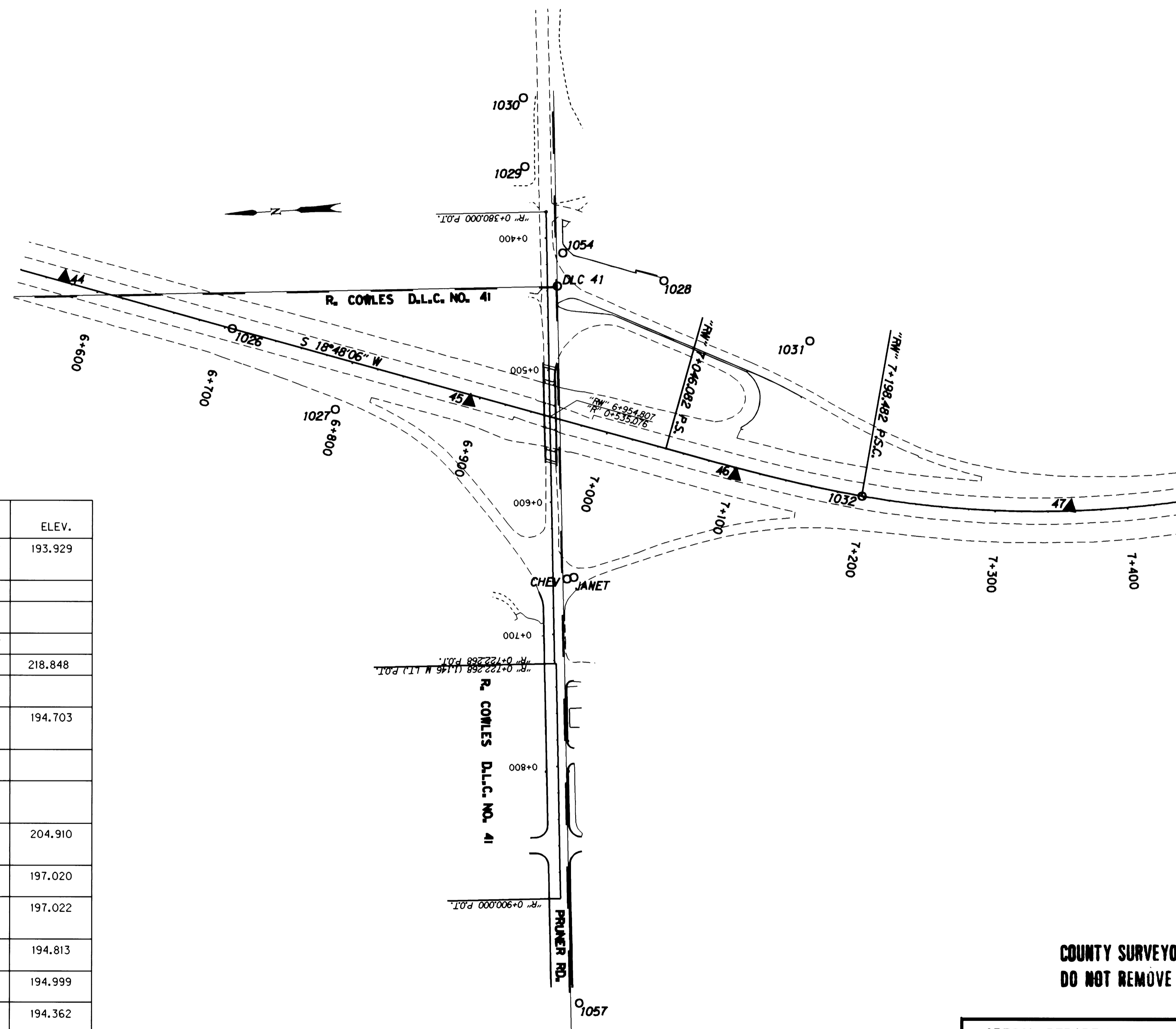


HORIZONTAL CONTROL, RECOVERY AND RETRACEMENT MAP

FOR THE OREGON DEPARTMENT OF TRANSPORTATION
 LOCATED IN THE SE 1/4 & SW 1/4 OF SECTION 7, T.30 S., R. 5 W., W.M.
 DOUGLAS COUNTY

FILED
 Date: 4-29-1999 By: JP
 This survey consists of: 11 Pgs.
 Map: M129-39 G
 Narrative:
 Corner Rpt: (CS 65/19)
 (previously filed control reports)
 DOUGLAS COUNTY
 SURVEYOR



CONTROL NETWORK AND FOUND MONUMENTS

| POINT | DESCRIPTION | NORTHING | EASTING | ELEV. |
|--------|---|------------|-------------|---------|
| 1026 | FOUND 5/8" (16 MM) I.R. WITH A 1 1/2" (38 MM) DIA. ALUM. CAP STAMPED "OREG. STATE HWY DIV." FLUSH W/SURFACE, STA. 220+00.00 (FAIR CONDITION) | 149318.914 | 1268953.952 | 193.929 |
| 1027 | FOUND 3/4" (19 MM) I.R. 0.10 M ABOVE SURFACE. (GOOD CONDITION) | 149244.600 | 1268888.397 | |
| 1028 | FOUND 5/8" (16 MM) I.R., 0.30 M BELOW SURFACE, R/W STA. 230+00.00, 121.92 M (400 FT.) LT. (GOOD CONDITION) | 148991.188 | 1268971.160 | |
| 1029 | FOUND 1" (25 MM) IRON PIPE FLUSH W/SURFACE. (FAIR CONDITION). | 149091.362 | 1269063.757 | |
| 1030 | FOUND 1" (25 MM) IRON PIPE FLUSH W/SURFACE (GOOD CONDITION) | 149089.567 | 1269115.863 | 218.848 |
| 1031 | FOUND 5/8" (16 MM) I.R., FLUSH W/SURFACE, R/W STA. 234+00.00, 106.68 M (350 FT.) LT. (GOOD CONDITION) | 148883.526 | 1268919.325 | |
| 1032 | FOUND 5/8" (16 MM) I.R. WITH A 1 1/2" (38 MM) DIA. ALUM. CAP STAMPED "OREG. STATE HWY DIV." 0.06 M BELOW SURFACE STA. 236+17.31 P.S.C. (GOOD CONDITION) | 148850.636 | 1268799.741 | 194.703 |
| 1054 | FOUND 1" (25 MM) IRON PIPE 0.20 M BELOW SURFACE WITNESS POST NEARBY (GOOD CONDITION) | 149066.475 | 1268996.712 | |
| 1057 | FOUND 5/8" (16 MM) I.R. WITH 32 MM DIA. PLASTIC CAP STAMPED "D. W. BAKER PLS 1978" 0.35 M BELOW SURFACE (GOOD CONDITION) (DCSO 30-05-07) | 149085.446 | 1268429.364 | |
| DLC 41 | FOUND 4 1/4" (108 MM) BRASS DISK FLUSH IN A.C. STAMPED "BEFORE DISTURBING NOTIFY COUNTY SURVEYOR T 30 S SE DLC 41 R 5 W 1959" (GOOD CONDITION) | 149072.094 | 1268971.594 | 204.910 |
| CHEV | FOUND 1 1/2" (38 MM) DIA. ALUM. CAP STAMPED "OREG. STATE HWY DIV. CHEV 1988" FLUSH WITH A.C. (GOOD CONDITION) | 149077.128 | 1268750.241 | 197.020 |
| JANET | FOUND 1 1/2" (38 MM) ALUM. CAP SET FLUSH WITH A.C. SURFACE STAMPED "DOUGLAS CO. SURVEYORS OFFICE JANET" (FAIR CONDITION) | 149072.063 | 1268751.159 | 197.022 |
| 44 | SET 13 MM SQ. I.R. 0.76 M LONG WITH 38 MM DIA. ALUM. CAP STAMPED "ODOT HORIZ. CONTROL 44" | 149443.137 | 1269001.198 | 194.813 |
| 45 | SET 13 MM SQ. I.R. 0.76 M LONG WITH 38 MM DIA. ALUM. CAP STAMPED "ODOT HORIZ. CONTROL 45" | 149142.865 | 1268890.036 | 194.999 |
| 46 | SET 13 MM SQ. I.R. 0.76 M LONG WITH 38 MM DIA. ALUM. CAP STAMPED "ODOT HORIZ. CONTROL 46" | 148945.420 | 1268822.401 | 194.362 |
| 47 | SET 13 MM SQ. I.R. 0.76 M LONG WITH 38 MM DIA. ALUM. CAP STAMPED "ODOT HORIZ. CONTROL 47" | 148693.888 | 1268783.945 | 195.625 |

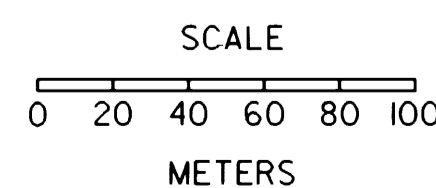
REGISTERED PROFESSIONAL LAND SURVEYOR
 Christine V. Blewins
 OREGON JULY 19, 1994
 CHRISTINE V. BLEVINS
 2669

RENEWAL DATE 12-31-99

CHRISTINE V. BLEVINS P.L.S.
 Oregon Department of Transportation
 3500 N.W. Stewart Parkway
 Roseburg, Oregon 97470

LEGEND

- ▲ SET MONUMENT
- FOUND MONUMENT
- ★ FOUND GPS MONUMENT



SCALE: 1:2000

NOTE: ALL COORDINATES ON THIS MAP ARE METRIC, ON A LOCAL DATUM PLANE, WHICH REPRESENTS TRUE GROUND DISTANCES. TO CONVERT COORDINATES TO ENGLISH, DIVIDE THE METRIC COORDINATES BY 0.3048

COUNTY SURVEYORS FILE DATA
 DO NOT REMOVE FROM OFFICE

OREGON DEPARTMENT OF TRANSPORTATION
**HORIZONTAL CONTROL, RECOVERY,
 AND RETRACEMENT MAP**
 MYRTLE CREEK - CANYONVILLE SEC. (1-5)
 DOUGLAS COUNTY

ODOT
 3500 Stewart Parkway, Suite 140
 Roseburg, Oregon 97470