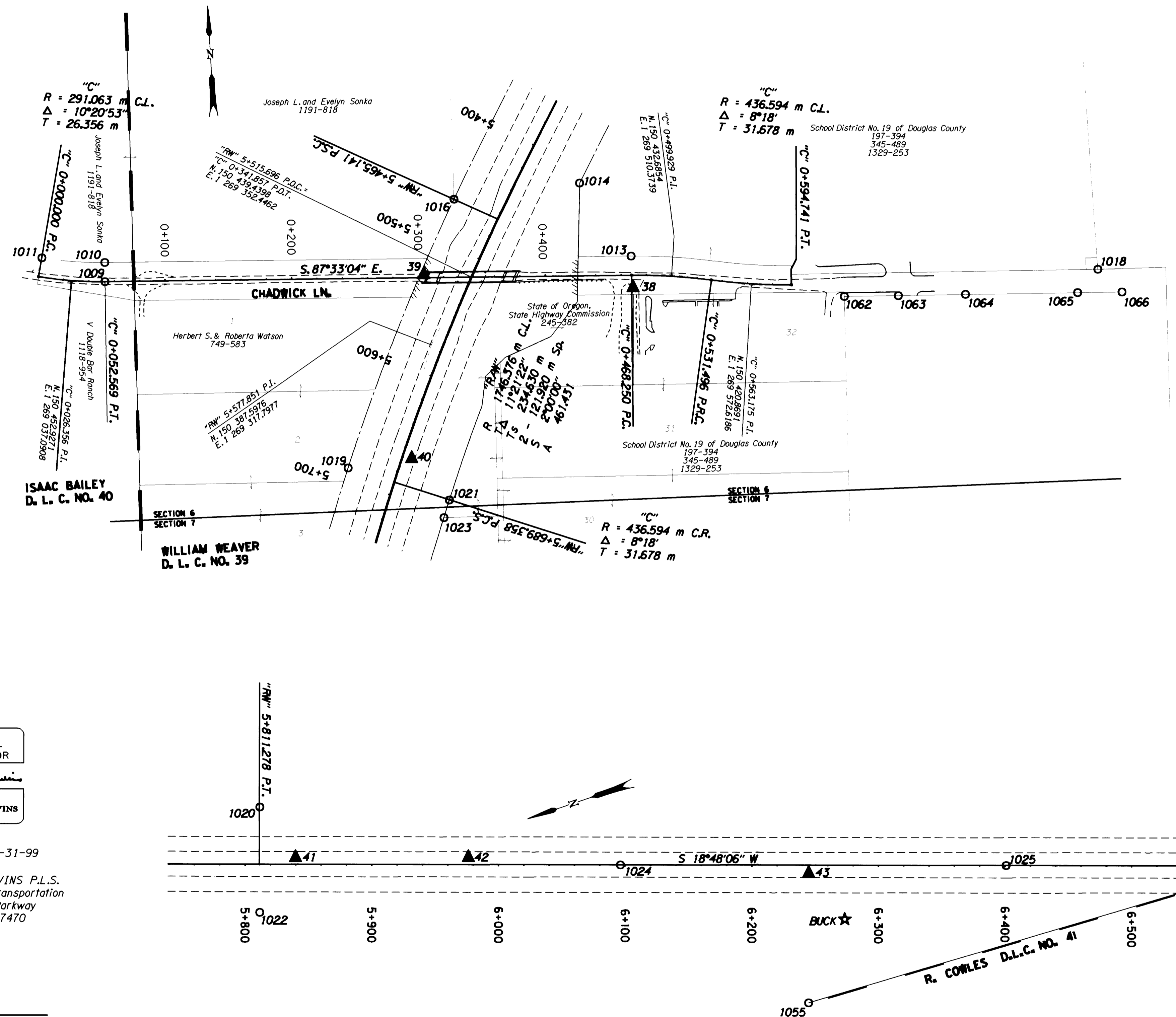


HORIZONTAL CONTROL, RECOVERY AND RETRACEMENT MAP

FOR THE OREGON DEPARTMENT OF TRANSPORTATION
LOCATED IN THE SE 1/4 OF SECTION 6 AND
THE NE 1/4 OF SECTION 7, T. 30 S., R. 5 W., W.M.
DOUGLAS COUNTY

FILED
Date: 4-29-1999 By: _____
This survey consists of: 11 Pgs.
Map: M129-39 F
Narrative: _____
Corner Rpt: (CS 65/19)
(previously filed control reports)
DOUGLAS COUNTY
SURVEYOR JR



REGISTERED
PROFESSIONAL
LAND SURVEYOR
Christine V. Blevins
OREGON
JULY 19, 1994
CHRISTINE V. BLEVINS
2669

RENEWAL DATE 12-31-99
CHRISTINE V. BLEVINS P.L.S.
Oregon Department of Transportation
3500 N.W. Stewart Parkway
Roseburg, Oregon 97470

LEGEND
▲ SET MONUMENT
○ FOUND MONUMENT
★ FOUND GPS MONUMENT

SCALE
0 20 40 60 80 100
METERS

NOTE: ALL COORDINATES ON THIS MAP ARE METRIC,
ON A LOCAL DATUM PLANE, WHICH REPRESENTS TRUE
GROUND DISTANCES. TO CONVERT COORDINATES TO
ENGLISH, DIVIDE THE METRIC COORDINATES BY
0.3048

SCALE: 1:2000

CONTROL NETWORK AND FOUND MONUMENTS

POINT	DESCRIPTION	NORTHING	EASTING	ELEV.
1009	FOUND BRIDGE SPIKE SET IN A.C. AT CENTERLINE OF CHADWICK LANE STA. 1+72.50 P.T. (GOOD CONDITION)	150451.807	1269063.419	194.793
1010	FOUND 3/4" (16 MM) I.R. 19 MM ABOVE SURFACE, STA. 1+72.50 P.T., 15.24 M (50 FT.) LT. (GOOD CONDITION) (DCSO MAP M96-15)	150467.027	1269064.072	
1011	FOUND 3/4" (16 MM) I.R., STA. 0+00.00 P.C. 15.24 M (50 FT.) LT. (POOR CONDITION) (DCSO *M96-15)	150473.635	1269014.766	
1013	FOUND 3/4" (16 MM) I.R. (POOR CONDITION) (C.S. 51/284-5)	150449.265	1269479.376	
1014	FOUND 3/4" (16 MM) I.R., 20 MM ABOVE SURFACE, R/W STA. 177+50.00, 38.10 M (125 FT.) LT. (GOOD CONDITION) (C.S. 51/284-5)	150509.605	1269441.923	
1016	FOUND 3/4" (19 MM) I.R. 20 MM ABOVE SURFACE, R/W STA. 179+29.92 P.C.S., 38.10 M (125 FT.) RT. (GOOD CONDITION)	150502.069	1269341.943	
1018	FOUND 1" (25 MM) O.D. IRON PIPE 0.30 M ABOVE SURFACE (GOOD CONDITION) (C.S. 51/284-5)	150418.622	1269846.628	
1019	FOUND 3/4" (16 MM) I.R., 0.20 M ABOVE SURFACE, R/W STA. 186+65.50 P.C.S., 38.10 M (125 FT.) RT. (GOOD CONDITION)	150293.684	1269247.105	
1020	FOUND 3/4" (19 MM) I.R. 0.30 M ABOVE SURFACE, R/W STA. 190+65.50 P.T., 45.72 M (150 FT.) LT. (GOOD CONDITION)	150150.512	1269285.406	
1021	FOUND 3/4" (16 MM) I.R., 0.30 M ABOVE SURFACE, R/W STA. 186+65.50 P.C.S., 45.72 M (150 FT.) LT. (GOOD CONDITION)	150263.932	1269325.486	
1022	FOUND 3/4" (16 MM) I.R., 0.50 M ABOVE SURFACE, R/W STA. 190+65.50 P.T., 38.10 M (125 FT.) RT. (GOOD CONDITION)	150177.500	1269206.057	
1023	FOUND 3/4" I.R. WITH 32 MM DIA. PLASTIC CAP STAMPED "R. BROWN PLS 2891" 0.30 M ABOVE SURFACE (GOOD CONDITION) (C.S. 1994-0113A)	150250.287	1269320.456	
1024	FOUND 3/4" (16 MM) I.R. WITH A 1 1/2" (38 MM) DIA. ALUM. CAP STAMPED "OREG. STATE HWY DIV." 0.10 M ABOVE SURFACE STA. 200+00.00 (GOOD CONDITION)	149895.816	1269150.365	194.117
1025	FOUND 3/4" (16 MM) I.R. WITH A 1 1/2" (38 MM) DIA. ALUM. CAP STAMPED "OREG. STATE HWY DIV." FLUSH W/SURFACE STA. 210+00.00 (GOOD CONDITION)	149607.396	1269052.177	193.963
1055	FOUND 1 1/4" (32 MM) STEEL SHAFT WITH A 4" (102 MM) GEAR ON TOP @ N.E. CORNER OF DLC 41, 50 MM BELOW SURFACE (GOOD CONDITION)	149789.951	1268999.279	
1062	FOUND 1 1/2" (38 MM) O.D. IRON PIPE 0.30 M BELOW SURFACE (POOR CONDITION) (DCSO VOL. 9, PG.41 - HATFIELD TRACTS)	150408.023	1269645.438	
1063	FOUND 1 1/2" (38 MM) O.D. IRON PIPE FLUSH W/SURFACE (GOOD CONDITION) (DCSO VOL. 9, PG.41 - HATFIELD TRACTS)	150406.411	1269688.109	
1064	FOUND 1/2" (13 MM) IRON REBAR 0.10 M BELOW SURFACE (FAIR CONDITION) (DCSO PLAT OF MIDWAY TRACTS)	150404.465	1269741.379	
1065	FOUND 1/2" (13 MM) IRON REBAR 30 MM BELOW SURFACE (GOOD CONDITION) (DCSO PLAT OF MIDWAY TRACTS)	150400.998	1269829.670	
1066	FOUND 3/4" (19 MM) IRON REBAR 0.10 M BELOW SURFACE (FAIR CONDITION) (DCSO PLAT OF MIDWAY TRACTS)	150399.591	1269864.673	
BUCK	SET 75 MM DIA. BRASS DISK IN CONC. MONUMENT STAMPED "OREGON D.O.T. GEODETIC CONTROL PT. DO NOT DISTURB BUCK" (DCSO CS65/19-1)	149741.875	1269052.671	194.531
38	SET 13 MM SQ. I.R. 0.76 M LONG WITH 38 MM DIA. ALUM. CAP STAMPED "ODOT HORIZ. CONTROL 38"	150425.612	1269479.290	197.408
39	SET 13 MM SQ. I.R. 0.76 M LONG WITH 38 MM DIA. ALUM. CAP STAMPED "ODOT HORIZ. CONTROL 39"	150444.976	1269315.009	201.023
40	SET 13 MM SQ. I.R. 0.76 M LONG WITH 38 MM DIA. ALUM. CAP STAMPED "ODOT HORIZ. CONTROL 40"	150299.765	1269297.568	194.893
41	SET 13 MM SQ. I.R. 0.76 M LONG WITH 38 MM DIA. ALUM. CAP STAMPED "ODOT HORIZ. CONTROL 41"	150136.451	1269239.374	194.973
42	SET 13 MM SQ. I.R. 0.76 M LONG WITH 38 MM DIA. ALUM. CAP STAMPED "ODOT HORIZ. CONTROL 42"	150007.287	1269195.729	195.042
43	SET 13 MM SQ. I.R. 0.76 M LONG WITH 38 MM DIA. ALUM. CAP STAMPED "ODOT HORIZ. CONTROL 43"	149756.733	1269097.617	194.806

COUNTY SURVEYORS FILE DATA
DO NOT REMOVE FROM OFFICE

OREGON DEPARTMENT OF TRANSPORTATION
**HORIZONTAL CONTROL, RECOVERY,
AND RETRACEMENT MAP**
MYRTLE CREEK - CANYONVILLE SEC. (1-5)
DOUGLAS COUNTY

ODOT
3500 Stewart Parkway, Suite 140
Roseburg, Oregon 97470