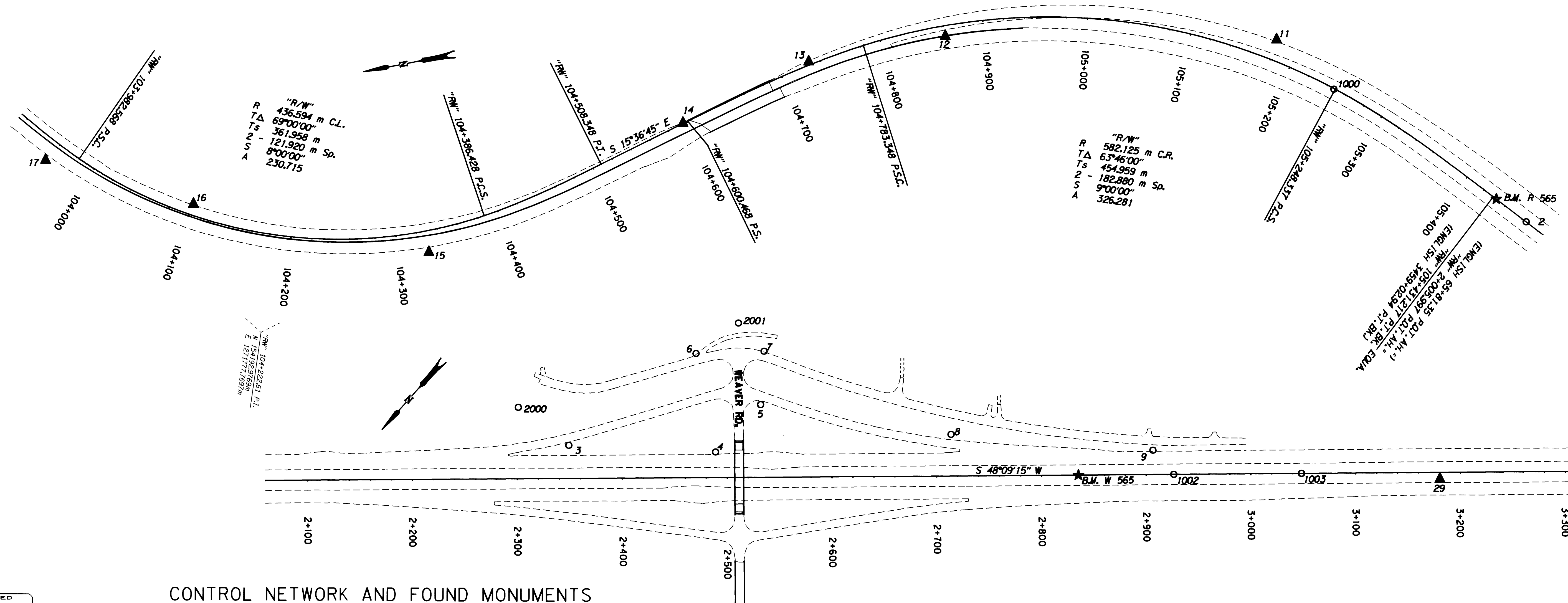


# HORIZONTAL CONTROL, RECOVERY AND RETRACEMENT MAP

FOR THE OREGON DEPARTMENT OF TRANSPORTATION  
LOCATED IN THE NW 1/4 & SW 1/4 OF SECTION 28, THE NW 1/4 OF SECTION 33,  
AND THE NE 1/4 & SE 1/4 OF SECTION 32, T. 29 S., R. 5 W., W.M.  
DOUGLAS COUNTY

"R/W" 105+055.43 P.L.  
 N 153317.4807m  
 E 121702.4181m

FILED  
 Date: 4-29-1999 By: JP  
 This survey consists of 11 sheets.  
 Map: M129-39D  
 Narrative:  
 Corner Rpt.: (23.65/13)  
 (previously filed control reports)  
 DOUGLAS COUNTY  
 SURVEYOR JR

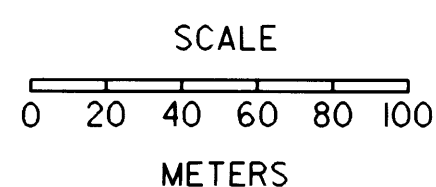


REGISTERED  
 PROFESSIONAL  
 LAND SURVEYOR  
 Christine V. Blevis  
 OREGON  
 JULY 19, 1994  
 CHRISTINE V. BLEVINS  
 2669

RENEWAL DATE 12-31-99  
 CHRISTINE V. BLEVINS P.L.S.  
 Oregon Department of Transportation  
 3500 N.W. Stewart Parkway  
 Roseburg, Oregon 97470

**LEGEND**

- ▲ SET MONUMENT
- FOUND MONUMENT
- ★ FOUND GPS MONUMENT



SCALE: 1:2000

**CONTROL NETWORK AND FOUND MONUMENTS**

POINT	DESCRIPTION	NORTHING	EASTING	ELEV.
R565	FOUND 2 3/4" (70 MM) BRASS DISK SET IN CONC. FLUSH WITH SURFACE STAMPED "STATE HIGHWAY DEPARTMENT BM NO. R565 1958 65+93.08 P.O.T."	153011.581	1271680.838	
W565	FOUND 2 3/4" (70 MM) BRASS DISK SET IN CONC. AT STA. 93+00.00 P.O.T. STAMPED "STATE HIGHWAY DEPARTMENT BM NO. W565 1958 ELEVATION FEET"	152461.028	1271065.944	187.352
2	FOUND 5/8" (16 MM) I.R. WITH A 1 1/2" (38 MM) DIA. ALUM. CAP STAMPED "OREG. STATE HWY DIV." @ STA. L4 3460+12.63 P.O.T. BK. /67+09.98 P.O.T. AH.	152987.823	1271654.308	187.504
1000	FOUND 5/8" (16 MM) I.R. WITH A 1 1/2" (38 MM) DIA. ALUM. CAP STAMPED "OREG. STATE HWY DIV." @ STA. L4 3452+80.28 P.C.S.	153144.050	1271813.329	188.420
1002	FOUND 5/8" (16 MM) I.R. WITH A 1 1/2" (38 MM) DIA. ALUM. CAP STAMPED "OREG. STATE HWY DIV." 100 MM BELOW SURFACE STA. 90+00.00 P.O.T. (GOOD CONDITION)	152400.032	1270997.825	187.149
1003	FOUND 5/8" (16 MM) I.R. WITH A 1 1/2" (38 MM) DIA. ALUM. CAP STAMPED "OREG. STATE HWY DIV." FLUSH WITH SURFACE STA. 100+00.00 P.O.T. (GOOD CONDITION)	152318.654	1270906.966	187.653
3	FOUND 13 MM SO. I.R. WITH 38 MM ALUM. CAP STAMPED "ODOT HORIZ. CONTROL 3" FLUSH W/SURFACE (GOOD CONDITION)	152761.379	1271449.078	189.186
4	FOUND 13 MM SO. I.R. WITH 38 MM ALUM. CAP STAMPED "ODOT HORIZ. CONTROL 4" FLUSH W/SURFACE (GOOD CONDITION)	152673.550	1271340.023	187.767
5	FOUND 13 MM SO. I.R. WITH 38 MM ALUM. CAP STAMPED "ODOT HORIZ. CONTROL 5" FLUSH W/SURFACE (GOOD CONDITION)	152610.753	1271338.041	193.367
6	FOUND 13 MM SO. I.R. WITH 38 MM ALUM. CAP STAMPED "ODOT HORIZ. CONTROL 6" FLUSH W/SURFACE (GOOD CONDITION)	152615.177	1271416.507	193.225
2001	FOUND 5/8" (16 MM) I.R. WITH A 1 1/2" (38 MM) DIA. ALUM. CAP, FLUSH WITH SURFACE, STAMPED "OREG. STATE HWY. DIV." (GOOD CONDITION)	152566.741	1271405.501	

**CONTROL NETWORK AND FOUND MONUMENTS**

POINT	DESCRIPTION	NORTHING	EASTING	ELEV.
7	FOUND 13 MM SO. I.R. WITH 38 MM ALUM. CAP STAMPED "ODOT HORIZ. CONTROL 7" FLUSH W/SURFACE (GOOD CONDITION)	152570.563	1271369.395	193.855
8	FOUND 13 MM SO. I.R. WITH 38 MM ALUM. CAP STAMPED "ODOT HORIZ. CONTROL 8" FLUSH W/SURFACE (GOOD CONDITION)	152512.053	1271183.011	187.774
9	FOUND 13 MM SO. I.R. WITH 38 MM ALUM. CAP STAMPED "ODOT HORIZ. CONTROL 9" FLUSH W/SURFACE (GOOD CONDITION)	152395.856	1271028.084	188.610
11	SET 13 MM SO. I.R. 0.76 M LONG WITH 38 MM DIA. ALUM. CAP STAMPED "ODOT HORIZ. CONTROL 11"	153188.713	1271871.806	190.036
12	SET 13 MM SO. I.R. 0.76 M LONG WITH 38 MM DIA. ALUM. CAP STAMPED "ODOT HORIZ. CONTROL 12"	153498.733	1271935.070	192.805
13	SET 13 MM SO. I.R. 0.76 M LONG WITH 38 MM DIA. ALUM. CAP STAMPED "ODOT HORIZ. CONTROL 13"	153631.249	1271935.972	195.300
14	SET 13 MM SO. I.R. 0.76 M LONG WITH 38 MM DIA. ALUM. CAP STAMPED "ODOT HORIZ. CONTROL 14"	153760.176	1271900.563	197.350
15	SET 13 MM SO. I.R. 0.76 M LONG WITH 38 MM DIA. ALUM. CAP STAMPED "ODOT HORIZ. CONTROL 15"	154021.052	1271824.871	202.968
16	SET 13 MM SO. I.R. 0.76 M LONG WITH 38 MM DIA. ALUM. CAP STAMPED "ODOT HORIZ. CONTROL 16"	154232.930	1271912.349	202.095
17	SET 13 MM SO. I.R. 0.76 M LONG WITH 38 MM DIA. ALUM. CAP STAMPED "ODOT HORIZ. CONTROL 17"	154363.227	1271980.533	204.057
29	SET 13 MM SO. I.R. 0.76 M LONG WITH 38 MM DIA. ALUM. CAP STAMPED "ODOT HORIZ. CONTROL 29"	152234.149	1270805.393	188.541
2000	FOUND 5/8" (16 MM) I.R. 30 MM ABOVE SURFACE, R/W STA. 75+50.00. 225 FT. (68.58 M) LT. (GOOD CONDITION)	152765.946	1271509.436	

**COUNTY SURVEYORS FILE DATA  
DO NOT REMOVE FROM OFFICE**

NOTE: ALL COORDINATES ON THIS MAP ARE METRIC, ON A LOCAL DATUM PLANE, WHICH REPRESENTS TRUE GROUND DISTANCES. TO CONVERT COORDINATES TO ENGLISH, DIVIDE THE METRIC COORDINATES BY 0.3048

OREGON DEPARTMENT OF TRANSPORTATION  
**HORIZONTAL CONTROL, RECOVERY,  
AND RETRACEMENT MAP**  
 MYRTLE CREEK - CANYONVILLE SEC. (1-5)  
 DOUGLAS COUNTY  
 ODOT  
 3500 Stewart Parkway, Suite 140  
 Roseburg, Oregon 97470