

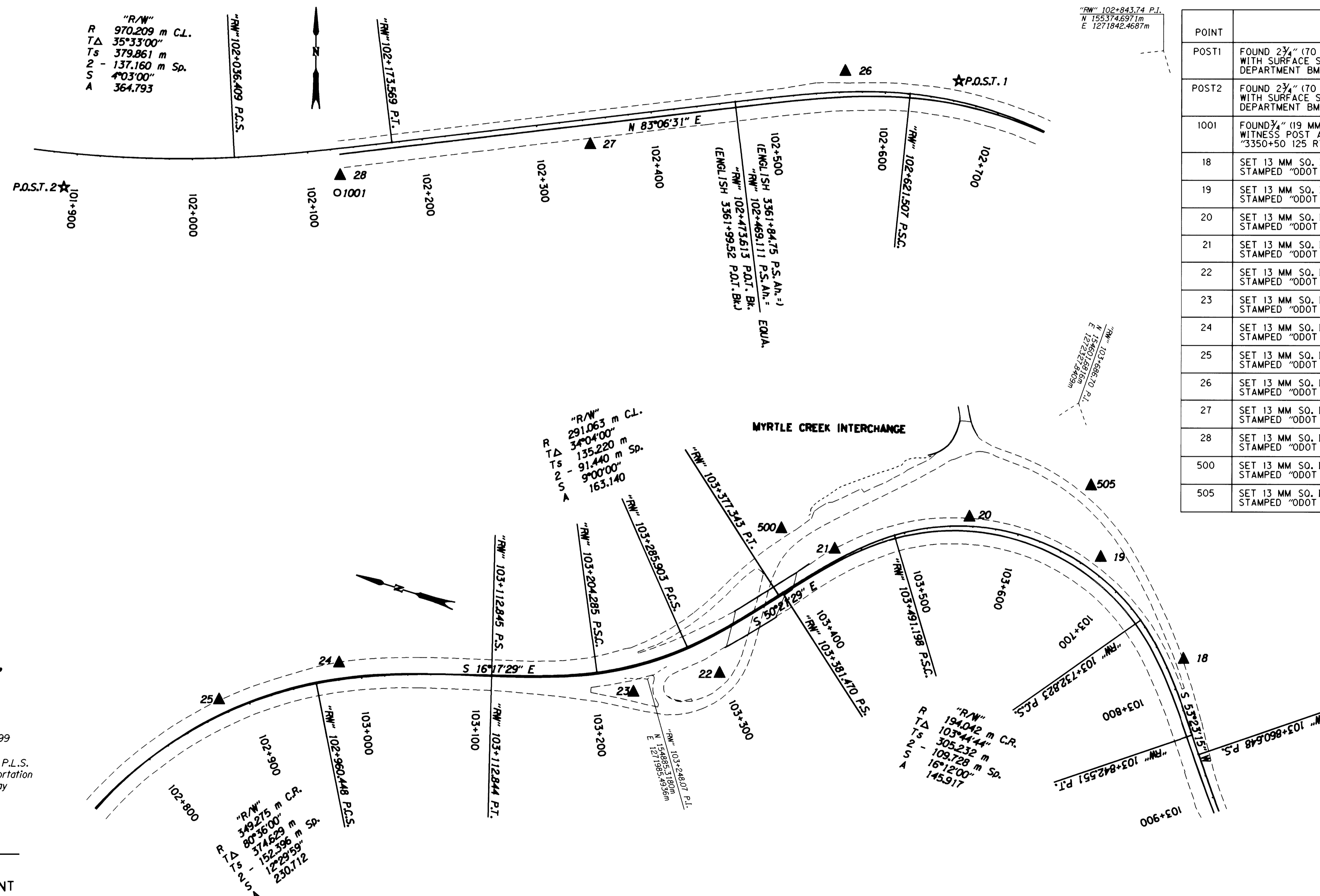
# HORIZONTAL CONTROL, RECOVERY AND RETRACEMENT MAP

FOR THE OREGON DEPARTMENT OF TRANSPORTATION  
 LOCATED IN THE SE 1/4 OF SECTION 20, THE SW 1/4 OF SECTION 21,  
 AND THE NW 1/4 OF SECTION 28, T. 29 S., R. 5 W., W.M.  
 DOUGLAS COUNTY

FILED  
 Date: 4-29-1999 By: J.P.  
 This survey consists of: 11 Pgs.  
 Map: M129-392  
 Narrative:  
 Corner Rpt: (cs 44/19)  
 (previously filed control reports)  
 DOUGLAS COUNTY  
 SURVEYOR J.P.

## CONTROL NETWORK AND FOUND MONUMENTS

POINT	DESCRIPTION	NORTHING	EASTING	ELEV.
POST1	FOUND 2 3/4" (70 MM) BRASS DISK SET IN CONC. FLUSH WITH SURFACE STAMPED "STATE HIGHWAY DEPARTMENT BM NO. P.O.S.T. ELEVATION 614.11"	155348.239	1271664.711	189.029
POST2	FOUND 2 3/4" (70 MM) BRASS DISK SET IN CONC. FLUSH WITH SURFACE STAMPED "STATE HIGHWAY DEPARTMENT BM NO. P.O.S.T. ELEVATION 850 +"	155254.406	1270888.341	185.933
1001	FOUND 3/4" (19 MM) I.R. 180 MM ABOVE SURFACE. WITNESS POST AND PADDLE NEARBY MARKED "3350+50 125 RT SHRW" (GOOD CONDITION)	155249.948	1271125.485	
18	SET 13 MM SQ. I.R. 0.76 M LONG WITH 38 MM ALUM. CAP STAMPED "ODOT HORIZ. CONTROL 18"	154447.272	1272144.229	201.983
19	SET 13 MM SQ. I.R. 0.76 M LONG WITH 38 MM ALUM. CAP STAMPED "ODOT HORIZ. CONTROL 19"	154542.966	1272207.188	206.369
20	SET 13 MM SQ. I.R. 0.76 M LONG WITH 38 MM ALUM. CAP STAMPED "ODOT HORIZ. CONTROL 20"	154662.329	1272205.748	199.897
21	SET 13 MM SQ. I.R. 0.76 M LONG WITH 38 MM ALUM. CAP STAMPED "ODOT HORIZ. CONTROL 21"	154765.376	1272143.840	197.428
22	SET 13 MM SQ. I.R. 0.76 M LONG WITH 38 MM ALUM. CAP STAMPED "ODOT HORIZ. CONTROL 22"	154827.653	1272010.225	195.316
23	SET 13 MM SQ. I.R. 0.76 M LONG WITH 38 MM ALUM. CAP STAMPED "ODOT HORIZ. CONTROL 23"	154893.846	1271971.949	194.086
24	SET 13 MM SQ. I.R. 0.76 M LONG WITH 38 MM ALUM. CAP STAMPED "ODOT HORIZ. CONTROL 24"	155144.944	1271918.439	191.017
25	SET 13 MM SQ. I.R. 0.76 M LONG WITH 38 MM ALUM. CAP STAMPED "ODOT HORIZ. CONTROL 25"	155234.236	1271856.288	190.166
26	SET 13 MM SQ. I.R. 0.76 M LONG WITH 38 MM ALUM. CAP STAMPED "ODOT HORIZ. CONTROL 26"	155357.520	1271566.098	188.889
27	SET 13 MM SQ. I.R. 0.76 M LONG WITH 38 MM ALUM. CAP STAMPED "ODOT HORIZ. CONTROL 27"	155293.302	1271344.788	185.002
28	SET 13 MM SQ. I.R. 0.76 M LONG WITH 38 MM ALUM. CAP STAMPED "ODOT HORIZ. CONTROL 28"	155265.879	1271127.919	184.376
500	SET 13 MM SQ. I.R. 0.76 M LONG WITH 38 MM ALUM. CAP STAMPED "ODOT HORIZ. CONTROL 500"	154808.382	1272145.561	
505	SET 13 MM SQ. I.R. 0.76 M LONG WITH 38 MM ALUM. CAP STAMPED "ODOT HORIZ. CONTROL 505"	154568.484	1272258.131	



REGISTERED  
 PROFESSIONAL  
 LAND SURVEYOR  
 Christine V. Blewins  
 OREGON  
 JULY 19, 1994  
 CHRISTINE V. BLEVINS  
 2669

RENEWAL DATE 12-31-99  
 CHRISTINE V. BLEVINS P.L.S.  
 Oregon Department of Transportation  
 3500 N.W. Stewart Parkway  
 Roseburg, Oregon 97470

LEGEND  
 ▲ SET MONUMENT  
 ○ FOUND MONUMENT  
 ☆ FOUND GPS MONUMENT

SCALE  
 0 20 40 60 80 100  
 METERS

Scale: 1:2000

NOTE: ALL COORDINATES ON THIS MAP ARE METRIC, ON A LOCAL DATUM PLANE, WHICH REPRESENTS TRUE GROUND DISTANCES. TO CONVERT COORDINATES TO ENGLISH, DIVIDE THE METRIC COORDINATES BY 0.3048

COUNTY SURVEYORS FILE DATA  
 DO NOT REMOVE FROM OFFICE

OREGON DEPARTMENT OF TRANSPORTATION  
 HORIZONTAL CONTROL, RECOVERY,  
 AND RETRACEMENT MAP  
 MYRTLE CREEK - CANYONVILLE SEC. (1-5)  
 DOUGLAS COUNTY  
 ODOT  
 3500 Stewart Parkway, Suite 140  
 Roseburg, Oregon 97470