

# HORIZONTAL CONTROL, RECOVERY AND RETRACEMENT MAP

## FOR THE OREGON DEPARTMENT OF TRANSPORTATION

LOCATED IN SEC. 20, 21, 28, 32, 33, T. 29 S., R. 5. W., SEC. 5, 6, 7, 17, 18, 19, 20, 21, 27, 28, 34, T. 30 S., R. 5 W., W.M. DOUGLAS COUNTY

FILED  
Date: 4-29-1999 By: J.P.  
This survey consists of  
Map: M 129-39A 11 86  
Narrative:  
Corner Rpt: (CS 65/19-1)  
(previously filed control reports)  
DOUGLAS COUNTY  
SURVEYOR

### CONTROL AND RECOVERY NARRATIVE:

THE PURPOSE OF THIS SURVEY WAS TO ESTABLISH CONTROL FOR A HIGHWAY CONSTRUCTION PROJECT NAMED "MYRTLE CREEK-CANYONVILLE SECTION" ON THE PACIFIC HIGHWAY (INTERSTATE 5). THE CONTROL SURVEY WORK WAS COMPLETED NOV. 14, 1997. THE ORIGINAL FIELD NOTES ARE CONTAINED IN BOOK 3595, ARCHIVED IN THE ROADWAY ENGINEERING SECTION IN SALEM, OREGON.

BASIS OF BEARING WAS ESTABLISHED BY HOLDING THE COORDINATES ON EIGHT MONUMENTS CALLED "POST1", "POST2", "R565", "W565", "BUCK", "LINDA", "CHRIS" AND "LYNNE" (SHOWN HERE ON PAGE 1 SCHEMATIC). A GEODETIC SURVEY WAS RUN ON THESE EIGHT MONUMENTS BY ODOT GEOMETRONICS SECTION BASED IN SALEM, AND FILED WITH DOUGLAS COUNTY SURVEYORS OFFICE AS "CS 65/19-1". THE REMAINDER OF THE HORIZONTAL CONTROL NETWORK CONSISTS OF OTHER FOUND MONUMENTS AND ADDITIONAL SET MONUMENTS DESCRIBED HEREIN. THE COORDINATES WERE DERIVED FROM STATE PLANE COORDINATES (NAD 83 (1991)) ESTABLISHED ON THE GEODETIC MONUMENTS; THESE COORDINATES WERE THEN CONVERTED TO LOCAL DATUM PLANE COORDINATES USING A CONVERSION FACTOR OF 0.99986780.

THIS MAP IS METRIC. TO CONVERT TO ENGLISH UNITS, DIVIDE BY 0.3048.

A WILD T1610 ELECTRONIC THEODOLITE AND DI1600 DISTOMAT WERE USED TO MAKE ALL OBSERVATIONS. THE T1610 THEODOLITE HAS A STANDARD ANGULAR ERROR OF +/- 1.5 SECONDS AND THE DI1600 HAS A STANDARD DISTANCE ERROR OF +/- 3MM, +/- 2 PPM.

CLOSED LOOP LEVEL CIRCUITS FROM ESTABLISHED BENCH MARKS, THROUGH THE HORIZONTAL CONTROL POINTS, WERE MADE USING A LEICA NA2002 LEVEL. BENCH MARKS E565, M565, N565, U565, W565, X565, Y565, P353, L499, O560 AND K615 WERE USED AS VERTICAL CONTROL AND COME FROM THE NATIONAL GEODETIC VERTICAL DATUM OF 1929. THE STANDARD DEVIATION FOR A WILD NA2002 IS 0.9 MM IN A 1 KM DOUBLE RUN LEVEL CIRCUIT.

THE LEAST SQUARES ADJUSTMENT PRODUCED: ANGULAR RESIDUALS (THE AMOUNT THE FIELD OBSERVED ANGLES WERE CHANGED DUE TO THE ADJUSTMENT) AVERAGING 2.38 SECONDS AND NO GREATER THAN 16 SECONDS; DISTANCE RESIDUALS (THE AMOUNTS THE FIELD OBSERVED DISTANCES WERE CHANGED DUE TO THE ADJUSTMENT) AVERAGING LESS THAN 1 MM AND NO GREATER THAN 6 MM.

THERE IS A 95% PROBABILITY THAT THE FINAL POSITIONS OF THE CONTROL POINTS ARE WITHIN THE ERROR ELLIPSES AS SHOWN IN THE TABLES ON PAGE 2 OF 11.

### RETRACEMENT NARRATIVE:

THE PRIMARY INTENT OF THIS RETRACEMENT IS TO ESTABLISH THE EXISTING RIGHT-OF-WAY CENTERLINE BETWEEN CHADWICK LANE AND PRUNER RD. NEW RIGHT-OF-WAY WAS PURCHASED ONLY AT CHADWICK LANE DUE TO RAISING OF THE STRUCTURE.

THE FOLLOWING R/W MAPS WERE USED TO RETRACE THE R/W ALIGNMENT: 7B-22-19, 6B-34-18, 7B-27-5, 8B-30-24, 8B-29-20, AND 7B-32-14.

THE NORTH PART OF THE R/W ALIGNMENT WAS RETRACED USING THE DELTAS AND THE TANGENTS FROM R/W MAPS 7B-22-19 AND 8B-29-20 FOR THE "L2REV" CENTERLINE. THE R/W CENTERLINE WAS RUN FROM THE TANGENT NORTH OF WEAVER RD. INTERCHANGE IN A NORTHERLY DIRECTION. THE CENTERLINE WAS ADJUSTED ON THE VERY NORTH END TO HAVE THE CORRECT RELATIONSHIP WITH THE TWO "L" LINE P.O.S.T. MONUMENTS (POST1 AND POST2) AND RUN IN A SOUTHERLY DIRECTION. THE ERROR BETWEEN RUNNING IN A NORTHERLY AND A SOUTHERLY DIRECTION WAS TAKEN UP IN THE MYRTLE CREEK CURVE (THE DELTA WAS CHANGED).

FROM THE TANGENT SOUTH OF WEAVER RD INTERCHANGE THROUGH THE CURVE SOUTH OF RIDDLE INTERCHANGE, TIED MONUMENTS (10, X565, 1007, 1015, 1024, AND 1026) WERE USED TO DEVELOP THE TANGENTS AND THE EXISTING CURVE INFORMATION (EXCLUDING DELTA) AS SHOWN ON R/W MAPS 7B-22-19 AND 7B-32-14.

THE DELTA FOR THE CURVE BEFORE GAZLEY INTERCHANGE WAS TAKEN FROM R/W MAP 7B-32-14. TWO MONUMENTS WERE HELD ON THE BACK TANGENT, ONE ON THE P.T. (POINT 1036), AND THE OTHER WAS THE PROJECTED X POINT (POINT ON SEMI-TANGENT) ON THE P.C.S. (POINT 1035). THE FORWARD TANGENT WAS ADJUSTED TO BE 5 FEET (1.524 M) EAST OF THE EXISTING BARRIER AT THE MIDPOINT OF THE TANGENT.

THE FORWARD TANGENT OF THE CURVE AT GAZLEY INTERCHANGE WAS DEVELOPED FROM A SPLIT BETWEEN THE MONUMENTS AT THE PT AT 125 FT. (38.10 M) RIGHT AND LEFT (1037 AND 1038) AND A POT AT ENGLISH STATION 400+00 175 FT. (53.340 M) RIGHT (1044).

THE REMAINING PORTION OF THE R/W ALIGNMENT WAS RETRACED FROM THE SOUTH END OF THE PROJECT WORKING IN A NORTHERLY DIRECTION. SOUTH OF THE 5TH STREET OVER CROSSING, MONUMENT POINTS (1049, 1050, 1051, AND 1052) WERE SPLIT TO FORM A TANGENT. FROM THAT TANGENT, WORKING IN A NORTHERLY DIRECTION, THE DELTAS WERE TAKEN FROM R/W MAP 6B-34-18 AND THE TANGENTS WERE FORCED TO PASSED THROUGH THE CENTERLINE POINTS PROJECTED FROM THE MONUMENTS (1045, 1046, 1047, AND 1048).

STATIONING WAS CONVERTED FROM ENGLISH TO METRIC BY MULTIPLYING BY A FACTOR OF 0.3048. THE BEGINNING OF PROJECT STATIONING WAS ADJUSTED UNTIL THE STATIONING OF THE EQUATION AT ENGLISH STATION 3361+84.75 P.S. BK. AND 3361+99.52 P.O.T. AH. CAME OUT CORRECT WHEN CONVERTED TO METRIC.

THE NEXT EQUATION IS AT ENGLISH STATION 3459+02.94 P.T. BK. AND 65+81.35 P.O.T. AH. WHICH WAS ADJUSTED TO FALL AT THE P.T. AND TO MATCH THE MONUMENT (R565) AT ENGLISH STATION 65+93.08 OR METRIC STATION 2+009.571 P.O.T. IT WAS FOUND THAT SOME OF THE MONUMENTS WERE OFF A LITTLE MORE THAN 0.3 METERS ON THEIR STATIONING, BUT MONUMENTS WERE BACK ON STATIONING BEFORE THE NEXT EQUATION WAS REACHED. THE MONUMENT AT ENGLISH STATION 274+78.74 P.T. (POINT 1036) WAS FOUND TO BE ONLY 0.004 METERS OFF.

THE NEXT EQUATION IS AT ENGLISH STATION 279+23.44 P.O.T. BK. AND 280+25.74 P.S. AH. BOTH AHEAD AND BACK STATIONS WERE ADJUSTED EQUALLY TO MAKE THE EQUATION FALL ON THE P.S.

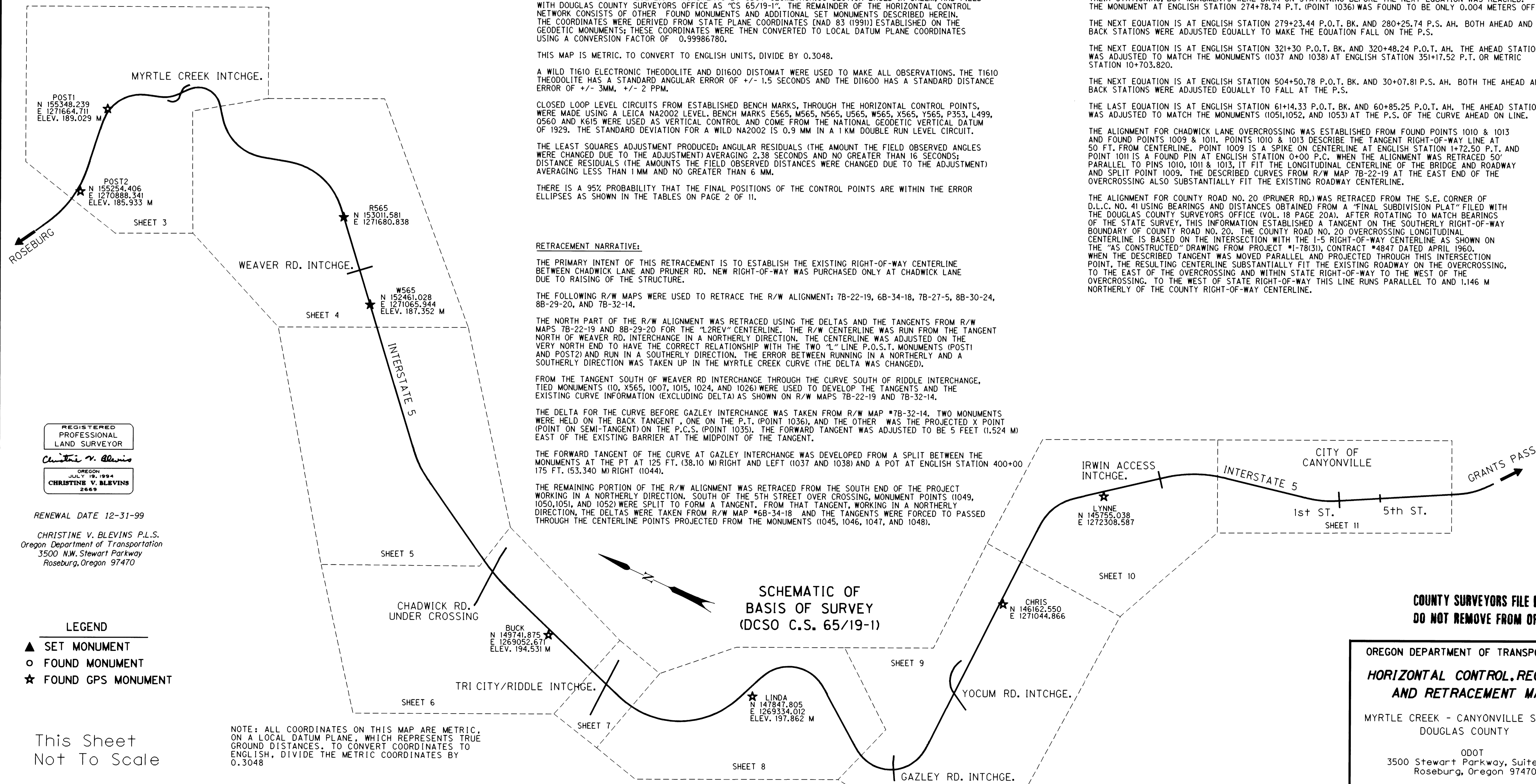
THE NEXT EQUATION IS AT ENGLISH STATION 321+30 P.O.T. BK. AND 320+48.24 P.O.T. AH. THE AHEAD STATION WAS ADJUSTED TO MATCH THE MONUMENTS (1037 AND 1038) AT ENGLISH STATION 351+17.52 P.T. OR METRIC STATION 10+703.820.

THE NEXT EQUATION IS AT ENGLISH STATION 504+50.78 P.O.T. BK. AND 30+07.81 P.S. AH. BOTH THE AHEAD AND BACK STATIONS WERE ADJUSTED EQUALLY TO FALL AT THE P.S.

THE LAST EQUATION IS AT ENGLISH STATION 61+14.33 P.O.T. BK. AND 60+85.25 P.O.T. AH. THE AHEAD STATION WAS ADJUSTED TO MATCH THE MONUMENTS (1051, 1052, AND 1053) AT THE P.S. OF THE CURVE AHEAD ON LINE.

THE ALIGNMENT FOR CHADWICK LANE OVERCROSSING WAS ESTABLISHED FROM FOUND POINTS 1010 & 1013 AND FOUND POINTS 1009 & 1011. POINTS 1010 & 1013 DESCRIBE THE TANGENT RIGHT-OF-WAY LINE AT 50 FT. FROM CENTERLINE. POINT 1009 IS A SPIKE ON CENTERLINE AT ENGLISH STATION 1+72.50 P.T. AND POINT 1011 IS A FOUND PIN AT ENGLISH STATION 0+00 P.C. WHEN THE ALIGNMENT WAS RETRACED 50' PARALLEL TO PINS 1010, 1011 & 1013, IT FIT THE LONGITUDINAL CENTERLINE OF THE BRIDGE AND ROADWAY AND SPLIT POINT 1009. THE DESCRIBED CURVES FROM R/W MAP 7B-22-19 AT THE EAST END OF THE OVERCROSSING ALSO SUBSTANTIALLY FIT THE EXISTING ROADWAY CENTERLINE.

THE ALIGNMENT FOR COUNTY ROAD NO. 20 (PRUNER RD.) WAS RETRACED FROM THE S.E. CORNER OF D.L.C. NO. 41 USING BEARINGS AND DISTANCES OBTAINED FROM A "FINAL SUBDIVISION PLAT" FILED WITH THE DOUGLAS COUNTY SURVEYORS OFFICE (VOL. 18 PAGE 20A). AFTER ROTATING TO MATCH BEARINGS OF THE STATE SURVEY, THIS INFORMATION ESTABLISHED A TANGENT TO THE SOUTHERLY RIGHT-OF-WAY BOUNDARY OF COUNTY ROAD NO. 20. THE COUNTY ROAD NO. 20 OVERCROSSING LONGITUDINAL CENTERLINE IS BASED ON THE INTERSECTION WITH THE 1-5 RIGHT-OF-WAY CENTERLINE AS SHOWN ON THE "AS CONSTRUCTED" DRAWING FROM PROJECT #1-78(31), CONTRACT #4847 DATED APRIL 1960. WHEN THE DESCRIBED TANGENT WAS MOVED PARALLEL AND PROJECTED THROUGH THIS INTERSECTION POINT, THE RESULTING CENTERLINE SUBSTANTIALLY FIT THE EXISTING ROADWAY ON THE OVERCROSSING, TO THE EAST OF THE OVERCROSSING AND WITHIN STATE RIGHT-OF-WAY TO THE WEST OF THE OVERCROSSING. TO THE WEST OF STATE RIGHT-OF-WAY THIS LINE RUNS PARALLEL TO AND 1.146 M NORTHERLY OF THE COUNTY RIGHT-OF-WAY CENTERLINE.



REGISTERED PROFESSIONAL LAND SURVEYOR  
Christine V. Blewins  
OREGON JULY 19, 1994  
CHRISTINE W. BLEWINS  
2669

RENEWAL DATE 12-31-99  
CHRISTINE V. BLEWINS P.L.S.  
Oregon Department of Transportation  
3500 N.W. Stewart Parkway  
Roseburg, Oregon 97470

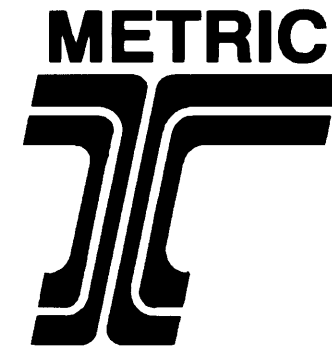
- LEGEND
- ▲ SET MONUMENT
- FOUND MONUMENT
- ★ FOUND GPS MONUMENT

This Sheet Not To Scale

NOTE: ALL COORDINATES ON THIS MAP ARE METRIC, ON A LOCAL DATUM PLANE, WHICH REPRESENTS TRUE GROUND DISTANCES. TO CONVERT COORDINATES TO ENGLISH, DIVIDE THE METRIC COORDINATES BY 0.3048

COUNTY SURVEYORS FILE DATA DO NOT REMOVE FROM OFFICE

OREGON DEPARTMENT OF TRANSPORTATION  
**HORIZONTAL CONTROL, RECOVERY, AND RETRACEMENT MAP**  
MYRTLE CREEK - CANYONVILLE SEC. (1-5)  
DOUGLAS COUNTY  
ODOT  
3500 Stewart Parkway, Suite 140  
Roseburg, Oregon 97470



# HORIZONTAL CONTROL, RECOVERY AND RETRACEMENT MAP

FOR THE OREGON DEPARTMENT OF TRANSPORTATION

LOCATED IN SEC. 20, 21, 28, 32, 33, T. 29 S., R. 5 W., SEC. 5, 6, 7, 17, 18, 19, 20, 21, 27, 28, 34, T. 30 S., R. 5 W., W.M.  
DOUGLAS COUNTY

FILED  
Date: 4-29-1999 By: J.P.  
This survey consists of: 11 Pgs.  
Map: M129-39 B  
Narrative: (CS 65/19)  
(previously filed control reports)  
DOUGLAS COUNTY  
SURVEYOR J.P.

## ERROR ANALYSIS TABLES

ADJUSTED COORDINATES 95% CONFIDENCE LIMITS					
POINT ID	NORTH	EAST	SEMI MAJOR	SEMI MINOR	ORIENTATION
2	0.002	0.002	0.002	0.002	S51°46'45"E
3	0.004	0.004	0.006	0.002	S44°38'47"E
4	0.005	0.005	0.007	0.002	S43°12'45"E
5	0.002	0.002	0.002	0.001	S46°31'53"E
6	0.001	0.002	0.002	0.001	S61°08'46"E
7	0.001	0.002	0.002	0.001	S52°31'20"E
8	0.003	0.002	0.003	0.001	S31°05'14"E
11	0.005	0.005	0.007	0.002	S45°03'08"E
12	0.006	0.012	0.013	0.002	S63°25'16"E
13	0.006	0.014	0.015	0.004	S68°40'20"E
14	0.007	0.015	0.016	0.005	S73°37'35"E
15	0.008	0.017	0.017	0.008	S82°07'08"E
16	0.007	0.018	0.018	0.007	S85°07'03"E
17	0.006	0.017	0.017	0.006	S87°56'25"E
19	0.007	0.013	0.014	0.005	N67°02'06"E
18	0.006	0.015	0.016	0.005	N76°29'34"E
20	0.007	0.011	0.012	0.005	N61°22'11"E
21	0.007	0.010	0.011	0.005	N61°18'24"E
23	0.007	0.009	0.010	0.005	N57°37'07"E
22	0.007	0.010	0.011	0.005	N61°20'15"E
24	0.007	0.006	0.009	0.002	N38°43'59"E
25	0.006	0.004	0.007	0.002	N30°59'20"E
26	0.004	0.002	0.004	0.002	N02°53'52"E
27	0.007	0.002	0.007	0.002	S06°37'06"E
28	0.007	0.002	0.007	0.002	S05°08'56"E
9	0.002	0.003	0.003	0.002	S54°18'46"E
29	0.008	0.008	0.011	0.002	S41°38'22"E
30	0.012	0.011	0.016	0.002	S43°02'52"E
31	0.013	0.012	0.018	0.003	S43°59'33"E
X565	0.011	0.012	0.016	0.003	S46°47'21"E
Y565	0.010	0.011	0.015	0.003	S48°42'58"E
32	0.009	0.011	0.014	0.003	S51°32'28"E
33	0.009	0.011	0.014	0.003	S52°09'03"E
34	0.008	0.011	0.014	0.003	S55°06'25"E
35	0.008	0.012	0.014	0.004	S55°10'37"E
36	0.008	0.014	0.016	0.003	S60°52'18"E
37	0.007	0.014	0.016	0.003	S63°38'00"E
39	0.007	0.013	0.015	0.003	S65°54'57"E
38	0.008	0.013	0.015	0.005	S62°35'48"E
40	0.006	0.013	0.014	0.003	S65°41'26"E
41	0.005	0.011	0.012	0.002	S65°04'48"E
42	0.004	0.008	0.009	0.002	S63°24'53"E
43	0.002	0.002	0.002	0.002	S69°31'24"E
44	0.002	0.008	0.008	0.002	S79°09'32"E
45	0.003	0.010	0.011	0.002	S75°35'13"E
46	0.003	0.009	0.009	0.003	S75°27'18"E
JANET	0.004	0.009	0.009	0.003	S77°11'23"E
47	0.003	0.008	0.008	0.003	S79°46'29"E
DLCA1	0.006	0.009	0.010	0.004	S64°30'48"E
48	0.004	0.005	0.006	0.003	N67°39'11"E
CHEV	0.012	0.005	0.012	0.005	N01°18'10"E

ADJUSTED COORDINATES 95% CONFIDENCE LIMITS					
POINT ID	NORTH	EAST	SEMI MAJOR	SEMI MINOR	ORIENTATION
49	0.005	0.006	0.007	0.003	N53°07'51"E
50	0.006	0.006	0.008	0.003	N45°03'33"E
51	0.005	0.005	0.007	0.002	N47°53'24"E
52	0.006	0.006	0.007	0.003	N43°57'43"E
53	0.009	0.006	0.010	0.004	N31°23'06"E
54	0.010	0.010	0.013	0.004	N46°01'38"E
55	0.007	0.013	0.015	0.003	N63°25'25"E
56	0.007	0.015	0.016	0.006	N70°56'03"E
58	0.011	0.011	0.013	0.009	N42°40'06"E
57	0.011	0.013	0.014	0.009	N57°22'21"E
59	0.011	0.006	0.011	0.006	N10°51'08"E
60	0.011	0.007	0.011	0.007	N11°38'15"E
61	0.011	0.005	0.011	0.005	N04°34'15"E
62	0.013	0.004	0.013	0.004	N03°12'25"E
63	0.014	0.003	0.014	0.003	N03°04'27"E
64	0.015	0.003	0.015	0.003	N03°26'30"E
65	0.015	0.003	0.015	0.003	N03°43'52"E
66	0.014	0.002	0.014	0.002	N05°06'04"E
67	0.009	0.002	0.009	0.002	N08°18'12"E
68	0.005	0.002	0.005	0.001	N03°51'33"E
69	0.003	0.002	0.003	0.002	S01°31'04"E
70	0.008	0.002	0.008	0.002	N01°52'49"E
71	0.009	0.002	0.009	0.002	N03°47'35"E
72	0.008	0.002	0.008	0.002	N05°28'50"E
73	0.004	0.002	0.004	0.002	N22°09'30"E
74	0.004	0.003	0.004	0.002	N27°56'46"E
80	0.003	0.003	0.004	0.002	N40°25'12"E
75	0.003	0.003	0.004	0.002	N49°18'15"E
76	0.003	0.003	0.004	0.002	N52°01'27"E
77	0.002	0.002	0.003	0.002	N44°42'56"E
78	0.009	0.011	0.014	0.002	N48°59'19"E
79	0.010	0.013	0.016	0.002	N52°43'43"E
81	0.016	0.021	0.026	0.002	N52°53'32"E
82	0.019	0.027	0.032	0.003	N55°08'40"E
83	0.022	0.042	0.046	0.005	N63°05'18"E
85	0.025	0.065	0.070	0.008	N69°25'54"E
84	0.021	0.053	0.057	0.008	N69°01'37"E
86	0.027	0.085	0.088	0.009	N73°00'52"E
87	0.034	0.102	0.107	0.009	N71°53'23"E
89	0.047	0.121	0.130	0.008	N69°06'46"E
90	0.063	0.158	0.170	0.008	N68°21'51"E
88	0.040	0.114	0.121	0.008	N70°45'57"E
91	0.075	0.170	0.186	0.009	N66°25'58"E
92	0.075	0.178	0.193	0.008	N67°19'49"E
93	0.084	0.192	0.210	0.009	N66°21'04"E
500	0.005	0.002	0.005	0.002	N02°17'33"E
501	0.034	0.006	0.034	0.006	N01°11'33"E
502	0.005	0.007	0.007	0.005	N68°19'21"E
503	0.005	0.005	0.005	0.005	N78°17'14"E
504	0.003	0.004	0.005	0.002	N61°38'37"E
505	0.007	0.007	0.009	0.005	S46°46'51"E

REGISTERED  
PROFESSIONAL  
LAND SURVEYOR  
*Christine V. Blevins*  
OREGON  
JULY 19, 1994  
CHRISTINE V. BLEVINS  
2469

RENEWAL DATE 12-31-99

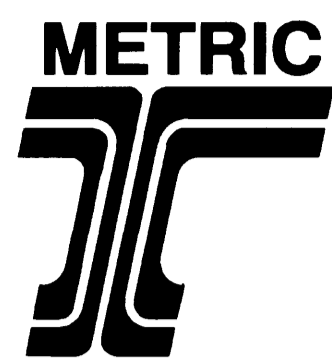
CHRISTINE V. BLEVINS P.L.S.  
Oregon Department of Transportation  
3500 N.W. Stewart Parkway  
Roseburg, Oregon 97470

NOTE: ALL COORDINATES ON THIS MAP ARE METRIC,  
ON A LOCAL DATUM PLANE, WHICH REPRESENTS TRUE  
GROUND DISTANCES. TO CONVERT COORDINATES TO  
ENGLISH, DIVIDE THE METRIC COORDINATES BY  
0.3048

COUNTY SURVEYORS FILE DATA  
DO NOT REMOVE FROM OFFICE

OREGON DEPARTMENT OF TRANSPORTATION  
**HORIZONTAL CONTROL, RECOVERY,  
AND RETRACEMENT MAP**  
MYRTLE CREEK - CANYONVILLE SEC. (1-5)  
DOUGLAS COUNTY

000T  
3500 Stewart Parkway, Suite 140  
Roseburg, Oregon 97470



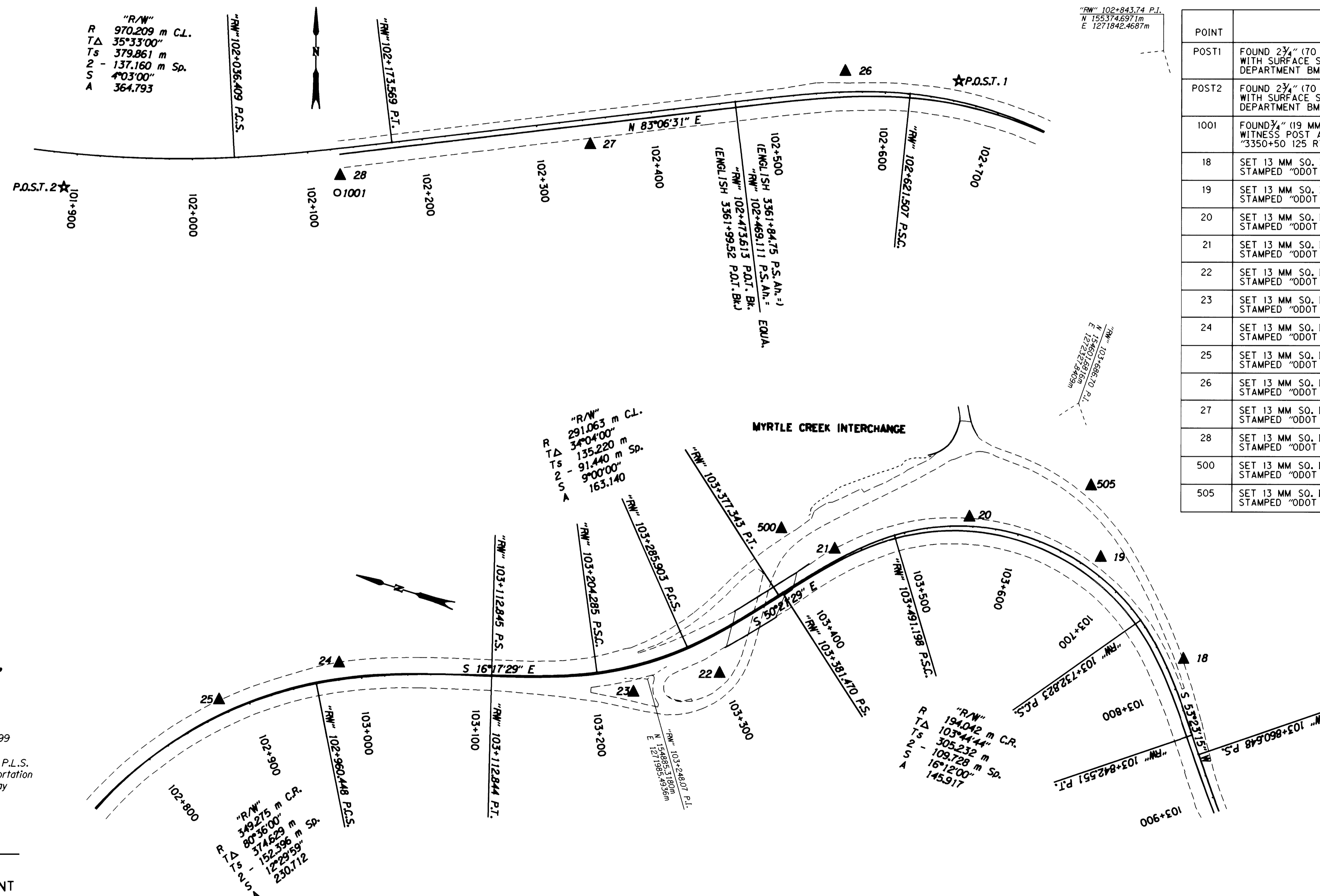
# HORIZONTAL CONTROL, RECOVERY AND RETRACEMENT MAP

FOR THE OREGON DEPARTMENT OF TRANSPORTATION  
 LOCATED IN THE SE 1/4 OF SECTION 20, THE SW 1/4 OF SECTION 21,  
 AND THE NW 1/4 OF SECTION 28, T. 29 S., R. 5 W., W.M.  
 DOUGLAS COUNTY

FILED  
 Date: 4-29-1999 By: J.P.  
 This survey consists of: 11 Pgs.  
 Map: M129-392  
 Narrative:  
 Corner Rpt: (cs 44/19)  
 (previously filed control reports)  
 DOUGLAS COUNTY  
 SURVEYOR J.P.

## CONTROL NETWORK AND FOUND MONUMENTS

POINT	DESCRIPTION	NORTHING	EASTING	ELEV.
POST1	FOUND 2 3/4" (70 MM) BRASS DISK SET IN CONC. FLUSH WITH SURFACE STAMPED "STATE HIGHWAY DEPARTMENT BM NO. P.O.S.T. ELEVATION 614.11"	155348.239	1271664.711	189.029
POST2	FOUND 2 3/4" (70 MM) BRASS DISK SET IN CONC. FLUSH WITH SURFACE STAMPED "STATE HIGHWAY DEPARTMENT BM NO. P.O.S.T. ELEVATION 850 +"	155254.406	1270888.341	185.933
1001	FOUND 3/4" (19 MM) I.R. 180 MM ABOVE SURFACE. WITNESS POST AND PADDLE NEARBY MARKED "3350+50 125 RT SHRW" (GOOD CONDITION)	155249.948	1271125.485	
18	SET 13 MM SQ. I.R. 0.76 M LONG WITH 38 MM ALUM. CAP STAMPED "ODOT HORIZ. CONTROL 18"	154447.272	1272144.229	201.983
19	SET 13 MM SQ. I.R. 0.76 M LONG WITH 38 MM ALUM. CAP STAMPED "ODOT HORIZ. CONTROL 19"	154542.966	1272207.188	206.369
20	SET 13 MM SQ. I.R. 0.76 M LONG WITH 38 MM ALUM. CAP STAMPED "ODOT HORIZ. CONTROL 20"	154662.329	1272205.748	199.897
21	SET 13 MM SQ. I.R. 0.76 M LONG WITH 38 MM ALUM. CAP STAMPED "ODOT HORIZ. CONTROL 21"	154765.376	1272143.840	197.428
22	SET 13 MM SQ. I.R. 0.76 M LONG WITH 38 MM ALUM. CAP STAMPED "ODOT HORIZ. CONTROL 22"	154827.653	1272010.225	195.316
23	SET 13 MM SQ. I.R. 0.76 M LONG WITH 38 MM ALUM. CAP STAMPED "ODOT HORIZ. CONTROL 23"	154893.846	1271971.949	194.086
24	SET 13 MM SQ. I.R. 0.76 M LONG WITH 38 MM ALUM. CAP STAMPED "ODOT HORIZ. CONTROL 24"	155144.944	1271918.439	191.017
25	SET 13 MM SQ. I.R. 0.76 M LONG WITH 38 MM ALUM. CAP STAMPED "ODOT HORIZ. CONTROL 25"	155234.236	1271856.288	190.166
26	SET 13 MM SQ. I.R. 0.76 M LONG WITH 38 MM ALUM. CAP STAMPED "ODOT HORIZ. CONTROL 26"	155357.520	1271566.098	188.889
27	SET 13 MM SQ. I.R. 0.76 M LONG WITH 38 MM ALUM. CAP STAMPED "ODOT HORIZ. CONTROL 27"	155293.302	1271344.788	185.002
28	SET 13 MM SQ. I.R. 0.76 M LONG WITH 38 MM ALUM. CAP STAMPED "ODOT HORIZ. CONTROL 28"	155265.879	1271127.919	184.376
500	SET 13 MM SQ. I.R. 0.76 M LONG WITH 38 MM ALUM. CAP STAMPED "ODOT HORIZ. CONTROL 500"	154808.382	1272145.561	
505	SET 13 MM SQ. I.R. 0.76 M LONG WITH 38 MM ALUM. CAP STAMPED "ODOT HORIZ. CONTROL 505"	154568.484	1272258.131	

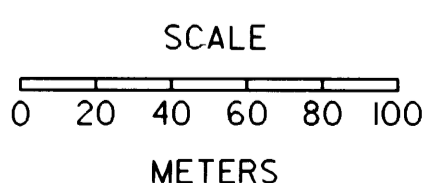


REGISTERED  
 PROFESSIONAL  
 LAND SURVEYOR  
 Christine V. Blewins  
 OREGON  
 JULY 19, 1994  
 CHRISTINE V. BLEVINS  
 2669

RENEWAL DATE 12-31-99  
 CHRISTINE V. BLEVINS P.L.S.  
 Oregon Department of Transportation  
 3500 N.W. Stewart Parkway  
 Roseburg, Oregon 97470

LEGEND

- ▲ SET MONUMENT
- FOUND MONUMENT
- ★ FOUND GPS MONUMENT



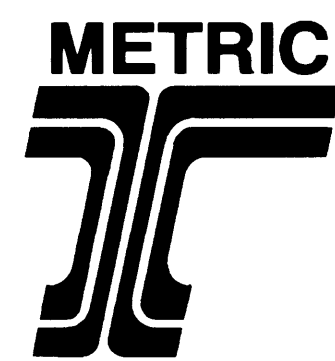
Scale: 1:2000

NOTE: ALL COORDINATES ON THIS MAP ARE METRIC, ON A LOCAL DATUM PLANE, WHICH REPRESENTS TRUE GROUND DISTANCES. TO CONVERT COORDINATES TO ENGLISH, DIVIDE THE METRIC COORDINATES BY 0.3048

COUNTY SURVEYORS FILE DATA  
 DO NOT REMOVE FROM OFFICE

OREGON DEPARTMENT OF TRANSPORTATION  
 HORIZONTAL CONTROL, RECOVERY,  
 AND RETRACEMENT MAP  
 MYRTLE CREEK - CANYONVILLE SEC. (1-5)  
 DOUGLAS COUNTY

ODOT  
 3500 Stewart Parkway, Suite 140  
 Roseburg, Oregon 97470

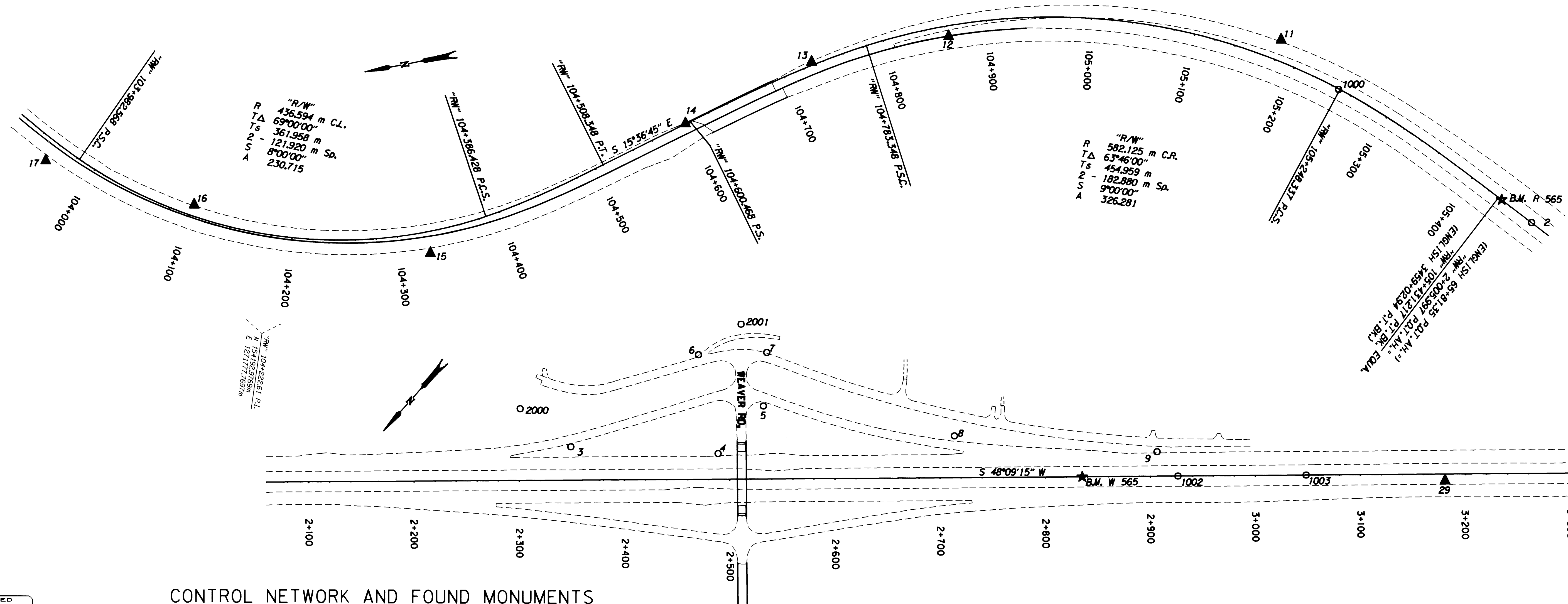


# HORIZONTAL CONTROL, RECOVERY AND RETRACEMENT MAP

FOR THE OREGON DEPARTMENT OF TRANSPORTATION  
 LOCATED IN THE NW 1/4 & SW 1/4 OF SECTION 28, THE NW 1/4 OF SECTION 33,  
 AND THE NE 1/4 & SE 1/4 OF SECTION 32, T. 29 S., R. 5 W., W.M.  
 DOUGLAS COUNTY

"R/W" 105+055.43 P.L.  
 N 153317.4807m  
 E 121702.4181m

FILED  
 Date: 4-29-1999 By: JP  
 This survey consists of 11 sheets.  
 Map: M129-39 D  
 Narrative:  
 Corner Rpt.: (23.65/13)  
 (previously filed control reports)  
 DOUGLAS COUNTY  
 SURVEYOR JR

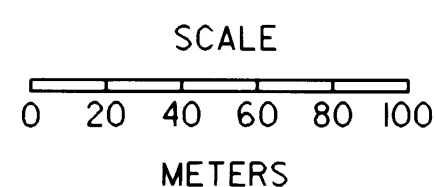


REGISTERED  
 PROFESSIONAL  
 LAND SURVEYOR  
 Christine V. Blevis  
 OREGON  
 JULY 19, 1994  
 CHRISTINE V. BLEVINS  
 2669

RENEWAL DATE 12-31-99  
 CHRISTINE V. BLEVINS P.L.S.  
 Oregon Department of Transportation  
 3500 N.W. Stewart Parkway  
 Roseburg, Oregon 97470

LEGEND

- ▲ SET MONUMENT
- FOUND MONUMENT
- ★ FOUND GPS MONUMENT



SCALE: 1:2000

CONTROL NETWORK AND FOUND MONUMENTS

POINT	DESCRIPTION	NORTHING	EASTING	ELEV.
R565	FOUND 2 3/4" (70 MM) BRASS DISK SET IN CONC. FLUSH WITH SURFACE STAMPED "STATE HIGHWAY DEPARTMENT BM NO. R565 1958 65+93.08 P.O.T."	153011.581	1271680.838	
W565	FOUND 2 3/4" (70 MM) BRASS DISK SET IN CONC. AT STA. 93+00.00 P.O.T. STAMPED "STATE HIGHWAY DEPARTMENT BM NO. W565 1958 ELEVATION FEET"	152461.028	1271065.944	187.352
2	FOUND 5/8" (16 MM) I.R. WITH A 1 1/2" (38 MM) DIA. ALUM. CAP STAMPED "OREG. STATE HWY DIV." @ STA. L4 3460+12.63 P.O.T. BK. /67+09.98 P.O.T. AH.	152987.823	1271654.308	187.504
1000	FOUND 5/8" (16 MM) I.R. WITH A 1 1/2" (38 MM) DIA. ALUM. CAP STAMPED "OREG. STATE HWY DIV." @ STA. L4 3452+80.28 P.C.S.	153144.050	1271813.329	188.420
1002	FOUND 5/8" (16 MM) I.R. WITH A 1 1/2" (38 MM) DIA. ALUM. CAP STAMPED "OREG. STATE HWY DIV." 100 MM BELOW SURFACE STA. 90+00.00 P.O.T. (GOOD CONDITION)	152400.032	1270997.825	187.149
1003	FOUND 5/8" (16 MM) I.R. WITH A 1 1/2" (38 MM) DIA. ALUM. CAP STAMPED "OREG. STATE HWY DIV." FLUSH WITH SURFACE STA. 100+00.00 P.O.T. (GOOD CONDITION)	152318.654	1270906.966	187.653
3	FOUND 13 MM SO. I.R. WITH 38 MM ALUM. CAP STAMPED "ODOT HORIZ. CONTROL 3" FLUSH W/SURFACE (GOOD CONDITION)	152761.379	1271449.078	189.186
4	FOUND 13 MM SO. I.R. WITH 38 MM ALUM. CAP STAMPED "ODOT HORIZ. CONTROL 4" FLUSH W/SURFACE (GOOD CONDITION)	152673.550	1271340.023	187.767
5	FOUND 13 MM SO. I.R. WITH 38 MM ALUM. CAP STAMPED "ODOT HORIZ. CONTROL 5" FLUSH W/SURFACE (GOOD CONDITION)	152610.753	1271338.041	193.367
6	FOUND 13 MM SO. I.R. WITH 38 MM ALUM. CAP STAMPED "ODOT HORIZ. CONTROL 6" FLUSH W/SURFACE (GOOD CONDITION)	152615.177	1271416.507	193.225
2001	FOUND 5/8" (16 MM) I.R. WITH A 1 1/2" (38 MM) DIA. ALUM. CAP, FLUSH WITH SURFACE, STAMPED "OREG. STATE HWY. DIV." (GOOD CONDITION)	152566.741	1271405.501	

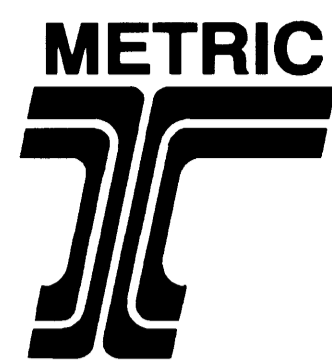
CONTROL NETWORK AND FOUND MONUMENTS

POINT	DESCRIPTION	NORTHING	EASTING	ELEV.
7	FOUND 13 MM SO. I.R. WITH 38 MM ALUM. CAP STAMPED "ODOT HORIZ. CONTROL 7" FLUSH W/SURFACE (GOOD CONDITION)	152570.563	1271369.395	193.855
8	FOUND 13 MM SO. I.R. WITH 38 MM ALUM. CAP STAMPED "ODOT HORIZ. CONTROL 8" FLUSH W/SURFACE (GOOD CONDITION)	152512.053	1271183.011	187.774
9	FOUND 13 MM SO. I.R. WITH 38 MM ALUM. CAP STAMPED "ODOT HORIZ. CONTROL 9" FLUSH W/SURFACE (GOOD CONDITION)	152395.856	1271028.084	188.610
11	SET 13 MM SO. I.R. 0.76 M LONG WITH 38 MM DIA. ALUM. CAP STAMPED "ODOT HORIZ. CONTROL 11"	153188.713	1271871.806	190.036
12	SET 13 MM SO. I.R. 0.76 M LONG WITH 38 MM DIA. ALUM. CAP STAMPED "ODOT HORIZ. CONTROL 12"	153498.733	1271935.070	192.805
13	SET 13 MM SO. I.R. 0.76 M LONG WITH 38 MM DIA. ALUM. CAP STAMPED "ODOT HORIZ. CONTROL 13"	153631.249	1271935.972	195.300
14	SET 13 MM SO. I.R. 0.76 M LONG WITH 38 MM DIA. ALUM. CAP STAMPED "ODOT HORIZ. CONTROL 14"	153760.176	1271900.563	197.350
15	SET 13 MM SO. I.R. 0.76 M LONG WITH 38 MM DIA. ALUM. CAP STAMPED "ODOT HORIZ. CONTROL 15"	154021.052	1271824.871	202.968
16	SET 13 MM SO. I.R. 0.76 M LONG WITH 38 MM DIA. ALUM. CAP STAMPED "ODOT HORIZ. CONTROL 16"	154232.930	1271912.349	202.095
17	SET 13 MM SO. I.R. 0.76 M LONG WITH 38 MM DIA. ALUM. CAP STAMPED "ODOT HORIZ. CONTROL 17"	154363.227	1271980.533	204.057
29	SET 13 MM SO. I.R. 0.76 M LONG WITH 38 MM DIA. ALUM. CAP STAMPED "ODOT HORIZ. CONTROL 29"	152234.149	1270805.393	188.541
2000	FOUND 5/8" (16 MM) I.R. 30 MM ABOVE SURFACE, R/W STA. 75+50.00. 225 FT. (68.58 M) LT. (GOOD CONDITION)	152765.946	1271509.436	

COUNTY SURVEYORS FILE DATA  
 DO NOT REMOVE FROM OFFICE

NOTE: ALL COORDINATES ON THIS MAP ARE METRIC, ON A LOCAL DATUM PLANE, WHICH REPRESENTS TRUE GROUND DISTANCES. TO CONVERT COORDINATES TO ENGLISH, DIVIDE THE METRIC COORDINATES BY 0.3048

OREGON DEPARTMENT OF TRANSPORTATION  
**HORIZONTAL CONTROL, RECOVERY,  
 AND RETRACEMENT MAP**  
 MYRTLE CREEK - CANYONVILLE SEC. (1-5)  
 DOUGLAS COUNTY  
 ODOT  
 3500 Stewart Parkway, Suite 140  
 Roseburg, Oregon 97470



# HORIZONTAL CONTROL, RECOVERY AND RETRACEMENT MAP

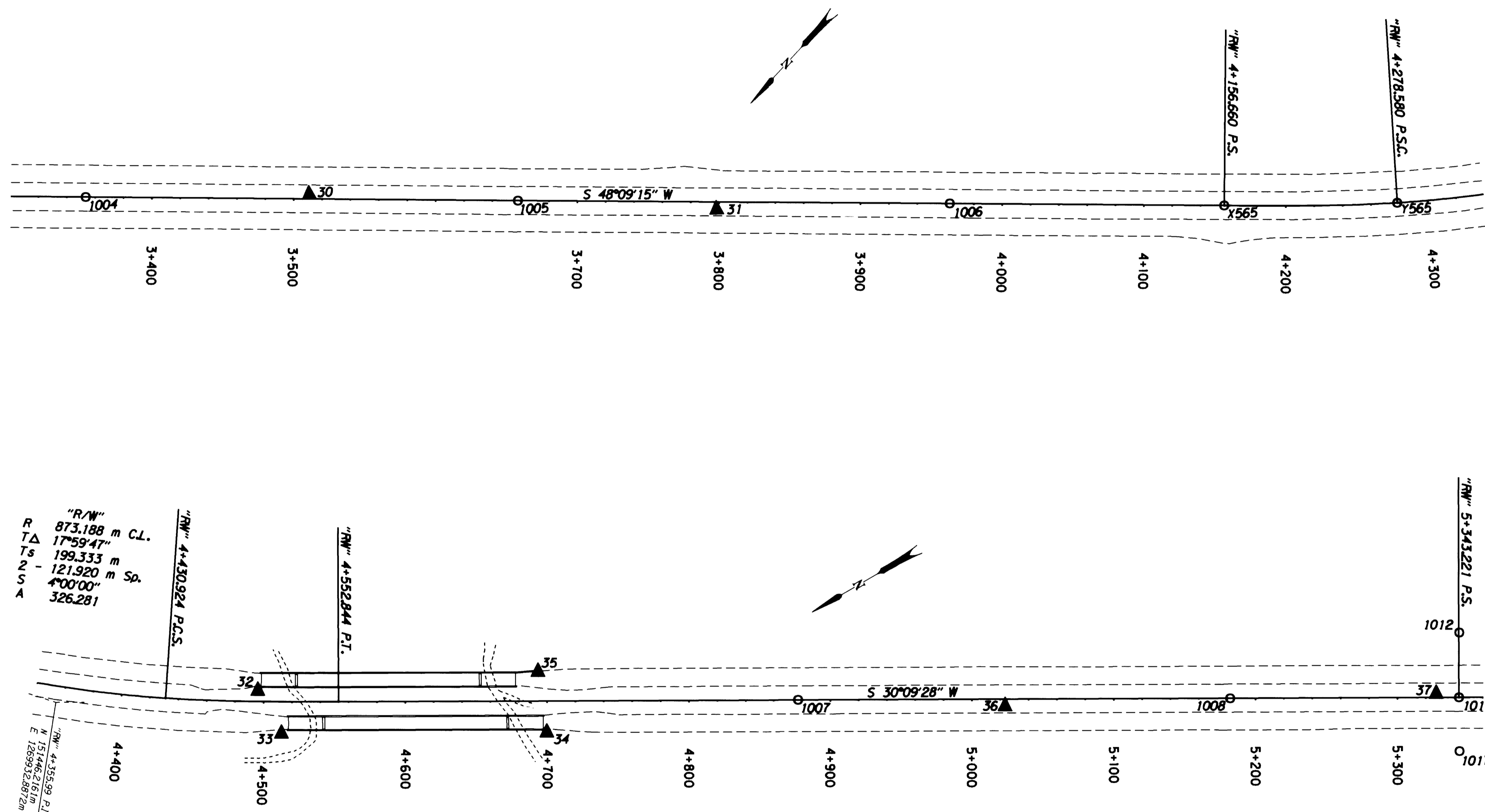
FOR THE OREGON DEPARTMENT OF TRANSPORTATION

LOCATED IN THE SW 1/4 OF SECTION 32, T. 29 S., R. 5 W. AND  
THE NW 1/4 OF SECTION 5 & THE NE 1/4 & SE 1/4 OF SECTION 6, T. 30 S., R. 5 W., W.M.  
DOUGLAS COUNTY

FILED  
Date: 4-29-1999 By: JP  
This survey consists of 11 Pgs.  
Map: M129-39E  
Narrative: \_\_\_\_\_  
Corner Rpt: (CS 65/12)  
(previously filed control reposs)  
DOUGLAS COUNTY  
SURVEYOR JP

## CONTROL NETWORK AND FOUND MONUMENTS

POINT	DESCRIPTION	NORTHING	EASTING	ELEV.
X565	FOUND 2 3/4" (70 MM) BRASS DISK SET IN CONC. 0.10 M BELOW SURFACE STAMPED "STATE HIGHWAY DEPARTMENT BM NO. X565 1958 ELEVATION FEET" (GOOD CONDITION)	151579.316	1270081.512	190.355
Y565	FOUND 2 3/4" (70 MM) BRASS DISK SET IN CONC. 0.15 M BELOW SURFACE STAMPED "STATE HIGHWAY DEPARTMENT BM NO. Y565 1958 ELEVATION FEET" (GOOD CONDITION)	151495.860	1269992.619	191.047
1004	FOUND 5/8" (16 MM) I.R. WITH A 1 1/2" (38 MM) DIA. ALUM. CAP STAMPED "OREG. STATE HWY DIV. 1/2" FLUSH W/SURFACE STA. 110+00.00 P.O.T. (FAIR CONDITION)	152115.237	1270679.890	187.995
1005	FOUND 5/8" (16 MM) I.R. WITH A 1 1/2" (38 MM) DIA. ALUM. CAP STAMPED "OREG. STATE HWY DIV. 1/2" STA. 120+00.00 P.O.T.	151911.829	1270452.777	188.390
1006	FOUND 5/8" (16 MM) I.R. WITH A 1 1/2" (38 MM) DIA. ALUM. CAP STAMPED "OREG. STATE HWY DIV. 1/2" STA. 130+00.00 P.O.T.	151708.483	1270225.747	189.353
1007	FOUND 5/8" (16 MM) I.R. WITH A 1 1/2" (38 MM) DIA. ALUM. CAP STAMPED "OREG. STATE HWY DIV. 1/2" 0.10 M BELOW SURFACE STA. 160+00.00 P.O.T. (GOOD CONDITION)	150993.403	1269669.789	193.317
1008	FOUND 5/8" (16 MM) I.R. WITH A 1 1/2" (38 MM) DIA. ALUM. CAP STAMPED "OREG. STATE HWY DIV. 1/2" FLUSH W/SURFACE STA. 170+00.00 P.O.T. (GOOD CONDITION)	150729.828	1269516.641	193.401
1012	FOUND 5/8" (16 MM) I.R. 20 MM ABOVE SURFACE, R/W STA. 175+29.92 P.S., 38.10 M (125 FT.) LT. (FAIR CONDITION)	150567.273	1269475.072	
1015	FOUND 5/8" (16 MM) I.R. WITH A 1 1/2" (38 MM) DIA. ALUM. CAP STAMPED "OREG. STATE HWY DIV. 1/2" FLUSH W/SURFACE, STA. 175+29.92 P.C. (GOOD CONDITION)	150590.233	1269435.535	193.442
1017	FOUND 3/4" (19 MM) I.R. FLUSH W/SURFACE, R/W STA. 175+29.92 P.S., 38.10 M (125 FT.) RT. (GOOD CONDITION)	150609.377	1269402.594	
30	SET 13 MM SQ. I.R. 0.76 M LONG WITH 38 MM DIA. ALUM. CAP STAMPED "ODOT HORIZ. CONTROL 30"	152006.743	1270565.624	188.978
31	SET 13 MM SQ. I.R. 0.76 M LONG WITH 38 MM DIA. ALUM. CAP STAMPED "ODOT HORIZ. CONTROL 31"	151821.326	1270345.970	189.269
32	SET 13 MM SQ. I.R. 0.76 M LONG WITH 38 MM DIA. ALUM. CAP STAMPED "ODOT HORIZ. CONTROL 32"	151318.515	1269869.401	193.911
33	SET 13 MM SQ. I.R. 0.76 M LONG WITH 38 MM DIA. ALUM. CAP STAMPED "ODOT HORIZ. CONTROL 33"	151319.281	1269834.806	194.040
34	SET 13 MM SQ. I.R. 0.76 M LONG WITH 38 MM DIA. ALUM. CAP STAMPED "ODOT HORIZ. CONTROL 34"	151157.509	1269740.892	194.286
35	SET 13 MM SQ. I.R. 0.76 M LONG WITH 38 MM DIA. ALUM. CAP STAMPED "ODOT HORIZ. CONTROL 35"	151141.208	1269781.063	194.162
36	SET 13 MM SQ. I.R. 0.76 M LONG WITH 38 MM DIA. ALUM. CAP STAMPED "ODOT HORIZ. CONTROL 36"	150868.817	1269593.274	193.862
37	SET 13 MM SQ. I.R. 0.76 M LONG WITH 38 MM DIA. ALUM. CAP STAMPED "ODOT HORIZ. CONTROL 37"	150602.368	1269447.130	194.230



REGISTERED PROFESSIONAL LAND SURVEYOR

Christine V. Blewins  
OREGON JULY 19, 1994  
CHRISTINE V. BLEWINS 2669

RENEWAL DATE 12-31-99

CHRISTINE V. BLEWINS P.L.S.  
Oregon Department of Transportation  
3500 N.W. Stewart Parkway  
Roseburg, Oregon 97470

LEGEND

- ▲ SET MONUMENT
- FOUND MONUMENT
- ★ FOUND GPS MONUMENT

SCALE

0 20 40 60 80 100  
METERS

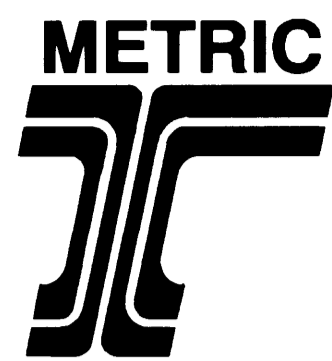
SCALE: 1:2000

**COUNTY SURVEYORS FILE DATA  
DO NOT REMOVE FROM OFFICE**

OREGON DEPARTMENT OF TRANSPORTATION  
**HORIZONTAL CONTROL, RECOVERY,  
AND RETRACEMENT MAP**  
MYRTLE CREEK - CANYONVILLE SEC. (1-5)  
DOUGLAS COUNTY

ODOT  
3500 Stewart Parkway, Suite 140  
Roseburg, Oregon 97470

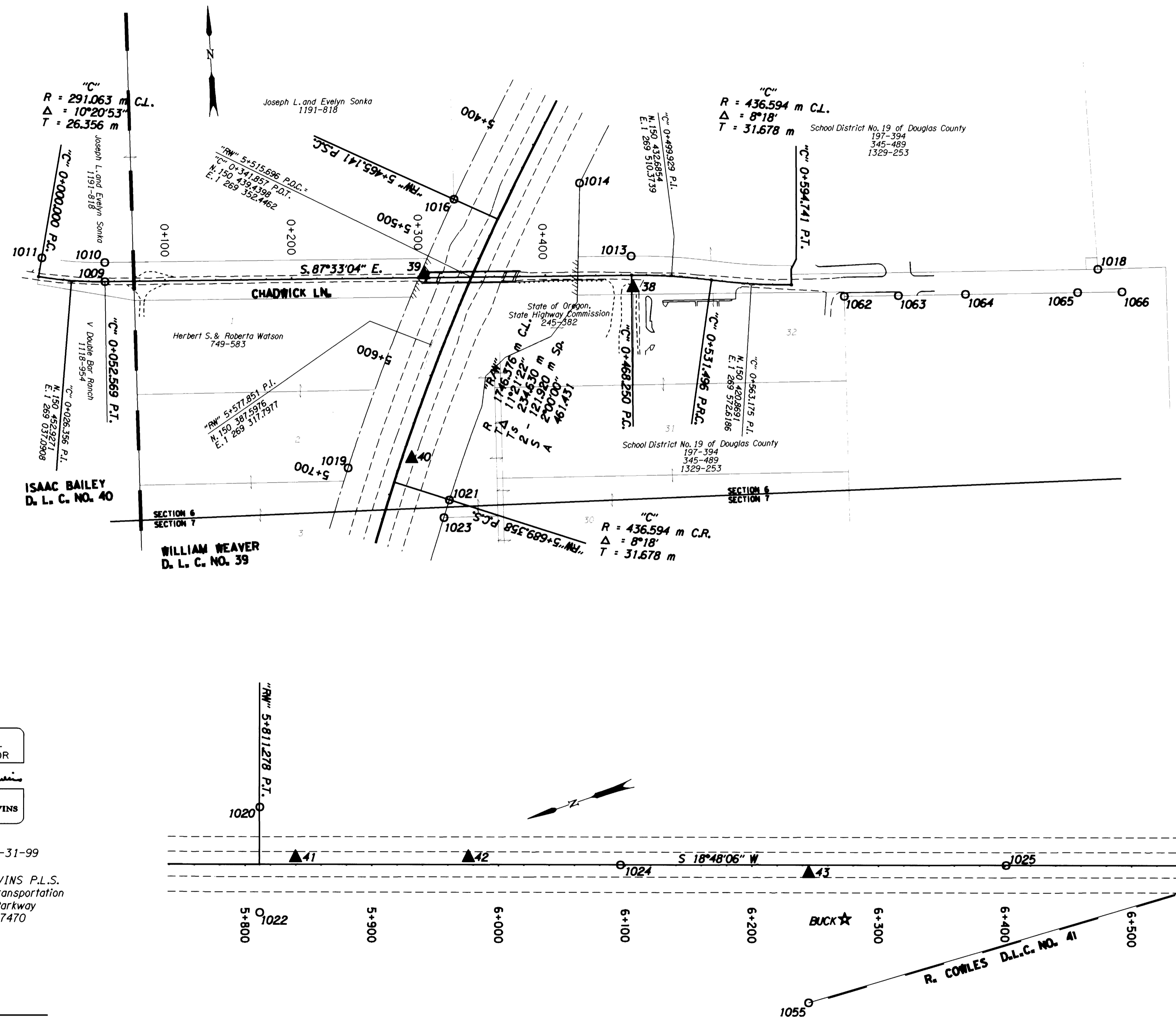
NOTE: ALL COORDINATES ON THIS MAP ARE METRIC, ON A LOCAL DATUM PLANE, WHICH REPRESENTS TRUE GROUND DISTANCES. TO CONVERT COORDINATES TO ENGLISH, DIVIDE THE METRIC COORDINATES BY 0.3048



# HORIZONTAL CONTROL, RECOVERY AND RETRACEMENT MAP

FOR THE OREGON DEPARTMENT OF TRANSPORTATION  
LOCATED IN THE SE 1/4 OF SECTION 6 AND  
THE NE 1/4 OF SECTION 7, T. 30 S., R. 5 W., W.M.  
DOUGLAS COUNTY

FILED  
Date: 4-29-1999 By: \_\_\_\_\_  
This survey consists of: 11 Pgs.  
Map: M129-39 F  
Narrative: \_\_\_\_\_  
Corner Rpt: (CS 65/19)  
(previously filed control reports)  
DOUGLAS COUNTY  
SURVEYOR JR



REGISTERED  
PROFESSIONAL  
LAND SURVEYOR  
*Christine V. Blevins*  
OREGON  
JULY 19, 1994  
CHRISTINE V. BLEVINS  
2669

RENEWAL DATE 12-31-99  
CHRISTINE V. BLEVINS P.L.S.  
Oregon Department of Transportation  
3500 N.W. Stewart Parkway  
Roseburg, Oregon 97470

LEGEND  
▲ SET MONUMENT  
○ FOUND MONUMENT  
★ FOUND GPS MONUMENT  
SCALE  
0 20 40 60 80 100  
METERS

SCALE: 1:2000

NOTE: ALL COORDINATES ON THIS MAP ARE METRIC,  
ON A LOCAL DATUM PLANE, WHICH REPRESENTS TRUE  
GROUND DISTANCES. TO CONVERT COORDINATES TO  
ENGLISH, DIVIDE THE METRIC COORDINATES BY  
0.3048

## CONTROL NETWORK AND FOUND MONUMENTS

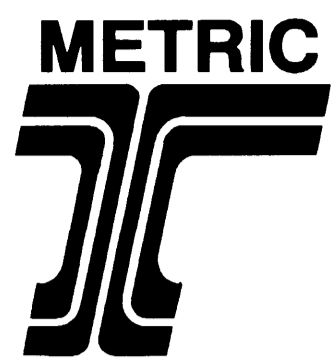
POINT	DESCRIPTION	NORTHING	EASTING	ELEV.
1009	FOUND BRIDGE SPIKE SET IN A.C. AT CENTERLINE OF CHADWICK LANE STA. 1+72.50 P.T. (GOOD CONDITION)	150451.807	1269063.419	194.793
1010	FOUND 3/4" (16 MM) I.R. 19 MM ABOVE SURFACE, STA. 1+72.50 P.T., 15.24 M (50 FT.) LT. (GOOD CONDITION) (DCSO MAP M96-15)	150467.027	1269064.072	
1011	FOUND 3/4" (16 MM) I.R., STA. 0+00.00 P.C. 15.24 M (50 FT.) LT. (POOR CONDITION) (DCSO *M96-15)	150473.635	1269014.766	
1013	FOUND 3/4" (16 MM) I.R. (POOR CONDITION) (C.S. 51/284-5)	150449.265	1269479.376	
1014	FOUND 3/4" (16 MM) I.R., 20 MM ABOVE SURFACE, R/W STA. 177+50.00, 38.10 M (125 FT.) LT. (GOOD CONDITION) (C.S. 51/284-5)	150509.605	1269441.923	
1016	FOUND 1/2" (19 MM) I.R. 20 MM ABOVE SURFACE, R/W STA. 179+29.92 P.C.S., 38.10 M (125 FT.) RT. (GOOD CONDITION)	150502.069	1269341.943	
1018	FOUND 1" (25 MM) O.D. IRON PIPE 0.30 M ABOVE SURFACE (GOOD CONDITION) (C.S. 51/284-5)	150418.622	1269846.628	
1019	FOUND 3/4" (16 MM) I.R., 0.20 M ABOVE SURFACE, R/W STA. 186+65.50 P.C.S., 38.10 M (125 FT.) RT. (GOOD CONDITION)	150293.684	1269247.105	
1020	FOUND 3/4" (19 MM) I.R. 0.30 M ABOVE SURFACE, R/W STA. 190+65.50 P.T., 45.72 M (150 FT.) LT. (GOOD CONDITION)	150150.512	1269285.406	
1021	FOUND 3/4" (16 MM) I.R., 0.30 M ABOVE SURFACE, R/W STA. 186+65.50 P.C.S., 45.72 M (150 FT.) LT. (GOOD CONDITION)	150263.932	1269325.486	
1022	FOUND 3/4" (16 MM) I.R., 0.50 M ABOVE SURFACE, R/W STA. 190+65.50 P.T., 38.10 M (125 FT.) RT. (GOOD CONDITION)	150177.500	1269206.057	
1023	FOUND 3/4" I.R. WITH 32 MM DIA. PLASTIC CAP STAMPED "R. BROWN PLS 2891" 0.30 M ABOVE SURFACE (GOOD CONDITION) (C.S. 1994-0113A)	150250.287	1269320.456	
1024	FOUND 3/4" (16 MM) I.R. WITH A 1 1/2" (38 MM) DIA. ALUM. CAP STAMPED "OREG. STATE HWY DIV." 0.10 M ABOVE SURFACE STA. 200+00.00 (GOOD CONDITION)	149895.816	1269150.365	194.117
1025	FOUND 3/4" (16 MM) I.R. WITH A 1 1/2" (38 MM) DIA. ALUM. CAP STAMPED "OREG. STATE HWY DIV." FLUSH W/SURFACE STA. 210+00.00 (GOOD CONDITION)	149607.396	1269052.177	193.963
1055	FOUND 1 1/4" (32 MM) STEEL SHAFT WITH A 4" (102 MM) GEAR ON TOP @ N.E. CORNER OF DLC 41, 50 MM BELOW SURFACE (GOOD CONDITION)	149789.951	1268999.279	
1062	FOUND 1 1/2" (38 MM) O.D. IRON PIPE 0.30 M BELOW SURFACE (POOR CONDITION) (DCSO VOL. 9, PG.41 - HATFIELD TRACTS)	150408.023	1269645.438	
1063	FOUND 1 1/2" (38 MM) O.D. IRON PIPE FLUSH W/SURFACE (GOOD CONDITION) (DCSO VOL. 9, PG.41 - HATFIELD TRACTS)	150406.411	1269688.109	
1064	FOUND 1/2" (13 MM) IRON REBAR 0.10 M BELOW SURFACE (FAIR CONDITION) (DCSO PLAT OF MIDWAY TRACTS)	150404.465	1269741.379	
1065	FOUND 1/2" (13 MM) IRON REBAR 30 MM BELOW SURFACE (GOOD CONDITION) (DCSO PLAT OF MIDWAY TRACTS)	150400.998	1269829.670	
1066	FOUND 3/4" (19 MM) IRON REBAR 0.10 M BELOW SURFACE (FAIR CONDITION) (DCSO PLAT OF MIDWAY TRACTS)	150399.591	1269864.673	
BUCK	SET 75 MM DIA. BRASS DISK IN CONC. MONUMENT STAMPED "OREGON D.O.T. GEODETIC CONTROL PT. DO NOT DISTURB BUCK" (DCSO CS65/19-1)	149741.875	1269052.671	194.531
38	SET 13 MM SQ. I.R. 0.76 M LONG WITH 38 MM DIA. ALUM. CAP STAMPED "ODOT HORIZ. CONTROL 38"	150425.612	1269479.290	197.408
39	SET 13 MM SQ. I.R. 0.76 M LONG WITH 38 MM DIA. ALUM. CAP STAMPED "ODOT HORIZ. CONTROL 39"	150444.976	1269315.009	201.023
40	SET 13 MM SQ. I.R. 0.76 M LONG WITH 38 MM DIA. ALUM. CAP STAMPED "ODOT HORIZ. CONTROL 40"	150299.765	1269297.568	194.893
41	SET 13 MM SQ. I.R. 0.76 M LONG WITH 38 MM DIA. ALUM. CAP STAMPED "ODOT HORIZ. CONTROL 41"	150136.451	1269239.374	194.973
42	SET 13 MM SQ. I.R. 0.76 M LONG WITH 38 MM DIA. ALUM. CAP STAMPED "ODOT HORIZ. CONTROL 42"	150007.287	1269195.729	195.042
43	SET 13 MM SQ. I.R. 0.76 M LONG WITH 38 MM DIA. ALUM. CAP STAMPED "ODOT HORIZ. CONTROL 43"	149756.733	1269097.617	194.806

**COUNTY SURVEYORS FILE DATA  
DO NOT REMOVE FROM OFFICE**

OREGON DEPARTMENT OF TRANSPORTATION  
**HORIZONTAL CONTROL, RECOVERY,  
AND RETRACEMENT MAP**  
MYRTLE CREEK - CANYONVILLE SEC. (1-5)  
DOUGLAS COUNTY

ODOT  
3500 Stewart Parkway, Suite 140  
Roseburg, Oregon 97470





# HORIZONTAL CONTROL, RECOVERY AND RETRACEMENT MAP

FOR THE OREGON DEPARTMENT OF TRANSPORTATION  
 LOCATED IN THE NW 1/4, NE 1/4, & SE 1/4 OF SECTION 18, THE SW 1/4 OF SECTION 17, AND THE NE 1/4 OF SECTION 19, T. 30 S., R. 5 W., W.M. DOUGLAS COUNTY

FILED  
 Date: 4-23-1999 By: JP  
 This survey consists of: 11 Pgs.  
 Map: M127-37H  
 Narrative:  
 Corner Rpt: (CS 45/19)  
 (Previously filed control reports)  
 DOUGLAS COUNTY SURVEYOR

REGISTERED PROFESSIONAL LAND SURVEYOR

Christine V. Blewins

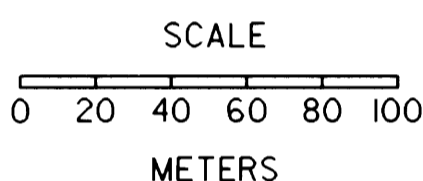
OREGON JULY 19, 1994 CHRISTINE V. BLEVINS 2669

RENEWAL DATE 12-31-99

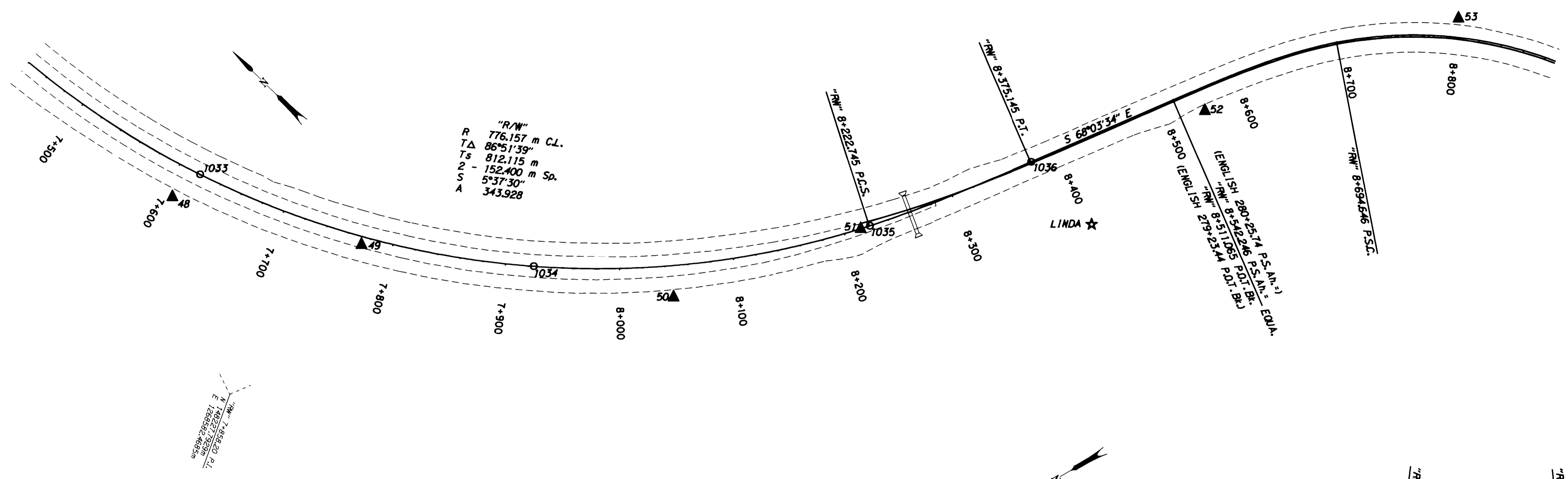
CHRISTINE V. BLEVINS P.L.S.  
 Oregon Department of Transportation  
 3500 N.W. Stewart Parkway  
 Roseburg, Oregon 97470

LEGEND

- ▲ SET MONUMENT
- FOUND MONUMENT
- ★ FOUND GPS MONUMENT



SCALE: 1:2000



CONTROL NETWORK AND FOUND MONUMENTS

POINT	DESCRIPTION	NORTHING	EASTING	ELEV.
1033	FOUND 5/8" (16 MM) I.R. WITH A 1 1/2" (38 MM) DIA. ALUM. CAP STAMPED "OREG. STATE HWY DIV." 0.03 M BELOW SURFACE STA. 250+00.00 (GOOD CONDITION)	148435.020	1268817.194	195.194
1034	FOUND 5/8" (16 MM) I.R. WITH A 1 1/2" (38 MM) DIA. ALUM. CAP STAMPED "OREG. STATE HWY DIV." 0.03 M BELOW SURFACE STA. 260+00.00 (GOOD CONDITION)	148170.488	1268964.992	195.548
1035	FOUND 5/8" (16 MM) I.R. WITH A 1 1/2" (38 MM) DIA. ALUM. CAP STAMPED "OREG. STATE HWY DIV." FLUSH W/SURFACE STA. 269+78.74 P.C.S. (GOOD CONDITION)	147985.704	1269196.789	197.139
1036	FOUND 5/8" (16 MM) I.R. WITH A 1 1/2" (38 MM) DIA. ALUM. CAP STAMPED "OREG. STATE HWY DIV." FLUSH W/SURFACE STA. 274+78.74 P.T. (GOOD CONDITION)	147924.211	1269336.106	197.789
48	SET 13 MM SO. I.R. 0.76 M LONG WITH 38 MM DIA. ALUM. CAP STAMPED "ODOT HORIZ. CONTROL 48"	148439.283	1268786.945	195.644
49	SET 13 MM SO. I.R. 0.76 M LONG WITH 38 MM DIA. ALUM. CAP STAMPED "ODOT HORIZ. CONTROL 49"	148292.086	1268873.204	195.648
50	SET 13 MM SO. I.R. 0.76 M LONG WITH 38 MM DIA. ALUM. CAP STAMPED "ODOT HORIZ. CONTROL 50"	148065.110	1269032.369	196.794
51	SET 13 MM SO. I.R. 0.76 M LONG WITH 38 MM DIA. ALUM. CAP STAMPED "ODOT HORIZ. CONTROL 51"	147990.472	1269190.120	197.352
52	SET 13 MM SO. I.R. 0.76 M LONG WITH 38 MM DIA. ALUM. CAP STAMPED "ODOT HORIZ. CONTROL 52"	147848.102	1269475.553	197.337
53	SET 13 MM SO. I.R. 0.76 M LONG WITH 38 MM DIA. ALUM. CAP STAMPED "ODOT HORIZ. CONTROL 53"	147746.481	1269688.991	200.049
54	SET 13 MM SO. I.R. 0.76 M LONG WITH 38 MM DIA. ALUM. CAP STAMPED "ODOT HORIZ. CONTROL 54"	147466.440	1269762.193	200.129
55	SET 13 MM SO. I.R. 0.76 M LONG WITH 38 MM DIA. ALUM. CAP STAMPED "ODOT HORIZ. CONTROL 55"	147252.372	1269616.948	198.226
56	SET 13 MM SO. I.R. 0.76 M LONG WITH 38 MM DIA. ALUM. CAP STAMPED "ODOT HORIZ. CONTROL 56"	147050.292	1269508.360	198.548
57	SET 13 MM SO. I.R. 0.76 M LONG WITH 38 MM DIA. ALUM. CAP STAMPED "ODOT HORIZ. CONTROL 57"	146769.413	1269271.542	203.896
LINDA	SET 75 MM DIA. BRASS DISK IN CONC. MONUMENT STAMPED "OREGON D.O.T. GEODETIC CONTROL PT. DO NOT DISTURB LINDA" (DCSO CS65/19-1)	147847.805	1269334.012	197.862

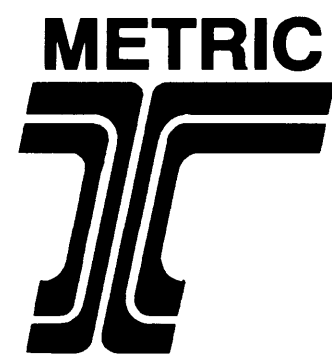


COUNTY SURVEYORS FILE DATA  
 DO NOT REMOVE FROM OFFICE

OREGON DEPARTMENT OF TRANSPORTATION  
**HORIZONTAL CONTROL, RECOVERY,  
 AND RETRACEMENT MAP**  
 MYRTLE CREEK - CANYONVILLE SEC. (1-5)  
 DOUGLAS COUNTY

ODOT  
 3500 Stewart Parkway, Suite 140  
 Roseburg, Oregon 97470

NOTE: ALL COORDINATES ON THIS MAP ARE METRIC, ON A LOCAL DATUM PLANE, WHICH REPRESENTS TRUE GROUND DISTANCES. TO CONVERT COORDINATES TO ENGLISH, DIVIDE THE METRIC COORDINATES BY 0.3048



# HORIZONTAL CONTROL, RECOVERY AND RETRACEMENT MAP

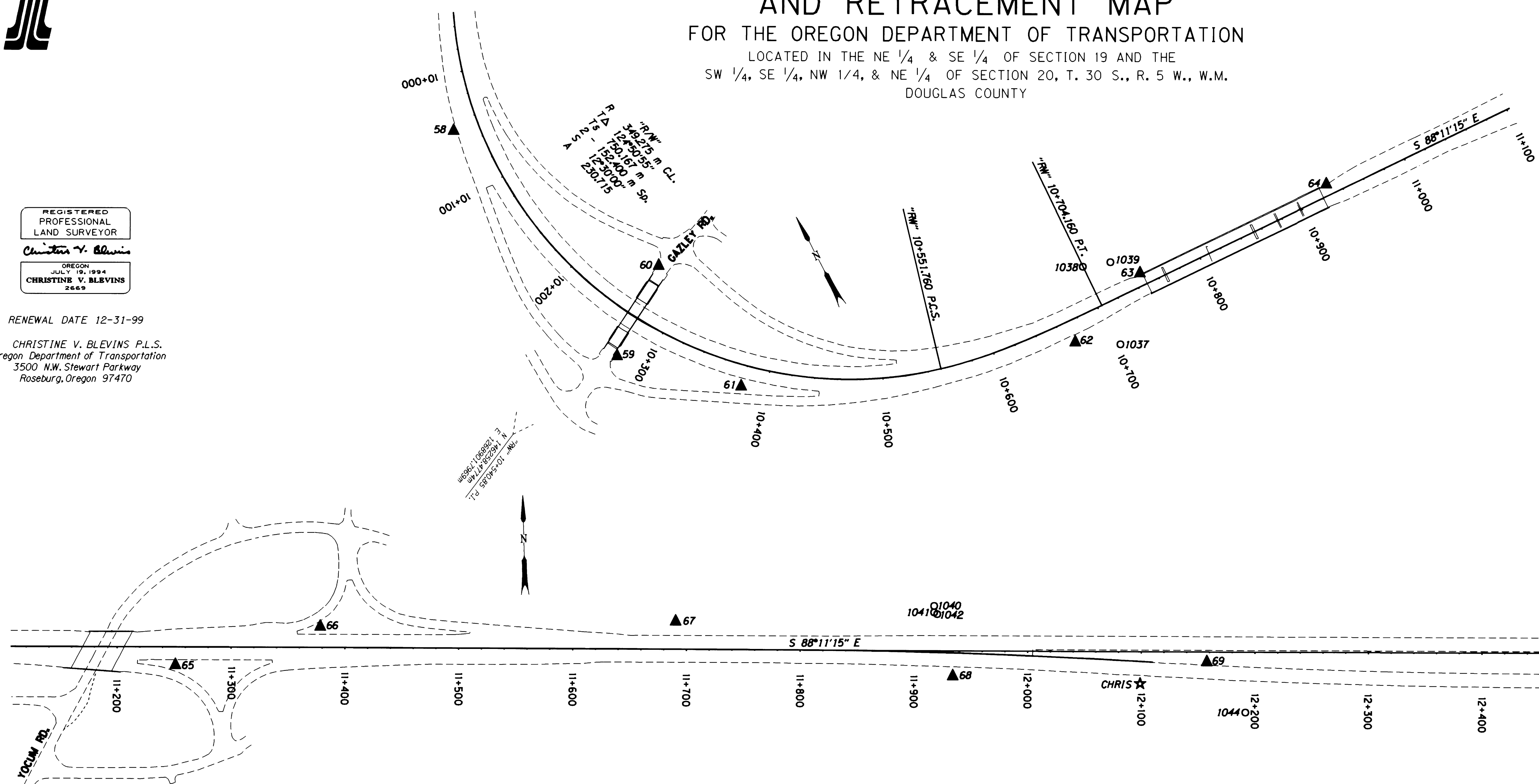
FOR THE OREGON DEPARTMENT OF TRANSPORTATION  
 LOCATED IN THE NE 1/4 & SE 1/4 OF SECTION 19 AND THE  
 SW 1/4, SE 1/4, NW 1/4, & NE 1/4 OF SECTION 20, T. 30 S., R. 5 W., W.M.  
 DOUGLAS COUNTY

FILED  
 Date: 4-29-1999 By: JP  
 This survey consists of: 11 Pgs.  
 Map: M129-391  
 Narrative:  
 Corner Rpt: (CS 65/12)  
 (previously filed control reports)  
 DOUGLAS COUNTY SURVEYOR

REGISTERED PROFESSIONAL LAND SURVEYOR  
 Christine V. Blevins  
 OREGON JULY 19, 1994  
 CHRISTINE V. BLEVINS 2669

RENEWAL DATE 12-31-99

CHRISTINE V. BLEVINS P.L.S.  
 Oregon Department of Transportation  
 3500 N.W. Stewart Parkway  
 Roseburg, Oregon 97470



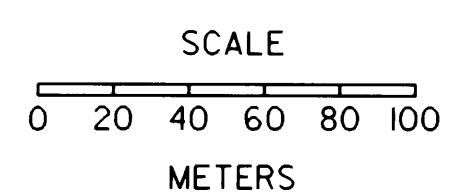
CONTROL NETWORK AND FOUND MONUMENTS

POINT	DESCRIPTION	NORTHING	EASTING	ELEV.
1037	FOUND 3/4" (19 MM) I.R. SET IN CONCRETE 30 MM ABOVE SURFACE R/W STA. 351+17.52 P.T. 38.1 M (125 FT.) RT. (GOOD CONDITION)	146196.673	1269650.052	
1038	FOUND 3/4" (19 MM) I.R. SET IN CONCRETE 30 MM ABOVE SURFACE R/W STA. 351+17.52 P.T. 38.1 M (125 FT.) LT. (GOOD CONDITION)	146272.852	1269652.444	
1039	FOUND 2 1/2" (64 MM) BRASS DISK 0.46 M ABOVE SURFACE STAMPED COUNTY SURVEYORS OFFICE 1960 T30S R5W 1/4S19 : S20" (GOOD CONDITION)	146265.171	1269675.806	
1040	FOUND 5/8" (16 MM) I.R. WITH A 1 1/2" (38 MM) DIA. ALUM. CAP STAMPED "OREG. STATE HWY DIV." FLUSH W/SURFACE R/W STA. 391+00.00 P.O.T. 38.1 M (125 FT.) LT. (GOOD CONDITION)	146235.937	1270865.545	
1041	FOUND 5/8" (16 MM) I.R., 60 MM ABOVE SURFACE, R/W STA. 391+00.00 P.O.T., 34.14 M (112 FT.) LT. (GOOD CONDITION)	146230.109	1270865.377	
1042	FOUND 2 1/2" (64 MM) BRASS DISK 0.13 M ABOVE SURFACE STAMPED COUNTY SURVEYORS OFFICE 1964 DLC44 INTL DEP. L55" (GOOD CONDITION)	146228.603	1270867.976	
1044	FOUND 5/8" (16 MM) I.R. SET IN CONCRETE 40 MM BELOW SURFACE R/W STA. 400+00.00 P.O.T. 53.34 M (175 FT.) LT. (GOOD CONDITION)	146134.392	1271136.674	
CHRIS	SET 75 MM DIA. BRASS DISK IN CONC. MONUMENT STAMPED "OREGON D.O.T. GEODETIC CONTROL PT. DO NOT DISTURB CHRIS"	146162.550	1271044.866	
58	SET 13 MM SQ. I.R. 0.76 M LONG WITH 38 MM DIA. ALUM. CAP STAMPED "ODOT HORIZ. CONTROL 58"	146636.563	1269218.587	207.685
59	SET 13 MM SQ. I.R. 0.76 M LONG WITH 38 MM DIA. ALUM. CAP STAMPED "ODOT HORIZ. CONTROL 59"	146393.589	1269253.709	218.219

CONTROL NETWORK AND FOUND MONUMENTS

POINT	DESCRIPTION	NORTHING	EASTING	ELEV.
60	SET 13 MM SQ. I.R. 0.76 M LONG WITH 38 MM DIA. ALUM. CAP STAMPED "ODOT HORIZ. CONTROL 60"	146447.450	1269323.058	217.232
61	SET 13 MM SQ. I.R. 0.76 M LONG WITH 38 MM DIA. ALUM. CAP STAMPED "ODOT HORIZ. CONTROL 61"	146319.323	1269337.848	213.421
62	SET 13 MM SQ. I.R. 0.76 M LONG WITH 38 MM DIA. ALUM. CAP STAMPED "ODOT HORIZ. CONTROL 62"	146217.841	1269616.306	213.268
63	SET 13 MM SQ. I.R. 0.76 M LONG WITH 38 MM DIA. ALUM. CAP STAMPED "ODOT HORIZ. CONTROL 63"	146245.687	1269695.051	212.373
64	SET 13 MM SQ. I.R. 0.76 M LONG WITH 38 MM DIA. ALUM. CAP STAMPED "ODOT HORIZ. CONTROL 64"	146238.778	1269876.492	212.731
65	SET 13 MM SQ. I.R. 0.76 M LONG WITH 38 MM DIA. ALUM. CAP STAMPED "ODOT HORIZ. CONTROL 65"	146203.040	1270197.828	213.104
66	SET 13 MM SQ. I.R. 0.76 M LONG WITH 38 MM DIA. ALUM. CAP STAMPED "ODOT HORIZ. CONTROL 66"	146233.217	1270325.866	213.473
67	SET 13 MM SQ. I.R. 0.76 M LONG WITH 38 MM DIA. ALUM. CAP STAMPED "ODOT HORIZ. CONTROL 67"	146229.517	1270638.156	221.249
68	SET 13 MM SQ. I.R. 0.76 M LONG WITH 38 MM DIA. ALUM. CAP STAMPED "ODOT HORIZ. CONTROL 68"	146174.995	1270880.257	216.658
69	SET 13 MM SQ. I.R. 0.76 M LONG WITH 38 MM DIA. ALUM. CAP STAMPED "ODOT HORIZ. CONTROL 69"	146181.376	1271103.987	214.948

- LEGEND
- ▲ SET MONUMENT
  - FOUND MONUMENT
  - ★ FOUND GPS MONUMENT

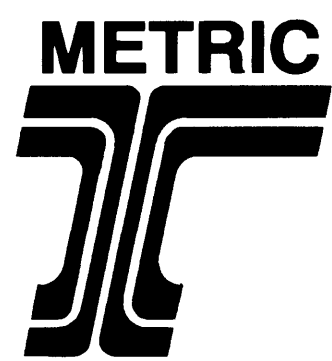


SCALE: 1:2000

COUNTY SURVEYORS FILE DATA  
 DO NOT REMOVE FROM OFFICE

NOTE: ALL COORDINATES ON THIS MAP ARE METRIC, ON A LOCAL DATUM PLANE, WHICH REPRESENTS TRUE GROUND DISTANCES. TO CONVERT COORDINATES TO ENGLISH, DIVIDE THE METRIC COORDINATES BY 0.3048

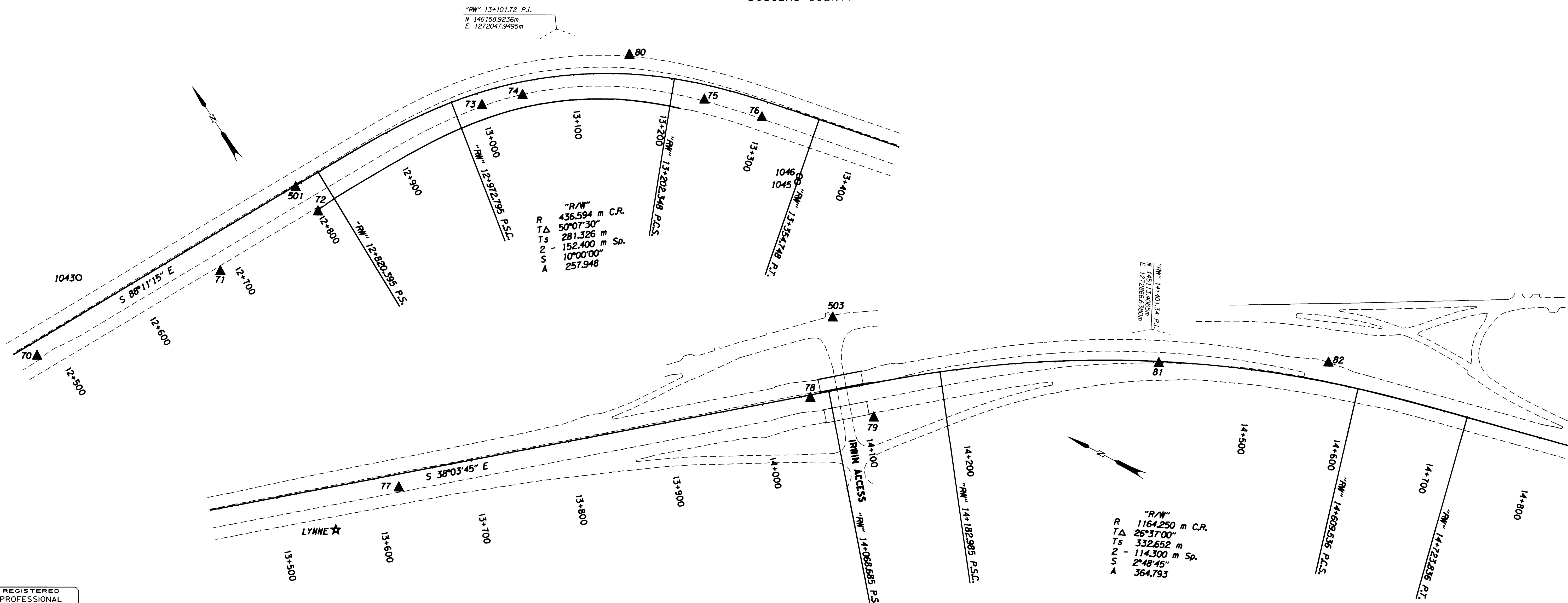
OREGON DEPARTMENT OF TRANSPORTATION  
**HORIZONTAL CONTROL, RECOVERY, AND RETRACEMENT MAP**  
 MYRTLE CREEK - CANYONVILLE SEC. (1-5)  
 DOUGLAS COUNTY  
 ODOT  
 3500 Stewart Parkway, Suite 140  
 Roseburg, Oregon 97470



# HORIZONTAL CONTROL, RECOVERY AND RETRACEMENT MAP

FOR THE OREGON DEPARTMENT OF TRANSPORTATION  
LOCATED IN THE NW 1/4, SW 1/4, & SE 1/4 OF SECTION 21, THE NE 1/4 OF SECTION 28,  
AND THE NW 1/4 OF SECTION 27, T. 30 S., R. 5 W., W.M.  
DOUGLAS COUNTY

FILED  
Date: 4/29/99, By: JLP  
This survey consists of: 11 Pgs.  
Map: M129-39J  
Narrative:  
Corner Rpt.: (CS 65/19)  
(previously filed control reports)  
DOUGLAS COUNTY  
SURVEYOR JR



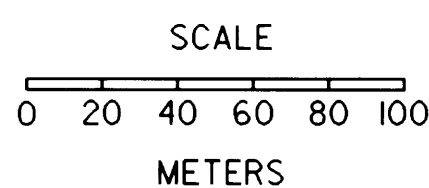
REGISTERED  
PROFESSIONAL  
LAND SURVEYOR  
  
Christine V. Blevins  
  
OREGON  
JULY 19, 1994  
CHRISTINE V. BLEVINS  
2669

RENEWAL DATE 12-31-99

CHRISTINE V. BLEVINS P.L.S.  
Oregon Department of Transportation  
3500 N.W. Stewart Parkway  
Roseburg, Oregon 97470

**LEGEND**

- ▲ SET MONUMENT
- FOUND MONUMENT
- ★ FOUND GPS MONUMENT



SCALE: 1:2000

**CONTROL NETWORK AND FOUND MONUMENTS**

POINT	DESCRIPTION	NORTHING	EASTING	ELEV.
1043	FOUND 5/8" (16 MM) I.R. SET IN CONCRETE 35 MM ABOVE SURFACE R/W STA. 412+00.00 P.O.T. 34.14 M (112 FT.) LT.. (GOOD CONDITION)	146209.35	1271505.069	
1045	FOUND 5/8" (16 MM) I.R. SET IN CONCRETE 30 MM ABOVE SURFACE R/W STA. 438+16.03 P.T. 67.06 M (220 FT.) RT.. (GOOD CONDITION)	145896.143	1272168.552	
1046	FOUND 5/8" (16 MM) I.R. FLUSH WITH SURFACE, R/W STA. 438+16.03 P.T. 60.96 M (200 FT.) RT.. (GOOD CONDITION)	145899.923	1272173.333	
LYNNE	SET 75 MM DIA. BRASS DISK IN CONC. MONUMENT STAMPED "OREGON D.O.T. GEODETIC CONTROL PT. DO NOT DISTURB LYNNE" (DCSO CS65/19-1)	145755.038	1272308.587	
501	SET 13 MM SQ. I.R. 0.76 M LONG WITH 38 MM DIA. ALUM. CAP STAMPED "ODOT HORIZ. CONTROL 501"	146168.141	1271739.868	218.336
503	SET R.R. SPIKE IN ASPHALT CONCRETE AT THE N. CANYONVILLE INTERCHANGE ON EAST SIDE OF I-5 FREEWAY. (EXIT 99)	145406.715	1272731.091	216.116
70	SET 13 MM SQ. I.R. 0.76 M LONG WITH 38 MM DIA. ALUM. CAP STAMPED "ODOT HORIZ. CONTROL 70"	146166.143	1271427.224	219.845
71	SET 13 MM SQ. I.R. 0.76 M LONG WITH 38 MM DIA. ALUM. CAP STAMPED "ODOT HORIZ. CONTROL 71"	146137.758	1271629.559	223.230
72	SET 13 MM SQ. I.R. 0.76 M LONG WITH 38 MM DIA. ALUM. CAP STAMPED "ODOT HORIZ. CONTROL 72"	146135.097	1271745.342	225.743
73	SET 13 MM SQ. I.R. 0.76 M LONG WITH 38 MM DIA. ALUM. CAP STAMPED "ODOT HORIZ. CONTROL 73"	146135.906	1271943.125	226.305

**CONTROL NETWORK AND FOUND MONUMENTS**

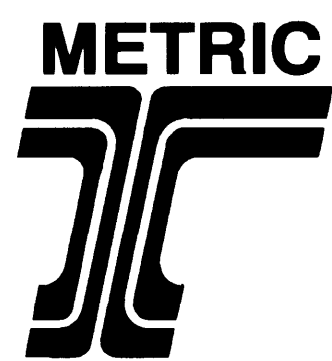
POINT	DESCRIPTION	NORTHING	EASTING	ELEV.
74	SET 13 MM SQ. I.R. 0.76 M LONG WITH 38 MM DIA. ALUM. CAP STAMPED "ODOT HORIZ. CONTROL 74"	146122.046	1271983.263	226.561
75	SET 13 MM SQ. I.R. 0.76 M LONG WITH 38 MM DIA. ALUM. CAP STAMPED "ODOT HORIZ. CONTROL 75"	146018.263	1272135.300	222.897
76	SET 13 MM SQ. I.R. 0.76 M LONG WITH 38 MM DIA. ALUM. CAP STAMPED "ODOT HORIZ. CONTROL 76"	145971.569	1272174.465	221.528
77	SET 13 MM SQ. I.R. 0.76 M LONG WITH 38 MM DIA. ALUM. CAP STAMPED "ODOT HORIZ. CONTROL 77"	145718.628	1272377.160	217.396
78	SET 13 MM SQ. I.R. 0.76 M LONG WITH 38 MM DIA. ALUM. CAP STAMPED "ODOT HORIZ. CONTROL 78"	145389.487	1272647.994	221.257
79	SET 13 MM SQ. I.R. 0.76 M LONG WITH 38 MM DIA. ALUM. CAP STAMPED "ODOT HORIZ. CONTROL 79"	145323.297	1272659.449	222.067
80	SET 13 MM SQ. I.R. 0.76 M LONG WITH 38 MM DIA. ALUM. CAP STAMPED "ODOT HORIZ. CONTROL 80"	146097.640	1272096.154	219.167
81	SET 13 MM SQ. I.R. 0.76 M LONG WITH 38 MM DIA. ALUM. CAP STAMPED "ODOT HORIZ. CONTROL 81"	145091.195	1272840.124	227.578
82	SET 13 MM SQ. I.R. 0.76 M LONG WITH 38 MM DIA. ALUM. CAP STAMPED "ODOT HORIZ. CONTROL 82"	144938.186	1272918.880	230.580

**COUNTY SURVEYORS FILE DATA  
DO NOT REMOVE FROM OFFICE**

NOTE: ALL COORDINATES ON THIS MAP ARE METRIC, ON A LOCAL DATUM PLANE, WHICH REPRESENTS TRUE GROUND DISTANCES. TO CONVERT COORDINATES TO ENGLISH, DIVIDE THE METRIC COORDINATES BY 0.3048

OREGON DEPARTMENT OF TRANSPORTATION  
**HORIZONTAL CONTROL, RECOVERY,  
AND RETRACEMENT MAP**  
MYRTLE CREEK - CANYONVILLE SEC. (1-5)  
DOUGLAS COUNTY

ODOT  
3500 Stewart Parkway, Suite 140  
Roseburg, Oregon 97470

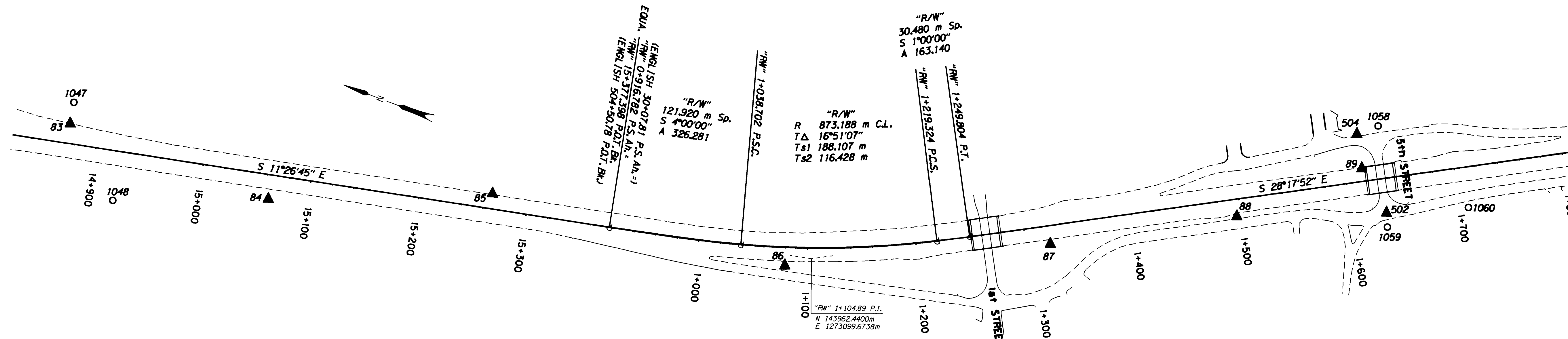


# HORIZONTAL CONTROL, RECOVERY AND RETRACEMENT MAP

FOR THE OREGON DEPARTMENT OF TRANSPORTATION

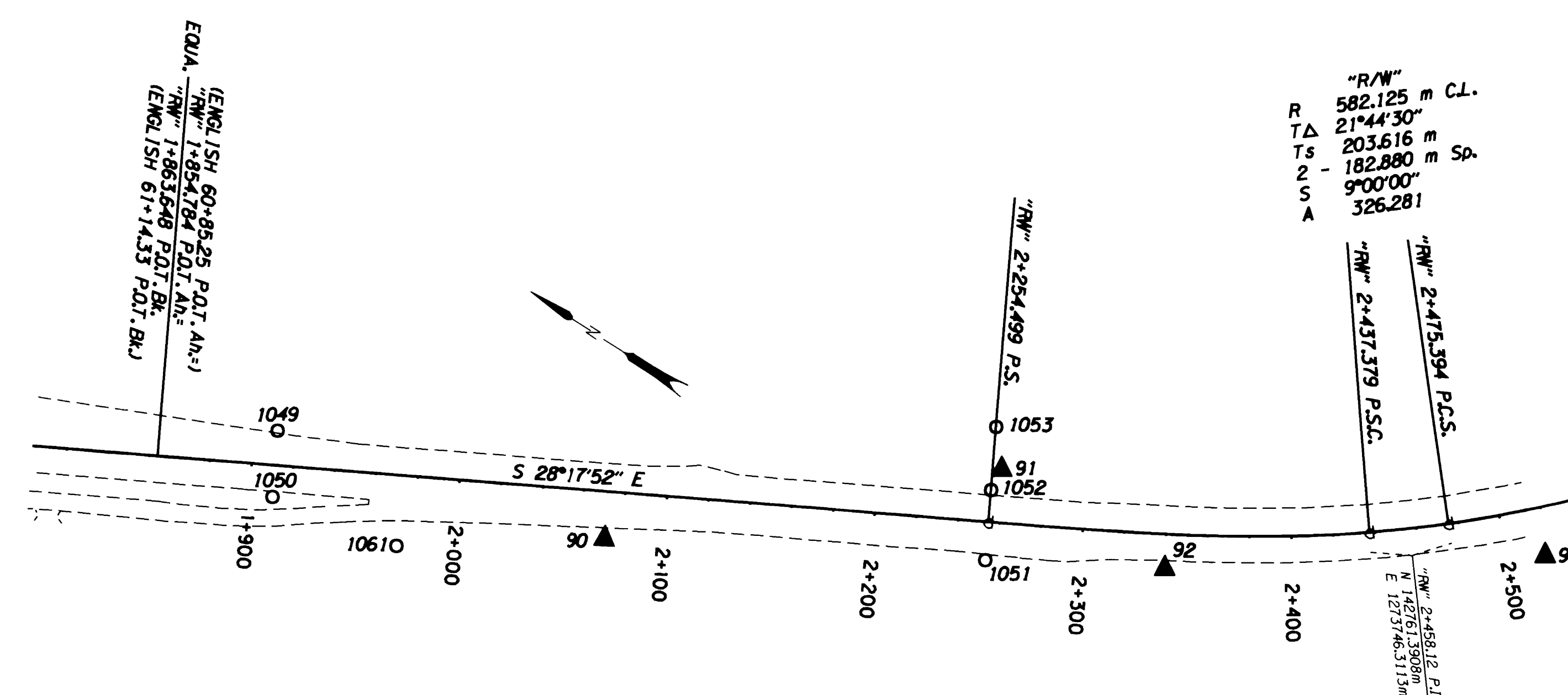
LOCATED IN THE NW 1/4 & SW 1/4 OF SECTION 27 AND THE NW 1/4, NE 1/4, & SE 1/4 OF SECTION 34, T. 30 S., R. 5 W., W.M.

FILED  
 Date: 4-23-1999 By: JP  
 This survey consists of: 11 Pgs.  
 Map: M129-39K  
 Narrative: (CS 65/11)  
 (previously filed control reports)  
 DOUGLAS COUNTY SURVEYOR



CONTROL NETWORK AND FOUND MONUMENTS

POINT	DESCRIPTION	NORTHING	EASTING	ELEV.
1047	FOUND 5/8" (16 MM) I.R. 100 MM BELOW SURFACE, R/W STA. 488+00.00 P.O.T. 38.10 M (125.00 FT.) LT. (GOOD CONDITION)	144648.244	1272999.677	
1048	FOUND 3/8" (16 MM) REBAR 100 MM ABOVE SURFACE. (GOOD CONDITION)	144583.301	1272927.340	
1049	FOUND 5/8" (16 MM) I.R. WITH A 1 1/2" (38 MM) DIA. ALUM. CAP STAMPED "OREG. STATE HWY. DIV." SET IN CONCRETE FLUSH WITH SURFACE, A WITNESS POST AND PADDLE BOARD NEARBY MARKED "SHRW P.O.T. LC 62+69.66" 16.76 M (55 FT.) LT. (GOOD CONDITION)	143250.980	1273501.759	234.397
1050	FOUND 5/8" (16 MM) I.R. SET IN CONCRETE. THE ROD IS BENT TO THE SOUTH, FLUSH WITH SURFACE AND THE CAP IS MISSING. A WITNESS POST AND PADDLE BOARD NEARBY MARKED "SHRW P.O.T. LC 62+69.66" 15.24 M (50 FT.) RT. (POOR CONDITION)	143235.807	1273473.580	234.265
1051	FOUND 5/8" (16 MM) I.R. WITH A 1 1/2" (38 MM) DIA. ALUM. CAP STAMPED "OREG. STATE HWY. DIV." SET IN CONCRETE, 30 MM BELOW SURFACE AT STA. 73+96.65 P.S. 18.29 M (60 FT.) RT. (GOOD CONDITION)	142932.021	1273633.673	
1052	FOUND 5/8" (16 MM) I.R. WITH A 1 1/2" (38 MM) DIA. ALUM. CAP STAMPED "OREG. STATE HWY. DIV." SET IN CONCRETE, 30 MM BELOW SURFACE AT STA. 73+96.65 P.S. 15.24 M (50 FT.) LT. (GOOD CONDITION)	142947.885	1273663.215	
1053	FOUND 5/8" (16 MM) I.R. 30 MM ABOVE SURFACE. A WITNESS POST AND PADDLE BOARD NEARBY MARKED "SHRW P.S. L 73+96.65 150.00 LT." (45.72 M LT.) (GOOD CONDITION)	142962.315	1273690.051	
1058	FOUND 5/8" (16 MM) I. REBAR 60 MM ABOVE SURFACE. (GOOD CONDITION)	143516.035	1273395.236	
1059	FOUND 1" (25 MM) I. PIPE 110 MM ABOVE SURFACE. (GOOD CONDITION)	143475.685	1273310.766	
1060	FOUND 5/8" (16 MM) REBAR WITH A 1 1/4" (32 MM) PLASTIC CAP STAMPED "R. BROWN PLS 2391" FLUSH WITH SURFACE (GOOD CONDITION)	143412.139	1273353.519	
1061	FOUND 1" (25 MM) I. PIPE 300 MM ABOVE SURFACE. (GOOD CONDITION)	143173.131	1273486.023	
502	SET R.R. SPIKE (PUNCHED) IN ASPHALT CONCRETE AT THE S. CANYONVILLE INTERSECTION ON WEST SIDE OF I-5 FREEWAY.	143481.341	1273324.127	233.004
504	SET 13 MM SQ. I.R. 0.76 M LONG WITH A 38 MM DIA. ALUM. CAP STAMPED "O.D.O.T. HORIZ. CONTROL 504"	143532.157	1273382.686	232.217
83	SET 13 MM SQ. I.R. 0.76 M LONG WITH 38 MM DIA. ALUM. CAP STAMPED "ODOT HORIZ. CONTROL 83"	144645.050	1272981.486	235.291
84	SET 13 MM SQ. I.R. 0.76 M LONG WITH 38 MM DIA. ALUM. CAP STAMPED "ODOT HORIZ. CONTROL 84"	144450.155	1272979.382	240.343



CONTROL NETWORK AND FOUND MONUMENTS

POINT	DESCRIPTION	NORTHING	EASTING	ELEV.
85	SET 13 MM SQ. I.R. 0.76 M LONG WITH 38 MM DIA. ALUM. CAP STAMPED "ODOT HORIZ. CONTROL 85"	144258.770	1273055.612	239.582
86	SET 13 MM SQ. I.R. 0.76 M LONG WITH 38 MM DIA. ALUM. CAP STAMPED "ODOT HORIZ. CONTROL 86"	143983.786	1273086.645	240.551
87	SET 13 MM SQ. I.R. 0.76 M LONG WITH 38 MM DIA. ALUM. CAP STAMPED "ODOT HORIZ. CONTROL 87"	143762.047	1273189.845	238.814
88	SET 13 MM SQ. I.R. 0.76 M LONG WITH 38 MM DIA. ALUM. CAP STAMPED "ODOT HORIZ. CONTROL 88"	143609.329	1273273.252	238.619
89	SET 13 MM SQ. I.R. 0.76 M LONG WITH 38 MM DIA. ALUM. CAP STAMPED "ODOT HORIZ. CONTROL 89"	143517.021	1273354.642	237.983
90	SET 13 MM SQ. I.R. 0.76 M LONG WITH 38 MM DIA. ALUM. CAP STAMPED "ODOT HORIZ. CONTROL 90"	143091.643	1273544.302	235.884
91	SET 13 MM SQ. I.R. 0.76 M LONG WITH 38 MM DIA. ALUM. CAP STAMPED "ODOT HORIZ. CONTROL 91"	142949.857	1273675.553	243.223
92	SET 13 MM SQ. I.R. 0.76 M LONG WITH 38 MM DIA. ALUM. CAP STAMPED "ODOT HORIZ. CONTROL 92"	142858.279	1273678.225	243.315
93	SET 13 MM SQ. I.R. 0.76 M LONG WITH 38 MM DIA. ALUM. CAP STAMPED "ODOT HORIZ. CONTROL 93"	142708.674	1273782.189	247.574

COUNTY SURVEYORS FILE DATA  
 DO NOT REMOVE FROM OFFICE

NOTE: ALL COORDINATES ON THIS MAP ARE METRIC, ON A LOCAL DATUM PLANE, WHICH REPRESENTS TRUE GROUND DISTANCES. TO CONVERT COORDINATES TO ENGLISH, DIVIDE THE METRIC COORDINATES BY 0.3048

OREGON DEPARTMENT OF TRANSPORTATION  
**HORIZONTAL CONTROL, RECOVERY, AND RETRACEMENT MAP**  
 MYRTLE CREEK - CANYONVILLE SEC. (1-5)  
 DOUGLAS COUNTY  
 ODOT  
 3500 Stewart Parkway, Suite 140  
 Roseburg, Oregon 97470

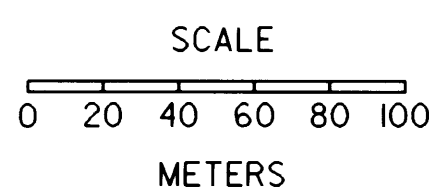
REGISTERED PROFESSIONAL LAND SURVEYOR  
 Christine V. Blewins  
 OREGON JULY 19, 1994  
 CHRISTINE V. BLEVINS 2669

RENEWAL DATE 12-31-99

CHRISTINE V. BLEVINS P.L.S.  
 Oregon Department of Transportation  
 3500 N.W. Stewart Parkway  
 Roseburg, Oregon 97470

LEGEND

- ▲ SET MONUMENT
- FOUND MONUMENT
- ★ FOUND GPS MONUMENT



SCALE: 1:2000