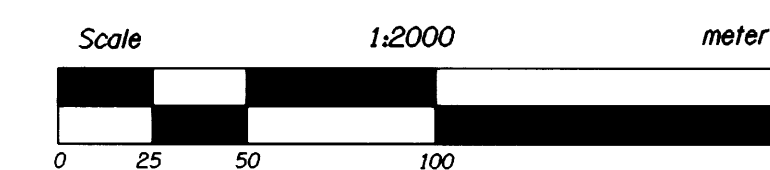




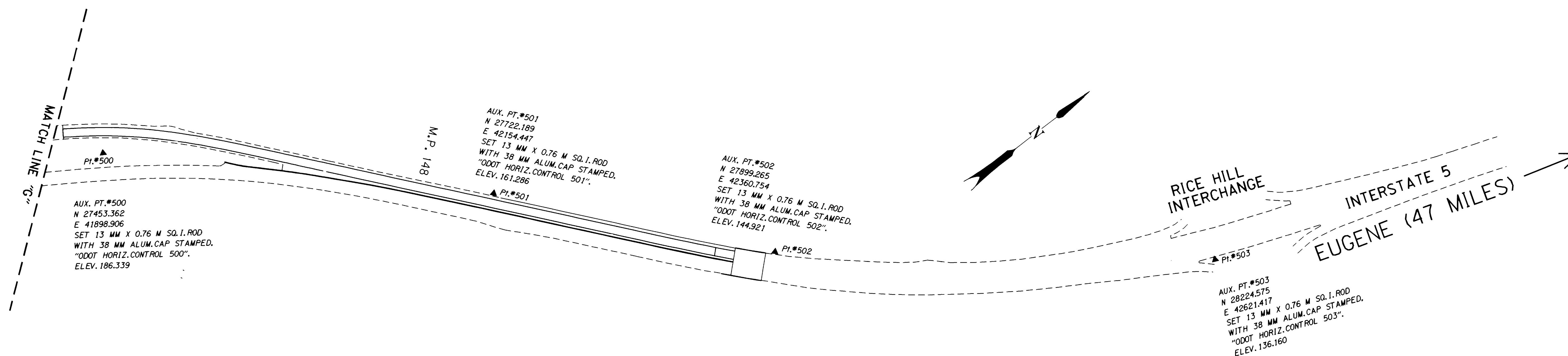
HORIZONTAL CONTROL AND RECOVERY MAP

LOCATED IN THE SE 1/4 OF SECTION 28 AND THE
NW 1/4 & NE 1/4 OF SECTION 33, T. 23 S., R. 5 W., W.M.
DOUGLAS COUNTY

FILED
Date: 1-27-1999 By: J.P.
This survey consists of:
Map: M129-32 E
Narrative:
Corner Rpt:
J.C. DOUGLAS COUNTY
SURVEYOR, C.S.



LEGEND	
▲	SET MONUMENT
○	FOUND MONUMENT



COUNTY SURVEYORS FILE DATA
DO NOT REMOVE FROM OFFICE

REGISTERED
PROFESSIONAL
LAND SURVEYOR
Christine V. Blevins
OREGON
JULY 19, 1994
CHRISTINE V. BLEVINS
2669
EXPIRES : DEC. 31, 1999

OREGON DEPARTMENT OF TRANSPORTATION
**HORIZONTAL CONTROL
AND RECOVERY MAP**
N. OAKLAND INTCH. - RICE HILL SECTION
INTERSTATE 5
DOUGLAS COUNTY
ODOT
3500 Stewart Parkway, Suite 140
Roseburg, Oregon 97470

PROJECT KEY #08711

SHEET 5 OF 5