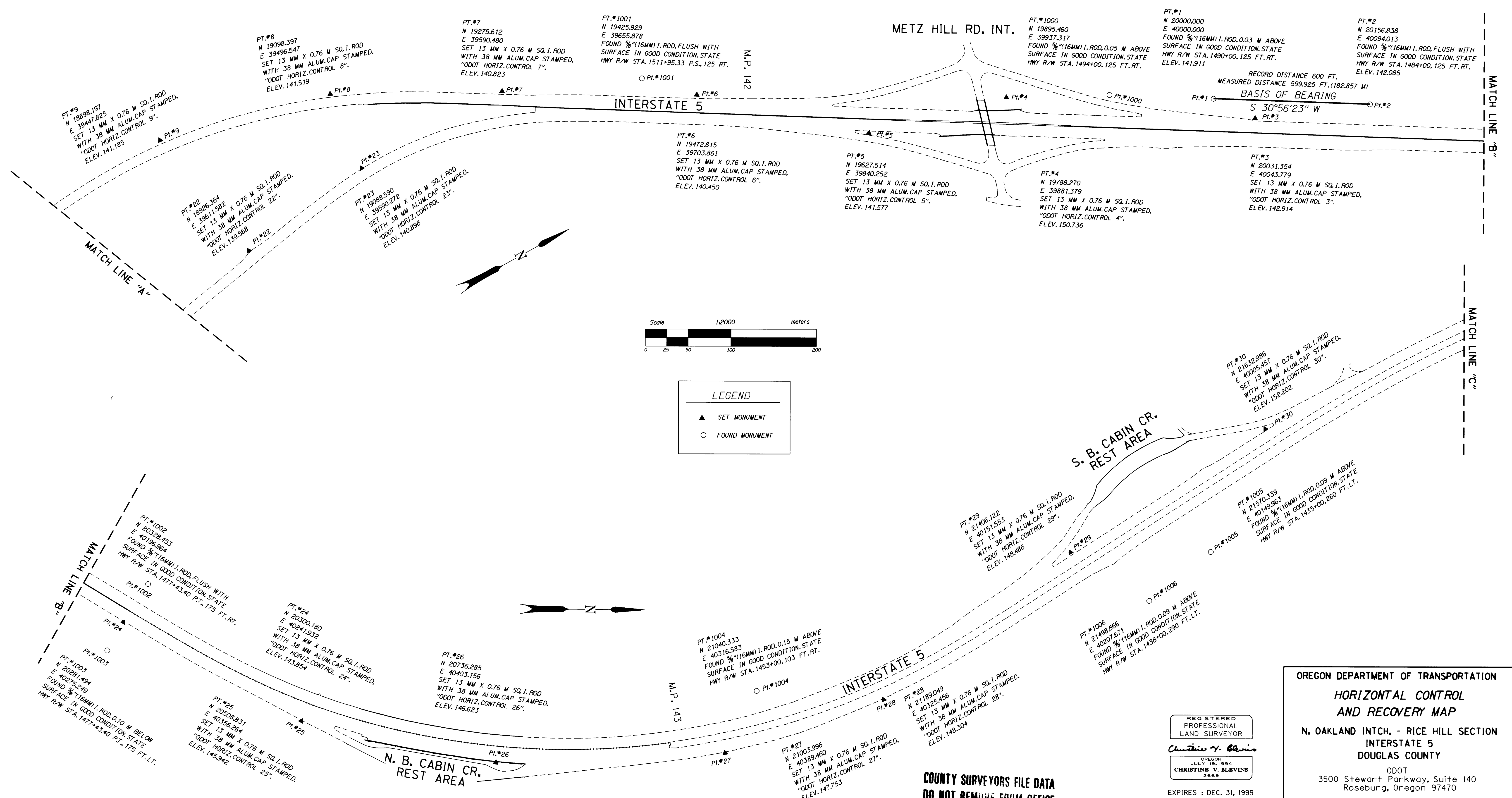


HORIZONTAL CONTROL AND RECOVERY MAP

LOCATED IN THE NW 1/4 & SW 1/4 OF SECTION 29 AND THE SE 1/4, SW 1/4, NE 1/4, & NW 1/4 OF SECTION 20, T. 24 S., R. 5 W., W.M. DOUGLAS COUNTY

FILED
Date: 1-27-1999 By: J.P.
This survey consists of: 5 SHEETS
Map: M129-32 B
Narrative:
Corner Rpt:
DOUGLAS COUNTY SURVEYOR



LEGEND

- ▲ SET MONUMENT
- FOUND MONUMENT

OREGON DEPARTMENT OF TRANSPORTATION
HORIZONTAL CONTROL AND RECOVERY MAP
N. OAKLAND INTCH. - RICE HILL SECTION
INTERSTATE 5
DOUGLAS COUNTY

ODOT
3500 Stewart Parkway, Suite 140
Roseburg, Oregon 97470

PROJECT KEY #08711 SHEET 2 OF 5

REGISTERED PROFESSIONAL LAND SURVEYOR
Christine V. Blevins
OREGON JULY 19, 1994
CHRISTINE V. BLEVINS 2669
EXPIRES: DEC. 31, 1999

COUNTY SURVEYORS FILE DATA
DO NOT REMOVE FROM OFFICE