

SE 1/4 SECTION 15 T27S R5W WM
 SW 1/4 SECTION 15 T27S R5W WM
 SE 1/4 SECTION 16 T27S R5W WM

FILED
 Date: 5-13-2025 By: [Signature]
 This survey consist of:
 Map: ST. HWY 138-020 A-D
 Narrative:
 Corner Rpt:
 DOUGLAS COUNTY SURVEYOR

SURVEY NARRATIVE

THIS SURVEY WAS MADE AS A RESULT OF THE OREGON DEPARTMENT OF TRANSPORTATION'S SOUTHWEST OREGON 2024-2027 ADA CURB RAMP, PHASE 2 PROJECT. THE PURPOSE OF THIS SURVEY IS TO RECORD THE POSITIONS OF MONUMENTS OF RECORD, RESOLVE THE EXISTING RIGHT OF WAY (R/W) CENTERLINES, AND DEFINE THE EXISTING RIGHT OF WAY LINES AS DIRECTED IN OREGON REVISED STATUTE (ORS)209.155.

THE OR:138E NORTH UMPQUA HIGHWAY CENTERLINE SHOWN HEREON WAS RESOLVED UTILIZING COUNTY ROAD MONUMENTATION PER DOUGLAS COUNTY ROAD DEPT. NORTH UMPQUA HWY #4 COUNTY ROAD PLANS DATED APRIL 1969, AND FOUND ON ODOT DRG. 10B-6-28. THESE MAPS HAD A DIFFERENCE IN STATIONING BY .01' BUT THE ALIGNMENTS WERE TREATED AS EQUAL. MONUMENTATION AND ESTABLISHMENT OF THIS PORTION OF NORTH UMPQUA HWY IS BASED ON THE RESOLUTION IN ROAD DOCKET NO. 1000, WHICH CAN BE FOUND ON FILE AT THE DOUGLAS COUNTY SURVEYOR'S OFFICE UNDER ROAD FILES. THE INTENT OF THIS MAP WAS TO RESOLVE THE NORTH UMPQUA HWY RIGHT OF WAY NEAR THE COUNTY ROAD NAMED SUNSHINE ROAD. MONUMENTS WERE NOT SEARCHED FOR AT EVERY ANGLE POINT AND ADDITIONAL STATION EQUATIONS MAY NEED TO BE APPLIED TO BETTER FIT RIGHT OF WAY ANGLE POINTS IF A FULL RETRACEMENT WAS COMPLETED.

THE WESTERLY TANGENT SHOWN HEREON WAS ESTABLISHED BY HOLDING THE RECORD OFFSET OF POINTS 1075 AND 1077. THE EASTERLY TANGENT SHOWN HEREON WAS ESTABLISHED BY HOLDING THE RECORD OFFSET OF POINT 1214 AND THE SPLIT OF POINTS 1084 AND 1083. THE CURVE BETWEEN THESE TWO TANGENTS WAS PLACED BY HOLDING THE PRODUCED CENTRAL ANGLE AND THE RECORD DEGREE OF CURVE PER ODOT DRG. 10B-6-28. RECORD STATIONING WAS HELD AT POINT 1088 AND A RECORD STATION EQUATION WAS APPLIED AT EVENT POINT "10B" 188+04.72 P.T. BK. = "10B" 188+04.60 P.O.T. AH. TO KEEP HARMONY WITH RECORD STATIONING.

CONTROL INFORMATION

SURVEY DATUM- PER OAR 734-005-015 OREGON COORDINATE REFERENCE SYSTEM (OCRS):
 COTTAGE GROVE-CANYONVILLE ZONE
 NAD83(2011) EPOCH 2010 (INTERNATIONAL FEET)

EQUIPMENT- THE FIELD WORK FOR THIS PROJECT WAS PERFORMED FROM FEBRUARY 2024 THROUGH JANUARY OF 2025. 2 LEICA GS14 AND 2 GS18 GNSS RECEIVERS, 1 LEICA CS20 DATA COLLECTOR, AND 1 LEICA TS16 TOTAL STATION WERE UTILIZED TO PERFORM THE FIELD WORK.

HORIZONTAL CONTROL:

A STATIC GPS NETWORK UTILIZING REDUNDANT 7 HOUR OCCUPATIONS WAS PERFORMED TO DERIVE COORDINATES ON POINTS 2306901 AND 2306902. THESE BASELINES WERE PROCESSED AGAINST OREGON REAL TIME GEODETIC STATION 'RSBG'. A 3D LEAST SQUARES ADJUSTMENT WAS PERFORMED. ADDITIONALLY, TWO REDUNDANT 60 EPOCH GNSS OBSERVATIONS UNDER DIFFERENT SATELLITE CONSTELLATIONS, ALONG WITH A SINGLE 30 MINUTE STATIC OCCUPATION WERE PERFORMED ON POINTS 2306927-2306929 WHILE OCCUPYING SAID POINTS 2306901 AND 2306902 AND RECEIVING DATA FROM 'RSBG'. THIS SUBSEQUENT NETWORK WAS PROCESSED AND ADJUSTED UTILIZING A 3D LEAST SQUARES ADJUSTMENT, HOLDING FIXED THE ORGN VALUE FOR STATION 'RSBG' AND THE PREVIOUSLY ADJUSTED VALUES FOR POINTS 2306901 AND 2306902.

RECOVERED MONUMENTATION:

ALL FOUND MONUMENTATION WAS MEASURED UTILIZING 2 REDUNDANT 60 EPOCH GNSS OBSERVATIONS WHILE CONNECTED TO THE ORGN IN ACCORDANCE WITH ODOT'S SURVEY POLICY AND PROCEDURES MANUAL. IN THE EVENT THAT THE SKY WAS OBSTRUCTED AND A GNSS MEASUREMENT COULD NOT BE PERFORMED, ADDITIONAL CONTROL WAS SET UTILIZING THE ORGN. A TOTAL STATION WAS THEN UTILIZED TO TIE THE MONUMENT IN ACCORDANCE WITH ODOT'S POLICY AND PROCEDURE'S MANUAL.

CONTROL STATEMENT:

CONTROL POINTS FOR THIS SURVEY WERE NOT SET ON AND DO NOT REPRESENT PROPERTY OR RIGHT OF WAY LINES AND ARE INTENDED FOR THE USE BY ODOT IN SUPPORT OF THIS AND FUTURE PROJECTS. IT IS NOT THE INTENT OF ODOT TO PERPETUATE THESE CONTROL POINTS AS MONUMENTS.

CONTROL POINT COORDINATE TABLE

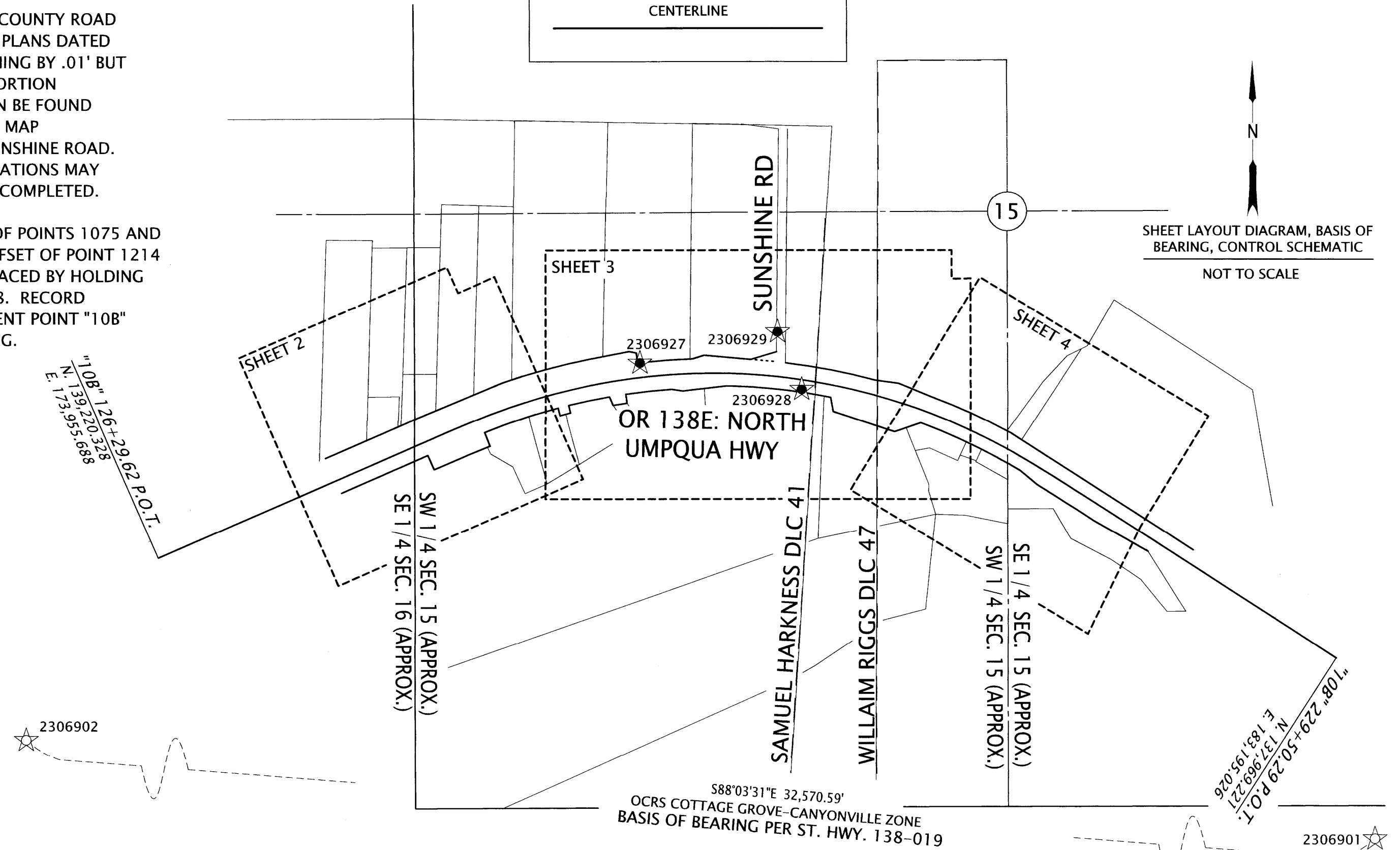
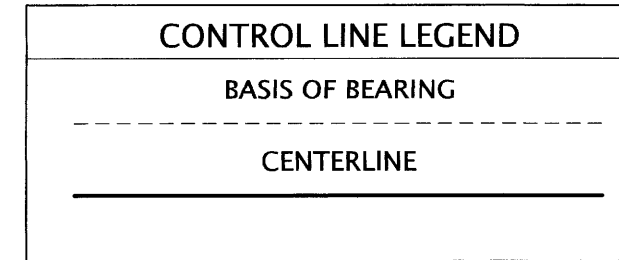
PT. NO.	OCRS NORTHING	OCRS EASTING	DATE	DESCRIPTION
2306901	136947.12	185471.43	2/6/2024	FOUND 1" COPPER PLUG IN CURB "ODOT 2306901"
2306902	138050.53	152919.53	2/6/2024	FOUND 1" COPPER PLUG IN CURB "ODOT 2306902"
2306927	140805.28	177734.46	2/12/2024	FOUND 1/2" REBAR
2306928	140688.04	178452.70	2/12/2024	SET 90D NAIL w/ 1 1/2" ALUM WASHER "ODOT 2306928"
2306929	140943.63	178346.03	2/12/2024	SET 1" COPPER PLUG IN CURB "ODOT 2306929"
RSBG	146408.83	157103.34	-	ORGN RSBG (ROSEBURG)

ORGN= OREGON REALTIME GEODETIC NETWORK

SHEET INDEX:

- 1 SURVEY NARRATIVE, SHEET LAYOUT, CONTROL NARRATIVE, SURVEY REFERENCES
- 2-4 SURVEY SHEETS

ASSESSORS MAPS: 270515C, 270515D, 270516D



SHEET LAYOUT DIAGRAM, BASIS OF BEARING, CONTROL SCHEMATIC
 NOT TO SCALE

REFERENCE LEGEND	
(R1)	RECORD INFORMATION PER ODOT DRG. 10B-6-28 AND ROAD DOCKET 1000
(R2)	RECORD INFORMATION PER ROAD RECORD V8 P217
(R3)	RECORD INFORMATION PER COUNTY SURVEY M166-16
○	FOUND MONUMENT NOTED IN TABLE
☆	FOUND GPS CONTROL POINT
★	SET GPS CONTROL POINT

REGISTERED PROFESSIONAL LAND SURVEYOR

[Signature]
 OREGON
 MARCH 14, 2017
 ZACHARY P. EARLE
 91474

EXPIRES: 12/31/2025

OREGON DEPARTMENT OF TRANSPORTATION

HORIZONTAL CONTROL, RECOVERY AND RETRACEMENT MAP
 SOUTHWEST OREGON 2024-2027 ADA CURB RAMP DESIGN,
 PHASE 2 (ROSEBURG)
 (OR138E) NORTH UMPQUA HIGHWAY
 DOUGLAS COUNTY



ODOT REGION 3 TECH CENTER
 100 ANTELOPE RD.
 WHITE CITY, OR 97503 KEY NO. 23069

MARCH 31, 2025
 NO SCALE
 SHEET 1 OF 4

ST. HWY. 138-020 A