

NW 1/4 SECTION 19 T27S R5W WM NE 1/4 SECTION 19 T27S R5W WM  
 NW 1/4 SECTION 20 T27S R5W WM NE 1/4 SECTION 20 T27S R5W WM

FILED  
 Date: 12-11-2024 By: [Signature]  
 This survey consist of:  
 Map: ST. HWY 138-019 A-1  
 Narrative: \_\_\_\_\_  
 Corner Rpt: \_\_\_\_\_  
 DOUGLAS COUNTY SURVEYOR

**CONTROL INFORMATION**

SURVEY DATUM- PER OAR 734-005-015 OREGON COORDINATE REFERENCE SYSTEM (OCRS):  
 COTTAGE GROVE-CANYONVILLE ZONE  
 NAD83(2011) EPOCH 2010 (INTERNATIONAL FEET)

EQUIPMENT- THE FIELD WORK FOR THIS PROJECT WAS PERFORMED FROM FEBRUARY THROUGH OCTOBER OF 2024. 2 LEICA GS14 AND 2 GS18 GNSS RECEIVER, 1 LEICA CS20 DATA COLLECTOR, AND 1 LEICA TS16 TOTAL STATION WERE UTILIZED TO PERFORM THE FIELD WORK.

**HORIZONTAL CONTROL:**

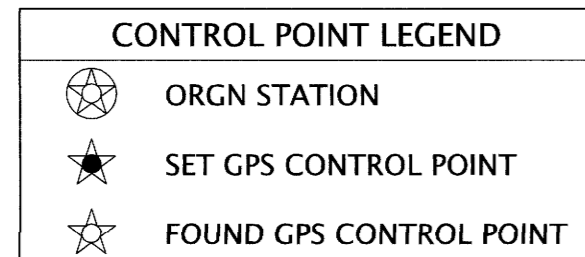
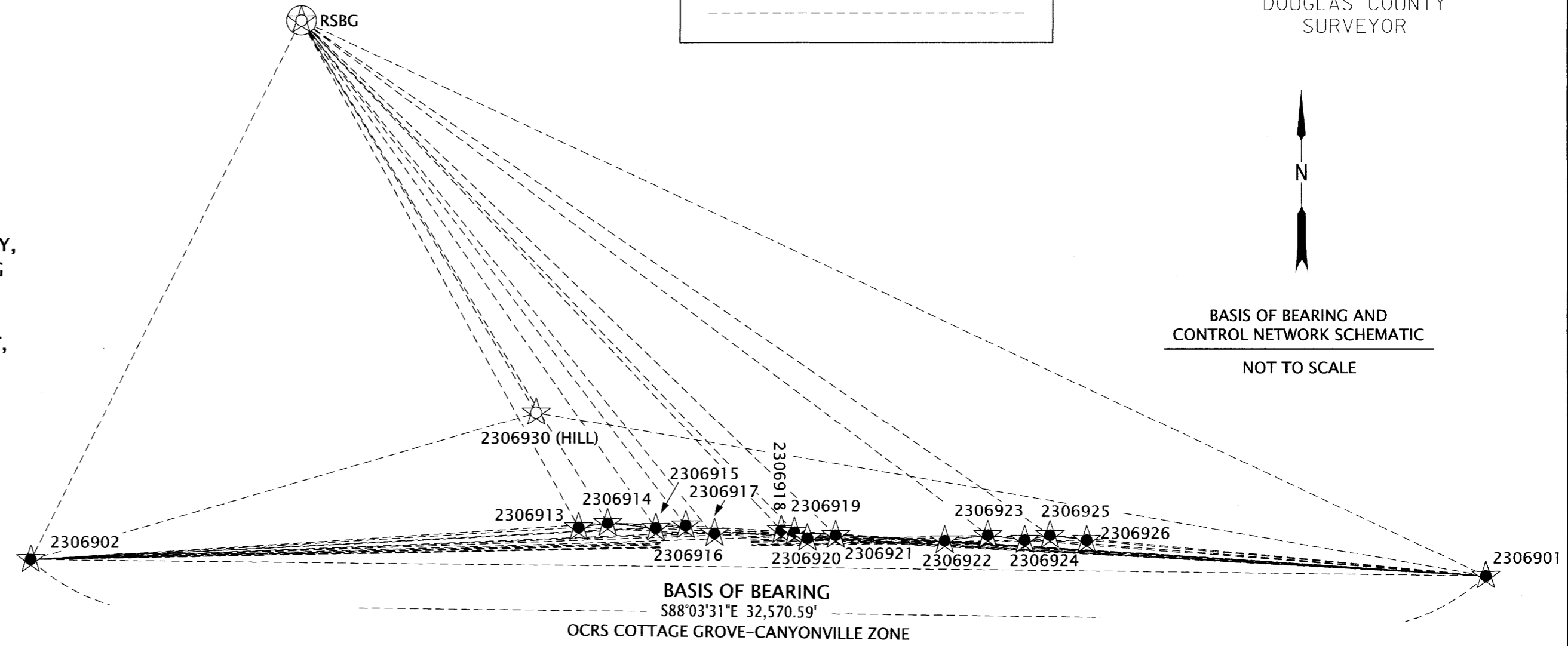
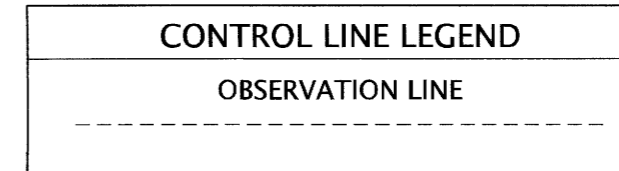
A STATIC GPS NETWORK UTILIZING REDUNDANT 7 HOUR OCCUPATIONS WAS PERFORMED TO DERIVE COORDINATES ON POINTS 2306901 AND 2306902. THESE BASELINES WERE PROCESSED AGAINST OREGON REAL TIME GEODETIC STATION 'RSBG'. A 3D LEAST SQUARES ADJUSTMENT WAS PERFORMED. ADDITIONALLY, TWO REDUNDANT 60 EPOCH GNSS OBSERVATIONS UNDER DIFFERENT SATELLITE CONSTELLATIONS, ALONG WITH A SINGLE 30 MINUTE STATIC OCCUPATION WERE PERFORMED ON POINTS 2306913-2306926 AND 2306930 WHILE OCCUPYING SAID POINTS 2306901 AND 2306902 AND RECEIVING DATA FROM 'RSBG'. THIS SUBSEQUENT NETWORK WAS PROCESSED AND ADJUSTED UTILIZING A 3D LEAST SQUARES ADJUSTMENT, HOLDING FIXED THE ORGN VALUE FOR STATION 'RSBG' AND THE PREVIOUSLY ADJUSTED VALUES FOR POINTS 2306901 AND 2306902

**RECOVERED MONUMENTATION:**

ALL FOUND MONUMENTATION WAS MEASURED UTILIZING 2 REDUNDANT 60 EPOCH GNSS OBSERVATIONS WHILE CONNECTED TO THE ORGN IN ACCORDANCE WITH ODOT'S SURVEY POLICY AND PROCEDURES MANUAL. IN THE EVENT THAT THE SKY WAS OBSTRUCTED AND A GNSS MEASUREMENT COULD NOT BE PERFORMED, ADDITIONAL CONTROL WAS SET UTILIZING THE ORGN. A TOTAL STATION WAS THEN UTILIZED TO TIE THE MONUMENT IN ACCORDANCE WITH ODOT'S POLICY AND PROCEDURE'S MANUAL.

**CONTROL STATEMENT:**

CONTROL POINTS FOR THIS SURVEY WERE NOT SET ON AND DO NOT REPRESENT PROPERTY OR RIGHT OF WAY LINES AND ARE INTENDED FOR THE USE BY ODOT IN SUPPORT OF THIS AND FUTURE PROJECTS. IT IS NOT THE INTENT OF ODOT TO PERPETUATE THESE CONTROL POINTS AS MONUMENTS.



**REFERENCE LEGEND**

- |  |   |
|--|---|
| (R1) RECORD INFORMATION PER COUNTY SURVEY ST. HWY. 138-015                 | (R15) RECORD INFORMATION PER TODD BUILDING COMPANY SUB. NO 2 (V5 P78) |
| (R2) RECORD INFORMATION PER ODOT DRG. 5B-5-21A                             | (R16) RECORD INFORMATION PER DEED DOC. 1968-8470                      |
| (R3) RECORD INFORMATION PER DEED 1966-13680                                | (R17) RECORD INFORMATION PER DEED DOC. 1967-4635                      |
| (R4) RECORD INFORMATION PER COUNTY SURVEY ST. HWY. 15-032                  | (R18) RECORD INFORMATION PER 2003-030828                              |
| (R5) RECORD INFORMATION PER ODOT DRG. 6B-21-13                             | (R19) RECORD INFORMATION PER KINNEYS IMPROVED PLAT V1 P41             |
| (R6) RECORD INFORMATION PER ODOT DRG. 1R-3-1731                            | (R20) RECORD INFORMATION PER COUNTY SURVEY M52-33                     |
| (R7) RECORD INFORMATION PER COUNTY ROAD PLAN (00670120)                    | (R21) RECORD INFORMATION PER COUNTY SURVEY M129-9                     |
| (R8) RECORD INFORMATION PER ODOT DRG. 5B-13-22                             | (R22) RECORD INFORMATION PER DEED DOC B.384 P.394                     |
| (R9) RECORD INFORMATION PER DEED DOC. 1968-8450                            | (R23) RECORD INFORMATION PER DEED 79-2290                             |
| (R10) RECORD INFORMATION PER ODOT DRG. 11B-7-5                             | (R24) RECORD INFORMATION PER DEED DOC V149 P57                        |
| (R11) RECORD INFORMATION PER DEED DOC. 1968-7197                           | (R25) RECORD INFORMATION PER M137-34                                  |
| (R12) RECORD INFORMATION PER ODOT DRG. 10B-22-27                           |   |
| (R13) RECORD INFORMATION PER DENN SUBDIVISION (V6 P50)                     |   |
| (R14) RECORD INFORMATION PER FIRST BROOKSIDE ADDITION TO ROSEBURG (V2 P13) |   |

**CONTROL POINT COORDINATE TABLE**

ORGN=OREGON REAL TIME GEODETIC NETWORK

PT. NO.	OCRS NORTHING	OCRS EASTING	DATE	DESCRIPTION
2306901	136947.12	185471.43	2/6/2024	SET 1" COPPER PLUG IN CURB "ODOT 2306901"
2306902	138050.53	152919.53	2/6/2024	SET 1" COPPER PLUG IN CURB "ODOT 2306902"
2306913	138543.93	161375.10	2/12/2024	SET 1" COPPER PLUG IN CURB "ODOT 2306913"
2306914	138607.24	161823.46	2/12/2024	SET 1" COPPER PLUG IN CURB "ODOT 2306914"
2306915	138530.65	162567.28	2/12/2024	SET 1" COPPER PLUG IN CURB "ODOT 2306915"
2306916	138568.99	163026.59	2/12/2024	SET 1" COPPER PLUG IN CURB "ODOT 2306916"
2306917	138470.37	163410.49	2/12/2024	SET 1" COPPER PLUG IN CURB "ODOT 2306917"
2306918	138493.97	164504.62	2/12/2024	SET 1" COPPER PLUG IN CURB "ODOT 2306918"
2306919	138464.21	164708.73	2/12/2024	SET 1" COPPER PLUG IN CURB "ODOT 2306919"
2306920	138368.98	164907.49	2/12/2024	SET 1" COPPER PLUG IN CURB "ODOT 2306920"
2306921	138416.89	165341.88	2/12/2024	SET 1" COPPER PLUG IN CURB "ODOT 2306921"
2306922	138332.59	167028.28	2/12/2024	SET 1" COPPER PLUG IN CURB "ODOT 2306922"
2306923	138417.26	167694.93	2/12/2024	SET 1" COPPER PLUG IN CURB "ODOT 2306923"
2306924	138340.76	168265.74	2/12/2024	SET 1" COPPER PLUG IN CURB "ODOT 2306924"
2306925	138415.41	168654.59	2/12/2024	SET 1" COPPER PLUG IN CURB "ODOT 2306925"
2306926	138341.18	169221.90	2/12/2024	SET 1" COPPER PLUG IN CURB "ODOT 2306926"
2306930	140325.22	160724.33	2/12/2024	FOUND 1" COPPER PLUG "ODOT CONTROL HILL"
RSBG	146408.83	157103.34	-	ORGN RSBG (ROSEBURG)

REGISTERED PROFESSIONAL LAND SURVEYOR  
 [Signature]  
 OREGON  
 MARCH 14, 2017  
 ZACHARY P. EARLE  
 91474  
 EXPIRES: 12/31/2025

**OREGON DEPARTMENT OF TRANSPORTATION**  
 HORIZONTAL CONTROL, RECOVERY AND RETRACEMENT.  
 SOUTHWEST OREGON 2024-2027 ADA CURB RAMP DESIGN, PHASE 2  
 DOUGLAS COUNTY

ODOT REGION 3 TECH CENTER  
 100 ANTELOPE RD.  
 WHITE CITY, OR 97503 KEY NO. 23069

NOVEMBER 7, 2024  
 NO SCALE  
 SHEET 2 OF 10