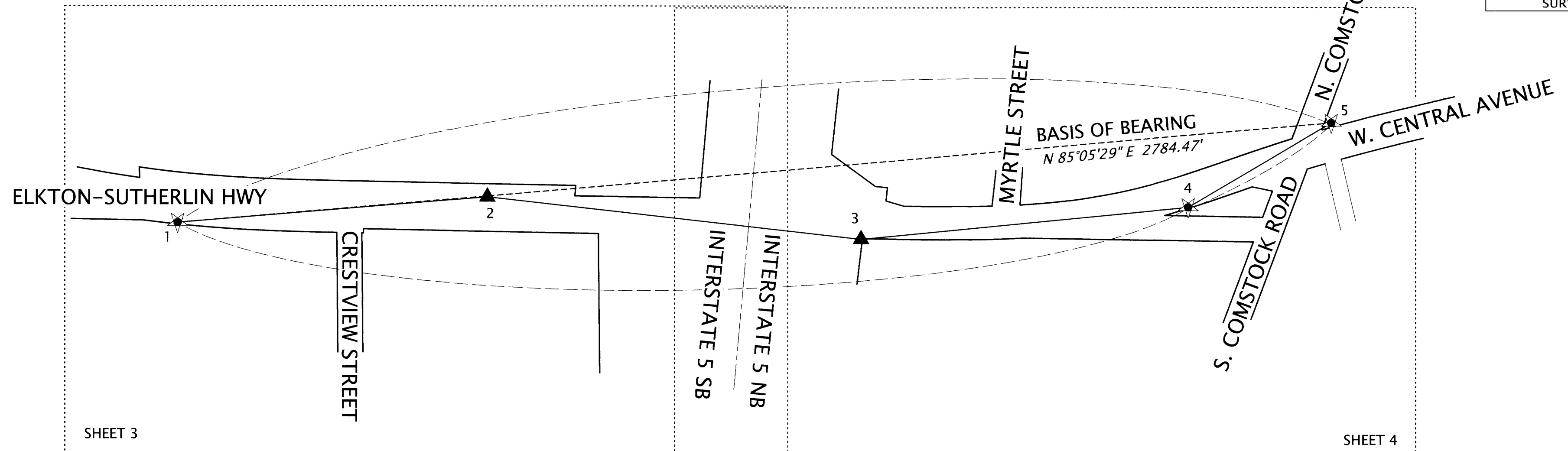


NW 1/4 AND NE 1/4 SEC 19 T25S R5W WM
BEING PART OF THE LEVI KNOTT DLC 53
CITY OF SUTHERLIN, DOUGLAS COUNTY, OREGON

FILED
Date: 2-24-2023 By: DJ
This survey consists of:
Map: ST HWY 138-018A-G
Narrative:
Corner Rpt:
DOUGLAS COUNTY
SURVEYOR



BASIS OF BEARING,
CONTROL NETWORK SCHEMATIC
AND SHEET LAYOUT
NOT TO SCALE

NARRATIVE:

SUTHERLIN PROJECT CONTROL:

THE BASIS OF BEARINGS WAS HELD BETWEEN CONTROL MONUMENTS 1 AND 5, THE BEARING BEING NORTH 85°05'29" EAST THE COORDINATES FOR THIS SURVEY IS THE OREGON COORDINATE REFERENCE SYSTEM (OCRS) - COTTAGE GROVE - CANYONVILLE ZONE. THE OCRS NORTHING AND EASTING PROJECTION PARAMETERS ARE REFERENCED IN O.A.R. 734-005-0015. HORIZONTAL DATUM IS NAD 83 (2011) EPOCH 2010.00. ALL LINEAR VALUES ARE EXPRESSED IN INTERNATIONAL FEET. PRIMARY CONTROL CONSISTS OF THREE PRIMARY PROJECT CONTROL STATIONS AND TWO SECONDARY CONTROL STATIONS. TWO-HOUR STATIC SESSIONS WERE OBSERVED AT PROJECT CONTROL STATIONS 1, 4, AND 5. ALL PROJECT CONTROL STATION POSITIONS WERE ESTABLISHED USING A COMBINATION OF GLOBAL NAVIGATION SATELLITE SYSTEM (GNSS) OBSERVATIONS, TERRESTRIAL TOTAL STATION MEASUREMENTS, AND DIGITAL LEVEL OBSERVATIONS. GNSS BASELINE VECTORS, TOGETHER WITH TERRESTRIAL OBSERVATIONS, WERE ADJUSTED USING LEAST SQUARES (STARNET V9.0). THE NETWORK WAS CONSTRAINED USING VALUES FROM ONLINE POSITIONING USER SERVICE (OPUS) STATIC SOLUTIONS FOR PRIMARY CONTROL STATIONS 1, 4, AND 5, HOLDING STATION 1 AND A WEIGHTED OPUS-STATIC POSITION FOR STATIONS 4 AND 5. THE RESULTING ERROR SEMI-MAJOR AXIS LENGTHS, AT THE 95% CONFIDENCE LEVEL FOR PRIMARY AND SECONDARY CONTROL POINTS, WERE UNDER 0.03 FEET IN ABSOLUTE ACCURACY. FINAL PROJECT COORDINATES WERE ESTABLISHED BY PROJECTING THE ADJUSTED NETWORK POSITIONS TO THE OCRS - COTTAGE GROVE CANYONVILLE ZONE, REPRESENTING APPROXIMATE GROUND DISTANCES. ALL OBSERVATIONS WERE MADE IN NOVEMBER AND DECEMBER 2020, UTILIZING LEICA TS15 TOTAL STATION AND LEICA GS14 GNSS RECEIVERS WITH CS15 DATA COLLECTOR.

LEGEND	
	SET GPS STATION
	SET NETWORK POINT
	TERRESTRIAL OBSERVATION
	GNSS OBSERVATION

CONTROL MONUMENT LIST

PT. NO.	OCRS NORTHING	OCRS EASTING	STATION	OFFSET	DATE	DESCRIPTION
1	201555.76	161491.75	1253+84.70	45.54' RT	11/19/2020	SET 5/8" IR W/ RPC "DEA CONTROL", FLUSH
2	201617.46	162234.84	1261+22.93	43.30' LT	11/19/2020	SET 5/8" IR W/ RPC "DEA CONTROL", FLUSH
3	201514.98	163134.32	1270+24.22	41.75' RT	11/20/2020	SET 5/8" IR W/ RPC "DEA CONTROL", FLUSH
4	201591.10	163921.98	1278+07.23	37.41' RT	11/20/2020	SET 5/8" IR W/ RPC "DEA CONTROL", FLUSH
5	201794.02	164266.01	1281+94.55	50.01' LT	11/19/2020	SET 5/8" IR W/ RPC "DEA CONTROL", FLUSH

**DAVID EVANS
AND ASSOCIATES INC.**
2100 S River Parkway, Suite 100
Portland Oregon 97201
Phone: 503.223.6663

REGISTERED
PROFESSIONAL
LAND SURVEYOR

OREGON
JANUARY 10, 2006
ROBERT R. JACKSON
47721
RENEWS: 6/30/2023

FILE NAME: S_K22388_CRR_SUTHERLIN.DGN
OREGON DEPARTMENT OF TRANSPORTATION
HORIZONTAL CONTROL, RECOVERY AND RETRACEMENT MAP
DOUGLAS COUNTY ADA CURB RAMPS
MILEPOSTS 24.10 TO 24.47
ELKTON - SUTHERLIN HIGHWAY
DOUGLAS COUNTY, OREGON

ODOT REGION 3 HEAD QUARTERS
3500 NW STEWART PARKWAY
ROSEBURG, OREGON 97470 KEY NO. 22388
DECEMBER 15, 2021
SCALE: NONE
SHEET 2 OF 5