

RECOVERED MONUMENTS									
PT. NO.	OCRS	NORTHING	OCRS EASTING	ELEVATION	STATION	OFFSET (- IS LEFT)	DATE	DESCRIPTION	REFERENCE
1112	138009.163	160726.546	-	-	-	-	4/25/2012	FD. 1-1/4" O.D. IRON PIPE 0.2 FT. ABOVE SURFACE GOOD CONDITION	RMC-24
1113	137927.068	160754.008	-	-	-	-	1/31/2018	RESET 2" ALUMINUM DISK STAMPED "ODOT RESET" FLUSH WITH GROUND IN ORIGINAL POSITION	MI46-14B
1114	138043.722	160531.264	-	-	-	-	4/3/2012	DESTROYED 1 1/4" YELLOW PLASTIC CAP STAMPED "R. BROWN PLS 2391" FD. IN CONCRETE SIDEWALK GOOD CONDITION	MI46-14B
1115	137921.770	160466.870	-	-	-	-	4/3/2012	FD. 1-1/4" YELLOW PLASTIC CAP STAMPED "R. BROWN PLS 2391" FD. FLUSH IN AC. SURFACE ALONG SPRUCE STREET GOOD CONDITION	MI46-14B
1116	137912.447	160484.527	-	-	-	-	4/2/2012	FD. 1-1/4" YELLOW PLASTIC CAP STAMPED "R. BROWN PLS 2391" FD. IN AC. SURFACE GOOD CONDITION	MI46-14B
1117	137618.793	160537.471	-	-	"ML"26+85.87	-30.16	1/31/2018	RESET 5/8" X 30" IRON REBAR WITH 2" ALUMINUM CAP STAMPED "ODOT RESET" 0.1' BELOW SIDEWALK IN ORIGINAL POSITION	MI46-14B
1118	137632.115	160496.772	-	-	"ML"26+71.64	30.11	1/31/2018	RESET 5/8" X 10" IRON REBAR IN CONCRETE WITH 2" ALUMINUM CAP STAMPED "ODOT RESET" FLUSH WITH GROUND IN ORIGINAL POSITION	MI46-14B
1119	137698.088	160371.386	-	-	"ML"25+29.96	30.23	4/25/2012	DESTROYED 1 1/4" YELLOW PLASTIC CAP STAMPED "R. BROWN PLS 2391" FD. FLUSH IN TOP OF CONC. CURB AT SE CORNER OF INTERSECTION OF SPRUCE AND WASHINGTON	MI46-14B
1124	137704.746	160307.083	-	-	"ML"24+69.97	54.34	4/3/2012	FD. 1-1/4" YELLOW PLASTIC CAP STAMPED "R. BROWN PLS 2391" 0.1 FT BELOW SURFACE GOOD CONDITION	MI46-14B
1125	137815.730	160096.923	-	-	"ML"22+32.31	54.19	4/26/2012	FD. 1-1/4" YELLOW PLASTIC CAP STAMPED "R. BROWN PLS 2391" 0.2 FT BELOW SURFACE GOOD CONDITION	MI46-14B
1126	137845.118	160022.076	-	-	"ML"21+52.39	63.10	4/26/2012	FD. 5/8" IRON REBAR BENT SOUTH 0.2 FT ABOVE SURFACE TIED WHERE ROD ENTERS GROUND FAIR CONDITION	MI46-14B
1132	137608.790	160536.056	-	-	"ML"27+17.27	32.42	11/12/2013	RESET 2" ALUMINUM DISK STAMPED "ODOT RESET" FLUSH WITH GROUND IN ORIGINAL POSITION	MI31-20
1165	137738.823	160358.954	-	-	"ML"24+99.96	0.00	5/20/2012	FD. 1-1/4" SQUARE HEAD BOLT IN 9 1/2" DIAMETER MONUMENT BOX 1.2 FT BELOW SURFACE AT INTERSECTION OF SPRUCE AND WASHINGTON STREETS	CS 39/85

CONTROL MONUMENTS									
PT. NO.	OCRS	NORTHING	OCRS EASTING	ELEVATION	STATION	OFFSET (- IS LEFT)	DATE	DESCRIPTION	REFERENCE
9	138072.514	160510.512	449.27	-	-	-	4/19/2012	DESTROYED 5/8" X 30" IRON REBAR WITH A 1 1/2" BRASS CAP STAMPED "ODOT CONTROL 9"	ST. HWY. 138-015
13	137747.166	160392.978	456.07	-	"ML"25+26.17	-23.25	4/19/2012	DESTROYED 1" COPPER DISK STAMPED "ODOT CONTROL 13" FLUSH WITH CONCRETE SIDEWALK	ST. HWY. 138-015
13R	137746.214	160403.664	456.56	-	"ML"25+36.06	-27.39	7/13/2015	DESTROYED 1" COPPER DISK STAMPED "ODOT CONTROL 13R" FLUSH WITH CONCRETE SIDEWALK TIED USING 3 POINT RESECTION	ST. HWY. 138-015
14	137853.049	160133.802	461.45	-	"ML"22+47.52	3.97	4/19/2012	DESTROYED 5/8" X 30" IRON REBAR WITH A 1 1/2" BRASS CAP STAMPED "ODOT CONTROL 14"	ST. HWY. 138-015
525	137859.805	159990.544	449.30	-	"ML"21+17.65	64.81	11/12/2013	FD. 1" COPPER DISK STAMPED "ODOT CONTROL 525" IN CONC. WALK	ST. HWY. 138-015
526	137950.028	160214.498	446.60	-	-	-	11/12/2013	FD. 1" COPPER DISK STAMPED "ODOT CONTROL 526" IN CONC. WALK	ST. HWY. 138-015

SET R/W MONUMENTS									
PT. NO.	OCRS	NORTHING	OCRS EASTING	ELEVATION	STATION	OFFSET (- IS LEFT)	DATE	DESCRIPTION	REFERENCE
4049	137705.864	160304.966	-	-	"SP"106+29.59	-35.00	1/30/2018	SET 5/8" X 30" IRON REBAR WITH 2" ALUMINUM CAP STAMPED "ODOT RIGHT OF WAY" FLUSH WITH GROUND	-
4052	137696.568	160374.770	-	-	"SP"106+54.15	31.00	1/30/2018	SET 5/8" X 30" IRON REBAR WITH 2" ALUMINUM CAP STAMPED "ODOT RIGHT OF WAY" FLUSH WITH GROUND	-
4053	137695.303	160551.871	-	-	"ML"26+90.91	-51.48	1/30/2018	SET 2" ALUMINUM DISK STAMPED "ODOT RIGHT OF WAY" FLUSH WITH CONCRETE	-
4054	137659.031	160593.899	-	-	"ML"27+45.00	-39.00	1/30/2018	SET 5/8" X 30" IRON REBAR WITH 2" ALUMINUM CAP STAMPED "ODOT RIGHT OF WAY" FLUSH WITH GROUND	-
4055	137651.070	160589.701	-	-	"ML"27+45.00	-30.00	1/30/2018	SET 5/8" X 30" IRON REBAR WITH 2" ALUMINUM CAP STAMPED "ODOT RIGHT OF WAY" 0.1' BELOW GROUND	-
4056	137915.632	160478.494	-	-	"DO"14+59.27	167.95	1/30/2018	SET 2" ALUMINUM DISK STAMPED "ODOT RIGHT OF WAY" FLUSH WITH GROUND	-
4057	138011.041	160524.372	-	-	"DO"14+55.64	62.15	1/30/2018	SET 2" ALUMINUM DISK STAMPED "ODOT RIGHT OF WAY" FLUSH WITH GROUND	-
4058	138024.966	160567.071	-	-	"DO"14+87.00	30.00	-	CALCULATED POINT - AT WALL FACE ANGLE POINT	-
4068	137987.973	160807.206	-	-	"DO"17+16.89	-48.65	1/30/2018	SET 5/8" X 30" IRON REBAR WITH 2" ALUMINUM CAP STAMPED "ODOT RIGHT OF WAY" FLUSH WITH GROUND	-
4069	137983.419	160825.270	-	-	"DO"17+35.00	-53.00	-	CALCULATED POINT - CLOSE TO TRACKS	-
4070	137969.710	160840.667	-	-	"DO"17+55.00	-48.00	-	CALCULATED POINT - CLOSE TO TRACKS	-
4073	137923.038	160750.493	-	-	"DO"16+96.78	35.18	1/29/2018	SET 5/8" X 30" IRON REBAR WITH 2" ALUMINUM CAP STAMPED "ODOT RIGHT OF WAY" 0.5' BELOW GROUND	-
4074	137909.093	160758.116	-	-	"DO"17+10.00	44.00	-	CALCULATED POINT - CLOSE TO TRACKS	-
4075	137892.178	160777.478	-	-	"DO"17+35.00	50.00	-	CALCULATED POINT - CLOSE TO TRACKS	-
5052	138340.881	159298.025	-	-	"ML"2"17+84.81	42.35	1/30/2018	SET 2" ALUMINUM DISK STAMPED "ODOT RIGHT OF WAY" FLUSH WITH GROUND	-
5053	138336.757	159302.448	-	-	"ML"2"17+79.93	39.44	1/30/2018	SET 2" ALUMINUM DISK STAMPED "ODOT RIGHT OF WAY" FLUSH WITH GROUND	-
5054	138334.292	159306.149	-	-	"ML"2"17+76.03	38.00	1/30/2018	SET 2" ALUMINUM DISK STAMPED "ODOT RIGHT OF WAY" FLUSH WITH GROUND	-
5055	138306.847	159357.549	-	-	"ML"2"17+22.00	27.80	1/30/2018	SET 2" ALUMINUM DISK STAMPED "ODOT RIGHT OF WAY" FLUSH WITH GROUND	-
5056	138301.425	159355.489	-	-	"ML"2"17+22.00	22.00	1/30/2018	SET 5/8" X 30" IRON REBAR WITH 2" ALUMINUM CAP STAMPED "ODOT RIGHT OF WAY" 0.1' BELOW GROUND	-
5058	138399.006	159147.097	-	-	"ML"2"19+29.50	81.99	1/30/2018	SET 2" ALUMINUM DISK STAMPED "ODOT RIGHT OF WAY" FLUSH WITH GROUND	-
5059	138399.128	159143.397	-	-	"ML"2"19+33.00	82.00	1/30/2018	SET 5/8" X 30" IRON REBAR WITH 2" ALUMINUM CAP STAMPED "ODOT RIGHT OF WAY" 0.1' ABOVE GROUND IN BUSH	-
5060	138346.651	159141.827	-	-	"ML"2"19+33.00	29.50	1/30/2018	SET 5/8" X 30" IRON REBAR WITH 2" ALUMINUM CAP STAMPED "ODOT RIGHT OF WAY" 0.1' ABOVE GROUND IN BUSH (BEGIN ACCESS CONTROL)	-
5061	138342.269	159137.629	-	-	"ML"2"19+37.00	25.00	1/30/2018	SET 5/8" X 25" IRON REBAR WITH 2" ALUMINUM CAP STAMPED "ODOT RIGHT OF WAY" 0.1' BELOW GROUND	-
5062	138342.580	159124.451	-	-	"ML"2"19+50.00	25.00	1/30/2018	SET 5/8" X 30" IRON REBAR WITH 2" ALUMINUM CAP STAMPED "ODOT RIGHT OF WAY" FLUSH WITH GROUND	-
5063	138339.580	159124.391	-	-	"ML"2"19+50.00	22.00	1/30/2018	SET 2" ALUMINUM DISK STAMPED "ODOT RIGHT OF WAY" FLUSH WITH GROUND	-

- POINT LEGEND**
- SET R/W MONUMENT
  - FOUND MONUMENT
  - ⊗ DESTROYED MONUMENT
  - △ FOUND NETWORK POINT
  - ⊗ DESTROYED NETWORK POINT
  - ◇ FOUND STRATEGIC POINT
  - ⊗ DESTROYED STRATEGIC POINT
  - CALCULATED POINT

FOR MONUMENTS NOT SHOWN ON INDIVIDUAL SHEETS SEE SHEETS 1 AND 2

FOR LINE LEGEND SEE SHEET 1

P.E. = PERMANENT EASEMENT

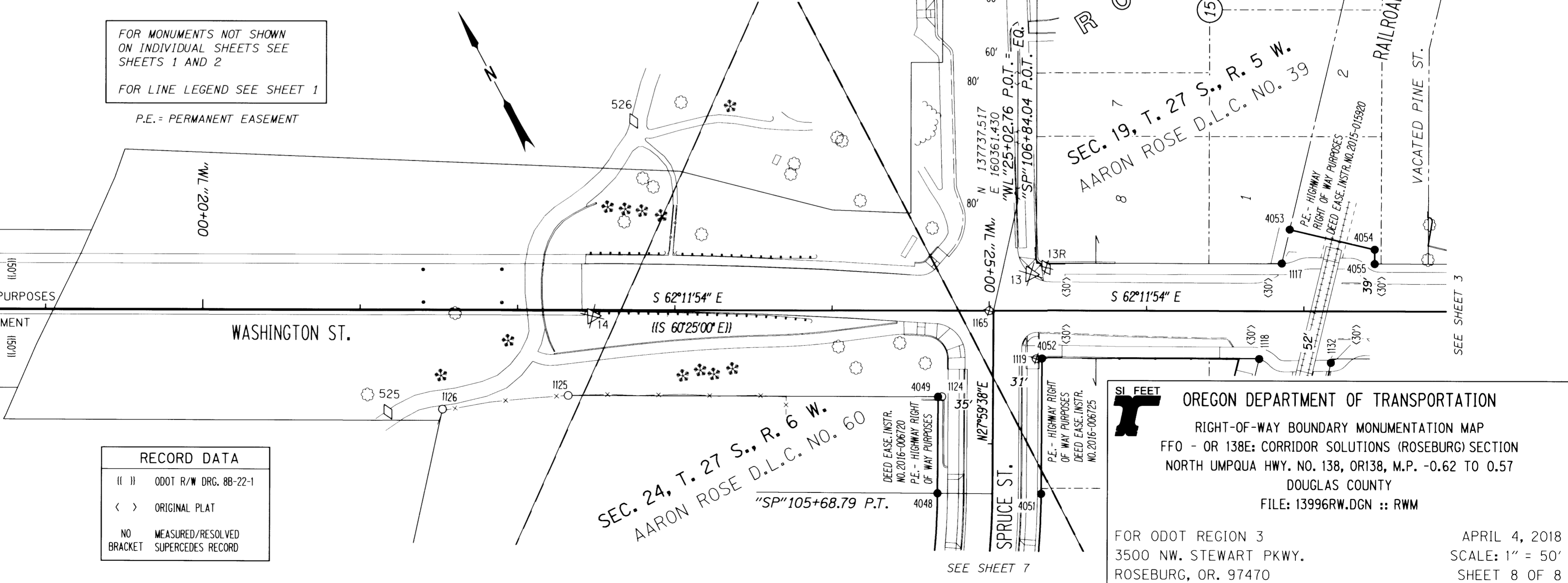
SOUTH UMPQUA RIVER

REGISTERED PROFESSIONAL LAND SURVEYOR

*Marshall R. Wagstaff*

OREGON JANUARY 9, 2001 MARSHALL R. WAGSTAFF 49476 EXPIRES: 6/30/2018

RECORD DATA	
(I I)	ODOT R/W ORG. 88-22-1
< >	ORIGINAL PLAT
NO BRACKET	MEASURED/RESOLVED SUPERCEDES RECORD



FILED

NW1/4 Sec 19, T. 27 S., R. 5 W., W.M.  
NE1/4 Sec 24, T. 27 S., R. 6 W., W.M.

Date: 4-5-2018 By: JC

This survey consist of:  
Map: ST HWY 138-016 A-H

Narrative:

Corner Rpt: DOUGLAS COUNTY SURVEYOR

SCALE 1" = 50'

50 25 0 50 FEET

SI FEET

OREGON DEPARTMENT OF TRANSPORTATION

RIGHT-OF-WAY BOUNDARY MONUMENTATION MAP

FFO - OR 138E CORRIDOR SOLUTIONS (ROSEBURG) SECTION

NORTH UMPQUA HWY. NO. 138, OR138, M.P. -0.62 TO 0.57

DOUGLAS COUNTY

FILE: 13996RW.DGN :: RWM

FOR ODOT REGION 3  
3500 NW. STEWART PKWY.  
ROSEBURG, OR. 97470

APRIL 4, 2018  
SCALE: 1" = 50'  
SHEET 8 OF 8

ST HWY 138-016 H