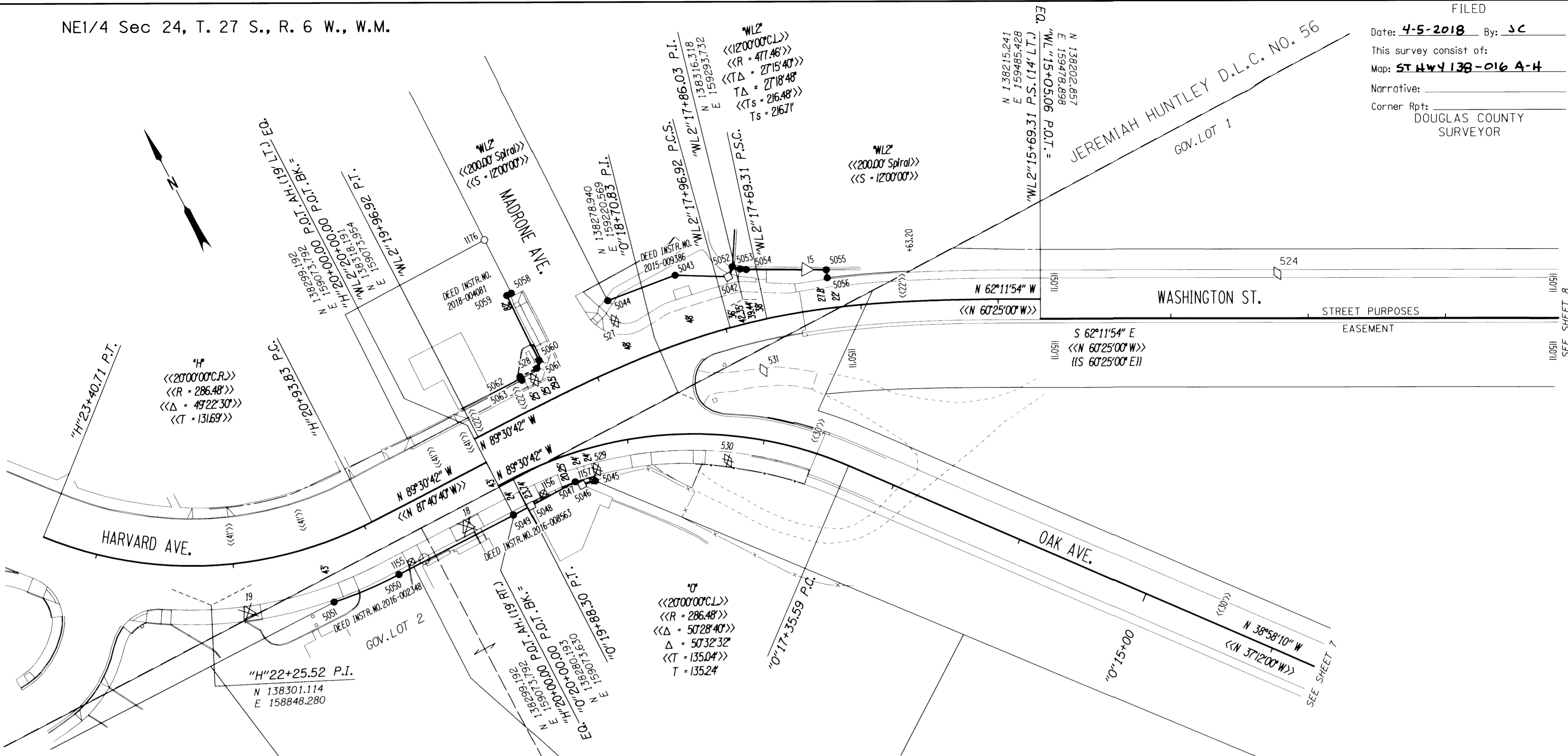


NE1/4 Sec 24, T. 27 S., R. 6 W., W.M.

FILED

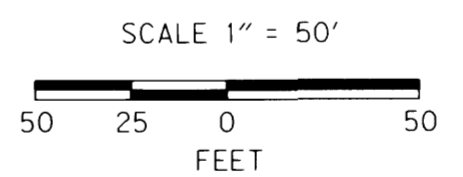
Date: 4-5-2018 By: JC  
 This survey consist of:  
 Map: ST HWY 138-016 A-H  
 Narrative:  
 Corner Rpt: DOUGLAS COUNTY SURVEYOR



PT. NO.	OCRS NORTHING	OCRS EASTING	ELEVATION	STATION	OFFSET (- IS LEFT)	DATE	DESCRIPTION	REFERENCE
1155	138260.890	158991.739	-	"H"20+81.72	-39.00	4/26/2012	DESTROYED 5/8" IRON ROD FLUSH WITH SURFACE GOOD CONDITION	M68-14
1156	138259.970	159099.667	-	"O"19+72.72	-19.61	4/26/2012	DESTROYED 1 1/4" YELLOW PLASTIC CAP STAMPED "AA SURVEYING" 0.2 FT ABOVE SURFACE GOOD CONDITION	M144-7
1157	138251.625	159136.389	-	"O"19+32.17	-22.99	4/26/2012	DESTROYED 1 1/4" YELLOW PLASTIC CAP STAMPED "AA SURVEYING" 0.4 FT ABOVE SURFACE GOOD CONDITION	M144-7
1176	138442.288	159147.893	-	-	-	2/25/2014	FD. 3/4" IRON ROD AT BACK SIDEWALK 0.5' BELOW SURFACE GOOD CONDITION	M45-32

PT. NO.	OCRS NORTHING	OCRS EASTING	ELEVATION	STATION	OFFSET (- IS LEFT)	DATE	DESCRIPTION	REFERENCE
15	138313.963	159344.614	457.62	-	-	4/18/2012	FD. 1" COPPER DISK STAMPED "ODOT CONTROL 15" FLUSH WITH CONCRETE CURB	ST. HWY. 138-015
18	138264.533	159039.672	465.28	"H"20+33.82	-34.95	2/11/2014	DESTROYED 1" COPPER DISK STAMPED "ODOT CONTROL 18" FLUSH WITH CONCRETE SIDEWALK	ST. HWY. 138-015
19	138283.653	158869.437	466.93	"H"21+93.68	-36.72	2/11/2014	DESTROYED 1" COPPER DISK STAMPED "ODOT CONTROL 19" FLUSH WITH CONCRETE SIDEWALK	ST. HWY. 138-015
524	138150.899	159646.609	-	"WL"16+77.65	-32.26	10/3/2012	FD. 1" COPPER DISK STAMPED "ODOT CONTROL 524" IN CONC. WALK	ST. HWY. 138-015
527	138345.997	159204.174	461.92	-	-	11/4/2013	DESTROYED 1" COPPER DISK STAMPED "ODOT CONTROL 527" IN CONC. WALK	ST. HWY. 138-015
528	138335.495	159132.435	463.53	-	-	11/4/2013	DESTROYED 1" COPPER DISK STAMPED "ODOT CONTROL 528" IN CONC. WALK	ST. HWY. 138-015
529	138257.045	159142.400	462.36	-	-	11/4/2013	DESTROYED 1" COPPER DISK STAMPED "ODOT CONTROL 529" IN CONC. WALK	ST. HWY. 138-015
530	138218.261	159229.825	459.47	-	-	11/4/2013	DESTROYED 1" COPPER DISK STAMPED "ODOT CONTROL 530" IN CONC. WALK	ST. HWY. 138-015
531	138263.789	159283.174	-	-	-	11/8/2013	FD. MAG. NAIL AND WASHER STAMPED "ODOT 531"	ST. HWY. 138-015

PT. NO.	OCRS NORTHING	OCRS EASTING	ELEVATION	STATION	OFFSET (- IS LEFT)	DATE	DESCRIPTION	REFERENCE
5042	138335.786	159292.117	-	"WL"2"17+89.00	36.00	-	CALCULATED POINT - FALLS ON FIRE HYDRANT	-
5043	138354.853	159258.408	-	"WL"2"18+23.00	48.00	1/30/2018	SET 5/8" X 30" IRON REBAR WITH 2" ALUMINUM CAP STAMPED "ODOT RIGHT OF WAY" 0.1' BELOW GROUND	-
5044	138361.481	159206.418	-	"WL"2"18+71.76	48.00	1/30/2018	SET 2" ALUMINUM DISK STAMPED "ODOT RIGHT OF WAY" FLUSH WITH GROUND	-
5045	138250.376	159137.423	-	"O"19+30.78	-24.00	1/30/2018	SET 5/8" X 30" IRON REBAR WITH 2" ALUMINUM CAP STAMPED "ODOT RIGHT OF WAY" FLUSH WITH GROUND	-
5046	138252.254	159127.676	-	"O"19+41.62	-24.00	-	CALCULATED POINT - AREA NOT ACCESSIBLE	-
5047	138256.621	159124.243	-	"O"19+46.06	-20.25	1/30/2018	SET 2" ALUMINUM DISK STAMPED "ODOT RIGHT OF WAY" FLUSH WITH GROUND	-
5048	138256.314	159087.826	-	"O"19+85.36	-23.74	-	CALCULATED POINT - FALLS IN WALL AT FENCE/RAILING POST	-
5049	138256.193	159073.425	-	"H"20+00.00	-43.00	1/30/2018	SET 5/8" X 30" IRON REBAR WITH 2" ALUMINUM CAP STAMPED "ODOT RIGHT OF WAY" FLUSH WITH GROUND	-
5050	138256.993	158979.598	-	"H"20+93.83	-43.00	1/30/2018	SET 5/8" X 30" IRON REBAR WITH 2" ALUMINUM CAP STAMPED "ODOT RIGHT OF WAY" FLUSH WITH GROUND	-
5051	138261.429	158928.450	-	"H"21+38.52	-43.00	1/30/2018	SET 5/8" X 22" IRON REBAR WITH 2" ALUMINUM CAP STAMPED "ODOT RIGHT OF WAY" FLUSH WITH GROUND	-



RECORD DATA	
	ODOT R/W DRG. 88-22-1
<< >>	COUNTY ROAD PLAN: SC09 1974-027
NO	MEASURED/RESOLVED
BRACKET	SUPERCEDES RECORD

REGISTERED PROFESSIONAL LAND SURVEYOR  
*Marshall R. Wagstaff*  
 OREGON  
 JANUARY 9, 2001  
 MARSHALL R. WAGSTAFF  
 49476  
 EXPIRES: 6/30/2018

- POINT LEGEND**
- SET R/W MONUMENT
  - FOUND MONUMENT
  - ⊗ DESTROYED MONUMENT
  - △ FOUND NETWORK POINT
  - ⊗ DESTROYED NETWORK POINT
  - ◇ FOUND STRATEGIC POINT
  - ⊗ DESTROYED STRATEGIC POINT
  - CALCULATED POINT
- FOR MONUMENTS NOT SHOWN ON INDIVIDUAL SHEETS SEE SHEETS 1 AND 2  
 FOR LINE LEGEND SEE SHEET 1

**OREGON DEPARTMENT OF TRANSPORTATION**  
 RIGHT-OF-WAY BOUNDARY MONUMENTATION MAP  
 FFO - OR 138E: CORRIDOR SOLUTIONS (ROSEBURG) SECTION  
 NORTH UMPQUA HWY. NO. 138, OR138, M.P. -0.62 TO 0.57  
 DOUGLAS COUNTY  
 FILE: 13996RW.DGN :: RWM

FOR ODOT REGION 3  
 3500 NW. STEWART PKWY.  
 ROSEBURG, OR. 97470

APRIL 4, 2018  
 SCALE: 1" = 50'  
 SHEET 6 OF 8

ST HWY 138-016 F