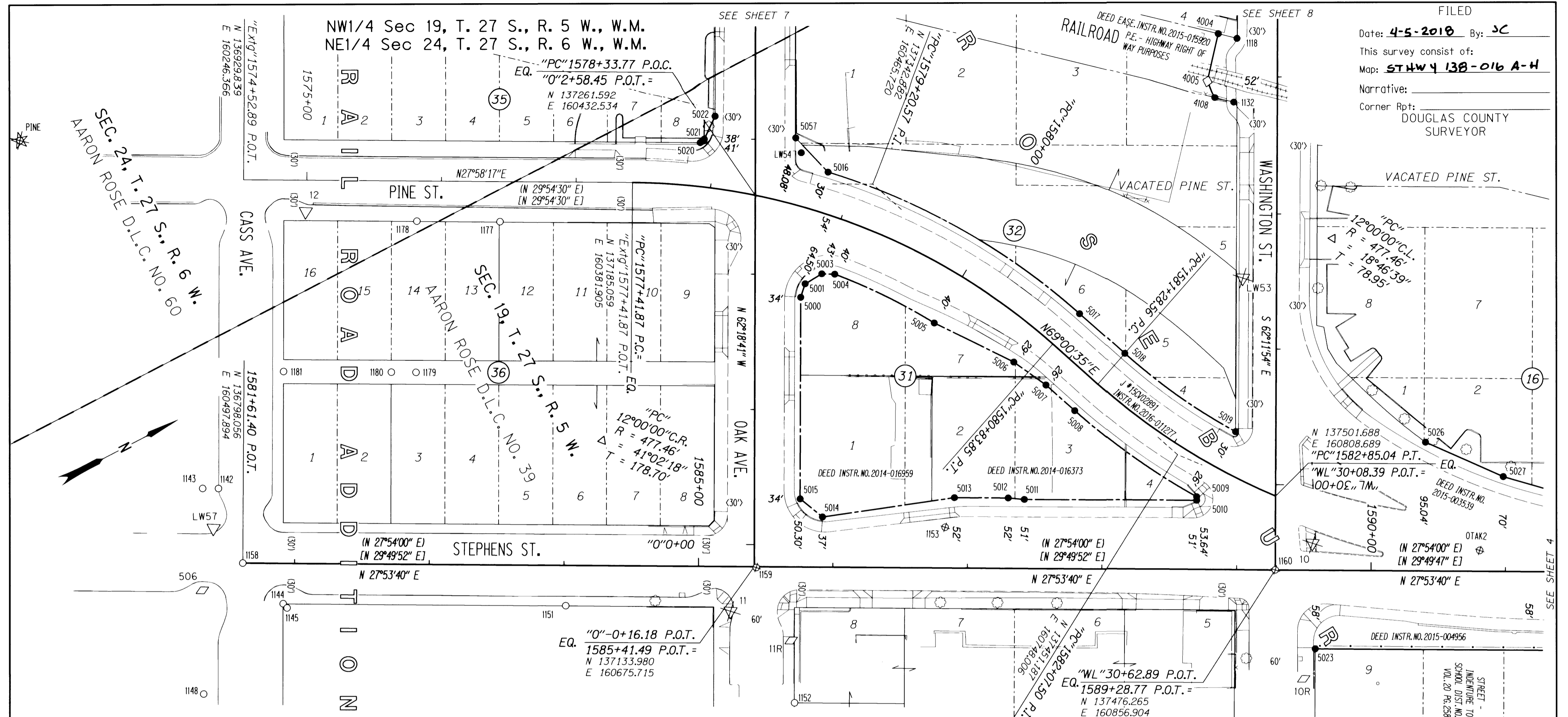


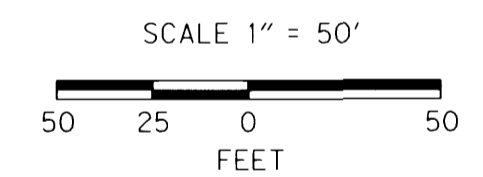
FILED
 Date: 4-5-2018 By: JC
 This survey consist of:
 Map: STHWY 138-016 A-H
 Narrative:
 Corner Rpt: DOUGLAS COUNTY SURVEYOR



RECOVERED MONUMENTS FOR SET R/W POINTS SEE TABLE SHEET 2

PT. NO.	OCRS	NORTHING	OCRS EASTING	ELEVATION	STATION	OFFSET (- IS LEFT)	DATE	DESCRIPTION	REFERENCE
1132	137608.790	160536.056	-	-	"WL"27+17.27	32.42	1/31/2018	RESET 2" ALUMINUM DISK STAMPED "ODOT RESET" FLUSH WITH GROUND IN ORIGINAL POSITION	MI31-20
1142	136807.499	160440.692	-	-	-	-	4/25/2012	FD. BRASS SCREW IN LEAD WOOL FLUSH IN TOP OF CONCRETE CURB GOOD CONDITION	MI34-24
1143	136797.085	160435.213	-	-	-	-	4/25/2012	FD. BRASS SCREW IN LEAD WOOL FLUSH AT BACK OF SIDEWALK GOOD CONDITION	MI34-24
1144	136810.749	160538.413	-	-	1581+91.57	29.87	4/26/2012	FD. 1-1/2" O.D. IRON PIPE FILLED WITH CONCRETE 0.1 FT. BELOW CONCRETE SIDEWALK GOOD CONDITION	M33-21
1145	136811.918	160542.545	-	-	1581+94.54	32.98	4/26/2012	FD. 1-1/4" BRASS DISK SCRIBED WITH SCRIBED "X" IN 8" X 8" CONCRETE PEDESTAL 0.2 FT. BELOW SURFACE GOOD CONDITION	M33-21
1148	136727.390	160570.454	-	-	-	-	4/25/2012	FD. SCRIBED "X" AT BACK OF CONCRETE SIDEWALK NEAR BLDG. CORNER	CS 11/34
1151	136996.235	160636.640	-	-	1584+01.46	29.91	4/25/2012	FD. 3/4" IRON REBAR AT BACK OF CONCRETE SIDEWALK 0.1 FT. BELOW SURFACE GOOD CONDITION	MI40-69
1152	137113.980	160778.886	-	-	-	-	4/3/2012	FD. 3/4" O.D. PIPE 0.2 FT. ABOVE SURFACE GOOD CONDITION	M25-26
1153	137273.289	160715.520	-	-	1586+83.23	-30.00	4/3/2012	FD. 5/8" IRON ROD AT EDGE OF CONCRETE SIDE WALK TIED ON TOP OF WALK. 0.3 FT. BELOW SURFACE GOOD CONDITION	M21-26
1158	136798.056	160497.894	-	-	1581+61.40	0.00	5/20/2012	FD. 2 3/4" BRASS DISK WITH PUNCH IN CENTER 0.75 FT BELOW PAVED SURFACE NO MONUMENT BOX AT INTERSECTION OF STEPHENS AND CASS STREETS GOOD CONDITION STA. 1581+61.4 FROM DRG 5B-5-21A	CS 18/30
1159	137134.971	160676.993	-	-	1585+42.96	0.67	5/20/2012	DESTROYED 2" O.D. IRON PIPE 1.0' BELOW SURFACE NO MONUMENT BOX AT INTERSECTION OF OAK AND STEPHENS STREETS	CS 18/30
1160	137476.265	160856.904	-	-	1589+28.77	0.00	5/10/2012	DESTROYED 2 3/4" BRASS DISK STAMPED "STATE HIGHWAY DEPARTMENT ELEVATION FEET X" IN A 10" DIAMETER MONUMENT BOX 0.65' BELOW A.C. SURFACE GOOD CONDITION AT INTERSECTION OF WASHINGTON AVE. AND STEPHENS STREET STA. 1589+27.7	DRG 5B-5-21A
1177	137084.450	160362.095	-	-	"PI"1576+43.72	29.69	7/13/2015	FD. SCREW WITH 1 3/8" COPPER WASHER STAMPED "2295"	MI65-49
1178	137029.848	160333.214	-	-	"PI"1575+81.95	29.80	7/13/2015	FD. PK NAIL WITH WASHER STAMPED "LS 52989"	MI67-66
1179	136977.495	160432.235	-	-	-	-	7/13/2015	FD. PK NAIL WITH WASHER STAMPED "LS 52989"	MI67-66
1180	136961.319	160423.677	-	-	-	-	7/13/2015	FD. SCREW WITH 1 3/8" COPPER WASHER STAMPED "2295"	MI65-49
1181	136890.471	160386.187	-	-	-	-	7/13/2015	FD. SCREW WITH 1 3/8" COPPER WASHER STAMPED "2295"	MI65-49
OTAK2	137617.817	160914.492	-	-	1590+80.82	-15.33	5/10/2012	DESTROYED PK NAIL AND WASHER STAMPED "OTAK CONTROL 2" FLUSH IN CONCRETE SURFACE	MI34-24

PT. NO.	OCRS	NORTHING	OCRS EASTING	ELEVATION	STATION	OFFSET (- IS LEFT)	DATE	DESCRIPTION	REFERENCE
10	137509.937	160852.285	469.45	469.45	1589+56.37	-19.84	4/18/2012	DESTROYED 1" COPPER DISK STAMPED "ODOT CONTROL 10" FLUSH WITH CONCRETE SIDEWALK	ST. HWY. 138-015
10R	137457.897	160937.973	474.37	474.37	1589+50.46	80.24	7/13/2015	FD. 1" COPPER DISK STAMPED "ODOT CONTROL 10R" FLUSH WITH CONCRETE SIDEWALK TIED USING 3 POINT RESECTION	ST. HWY. 138-015
11	137103.041	160696.825	475.35	475.35	1585+24.02	33.13	4/18/2012	DESTROYED 1" COPPER DISK STAMPED "ODOT CONTROL 11" FLUSH WITH CONCRETE SIDEWALK	ST. HWY. 138-015
11R	137133.056	160736.897	475.58	475.58	1585+69.29	54.51	7/13/2015	FD. 1" COPPER DISK STAMPED "ODOT CONTROL 11R" FLUSH WITH CONCRETE SIDEWALK TIED USING 3 POINT RESECTION	ST. HWY. 138-015
12	136959.918	160288.672	473.01	473.01	"PI"1574+99.30	23.26	4/19/2012	FD. 1" COPPER DISK STAMPED "ODOT CONTROL 12" FLUSH WITH CONCRETE SIDEWALK	ST. HWY. 138-015
506	136762.105	160501.895	-	-	-	-	4/26/2012	FD. MAG. NAIL AND WASHER STAMPED "ODOT 506"	ST. HWY. 138-015
LWS3	137554.522	160654.652	464.35	464.35	"WL"28+47.49	25.11	4/19/2012	DESTROYED 1-1/2" BRASS CAP STAMPED "ODOT CONTROL 53" FLUSH WITH CONCRETE SIDEWALK GOOD CONDITION	ST. HWY. 99-004
LWS4	137306.516	160420.441	467.70	467.70	"O"2+90.03	34.16	4/19/2012	RESET 2" ALUMINUM DISK STAMPED "ODOT RESET" FLUSH WITH GROUND IN ORIGINAL POSITION USING RTK GPS	ST. HWY. 99-004
LWS7	136790.620	160465.052	481.54	481.54	-	-	4/19/2012	FD. 1-1/2" BRASS CAP STAMPED "ODOT CONTROL 57" FLUSH WITH CONCRETE SIDEWALK GOOD CONDITION	ST. HWY. 99-004
PINE	136795.903	160143.691	471.69	471.69	-	-	4/19/2012	DESTROYED 1" COPPER DISK STAMPED "ODOT CONTROL PINE" IN CONCRETE SIDEWALK	ST. HWY. 138-015



P.E. = PERMANENT EASEMENT

- POINT LEGEND**
- SET R/W MONUMENT
 - FOUND MONUMENT
 - ⊗ DESTROYED MONUMENT
 - ✱ DESTROYED GPS STATION
 - △ FOUND NETWORK POINT
 - ⊗ DESTROYED NETWORK POINT
 - ◇ FOUND STRATEGIC POINT
 - CALCULATED POINT

FOR MONUMENTS NOT SHOWN ON INDIVIDUAL SHEETS SEE SHEETS 1 AND 2

FOR LINE LEGEND SEE SHEET 1

REGISTERED PROFESSIONAL LAND SURVEYOR
 Marshall R. Wagstaff
 OREGON
 JANUARY 9, 2001
 MARSHALL R. WAGSTAFF
 49476
 EXPIRES: 6/30/2018

RECORD DATA	
()	ODOT R/W DRG. 5B-5-21A
[]	ODOT R/W DRG. 10B-14-16
< >	ORIGINAL PLAT
NO BRACKET	MEASURED/RESOLVED SUPERCEDES RECORD

SI FEET
OREGON DEPARTMENT OF TRANSPORTATION
 RIGHT-OF-WAY BOUNDARY MONUMENTATION MAP
 FFO - OR 138E: CORRIDOR SOLUTIONS (ROSEBURG) SECTION
 NORTH UMPQUA HWY. NO. 138, OR138, M.P. -.62 TO 0.57
 DOUGLAS COUNTY
 FILE: 13996RW.DGN :: RWM

FOR ODOT REGION 3
 3500 NW. STEWART PKWY.
 ROSEBURG, OR. 97470
 APRIL 4, 2018
 SCALE: 1" = 50'
 SHEET 3 OF 8

ST HWY 138-016 C.