

FILED

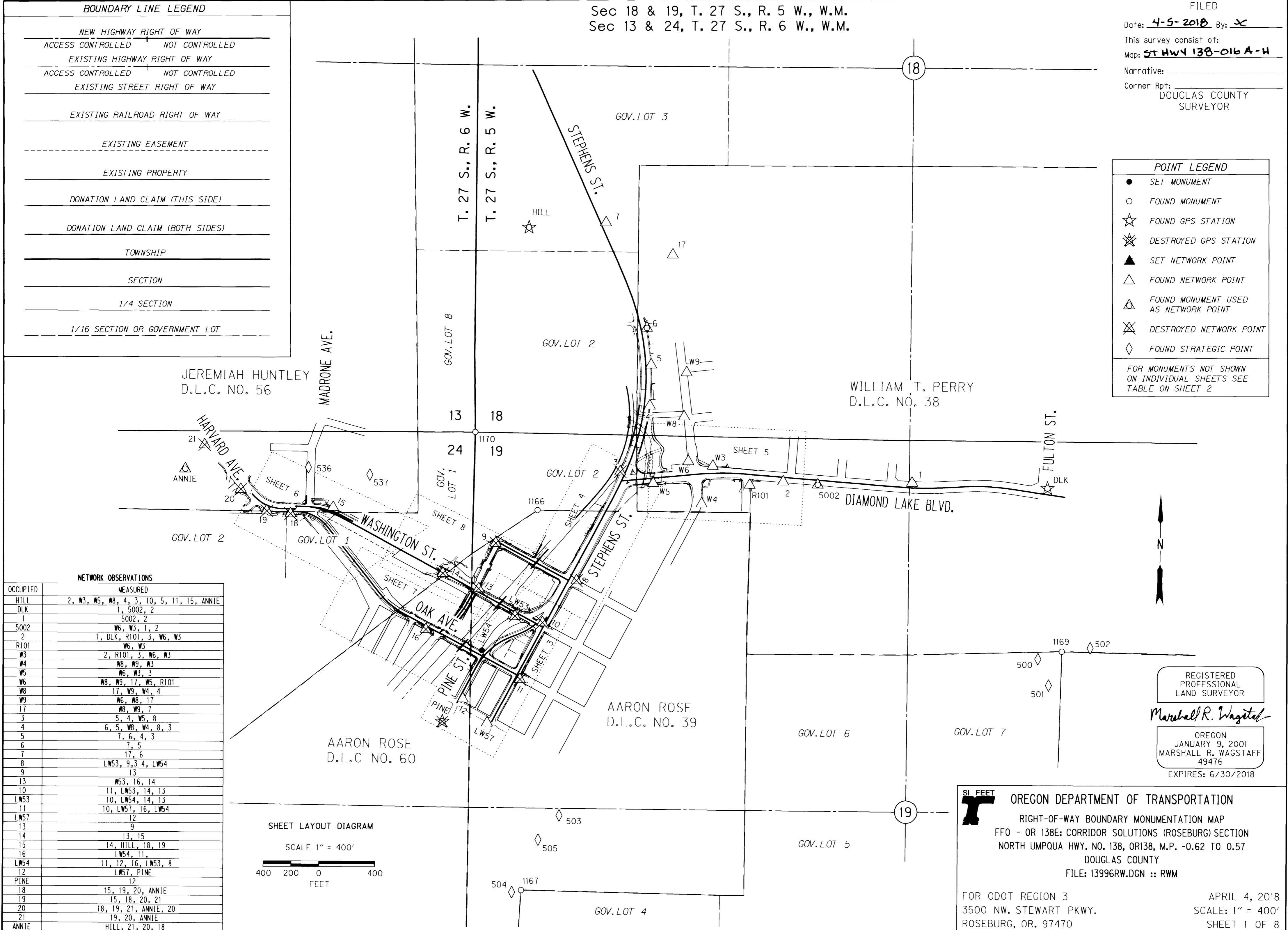
Sec 18 & 19, T. 27 S., R. 5 W., W.M.  
Sec 13 & 24, T. 27 S., R. 6 W., W.M.

Date: 4-5-2018 By: JC  
This survey consist of:  
Map: ST HWY 138-016 A-H  
Narrative: \_\_\_\_\_  
Corner Rpt: \_\_\_\_\_  
DOUGLAS COUNTY  
SURVEYOR

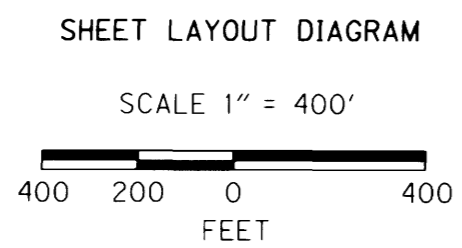
BOUNDARY LINE LEGEND	
NEW HIGHWAY RIGHT OF WAY	ACCESS CONTROLLED
NEW HIGHWAY RIGHT OF WAY	NOT CONTROLLED
EXISTING HIGHWAY RIGHT OF WAY	ACCESS CONTROLLED
EXISTING HIGHWAY RIGHT OF WAY	NOT CONTROLLED
EXISTING STREET RIGHT OF WAY	
EXISTING RAILROAD RIGHT OF WAY	
EXISTING EASEMENT	
EXISTING PROPERTY	
DONATION LAND CLAIM (THIS SIDE)	
DONATION LAND CLAIM (BOTH SIDES)	
TOWNSHIP	
SECTION	
1/4 SECTION	
1/16 SECTION OR GOVERNMENT LOT	

POINT LEGEND	
●	SET MONUMENT
○	FOUND MONUMENT
☆	FOUND GPS STATION
⊗	DESTROYED GPS STATION
▲	SET NETWORK POINT
△	FOUND NETWORK POINT
⊠	FOUND MONUMENT USED AS NETWORK POINT
⊗	DESTROYED NETWORK POINT
◇	FOUND STRATEGIC POINT

FOR MONUMENTS NOT SHOWN ON INDIVIDUAL SHEETS SEE TABLE ON SHEET 2



NETWORK OBSERVATIONS	
OCCUPIED	MEASURED
HILL	2, W3, W5, W8, 4, 3, 10, 5, 11, 15, ANNIE
DLK	1, 5002, 2
1	5002, 2
5002	W6, W3, 1, 2
2	1, DLK, R101, 3, W6, W3
R101	W6, W3
W3	2, R101, 3, W6, W3
W4	W8, W9, W3
W5	W6, W3, 3
W6	W8, W9, 17, W5, R101
W8	17, W9, W4, 4
W9	W6, W8, 17
17	W8, W9, 7
3	5, 4, W5, 8
4	6, 5, W8, W4, 8, 3
5	7, 6, 4, 3
6	7, 5
7	17, 6
8	LW53, 9, 3, 4, LW54
9	13
13	W53, 16, 14
10	11, LW53, 14, 13
LW53	10, LW54, 14, 13
11	10, LW57, 16, LW54
LW57	12
13	9
14	13, 15
15	14, HILL, 18, 19
16	LW54, 11,
LW54	11, 12, 16, LW53, 8
12	LW57, PINE
PINE	12
18	15, 19, 20, ANNIE
19	15, 18, 20, 21
20	18, 19, 21, ANNIE, 20
21	19, 20, ANNIE
ANNIE	HILL, 21, 20, 18



REGISTERED PROFESSIONAL LAND SURVEYOR  
*Marshall R. Wagstaff*  
OREGON  
JANUARY 9, 2001  
MARSHALL R. WAGSTAFF  
49476  
EXPIRES: 6/30/2018

SI FEET  
**OREGON DEPARTMENT OF TRANSPORTATION**  
RIGHT-OF-WAY BOUNDARY MONUMENTATION MAP  
FFO - OR 138E: CORRIDOR SOLUTIONS (ROSEBURG) SECTION  
NORTH UMPQUA HWY. NO. 138, OR138, M.P. -.062 TO 0.57  
DOUGLAS COUNTY  
FILE: 13996RW.DGN :: RWM  
FOR ODOT REGION 3  
3500 NW. STEWART PKWY.  
ROSEBURG, OR. 97470  
APRIL 4, 2018  
SCALE: 1" = 400'  
SHEET 1 OF 8

ST HWY 138-016 A

Date: **4-5-2018** By: **JC**

This survey consist of:

Map: **ST HWY 138-016 A-U**

Narrative:

Corner Rpt: **DOUGLAS COUNTY SURVEYOR**

**NARRATIVE**

**PURPOSE**

THE PURPOSE OF THIS SURVEY IS TO MONUMENT THE NEWLY ACQUIRED RIGHT OF WAY SHOWN ON RIGHT OF WAY DRAWING (DRG) 118-7-5 FOR A PROJECT NAMED "FFO - OR 138E-CORRIDOR SOLUTIONS (ROSEBURG) SECTION" BASED ON FILED SURVEY ST. HWY. 138-015. SURVEY FIELD WORK WAS PERFORMED IN JANUARY OF 2018. ORIGINAL FIELD NOTES ARE ARCHIVED IN FIELD BOOK 4552 IN THE ODOT FILES IN SALEM, OREGON.

**COORDINATES & BASIS OF BEARING**

THE BEARINGS ARE BASED ON THE OREGON COORDINATE REFERENCE SYSTEM (OCRS) COTTAGE GROVE - CANYONVILLE ZONE, NAD 83(OCRS96) EPOCH2002. THE OCRS COORDINATES ARE EQUAL TO OR CLOSE TO TRUE GROUND DISTANCES. ALL COORDINATES ARE IN INTERNATIONAL FEET. COORDINATES AND ELEVATIONS SHOWN ON CONTROL AND RECOVERED MONUMENTS ARE FROM FILED SURVEY ST. HWY. 138-015.

**HORIZONTAL CONTROL**

THE ORIGINAL STATIC NETWORK POINTS "HILL", "PINE" AND "DLK" FORM THE BASIS OF BEARING AND COORDINATE SYSTEM FOR THIS PROJECT AS FILED IN SURVEY ST. HWY. 138-015. A GPS CALIBRATION / TRANSFORMATION WAS DEVELOPED HOLDING THE ABOVE POINTS IN ORDER TO USE THE CURRENT OREGON REAL-TIME GNSS NETWORK (ORGN) TO SET THE RIGHT OF WAY MONUMENTS. MONUMENTS WERE SET USING REAL-TIME KINEMATIC METHODS AND CHECKED A MINIMUM OF 30 MINUTES LATER USING SAID METHOD. TOTAL STATION AND 3 POINT RESECTION WAS USED TO SET MONUMENTS THAT COULD NOT BE DIRECTLY SET BY GPS. KNOWN NETWORK POINTS IN THE ORIGINAL PROJECT NETWORK WERE CHECKED INTO AT THE BEGINNING AND END OF EACH GPS SESSION WHILE SETTING MONUMENTS. CONTROL POINTS 18, 19, 20, 21, AND ANNIE WERE INCORPORATED INTO THE CONTROL NETWORK PRIOR TO PROJECT CONSTRUCTION USING A TOTAL STATION.

**HORIZONTAL CONTROL EQUIPMENT**

A LEICA MS60 MULTI STATION WAS USED TO SET MONUMENTS NOT SET BY GPS. IT HAS THE FOLLOWING ACCURACY: STANDARD ANGULAR ERROR +/- 1 SECOND; STANDARD DISTANCE ERROR OF +/- 1MM, + 1.5 PPM.

A LEICA GS14 DUAL FREQUENCY GPS RECEIVER WAS USED FOR GPS OBSERVATIONS. IT HAS THE FOLLOWING ACCURACY: POST PROCESSED PHASED DIFFERENTIAL STATIC METHOD HORIZONTAL ERROR OF 3 MM + 0.5 PPM AND A VERTICAL ERROR OF 5 MM + 0.5 PPM; NETWORK REAL-TIME KINEMATIC (RTK) METHOD HORIZONTAL ERROR OF 8 MM + 0.5 PPM AND A VERTICAL ERROR OF 15 MM + 0.5 PPM.

**PLEASE NOTE:**

CONTROL MONUMENTS SHOWN ON THIS SURVEY DO NOT REPRESENT PROPERTY LINE OR RIGHT OF WAY LINES. THEY ARE INTENDED TO PERPETUATE THE ALIGNMENTS AND RIGHT OF WAY DEVELOPED FOR THIS PROJECT IN CONFORMANCE WITH ORS 209. SECTION 155. THIS SURVEY SHOWS THE MONUMENTATION OF NEW RIGHT OF WAY ACQUISITIONS AND IS NOT INTENDED TO RESOLVE THE EXISTING RIGHT OF WAY; FOR RESOLUTION OF THE EXISTING RIGHT OF WAY SEE FILED SURVEY ST. HWY. 138-015.

**SET R/W MONUMENTS ON SHEET 3**

PT. NO.	OCRS NORTHING	OCRS EASTING	ELEVATION	STATION	OFFSET (- IS LEFT)	DATE	DESCRIPTION	REFERENCE
4004	137621.336	160487.294	-	"WL"26+68.28	44.07	1/29/2018	SET 5/8" X 30" IRON REBAR WITH 2" ALUMINUM CAP STAMPED "ODOT RIGHT OF WAY" FLUSH WITH GROUND	-
4005	137598.126	160514.301	-	"WL"27+03.00	52.00	-	CALCULATED POINT - CLOSE TO TRACKS	-
4108	137597.862	160526.540	-	"WL"27+13.95	46.52	1/29/2018	SET 5/8" X 30" IRON REBAR WITH 2" ALUMINUM CAP STAMPED "ODOT RIGHT OF WAY" 0.1' BELOW GROUND	-
5000	137256.639	160515.143	-	"0"1+83.00	34.00	1/29/2018	SET 5/8" X 30" IRON REBAR WITH 2" ALUMINUM CAP STAMPED "ODOT RIGHT OF WAY" FLUSH WITH GROUND	-
5001	137264.155	160507.810	-	"PC"1578+89.56	54.00	1/29/2018	SET 5/8" X 30" IRON REBAR WITH 2" ALUMINUM CAP STAMPED "ODOT RIGHT OF WAY" FLUSH WITH GROUND	-
5003	137278.587	160506.997	-	"PC"1579+00.00	43.00	1/29/2018	SET 5/8" X 30" IRON REBAR WITH 2" ALUMINUM CAP STAMPED "ODOT RIGHT OF WAY" FLUSH WITH GROUND	-
5004	137286.964	160511.709	-	"PC"1579+10.00	40.00	1/29/2018	SET 5/8" X 30" IRON REBAR WITH 2" ALUMINUM CAP STAMPED "ODOT RIGHT OF WAY" 0.2' BELOW GROUND	-
5005	137335.886	160577.937	-	"PC"1580+00.00	40.00	1/29/2018	SET 5/8" X 30" IRON REBAR WITH 2" ALUMINUM CAP STAMPED "ODOT RIGHT OF WAY" FLUSH WITH GROUND	-
5006	137374.981	160630.869	-	"PC"1580+70.00	29.00	1/29/2018	SET 5/8" X 30" IRON REBAR WITH 2" ALUMINUM CAP STAMPED "ODOT RIGHT OF WAY" FLUSH WITH GROUND	-
5007	137388.403	160656.949	-	"PC"1581+00.00	26.00	1/29/2018	SET 5/8" X 30" IRON REBAR WITH 2" ALUMINUM CAP STAMPED "ODOT RIGHT OF WAY" 0.2' BELOW GROUND	-
5008	137398.632	160683.611	-	"PC"1581+28.56	26.00	1/29/2018	SET 5/8" X 30" IRON REBAR WITH 2" ALUMINUM CAP STAMPED "ODOT RIGHT OF WAY" 0.1' BELOW GROUND	-
5009	137449.421	160781.998	-	"PC"1582+33.77	26.00	1/29/2018	SET 5/8" X 30" IRON REBAR WITH 2" ALUMINUM CAP STAMPED "ODOT RIGHT OF WAY" 0.1' BELOW GROUND	-
5010	137448.184	160784.335	-	"1588+70.00	-51.00	1/29/2018	SET 2" ALUMINUM DISK STAMPED "ODOT RIGHT OF WAY" FLUSH WITH GROUND	-
5011	137335.056	160724.451	-	"1587+42.00	-51.00	1/29/2018	SET 5/8" X 30" IRON REBAR WITH 2" ALUMINUM CAP STAMPED "ODOT RIGHT OF WAY" FLUSH WITH GROUND	-
5012	137324.919	160717.953	-	"1587+30.00	-52.00	1/29/2018	SET 5/8" X 30" IRON REBAR WITH 2" ALUMINUM CAP STAMPED "ODOT RIGHT OF WAY" FLUSH WITH GROUND	-
5013	137289.566	160699.239	-	"1586+90.00	-52.00	1/29/2018	SET 5/8" X 28" IRON REBAR WITH 2" ALUMINUM CAP STAMPED "ODOT RIGHT OF WAY" FLUSH WITH GROUND	-
5014	137195.935	160666.647	-	"1585+92.00	-37.00	1/29/2018	SET 5/8" X 30" IRON REBAR WITH 2" ALUMINUM CAP STAMPED "ODOT RIGHT OF WAY" FLUSH WITH GROUND	-
5015	137187.403	160647.080	-	"0"0+34.00 "1585+75.31	34.00 -50.30	1/29/2018	SET 5/8" X 30" IRON REBAR WITH 2" ALUMINUM CAP STAMPED "ODOT RIGHT OF WAY" FLUSH WITH GROUND	-
5016	137317.576	160442.409	-	"PC"1578+80.63	-30.00	1/29/2018	SET 2" ALUMINUM DISK STAMPED "ODOT RIGHT OF WAY" FLUSH WITH GROUND	-
5017	137434.903	160621.814	-	"PC"1580+83.85	-30.00	1/29/2018	SET 5/8" X 30" IRON REBAR WITH 2" ALUMINUM CAP STAMPED "ODOT RIGHT OF WAY" FLUSH WITH GROUND	-
5018	137450.916	160663.551	-	"PC"1581+28.56	-30.00	1/29/2018	SET 5/8" X 30" IRON REBAR WITH 2" ALUMINUM CAP STAMPED "ODOT RIGHT OF WAY" FLUSH WITH GROUND	-
5019	137497.251	160752.783	-	"PC"1582+36.07 "WL"29+61.00	-30.00 30.00	1/29/2018	SET 5/8" X 30" IRON REBAR WITH 2" ALUMINUM CAP STAMPED "ODOT RIGHT OF WAY" FLUSH WITH ASPHALT CONCRETE	-
5020	137243.418	160378.930	-	"0"2+97.47	-41.00	1/29/2018	SET 5/8" X 30" IRON REBAR WITH 2" ALUMINUM CAP STAMPED "ODOT RIGHT OF WAY" 0.1' BELOW GROUND	-
5021	137247.250	160378.085	-	"0"3+00.00	-38.00	1/29/2018	SET 5/8" X 30" IRON REBAR WITH 2" ALUMINUM CAP STAMPED "ODOT RIGHT OF WAY" FLUSH WITH GROUND	-
5022	137262.233	160366.749	-	"0"3+17.00	-30.00	1/29/2018	SET 2" ALUMINUM DISK STAMPED "ODOT RIGHT OF WAY" FLUSH WITH GROUND	-
5023	137475.723	160922.242	-	"1589+58.86	58.00	1/29/2018	SET 2" ALUMINUM DISK STAMPED "ODOT RIGHT OF WAY" FLUSH WITH GROUND	-
5026	137619.034	160824.948	-	"1590+40.00	-95.04	1/29/2018	SET 2" ALUMINUM DISK STAMPED "ODOT RIGHT OF WAY" FLUSH WITH GROUND	-
5027	137658.582	160874.211	-	"1590+98.00	-70.00	1/29/2018	SET 5/8" X 30" IRON REBAR WITH 2" ALUMINUM CAP STAMPED "ODOT RIGHT OF WAY" FLUSH WITH GROUND	-
5057	137307.953	160408.747	-	"0"3+01.06 "PC"1578+52.91	30.00 -48.08	1/29/2018	SET 5/8" X 30" IRON REBAR WITH 2" ALUMINUM CAP STAMPED "ODOT RIGHT OF WAY" FLUSH WITH GROUND	-

**CONTROL MONUMENTS NOT SHOWN ON INDIVIDUAL SHEETS**

PT. NO.	OCRS NORTHING	OCRS EASTING	ELEVATION	STATION	OFFSET (- IS LEFT)	DATE	DESCRIPTION	REFERENCE
1	138534.804	163489.906	456.56	"DL"20+19.66	-35.23	4/18/2012	FD. 1" COPPER DISK STAMPED "ODOT CONTROL 1" FLUSH WITH CONCRETE SIDEWALK	ST. HWY. 138-015
4	139063.867	161604.223	464.24	"1606+83.36	40.46	4/18/2012	FD. 1" COPPER DISK STAMPED "ODOT CONTROL 4" FLUSH WITH CONCRETE SIDEWALK	ST. HWY. 138-015
5	139354.902	161610.403	474.91	"1609+67.89	39.27	4/18/2012	FD. 1" COPPER DISK STAMPED "ODOT CONTROL 5" FLUSH WITH CONCRETE SIDEWALK	ST. HWY. 138-015
6	139617.117	161576.523	488.61	"1612+26.10	42.45	4/25/2012	FD. 2-3/4" BRASS DISK STAMPED "STATE HIGHWAY DEPARTMENT REFERENCE RP POST 596.77 FT BACK OF PT" FLUSH IN CONCRETE CURB GOOD CONDITION	DRG 58-5-21A
7	140366.339	161275.639	535.09	"1620+26.54	36.46	4/18/2012	FD. 1" COPPER DISK STAMPED "ODOT CONTROL 7" FLUSH WITH CONCRETE SIDEWALK	ST. HWY. 138-015
17	140141.692	161756.820	505.23	-	-	4/18/2012	FD. 1" COPPER DISK STAMPED "ODOT CONTROL 17" FLUSH WITH CONCRETE SIDEWALK	ST. HWY. 138-015
20	138435.565	158680.865	462.22	-	-	2/11/2014	DESTROYED 1" COPPER DISK STAMPED "ODOT CONTROL 20" FLUSH WITH CONCRETE SIDEWALK	ST. HWY. 138-015
21	138750.008	158418.462	455.40	-	-	2/11/2014	DESTROYED 1" COPPER DISK STAMPED "ODOT CONTROL 21" FLUSH WITH CONCRETE SIDEWALK	ST. HWY. 138-015
500	137291.403	164405.554	-	-	-	4/5/2012	FD. MAG. NAIL AND WASHER STAMPED "ODOT 500" FLUSH IN CONCRETE WALK BETWEEN CEMETERY ENTRANCES	ST. HWY. 138-015
501	137105.290	164484.184	-	-	-	4/5/2012	FD. MAG. NAIL AND WASHER STAMPED "ODOT 501" FLUSH WITH AC. SURFACE ON CEMETERY DRIVE	ST. HWY. 138-015
502	137373.754	164779.281	-	-	-	4/5/2012	FD. MAG. NAIL AND WASHER STAMPED "ODOT 502" FLUSH IN SIDEWALK AT 1894 DOUGLAS STREET	ST. HWY. 138-015
503	136137.050	160990.532	-	-	-	4/5/2012	FD. MAG. NAIL AND WASHER STAMPED "ODOT 503" IN CRACK OF GUTTER AT INTERSECTIONS OF LANE AND MAIN STREETS	ST. HWY. 138-015
504	135588.036	160659.187	-	-	-	4/5/2012	FD. MAG. NAIL AND WASHER STAMPED "ODOT 504" FLUSH IN CONCRETE WALK ACROSS THE STREET FROM 953 MAIN STREET	ST. HWY. 138-015
505	135962.602	160842.265	-	-	-	4/5/2012	FD. MAG. NAIL AND WASHER STAMPED "ODOT 505" FLUSH IN AC. DRIVE	ST. HWY. 138-015
536	138598.312	159164.357	-	-	-	2/25/2014	FD. MAG. NAIL IN AC. ALLEY	ST. HWY. 138-015
537	138550.536	159604.648	-	-	-	2/25/2014	FD. MAG. NAIL AND WASHER IN AC. STAMPED "ODOT 537"	ST. HWY. 138-015
5002	138514.574	162813.936	451.59	"DL"13+46.13	33.16	3/30/2012	FD. 2-1/2" BRASS DISK STAMPING UNREADABLE FLUSH WITH CONCRETE WALK IN APPROACH TO MESSENGER'S AUTO BODY	CS 66/57
ANNIE	138576.963	158281.790	-	-	-	2/11/2014	FD. 3" DIA. BRASS DISK IN CONCRETE GORE BETWEEN NB ONRAMP & NB I-5 STAMPED "DOUGLAS COUNTY SURVEYORS OFFICE ANNIE 1982" GOOD CONDITION	DCSO CONTROL MON.
HILL	140324.974	160724.319	-	-	-	4/18/2012	FD. 1" COPPER DISK IN CONCRETE HATCHED UTILITY VAULT STAMPED "ODOT CONTROL HILL"	ST. HWY. 138-015
W8	138988.901	161850.432	453.78	-	-	4/18/2012	FD. 1" COPPER DISK STAMPED "ODOT CONTROL 8" FLUSH WITH CONCRETE SIDEWALK GOOD CONDITION	ST. HWY. 138-006
W9	139302.758	161865.223	463.15	-	-	4/18/2012	FD. 1" COPPER DISK STAMPED "ODOT CONTROL 9" FLUSH WITH CONCRETE SIDEWALK GOOD CONDITION	ST. HWY. 138-006

**RECOVERED MONUMENTS NOT SHOWN ON INDIVIDUAL SHEETS**

PT. NO.	OCRS NORTHING	OCRS EASTING	ELEVATION	STATION	OFFSET (- IS LEFT)	DATE	DESCRIPTION	REFERENCE
1166	138310.583	160808.183	-	-	-	4/26/2012	FD. 3-1/4" ALUMINUM DISK IN CONCRETE PEDISTAL STAMPED "SHANER ENGINEERING INC. PLS 430 2001 T27S R5W WM NMC DLC 39" 0.2 FT BELOW SURFACE GOOD CONDITION	MI37-16
1167	135602.625	160725.693	-	-	-	5/3/2012	FD. 3" BRASS DISK STAMPED "DOUGLAS COUNTY SURVEYORS OFFICE T27S R5W DLC 39 1999" FLUSH IN CONCRETE DRIVE AT 953 MAIN STREET	CS 66/8-1
1169	137345.900	164576.119	-	-	-	5/20/2012	FD. 2-1/2" O.D. IRON PIPE 0.2 FT BELOW AC. SURFACE NEAR CENTER OF DOUGLAS STREET DLC CORNER GOOD CONDITION NW DLC 40	W57-61
1170	138862.730	160355.368	-	-	-	10/3/2012	FD. 2-1/2" BRASS DISK STAMPED "DOUGLAS COUNTY SURVEYOR'S OFFICE 1966 T27S R6W S13/S24 R5W S18/S19 REF. 1987" FD. ATOP 1 1/2" OD. IRON PIPE BADLY BENT SOUTHERLY TIED 1.3 FT. BELOW SURFACE AT BEND	CS 67/33-45

OD. = OUTSIDE DIAMETER AC. = ASPHALT CONCRETE (TYPICAL ALL SHEETS)

REGISTERED PROFESSIONAL LAND SURVEYOR

*Marshall R. Wagstaff*

OREGON  
JANUARY 9, 2001  
MARSHALL R. WAGSTAFF  
49476

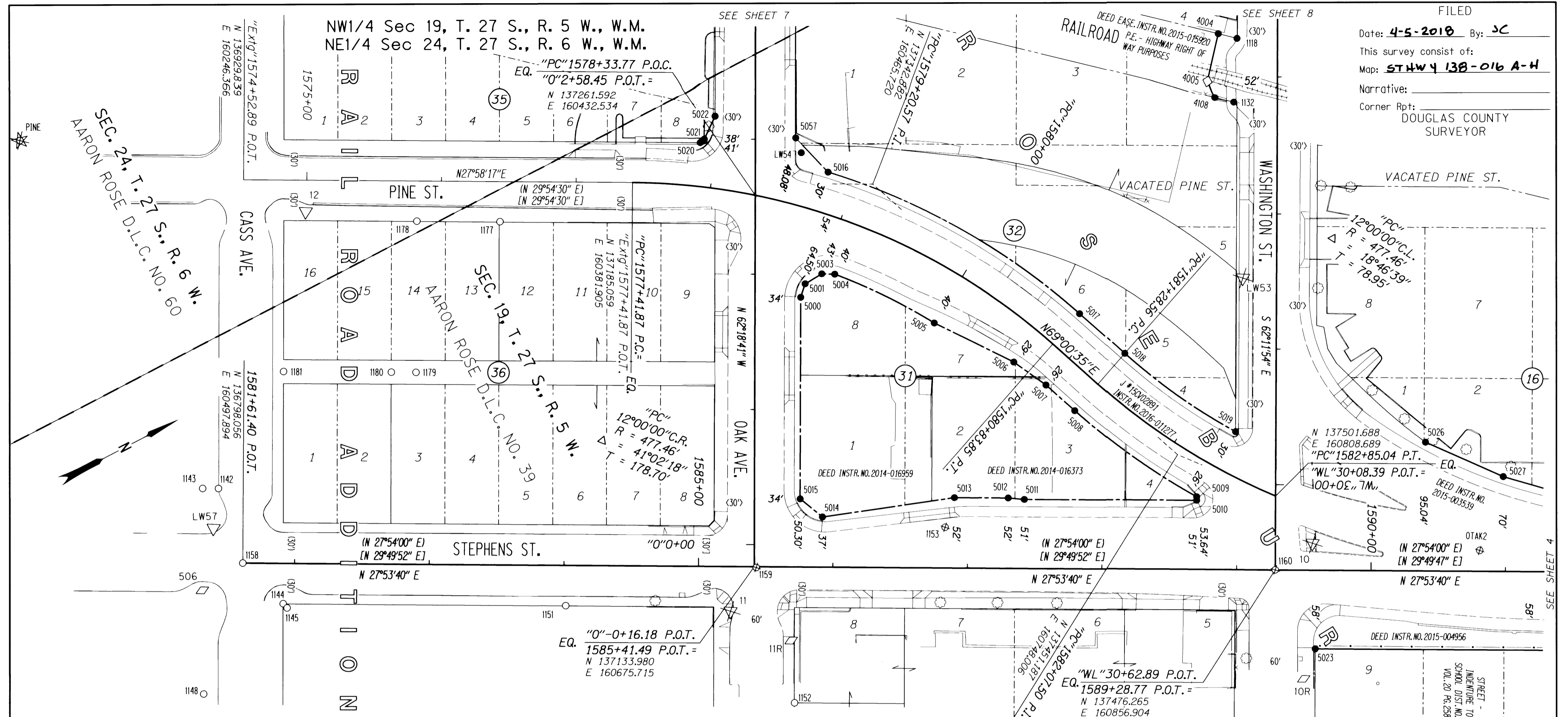
EXPIRES: 6/30/2018

**SI FEET**  
**OREGON DEPARTMENT OF TRANSPORTATION**  
RIGHT-OF-WAY BOUNDARY MONUMENTATION MAP  
FFO - OR 138E: CORRIDOR SOLUTIONS (ROSEBURG) SECTION  
NORTH UMPQUA HWY. NO. 138, OR138, M.P. -0.62 TO 0.57  
DOUGLAS COUNTY  
FILE: 13996RW.DGN :: RWM

FOR ODOT REGION 3 APRIL 4, 2018  
3500 NW. STEWART PKWY.  
ROSEBURG, OR. 97470 SHEET 2 OF 8

**ST HWY 138-016 B**

Date: 4-5-2018 By: JC  
This survey consist of:  
Map: STHWY 138-016 A-H  
Narrative:  
Corner Rpt: DOUGLAS COUNTY SURVEYOR



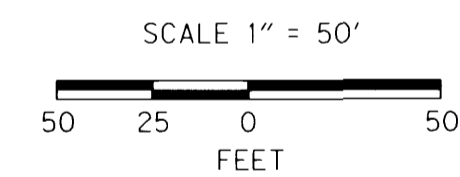
RECOVERED MONUMENTS

PT. NO.	OCRS	NORTHING	OCRS	EASTING	ELEVATION	STATION	OFFSET (- IS LEFT)	DATE	DESCRIPTION	REFERENCE
1132	137608.790	160536.056	-	"WL"27+17.27	-	32.42	1/31/2018	RESET 2" ALUMINUM DISK STAMPED "ODOT RESET" FLUSH WITH GROUND IN ORIGINAL POSITION	MI31-20	
1142	136807.499	160440.692	-	-	-	-	4/25/2012	FD. BRASS SCREW IN LEAD WOOL FLUSH IN TOP OF CONCRETE CURB GOOD CONDITION	MI34-24	
1143	136797.085	160435.213	-	-	-	-	4/25/2012	FD. BRASS SCREW IN LEAD WOOL FLUSH AT BACK OF SIDEWALK GOOD CONDITION	MI34-24	
1144	136810.749	160538.413	-	1581+91.57	-	29.87	4/26/2012	FD. 1-1/2" O.D. IRON PIPE FILLED WITH CONCRETE 0.1 FT. BELOW CONCRETE SIDEWALK GOOD CONDITION	M33-21	
1145	136811.918	160542.545	-	1581+94.54	-	32.98	4/26/2012	FD. 1-1/4" BRASS DISK SCRIBED WITH SCRIBED "X" IN 8" X 8" CONCRETE PEDESTAL 0.2 FT. BELOW SURFACE GOOD CONDITION	M33-21	
1148	136727.390	160570.454	-	-	-	-	4/25/2012	FD. SCRIBED "X" AT BACK OF CONCRETE SIDEWALK NEAR BLDG. CORNER	CS 11/34	
1151	136996.235	160636.640	-	1584+01.46	-	29.91	4/25/2012	FD. 3/4" IRON REBAR AT BACK OF CONCRETE SIDEWALK 0.1 FT. BELOW SURFACE GOOD CONDITION	MI40-69	
1152	137113.980	160778.886	-	-	-	-	4/3/2012	FD. 3/4" O.D. PIPE 0.2 FT. ABOVE SURFACE GOOD CONDITION	M25-26	
1153	137273.289	160715.520	-	1586+83.23	-	-30.00	4/3/2012	FD. 5/8" IRON ROD AT EDGE OF CONCRETE SIDE WALK TIED ON TOP OF WALK. 0.3 FT. BELOW SURFACE GOOD CONDITION	M21-26	
1158	136798.056	160497.894	-	1581+61.40	-	0.00	5/20/2012	FD. 2 3/4" BRASS DISK WITH PUNCH IN CENTER 0.75 FT BELOW PAVED SURFACE NO MONUMENT BOX AT INTERSECTION OF STEPHENS AND CASS STREETS GOOD CONDITION STA. 1581+61.4 FROM DRG 5B-5-21A	CS 18/30	
1159	137134.971	160676.993	-	1585+42.96	-	0.67	5/20/2012	DESTROYED 2" O.D. IRON PIPE 1.0' BELOW SURFACE NO MONUMENT BOX AT INTERSECTION OF OAK AND STEPHENS STREETS	CS 18/30	
1160	137476.265	160856.904	-	1589+28.77	-	0.00	5/10/2012	DESTROYED 2 3/4" BRASS DISK STAMPED "STATE HIGHWAY DEPARTMENT ELEVATION FEET X" IN A 10" DIAMETER MONUMENT BOX 0.65' BELOW A.C. SURFACE GOOD CONDITION AT INTERSECTION OF WASHINGTON AVE. AND STEPHENS STREET STA. 1589+27.7	DRG 5B-5-21A	
1177	137084.450	160362.095	-	"PI"1576+43.72	-	29.69	7/13/2015	FD. SCREW WITH 1 3/8" COPPER WASHER STAMPED "2295"	MI65-49	
1178	137029.848	160333.214	-	"PI"1575+81.95	-	29.80	7/13/2015	FD. PK NAIL WITH WASHER STAMPED "LS 52989"	MI67-66	
1179	136977.495	160432.235	-	-	-	-	7/13/2015	FD. PK NAIL WITH WASHER STAMPED "LS 52989"	MI67-66	
1180	136961.319	160423.677	-	-	-	-	7/13/2015	FD. SCREW WITH 1 3/8" COPPER WASHER STAMPED "2295"	MI65-49	
1181	136890.471	160386.187	-	-	-	-	7/13/2015	FD. SCREW WITH 1 3/8" COPPER WASHER STAMPED "2295"	MI65-49	
OTAK2	137617.817	160914.492	-	1590+80.82	-	-15.33	5/10/2012	DESTROYED PK NAIL AND WASHER STAMPED "OTAK CONTROL 2" FLUSH IN CONCRETE SURFACE	MI34-24	

CONTROL MONUMENTS

PT. NO.	OCRS	NORTHING	OCRS	EASTING	ELEVATION	STATION	OFFSET (- IS LEFT)	DATE	DESCRIPTION	REFERENCE
10	137509.937	160852.285	469.45	1589+56.37	-	-19.84	4/18/2012	DESTROYED 1" COPPER DISK STAMPED "ODOT CONTROL 10" FLUSH WITH CONCRETE SIDEWALK	ST. HWY. 138-015	
10R	137457.897	160937.973	474.37	1589+50.46	-	80.24	7/13/2015	FD. 1" COPPER DISK STAMPED "ODOT CONTROL 10R" FLUSH WITH CONCRETE SIDEWALK TIED USING 3 POINT RESECTION	ST. HWY. 138-015	
11	137103.041	160696.825	475.35	1585+24.02	-	33.13	4/18/2012	DESTROYED 1" COPPER DISK STAMPED "ODOT CONTROL 11" FLUSH WITH CONCRETE SIDEWALK	ST. HWY. 138-015	
11R	137133.056	160736.897	475.58	1585+69.29	-	54.51	7/13/2015	FD. 1" COPPER DISK STAMPED "ODOT CONTROL 11R" FLUSH WITH CONCRETE SIDEWALK TIED USING 3 POINT RESECTION	ST. HWY. 138-015	
12	136959.918	160288.672	473.01	"PI"1574+99.30	-	23.26	4/19/2012	FD. 1" COPPER DISK STAMPED "ODOT CONTROL 12" FLUSH WITH CONCRETE SIDEWALK	ST. HWY. 138-015	
506	136762.105	160501.895	-	-	-	-	4/26/2012	FD. MAG. NAIL AND WASHER STAMPED "ODOT 506"	ST. HWY. 138-015	
LW53	137554.522	160654.652	464.35	"WL"28+47.49	-	25.11	4/19/2012	DESTROYED 1-1/2" BRASS CAP STAMPED "ODOT CONTROL 53" FLUSH WITH CONCRETE SIDEWALK GOOD CONDITION	ST. HWY. 99-004	
LW54	137306.516	160420.441	467.70	"O"2+90.03	-	34.16	4/19/2012	RESET 2" ALUMINUM DISK STAMPED "ODOT RESET" FLUSH WITH GROUND IN ORIGINAL POSITION USING RTK GPS	ST. HWY. 99-004	
LW57	136790.620	160465.052	481.54	-	-	-	4/19/2012	FD. 1-1/2" BRASS CAP STAMPED "ODOT CONTROL 57" FLUSH WITH CONCRETE SIDEWALK GOOD CONDITION	ST. HWY. 99-004	
PINE	136795.903	160143.691	471.69	-	-	-	4/19/2012	DESTROYED 1" COPPER DISK STAMPED "ODOT CONTROL PINE" IN CONCRETE SIDEWALK	ST. HWY. 138-015	

FOR SET R/W POINTS SEE TABLE SHEET 2



P.E. = PERMANENT EASEMENT

POINT LEGEND

- SET R/W MONUMENT
- FOUND MONUMENT
- ⊗ DESTROYED MONUMENT
- ⊗ DESTROYED GPS STATION
- △ FOUND NETWORK POINT
- ⊗ DESTROYED NETWORK POINT
- ◇ FOUND STRATEGIC POINT
- CALCULATED POINT

FOR MONUMENTS NOT SHOWN ON INDIVIDUAL SHEETS SEE SHEETS 1 AND 2

FOR LINE LEGEND SEE SHEET 1

REGISTERED PROFESSIONAL LAND SURVEYOR  
*Marshall R. Wagstaff*  
OREGON  
JANUARY 9, 2001  
MARSHALL R. WAGSTAFF  
49476  
EXPIRES: 6/30/2018

RECORD DATA

( )	ODOT R/W DRG. 5B-5-21A
[ ]	ODOT R/W DRG. 10B-14-16
< >	ORIGINAL PLAT
NO BRACKET	MEASURED/RESOLVED SUPERCEDES RECORD

SI FEET  
**T** OREGON DEPARTMENT OF TRANSPORTATION  
RIGHT-OF-WAY BOUNDARY MONUMENTATION MAP  
FFO - OR 138E: CORRIDOR SOLUTIONS (ROSEBURG) SECTION  
NORTH UMPQUA HWY. NO. 138, OR138, M.P. -.62 TO 0.57  
DOUGLAS COUNTY  
FILE: 13996RW.DGN :: RWM

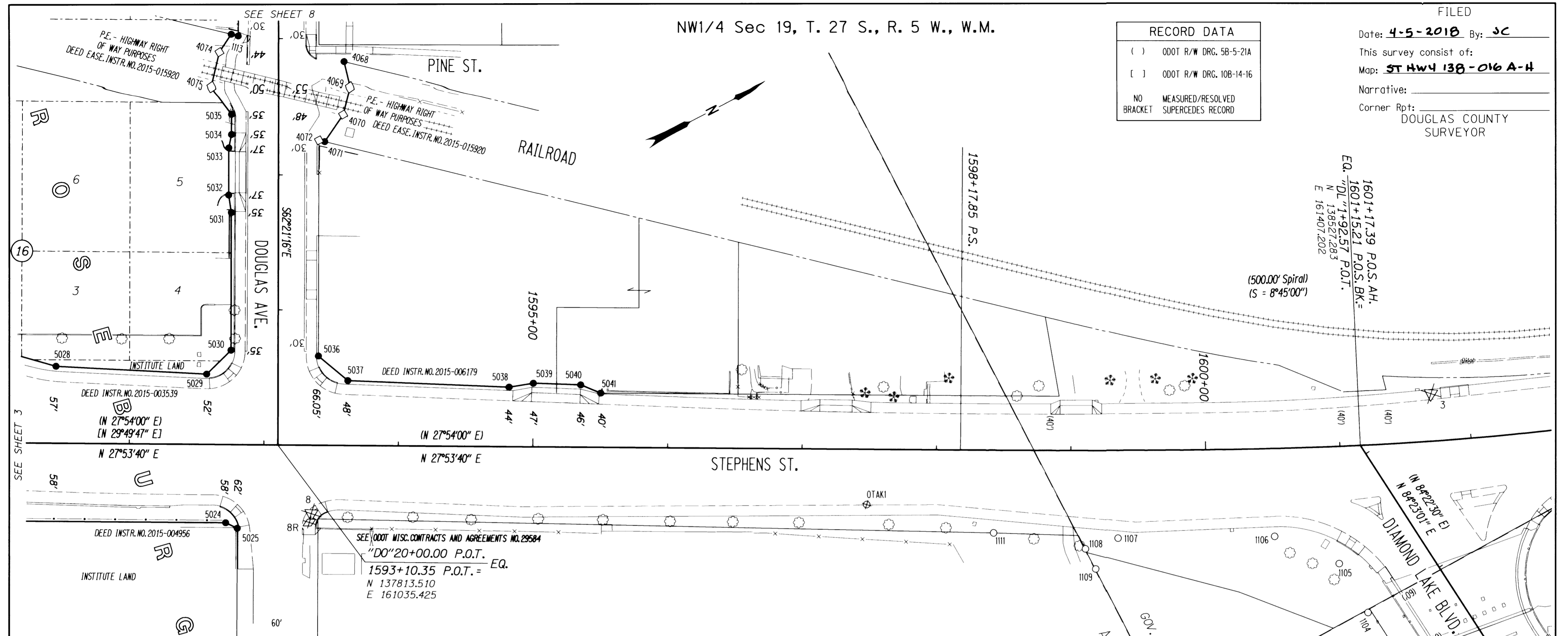
FOR ODOT REGION 3  
3500 NW. STEWART PKWY.  
ROSEBURG, OR. 97470  
APRIL 4, 2018  
SCALE: 1" = 50'  
SHEET 3 OF 8

ST HWY 138-016 C.

NW1/4 Sec 19, T. 27 S., R. 5 W., W.M.

RECORD DATA	
( )	ODOT R/W DRG. 5B-5-21A
[ ]	ODOT R/W DRG. 10B-14-16
NO BRACKET	MEASURED/RESOLVED SUPERCEDES RECORD

FILED  
Date: **4-5-2018** By: **JC**  
This survey consist of:  
Map: **ST HWY 138-016 A-H**  
Narrative:  
Corner Rpt: **DOUGLAS COUNTY SURVEYOR**



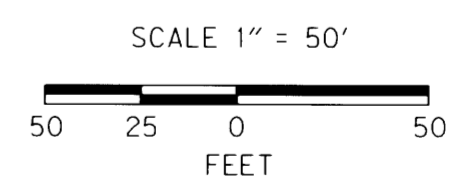
PT. NO.	OCRS	NORTHING	OCRS	EASTING	ELEVATION	STATION	OFFSET (- IS LEFT)	DATE	DESCRIPTION	REFERENCE
1099	138416.291	161614.434	-	-	-	-	-	4/25/2012	FD. 5/8" IRON REBAR BENT S.E. TIED WHERE ENTERS GROUND FLUSH WITH SURFACE FAIR CONDITION	M52-33
1104	138475.493	161519.329	-	-	-	"DL"2+99.08	62.52	4/2/2012	FD. 5/8" IRON ROD WITH 1" O.D. PIPE OVERTOP. PIPE EXTENDS 2.0 FT ABOVE SURFACE TIED ALONGSIDE PIPE GOOD CONDITION	M40-60
1105	138473.103	161477.420	-	-	-	"DL"2+57.14	60.79	4/2/2012	FD. 5/8" IRON ROD BENT SOUTH 0.4 FT BELOW SURFACE TIED WHERE ROD ENTERS GROUND POOR CONDITION	M40-60
1106	138439.739	161437.414	-	-	-	1600+49.78	64.88	4/2/2012	FD. 5/8" IRON ROD BENT EASTERLY 0.5 FT BELOW SURFACE TIED WHERE ROD ENTERS GROUND POOR CONDITION	M40-60
1107	138335.734	161384.947	-	-	-	1599+34.88	64.92	4/2/2012	FD. 5/8" IRON ROD BENT EASTERLY 0.5 FT BELOW SURFACE TIED WHERE ROD ENTERS GROUND POOR CONDITION	M40-60
1108	138310.864	161380.647	-	-	-	1599+11.04	72.59	4/2/2012	FD. 5/8" IRON ROD BENT S.E. 0.6 FT BELOW SURFACE TIED WHERE ROD ENTERS GROUND POOR CONDITION	M40-60
1109	138310.757	161397.390	-	-	-	1599+18.62	87.48	4/2/2012	FD. 5/8" IRON ROD BENT SOUTHERLY 0.6 FT BELOW SURFACE TIED WHERE ROD ENTERS GROUND POOR CONDITION	M40-60
1110	138310.540	161495.747	-	-	-	-	-	4/2/2012	FD. 1-1/4" YELLOW PLASTIC CAP STAMPED "HIBBS LS 52989" 0.1 FT BELOW SURFACE GOOD CONDITION	VOL. 23, PG. 10A
1111	138255.651	161338.653	-	-	-	1598+42.96	61.15	4/2/2012	FD. 1-1/4" YELLOW PLASTIC CAP STAMPED "HIBBS LS 52989" 1.0 FT BELOW SURFACE GOOD CONDITION	VOL. 23, PG. 10A
1113	137927.068	160754.008	-	-	-	-	-	1/31/2018	RESET 2" ALUMINUM DISK STAMPED "ODOT RESET" FLUSH WITH GROUND IN ORIGINAL POSITION	M146-14B
OTAK1	138181.511	161276.594	-	-	-	1597+48.42	40.98	4/3/2012	DESTROYED PK NAIL AND WASHER STAMPED "OTAK CONTROL 1" FLUSH IN CONCRETE SIDEWALK GOOD CONDITION	M134-24

PT. NO.	OCRS	NORTHING	OCRS	EASTING	ELEVATION	STATION	OFFSET (- IS LEFT)	DATE	DESCRIPTION	REFERENCE
3	138591.467	161397.715	455.35	1601+72.45	-	-	-34.96	4/18/2012	DESTROYED 1" COPPER DISK STAMPED "ODOT CONTROL 3" FLUSH WITH CONCRETE SIDEWALK	ST. HWY. 138-015
8	137812.079	161092.096	465.16	1593+35.60	-	-	50.76	4/18/2012	DESTROYED 1" COPPER DISK STAMPED "ODOT CONTROL 8" FLUSH WITH CONCRETE SIDEWALK	ST. HWY. 138-015
8R	137807.834	161097.270	465.34	1593+34.27	-	-	57.32	7/13/2015	DESTROYED 1" COPPER DISK STAMPED "ODOT CONTROL 8R" FLUSH WITH CONCRETE SIDEWALK TIED USING 3 POINT RESECTION	ST. HWY. 138-015
WS	138511.532	161633.969	452.87	"DL"4+16.70	-	-	37.87	4/2/2012	FD. 1" COPPER DISK STAMPED "ODOT CONTROL 5" FLUSH WITH CONCRETE SIDEWALK GOOD CONDITION	ST. HWY. 138-006

PT. NO.	OCRS	NORTHING	OCRS	EASTING	ELEVATION	STATION	OFFSET (- IS LEFT)	DATE	DESCRIPTION	REFERENCE
4071	137948.228	160852.156	-	-	-	"DO"17+75.14	-34.30	1/29/2018	SET 5/8" X 30" IRON REBAR WITH 2" ALUMINUM CAP STAMPED "ODOT RIGHT OF WAY" FLUSH WITH GROUND	-
4072	137944.896	160849.246	-	-	-	"DO"17+74.11	-30.00	-	CALCULATED POINT	-
5024	137752.481	161068.744	-	-	-	1592+72.00	58.00	1/31/2018	SET 2" ALUMINUM DISK STAMPED "ODOT RIGHT OF WAY" FLUSH WITH GROUND	-
5025	137758.227	161076.311	-	-	-	1592+80.62	62.00	1/31/2018	SET 2" ALUMINUM DISK STAMPED "ODOT RIGHT OF WAY" FLUSH WITH GROUND	-
5028	137694.039	160907.689	-	-	-	1591+45.00	-57.00	1/29/2018	SET 5/8" X 30" IRON REBAR WITH 2" ALUMINUM CAP STAMPED "ODOT RIGHT OF WAY" FLUSH WITH GROUND	-
5029	137790.687	160964.507	-	-	-	1592+57.00	-52.00	1/29/2018	SET 5/8" X 30" IRON REBAR WITH 2" ALUMINUM CAP STAMPED "ODOT RIGHT OF WAY" FLUSH WITH GROUND	-
5030	137814.986	160957.176	-	-	-	"DO"19+30.00	35.00	1/29/2018	SET 5/8" X 26" IRON REBAR WITH 2" ALUMINUM CAP STAMPED "ODOT RIGHT OF WAY" FLUSH WITH GROUND	-
5031	137862.314	160866.821	-	-	-	"DO"18+28.00	35.00	1/29/2018	SET 5/8" X 30" IRON REBAR WITH 2" ALUMINUM CAP STAMPED "ODOT RIGHT OF WAY" FLUSH WITH GROUND	-
5032	137866.574	160854.377	-	-	-	"DO"18+15.00	37.00	1/29/2018	SET 5/8" X 30" IRON REBAR WITH 2" ALUMINUM CAP STAMPED "ODOT RIGHT OF WAY" FLUSH WITH GROUND	-
5033	137882.814	160823.373	-	-	-	"DO"17+80.00	37.00	1/29/2018	SET 5/8" X 30" IRON REBAR WITH 2" ALUMINUM CAP STAMPED "ODOT RIGHT OF WAY" FLUSH WITH GROUND	-
5034	137889.225	160815.442	-	-	-	"DO"17+70.00	35.00	1/29/2018	SET 5/8" X 30" IRON REBAR WITH 2" ALUMINUM CAP STAMPED "ODOT RIGHT OF WAY" FLUSH WITH GROUND	-
5035	137896.185	160802.155	-	-	-	"DO"17+55.00	35.00	1/29/2018	SET 5/8" X 30" IRON REBAR WITH 2" ALUMINUM CAP STAMPED "ODOT RIGHT OF WAY" FLUSH WITH GROUND	-
5036	137870.670	160990.954	-	-	-	"DO"19+34.08	-30.00	1/29/2018	SET 5/8" X 30" IRON REBAR WITH 2" ALUMINUM CAP STAMPED "ODOT RIGHT OF WAY" FLUSH WITH GROUND	-
5037	137881.615	161017.166	-	-	-	1593+62.00	-48.00	1/29/2018	SET 5/8" X 30" IRON REBAR WITH 2" ALUMINUM CAP STAMPED "ODOT RIGHT OF WAY" FLUSH WITH GROUND	-
5038	137985.801	161076.843	-	-	-	1594+82.00	-44.00	1/29/2018	SET 5/8" X 30" IRON REBAR WITH 2" ALUMINUM CAP STAMPED "ODOT RIGHT OF WAY" FLUSH WITH GROUND	-
5039	138003.113	161082.612	-	-	-	1595+00.00	-47.00	1/29/2018	SET 5/8" X 30" IRON REBAR WITH 2" ALUMINUM CAP STAMPED "ODOT RIGHT OF WAY" FLUSH WITH GROUND	-
5040	138033.579	161099.871	-	-	-	1595+35.00	-46.00	1/29/2018	SET 5/8" X 30" IRON REBAR WITH 2" ALUMINUM CAP STAMPED "ODOT RIGHT OF WAY" FLUSH WITH GROUND	-
5041	138044.029	161112.191	-	-	-	1595+50.00	-40.00	1/29/2018	SET 5/8" X 30" IRON REBAR WITH 2" ALUMINUM CAP STAMPED "ODOT RIGHT OF WAY" FLUSH WITH GROUND	-

P.E. = PERMANENT EASEMENT

POINT LEGEND	
●	SET R/W MONUMENT
○	FOUND MONUMENT
⊗	DESTROYED MONUMENT
△	FOUND NETWORK POINT
⊗	DESTROYED NETWORK POINT
⊗	DESTROYED STRATEGIC POINT
□	CALCULATED POINT
FOR MONUMENTS NOT SHOWN ON INDIVIDUAL SHEETS SEE SHEETS 1 AND 2	
FOR LINE LEGEND SEE SHEET 1	

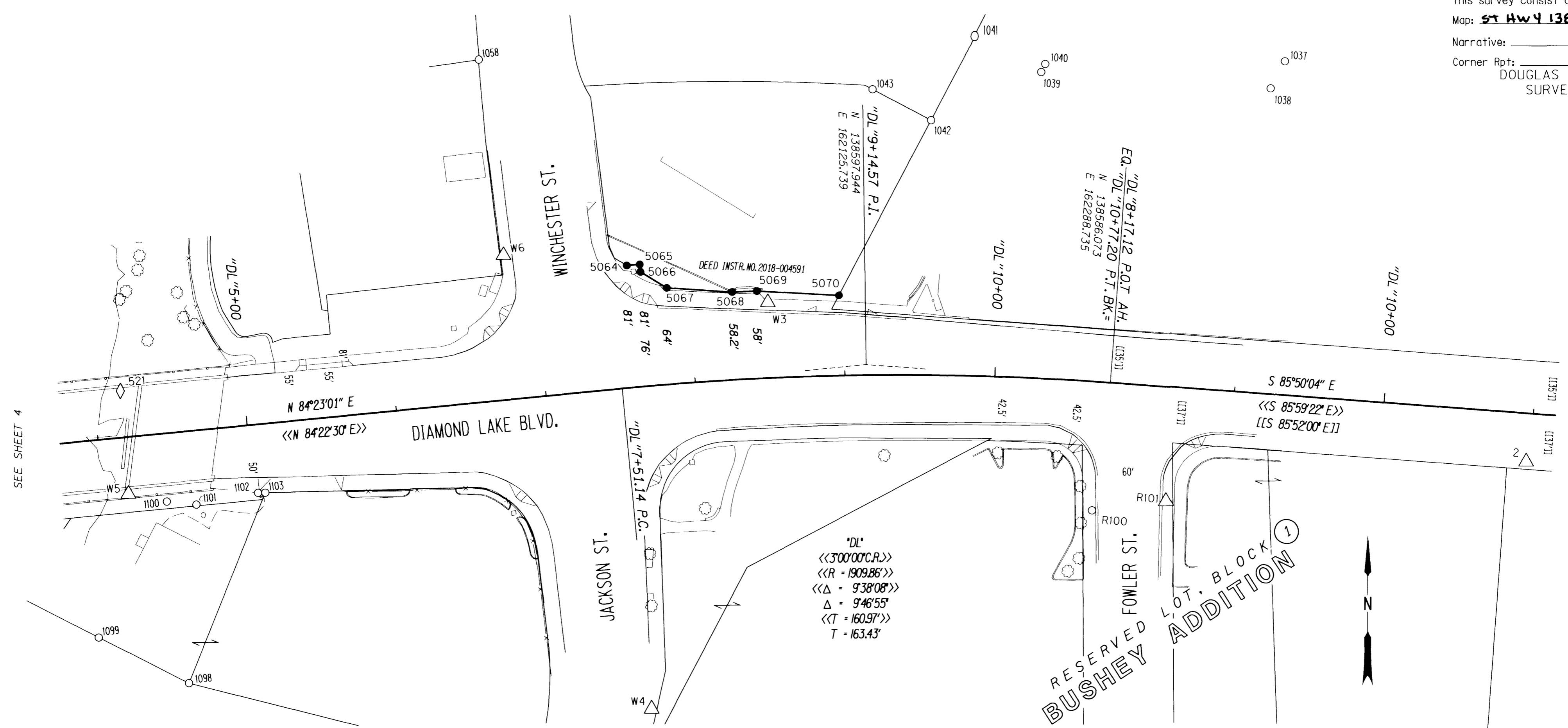


REGISTERED PROFESSIONAL LAND SURVEYOR

*Marshall R. Wagstaff*  
OREGON  
JANUARY 9, 2001  
MARSHALL R. WAGSTAFF  
49476  
EXPIRES: 6/30/2018

**SI FEET**  
**OREGON DEPARTMENT OF TRANSPORTATION**  
RIGHT-OF-WAY BOUNDARY MONUMENTATION MAP  
FFO - OR 138E: CORRIDOR SOLUTIONS (ROSEBURG) SECTION  
NORTH UMPQUA HWY. NO. 138, OR138, M.P. -.062 TO 0.57  
DOUGLAS COUNTY  
FILE: 13996RW.DGN :: RWM  
FOR ODOT REGION 3  
3500 NW STEWART PKWY.  
ROSEBURG, OR. 97470  
APRIL 4, 2018  
SCALE: 1" = 50'  
SHEET 4 OF 8

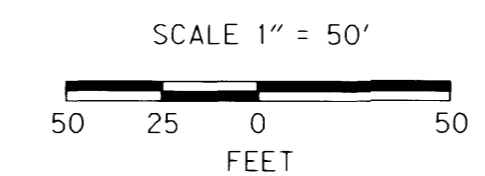
**ST HWY 138-016 D**



PT. NO.	OCRS	NORTHING	OCRS EASTING	ELEVATION	STATION	OFFSET (- IS LEFT)	DATE	DESCRIPTION	REFERENCE
1037	138799.322	162404.910	-	-	-	-	3/30/2012	FD. 1-1/4" YELLOW PLASTIC CAP STAMPED "I.E. ENG" FLUSH WITH SURFACE GOOD CONDITION	M131-48
1038	138781.309	162395.462	-	-	-	-	3/30/2012	FD. 1-1/4" YELLOW PLASTIC CAP STAMPED "I.E. ENG" 0.05 FT ABOVE SURFACE GOOD CONDITION	M131-48
1039	138792.357	162242.493	-	-	-	-	3/30/2012	FD. 1-1/4" YELLOW PLASTIC CAP STAMPED "I.E. ENG" 0.4 FT BELOW SURFACE GOOD CONDITION	M131-48
1040	138797.783	162245.134	-	-	-	-	3/30/2012	FD. 5/8" IRON REBAR 0.8 FT BELOW SURFACE GOOD CONDITION	M58-53
1041	138815.673	162198.229	-	-	-	-	4/24/2012	FD. 1-1/4" YELLOW PLASTIC CAP STAMPED "I.E. ENG" FLUSH WITH SURFACE GOOD CONDITION	M131-48
1042	138760.235	162168.992	-	-	-	-	3/30/2012	FD. 1-1/4" YELLOW PLASTIC CAP STAMPING UNREADABLE FLUSH WITH A.C GOOD CONDITION	M131-48
1043	138780.801	162130.074	-	-	-	-	4/24/2012	FD. 1 1/4" YELLOW PLASTIC CAP STAMPED "I.E. ENG" FLUSH WITH SURFACE GOOD CONDITION	M131-48
1058	138800.501	161867.539	-	-	-	-	-	FD. 1-1/4" YELLOW PLASTIC CAP STAMPED "I.E. ENGINEERING" FLUSH WITH SURFACE GOOD CONDITION	M142-49
1098	138386.074	161674.583	-	-	-	-	4/26/2012	FD. 5/8" IRON REBAR 0.4 FT BELOW SURFACE GOOD CONDITION	M52-33
1100	138506.624	161659.628	-	"DL"4+41.76	45.26	-	4/25/2012	FD. 3/4" IRON ROD BENT BADLY WEST TIED WHERE ROD ENTERS GROUND 1.0 FT BELOW SURFACE POOR CONDITION	M23-21
1101	138504.574	161679.343	-	"DL"4+61.18	49.23	-	4/25/2012	FD. 3/4" IRON ROD BENT BADLY NORTH TIED WHERE ROD ENTERS GROUND 0.5 FT BELOW SURFACE POOR CONDITION	M52-33
1102	138512.510	161720.421	-	"DL"5+02.83	45.36	-	4/25/2012	FD. 5/8" IRON REBAR FLUSH WITH SURFACE GOOD CONDITION AT BACK OF CONCRETE WALK	M52-33
1103	138512.654	161725.232	-	"DL"5+07.64	45.68	-	4/25/2012	FD. 5/8" IRON REBAR FLUSH WITH SURFACE GOOD CONDITION AT BACK OF CONCRETE WALK	M52-33
R100	138501.533	162276.423	-	"DL"10+70.78	85.20	-	4/26/2012	FD. 1" COPPER DISK STAMPED "ODOT CONTROL 100" FLUSH IN CONCRETE SIDEWALK GOOD CONDITION	ST. HWY. 138-008

PT. NO.	OCRS	NORTHING	OCRS EASTING	ELEVATION	STATION	OFFSET (- IS LEFT)	DATE	DESCRIPTION	REFERENCE
2	138533.725	162566.025	450.05	-	"DL"10+97.48	32.07	4/18/2012	FD. 1" COPPER DISK STAMPED "ODOT CONTROL 2" FLUSH WITH CONCRETE SIDEWALK	ST. HWY. 138-015
521	138580.062	161628.617	-	-	"DL"4+18.08	-30.86	6/11/2012	FD. 1" COPPER DISK STAMPED "ODOT CONTROL 521" IN CONC. SLAB	ST. HWY. 138-015
R101	138507.534	162325.737	448.61	-	"DL"8+59.73	75.64	4/18/2012	FD. 1" COPPER DISK STAMPED "ODOT CONTROL 101" FLUSH WITH CONCRETE SIDEWALK GOOD CONDITION	ST. HWY. 138-008
W3	138639.127	162060.224	449.08	-	"DL"8+50.83	-50.07	3/30/2012	FD. 1" COPPER DISK STAMPED "ODOT CONTROL 3" FLUSH WITH CONCRETE SIDEWALK GOOD CONDITION	ST. HWY. 138-006
W4	138369.678	161982.898	449.04	-	-	-	4/18/2012	FD. 1" COPPER DISK STAMPED "ODOT CONTROL 4" FLUSH WITH CONCRETE SIDEWALK GOOD CONDITION	ST. HWY. 138-006
W6	138670.390	161884.076	448.86	-	"DL"6+81.15	-95.75	4/2/2012	FD. 1" COPPER DISK STAMPED "ODOT CONTROL 6" FLUSH WITH CONCRETE SIDEWALK GOOD CONDITION	ST. HWY. 138-006

PT. NO.	OCRS	NORTHING	OCRS EASTING	ELEVATION	STATION	OFFSET (- IS LEFT)	DATE	DESCRIPTION	REFERENCE
5064	138663.607	161966.118	-	-	"DL"7+61.69	-81.00	1/30/2018	SET 5/8" X 30" IRON REBAR WITH 2" ALUMINUM CAP STAMPED "ODOT RIGHT OF WAY" FLUSH WITH GROUND	-
5065	138664.388	161974.743	-	-	"DL"7+70.00	-81.00	1/30/2018	SET 5/8" X 30" IRON REBAR WITH 2" ALUMINUM CAP STAMPED "ODOT RIGHT OF WAY" FLUSH WITH GROUND	-
5066	138659.408	161975.184	-	-	"DL"7+70.00	-76.00	1/30/2018	SET 5/8" X 30" IRON REBAR WITH 2" ALUMINUM CAP STAMPED "ODOT RIGHT OF WAY" FLUSH WITH GROUND	-
5067	138648.841	161992.718	-	-	"DL"7+86.00	-64.00	1/30/2018	SET 5/8" X 30" IRON REBAR WITH 2" ALUMINUM CAP STAMPED "ODOT RIGHT OF WAY" 0.1' ABOVE GROUND IN BUSH	-
5068	138646.034	162036.357	-	-	"DL"8+28.00	-58.20	1/30/2018	SET 2" ALUMINUM DISK STAMPED "ODOT RIGHT OF WAY" FLUSH WITH CURB	-
5069	138646.717	162052.830	-	-	"DL"8+44.00	-58.00	1/30/2018	SET 5/8" X 30" IRON REBAR WITH 2" ALUMINUM CAP STAMPED "ODOT RIGHT OF WAY" FLUSH WITH GROUND	-
5070	138643.878	162107.586	-	-	"DL"8+97.08	-53.22	1/30/2018	SET 5/8" X 30" IRON REBAR WITH 2" ALUMINUM CAP STAMPED "ODOT RIGHT OF WAY" FLUSH WITH GROUND	-



**POINT LEGEND**

- SET R/W MONUMENT
- FOUND MONUMENT
- △ FOUND NETWORK POINT
- ◇ FOUND STRATEGIC POINT

FOR MONUMENTS NOT SHOWN ON INDIVIDUAL SHEETS SEE SHEETS 1 AND 2

FOR LINE LEGEND SEE SHEET 1

RECORD DATA	
[[ ]]	ODOT R/W DRG. 6B-21-13
<< >>	COUNTY ROAD PLAN: SC09 1969-008
NO BRACKET	MEASURED/RESOLVED SUPERCEDES RECORD

REGISTERED PROFESSIONAL LAND SURVEYOR

*Marshall R Wagstaff*

OREGON  
JANUARY 9, 2001  
MARSHALL R. WAGSTAFF  
49476  
EXPIRES: 6/30/2018

**SI FEET**

**OREGON DEPARTMENT OF TRANSPORTATION**

RIGHT-OF-WAY BOUNDARY MONUMENTATION MAP

FFO - OR 138E: CORRIDOR SOLUTIONS (ROSEBURG) SECTION

NORTH UMPQUA HWY. NO. 138, OR138, M.P. -0.62 TO 0.57

DOUGLAS COUNTY

FILE: 13996RW.DGN :: RWM

FOR ODOT REGION 3 APRIL 4, 2018

3500 NW. STEWART PKWY. SCALE: 1" = 50'

ROSEBURG, OR. 97470 SHEET 5 OF 8

NE1/4 Sec 24, T. 27 S., R. 6 W., W.M.

FILED

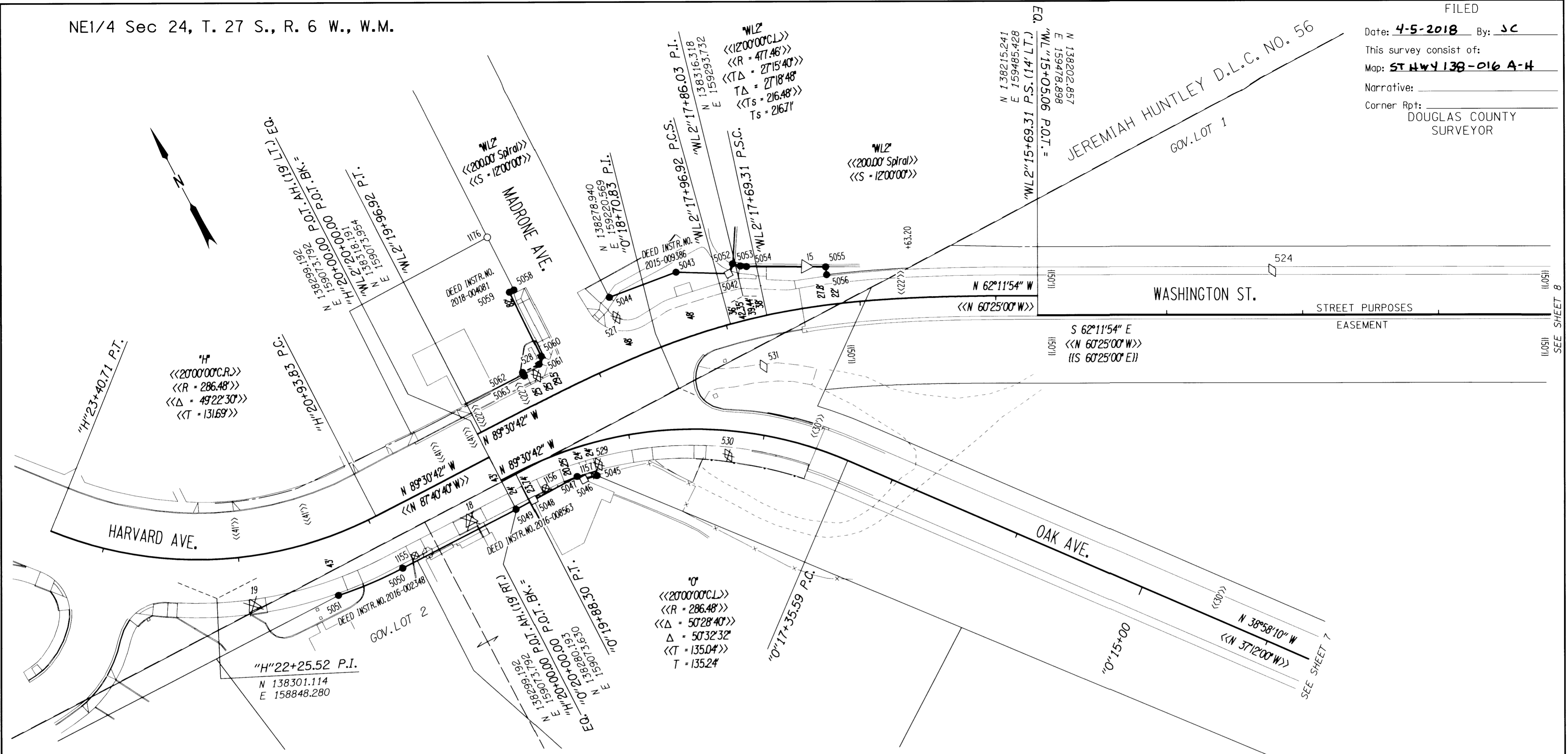
Date: 4-5-2018 By: JC

This survey consist of:

Map: ST HWY 138-016 A-H

Narrative:

Corner Rpt: DOUGLAS COUNTY SURVEYOR



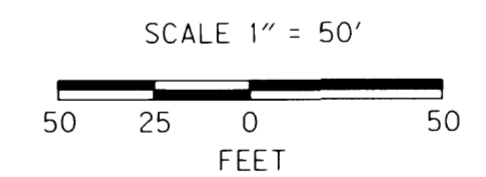
RECOVERED MONUMENTS								
PT. NO.	OCRS NORTHING	OCRS EASTING	ELEVATION	STATION	OFFSET (- IS LEFT)	DATE	DESCRIPTION	REFERENCE
1155	138260.890	158991.739	-	"H"20+81.72	-39.00	4/26/2012	DESTROYED 5/8" IRON ROD FLUSH WITH SURFACE GOOD CONDITION	M68-14
1156	138259.970	159099.667	-	"O"19+72.72	-19.61	4/26/2012	DESTROYED 1 1/4" YELLOW PLASTIC CAP STAMPED "AA SURVEYING" 0.2 FT ABOVE SURFACE GOOD CONDITION	M144-7
1157	138251.625	159136.389	-	"O"19+32.17	-22.99	4/26/2012	DESTROYED 1 1/4" YELLOW PLASTIC CAP STAMPED "AA SURVEYING" 0.4 FT ABOVE SURFACE GOOD CONDITION	M144-7
1176	138442.288	159147.893	-	-	-	2/25/2014	FD. 3/4" IRON ROD AT BACK SIDEWALK 0.5' BELOW SURFACE GOOD CONDITION	M45-32

CONTROL MONUMENTS								
PT. NO.	OCRS NORTHING	OCRS EASTING	ELEVATION	STATION	OFFSET (- IS LEFT)	DATE	DESCRIPTION	REFERENCE
15	138313.963	159344.614	457.62	-	-	4/18/2012	FD. 1" COPPER DISK STAMPED "ODOT CONTROL 15" FLUSH WITH CONCRETE CURB	ST. HWY. 138-015
18	138264.533	159039.672	465.28	"H"20+33.82	-34.95	2/11/2014	DESTROYED 1" COPPER DISK STAMPED "ODOT CONTROL 18" FLUSH WITH CONCRETE SIDEWALK	ST. HWY. 138-015
19	138283.653	158869.437	466.93	"H"21+93.68	-36.72	2/11/2014	DESTROYED 1" COPPER DISK STAMPED "ODOT CONTROL 19" FLUSH WITH CONCRETE SIDEWALK	ST. HWY. 138-015
524	138150.899	159646.609	-	"W"16+77.65	-32.26	10/3/2012	FD. 1" COPPER DISK STAMPED "ODOT CONTROL 524" IN CONC. WALK	ST. HWY. 138-015
527	138345.997	159204.174	461.92	-	-	11/4/2013	DESTROYED 1" COPPER DISK STAMPED "ODOT CONTROL 527" IN CONC. WALK	ST. HWY. 138-015
528	138335.495	159132.435	463.53	-	-	11/4/2013	DESTROYED 1" COPPER DISK STAMPED "ODOT CONTROL 528" IN CONC. WALK	ST. HWY. 138-015
529	138257.045	159142.400	462.36	-	-	11/4/2013	DESTROYED 1" COPPER DISK STAMPED "ODOT CONTROL 529" IN CONC. WALK	ST. HWY. 138-015
530	138218.261	159229.825	459.47	-	-	11/4/2013	DESTROYED 1" COPPER DISK STAMPED "ODOT CONTROL 530" IN CONC. WALK	ST. HWY. 138-015
531	138263.789	159283.174	-	-	-	11/8/2013	FD. MAG. NAIL AND WASHER STAMPED "ODOT 531"	ST. HWY. 138-015

SET R/W MONUMENTS								
PT. NO.	OCRS NORTHING	OCRS EASTING	ELEVATION	STATION	OFFSET (- IS LEFT)	DATE	DESCRIPTION	REFERENCE
5042	138335.786	159292.117	-	"W"2"17+89.00	36.00	-	CALCULATED POINT - FALLS ON FIRE HYDRANT	-
5043	138354.853	159258.408	-	"W"2"18+23.00	48.00	1/30/2018	SET 5/8" X 30" IRON REBAR WITH 2" ALUMINUM CAP STAMPED "ODOT RIGHT OF WAY" 0.1' BELOW GROUND	-
5044	138361.481	159206.418	-	"W"2"18+71.76	48.00	1/30/2018	SET 2" ALUMINUM DISK STAMPED "ODOT RIGHT OF WAY" FLUSH WITH GROUND	-
5045	138250.376	159137.423	-	"O"19+30.78	-24.00	1/30/2018	SET 5/8" X 30" IRON REBAR WITH 2" ALUMINUM CAP STAMPED "ODOT RIGHT OF WAY" FLUSH WITH GROUND	-
5046	138252.254	159127.676	-	"O"19+41.62	-24.00	-	CALCULATED POINT - AREA NOT ACCESSIBLE	-
5047	138256.621	159124.243	-	"O"19+46.06	-20.25	1/30/2018	SET 2" ALUMINUM DISK STAMPED "ODOT RIGHT OF WAY" FLUSH WITH GROUND	-
5048	138256.314	159087.826	-	"O"19+85.36	-23.74	-	CALCULATED POINT - FALLS IN WALL AT FENCE/RAILING POST	-
5049	138256.193	159073.425	-	"H"20+00.00	-43.00	1/30/2018	SET 5/8" X 30" IRON REBAR WITH 2" ALUMINUM CAP STAMPED "ODOT RIGHT OF WAY" FLUSH WITH GROUND	-
5050	138256.993	158979.598	-	"H"20+93.83	-43.00	1/30/2018	SET 5/8" X 30" IRON REBAR WITH 2" ALUMINUM CAP STAMPED "ODOT RIGHT OF WAY" FLUSH WITH GROUND	-
5051	138261.429	158928.450	-	"H"21+38.52	-43.00	1/30/2018	SET 5/8" X 22" IRON REBAR WITH 2" ALUMINUM CAP STAMPED "ODOT RIGHT OF WAY" FLUSH WITH GROUND	-



RECORD DATA	
	ODOT R/W DRG. 88-22-1
<< >>	COUNTY ROAD PLAN: SC09 1974-027
NO	MEASURED/RESOLVED
BRACKET	SUPERCEDES RECORD

REGISTERED PROFESSIONAL LAND SURVEYOR  
*Marshall R. Wagstaff*  
 OREGON  
 JANUARY 9, 2001  
 MARSHALL R. WAGSTAFF  
 49476  
 EXPIRES: 6/30/2018

- POINT LEGEND**
- SET R/W MONUMENT
  - FOUND MONUMENT
  - ⊗ DESTROYED MONUMENT
  - △ FOUND NETWORK POINT
  - ⊗ DESTROYED NETWORK POINT
  - ◇ FOUND STRATEGIC POINT
  - ⊗ DESTROYED STRATEGIC POINT
  - CALCULATED POINT
- FOR MONUMENTS NOT SHOWN ON INDIVIDUAL SHEETS SEE SHEETS 1 AND 2  
 FOR LINE LEGEND SEE SHEET 1

**OREGON DEPARTMENT OF TRANSPORTATION**  
 RIGHT-OF-WAY BOUNDARY MONUMENTATION MAP  
 FFO - OR 138E: CORRIDOR SOLUTIONS (ROSEBURG) SECTION  
 NORTH UMPQUA HWY. NO. 138, OR138, M.P. -0.62 TO 0.57  
 DOUGLAS COUNTY  
 FILE: 13996RW.DGN :: RWM

FOR ODOT REGION 3  
 3500 NW. STEWART PKWY.  
 ROSEBURG, OR. 97470

APRIL 4, 2018  
 SCALE: 1" = 50'  
 SHEET 6 OF 8

ST HWY 138-016 F

NE1/4 Sec 24, T. 27 S., R. 6 W., W.M.

FILED

Date: 4-5-2018 By: JC

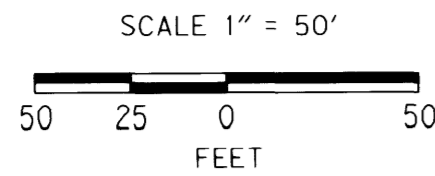
This survey consist of:

Map: ST HWY 138-016 A-H

Narrative:

Corner Rpt: DOUGLAS COUNTY SURVEYOR

RECORD DATA	
<< >>	COUNTY ROAD PLAN: SC09 1974-026
NO BRACKET	MEASURED/RESOLVED SUPERCEDES RECORD



SOUTH UMPQUA RIVER

OAK AVE.

FLINT ST.

PARROTT ST.

SPRUCE ST.

RAILROAD

VACATED RAILROAD RIGHT OF WAY

VACATED SHERIDAN ST.

SEC. 24, T. 27 S., R. 6 W.  
AARON ROSE D.L.C. NO. 60

SEE SHEET 8

SEE SHEET 3

SEE SHEET 6

RECOVERED MONUMENTS									
PT. NO.	O.CRS	NORTHING	O.CRS EASTING	ELEVATION	STATION	OFFSET (- IS LEFT)	DATE	DESCRIPTION	REFERENCE
1120	137379.212	160277.518	-	-	"0"4+50.37	32.12	4/25/2012	FD. 1-1/4" YELLOW PLASTIC CAP STAMPED "R. BROWN PLS 2391" 0.2 FT BELOW SURFACE GOOD CONDITION	MI 46-14B
1121	137410.152	160219.307	-	-	"0"5+16.29	32.47	4/25/2012	FD. 1-1/4" YELLOW PLASTIC CAP STAMPED "R. BROWN PLS 2391" FLUSH WITH TOP OF CONCRETE BLOCK WALL GOOD CONDITION	MI 46-14B
1122	137438.461	160166.032	-	-	"0"5+76.62	32.78	4/3/2012	DESTROYED 1 1/4" YELLOW PLASTIC CAP STAMPED "R. BROWN PLS 2391" 0.3 FT BELOW SURFACE GOOD CONDITION	MI 46-14B
1123	137585.097	160243.210	-	-	-	-	4/3/2012	DESTROYED 5/8" IRON ROD 0.1 FT. BELOW SURFACE GOOD CONDITION	MI 46-14B
1127	137744.424	159937.577	-	-	-	-	4/26/2012	FD. 1 1/4" YELLOW PLASTIC CAP STAMPED "R. BROWN PLS 2391" FLUSH WITH SURFACE GOOD CONDITION	MI 46-14B
1128	137668.137	160083.918	-	-	-	-	4/25/2012	FD. 1 1/4" YELLOW PLASTIC CAP STAMPED "R. BROWN PLS 2391" 0.4 FT BELOW SURFACE GOOD CONDITION	MI 46-14B
1129	137522.177	160008.584	-	-	"0"7+54.94	33.75	4/25/2012	FD. 1 1/4" YELLOW PLASTIC CAP STAMPED "R. BROWN PLS 2391" BENT SLIGHTLY WEST TIED AT TOP 0.2 FT BELOW SURFACE FAIR CONDITION	MI 46-14B
1130	137522.622	160008.918	-	-	"0"7+54.85	34.30	4/25/2012	FD. 1" O.D. IRON PIPE 0.1 FT. BELOW SURFACE GOOD CONDITION	UNKNOWN
1131	137550.630	159955.024	-	-	"0"8+15.59	34.06	4/25/2012	FD. 1" O.D. IRON PIPE 0.3 FT. BELOW SURFACE GOOD CONDITION	M4-64
1133	137356.198	160316.058	-	-	"0"4+05.55	29.65	1/31/2018	RESET 2" ALUMINUM DISK STAMPED "ODOT RESET" FLUSH WITH GROUND IN ORIGINAL POSITION	M131-20
1134	137309.920	160274.997	-	-	"0"4+20.40	-30.41	1/31/2018	RESET 2" ALUMINUM DISK STAMPED "ODOT RESET" FLUSH WITH GROUND IN ORIGINAL POSITION	M131-20
1135	137388.841	160124.827	-	-	"0"5+90.05	-30.30	4/3/2012	FD. CHISELED "X" IN CONCRETE RETAINING WALL FADED OUT FAIR CONDITION	VOL. 2, PG. 10
1139	137133.601	160012.193	-	-	-	-	4/3/2012	FD. 5/8" IRON ROD WITH REMAINS OF YELLOW PLASTIC CAP STAMPED "RAND PLS" SOME MARKS NOT READABLE 0.3 FT BELOW SURFACE FAIR CONDITION	M98-17
1141	137378.874	159978.262	-	-	-	-	4/25/2012	FD. 1-1/2" SQUARE IRON ROD FLUSH WITH SURFACE GOOD CONDITION	MI6-14

CONTROL MONUMENTS									
PT. NO.	O.CRS	NORTHING	O.CRS EASTING	ELEVATION	STATION	OFFSET (- IS LEFT)	DATE	DESCRIPTION	REFERENCE
16	137452.346	160019.483	456.36	-	"0"7+12.84	-23.02	4/19/2012	DESTROYED 1" COPPER DISK STAMPED "ODOT CONTROL 16" FLUSH WITH CONCRETE SIDEWALK	ST. HWY. 138-015

SET R/W MONUMENTS									
PT. NO.	O.CRS	NORTHING	O.CRS EASTING	ELEVATION	STATION	OFFSET (- IS LEFT)	DATE	DESCRIPTION	REFERENCE
4002	137366.004	160323.992	-	-	"0"4+03.08	42.02	1/30/2018	SET 5/8" X 30" IRON REBAR WITH 2" ALUMINUM CAP STAMPED "ODOT RIGHT OF WAY" FLUSH WITH GROUND	-
4003	137395.956	160290.404	-	-	"0"4+46.74	52.93	1/30/2018	SET 5/8" X 30" IRON REBAR WITH 2" ALUMINUM CAP STAMPED "ODOT RIGHT OF WAY" 0.1' BELOW GROUND	-
4028	137300.572	160259.255	-	-	"0"4+30.00	-46.00	-	CALCULATED POINT - CLOSE TO TRACKS	-
4029	137344.943	160209.133	-	-	"0"4+95.00	-30.00	1/30/2018	SET 5/8" X 30" IRON REBAR WITH 2" ALUMINUM CAP STAMPED "ODOT RIGHT OF WAY" FLUSH WITH GROUND	-
4044	137472.546	160095.093	-	-	"0"6+55.27 "SP"103+00.00	30.00 -46.96	1/30/2018	SET 2" ALUMINUM DISK STAMPED "ODOT RIGHT OF WAY" FLUSH WITH GROUND	-
4045	137472.742	160112.780	-	-	"SP"103+12.00	-35.00	1/30/2018	SET 5/8" X 30" IRON REBAR WITH 2" ALUMINUM CAP STAMPED "ODOT RIGHT OF WAY" FLUSH WITH GROUND	-
4046	137490.319	160133.021	-	-	"SP"103+36.98	-35.00	1/30/2018	SET 5/8" X 30" IRON REBAR WITH 2" ALUMINUM CAP STAMPED "ODOT RIGHT OF WAY" FLUSH WITH GROUND	-
4047	137518.305	160167.005	-	-	"SP"103+81.00	-35.00	1/30/2018	SET 5/8" X 30" IRON REBAR WITH 2" ALUMINUM CAP STAMPED "ODOT RIGHT OF WAY" FLUSH WITH GROUND	-
4048	137652.178	160276.428	-	-	"SP"105+68.79	-35.00	1/30/2018	SET 5/8" X 30" IRON REBAR WITH 2" ALUMINUM CAP STAMPED "ODOT RIGHT OF WAY" FLUSH WITH GROUND	-
4050	137570.900	160304.108	-	-	"SP"105+13.48	31.00	1/30/2018	SET 5/8" X 24" IRON REBAR WITH 2" ALUMINUM CAP STAMPED "ODOT RIGHT OF WAY" 0.1' BELOW GROUND	-
4051	137621.199	160334.706	-	-	"SP"105+68.79	31.00	1/30/2018	SET 5/8" X 22" IRON REBAR WITH 2" ALUMINUM CAP STAMPED "ODOT RIGHT OF WAY" FLUSH WITH GROUND	-
4104	137300.654	160266.911	-	-	"0"4+23.26	-42.37	1/30/2018	SET 5/8" X 30" IRON REBAR WITH 2" ALUMINUM CAP STAMPED "ODOT RIGHT OF WAY" FLUSH WITH GROUND	-

P.E. = PERMANENT EASEMENT

- POINT LEGEND**
- SET R/W MONUMENT
  - FOUND MONUMENT
  - ⊗ DESTROYED MONUMENT
  - ⊗ DESTROYED NETWORK POINT
  - CALCULATED POINT

FOR MONUMENTS NOT SHOWN ON INDIVIDUAL SHEETS SEE SHEETS 1 AND 2  
FOR LINE LEGEND SEE SHEET 1

REGISTERED PROFESSIONAL LAND SURVEYOR  
*Marshall R. Wagstaff*  
OREGON  
JANUARY 9, 2001  
MARSHALL R. WAGSTAFF  
49476  
EXPIRES: 6/30/2018

SI FEET  
**T**  
OREGON DEPARTMENT OF TRANSPORTATION  
RIGHT-OF-WAY BOUNDARY MONUMENTATION MAP  
FFO - OR 138E: CORRIDOR SOLUTIONS (ROSEBURG) SECTION  
NORTH UMPQUA HWY. NO. 138, OR138, M.P. -0.62 TO 0.57  
DOUGLAS COUNTY  
FILE: 13996RW.DGN :: RWM

FOR ODOT REGION 3  
3500 NW. STEWART PKWY.  
ROSEBURG, OR. 97470

APRIL 4, 2018  
SCALE: 1" = 50'  
SHEET 7 OF 8

ST HWY 138-016 G

RECOVERED MONUMENTS									
PT. NO.	OCRS	NORTHING	OCRS EASTING	ELEVATION	STATION	OFFSET (- IS LEFT)	DATE	DESCRIPTION	REFERENCE
1112	138009.163	160726.546	-	-	-	-	4/25/2012	FD. 1-1/4" O.D. IRON PIPE 0.2 FT. ABOVE SURFACE GOOD CONDITION	RMC-24
1113	137927.068	160754.008	-	-	-	-	1/31/2018	RESET 2" ALUMINUM DISK STAMPED "ODOT RESET" FLUSH WITH GROUND IN ORIGINAL POSITION	MI46-14B
1114	138043.722	160531.264	-	-	-	-	4/3/2012	DESTROYED 1 1/4" YELLOW PLASTIC CAP STAMPED "R. BROWN PLS 2391" FD. IN CONCRETE SIDEWALK GOOD CONDITION	MI46-14B
1115	137921.770	160466.870	-	-	-	-	4/3/2012	FD. 1-1/4" YELLOW PLASTIC CAP STAMPED "R. BROWN PLS 2391" FD. FLUSH IN AC. SURFACE ALONG SPRUCE STREET GOOD CONDITION	MI46-14B
1116	137912.447	160484.527	-	-	-	-	4/2/2012	FD. 1-1/4" YELLOW PLASTIC CAP STAMPED "R. BROWN PLS 2391" FD. IN AC. SURFACE GOOD CONDITION	MI46-14B
1117	137618.793	160537.471	-	-	"ML"26+85.87	-30.16	1/31/2018	RESET 5/8" X 30" IRON REBAR WITH 2" ALUMINUM CAP STAMPED "ODOT RESET" 0.1' BELOW SIDEWALK IN ORIGINAL POSITION	MI46-14B
1118	137632.115	160496.772	-	-	"ML"26+71.64	30.11	1/31/2018	RESET 5/8" X 10" IRON REBAR IN CONCRETE WITH 2" ALUMINUM CAP STAMPED "ODOT RESET" FLUSH WITH GROUND IN ORIGINAL POSITION	MI46-14B
1119	137698.088	160371.386	-	-	"ML"25+29.96	30.23	4/25/2012	DESTROYED 1 1/4" YELLOW PLASTIC CAP STAMPED "R. BROWN PLS 2391" FD. FLUSH IN TOP OF CONC. CURB AT SE CORNER OF INTERSECTION OF SPRUCE AND WASHINGTON	MI46-14B
1124	137704.746	160307.083	-	-	"ML"24+69.97	54.34	4/3/2012	FD. 1-1/4" YELLOW PLASTIC CAP STAMPED "R. BROWN PLS 2391" 0.1 FT BELOW SURFACE GOOD CONDITION	MI46-14B
1125	137815.730	160096.923	-	-	"ML"22+32.31	54.19	4/26/2012	FD. 1-1/4" YELLOW PLASTIC CAP STAMPED "R. BROWN PLS 2391" 0.2 FT BELOW SURFACE GOOD CONDITION	MI46-14B
1126	137845.118	160022.076	-	-	"ML"21+52.39	63.10	4/26/2012	FD. 5/8" IRON REBAR BENT SOUTH 0.2 FT ABOVE SURFACE TIED WHERE ROD ENTERS GROUND FAIR CONDITION	MI46-14B
1132	137608.790	160536.056	-	-	"ML"27+17.27	32.42	11/12/2013	RESET 2" ALUMINUM DISK STAMPED "ODOT RESET" FLUSH WITH GROUND IN ORIGINAL POSITION	MI31-20
1165	137738.823	160358.954	-	-	"ML"24+99.96	0.00	5/20/2012	FD. 1-1/4" SQUARE HEAD BOLT IN 9 1/2" DIAMETER MONUMENT BOX 1.2 FT BELOW SURFACE AT INTERSECTION OF SPRUCE AND WASHINGTON STREETS	CS 39/85

CONTROL MONUMENTS									
PT. NO.	OCRS	NORTHING	OCRS EASTING	ELEVATION	STATION	OFFSET (- IS LEFT)	DATE	DESCRIPTION	REFERENCE
9	138072.514	160510.512	449.27	-	-	-	4/19/2012	DESTROYED 5/8" X 30" IRON REBAR WITH A 1 1/2" BRASS CAP STAMPED "ODOT CONTROL 9"	ST. HWY. 138-015
13	137747.166	160392.978	456.07	-	"ML"25+26.17	-23.25	4/19/2012	DESTROYED 1" COPPER DISK STAMPED "ODOT CONTROL 13" FLUSH WITH CONCRETE SIDEWALK	ST. HWY. 138-015
13R	137746.214	160403.664	456.56	-	"ML"25+36.06	-27.39	7/13/2015	DESTROYED 1" COPPER DISK STAMPED "ODOT CONTROL 13R" FLUSH WITH CONCRETE SIDEWALK TIED USING 3 POINT RESECTION	ST. HWY. 138-015
14	137853.049	160133.802	461.45	-	"ML"22+47.52	3.97	4/19/2012	DESTROYED 5/8" X 30" IRON REBAR WITH A 1 1/2" BRASS CAP STAMPED "ODOT CONTROL 14"	ST. HWY. 138-015
525	137859.805	159990.544	449.30	-	"ML"21+17.65	64.81	11/12/2013	FD. 1" COPPER DISK STAMPED "ODOT CONTROL 525" IN CONC. WALK	ST. HWY. 138-015
526	137950.028	160214.498	446.60	-	-	-	11/12/2013	FD. 1" COPPER DISK STAMPED "ODOT CONTROL 526" IN CONC. WALK	ST. HWY. 138-015

SET R/W MONUMENTS									
PT. NO.	OCRS	NORTHING	OCRS EASTING	ELEVATION	STATION	OFFSET (- IS LEFT)	DATE	DESCRIPTION	REFERENCE
4049	137705.864	160304.966	-	-	"SP"106+29.59	-35.00	1/30/2018	SET 5/8" X 30" IRON REBAR WITH 2" ALUMINUM CAP STAMPED "ODOT RIGHT OF WAY" FLUSH WITH GROUND	-
4052	137696.568	160374.770	-	-	"SP"106+54.15	31.00	1/30/2018	SET 5/8" X 30" IRON REBAR WITH 2" ALUMINUM CAP STAMPED "ODOT RIGHT OF WAY" FLUSH WITH GROUND	-
4053	137695.303	160551.871	-	-	"ML"26+90.91	-51.48	1/30/2018	SET 2" ALUMINUM DISK STAMPED "ODOT RIGHT OF WAY" FLUSH WITH CONCRETE	-
4054	137659.031	160593.899	-	-	"ML"27+45.00	-39.00	1/30/2018	SET 5/8" X 30" IRON REBAR WITH 2" ALUMINUM CAP STAMPED "ODOT RIGHT OF WAY" FLUSH WITH GROUND	-
4055	137651.070	160589.701	-	-	"ML"27+45.00	-30.00	1/30/2018	SET 5/8" X 30" IRON REBAR WITH 2" ALUMINUM CAP STAMPED "ODOT RIGHT OF WAY" 0.1' BELOW GROUND	-
4056	137915.632	160478.494	-	-	"DO"14+59.27	167.95	1/30/2018	SET 2" ALUMINUM DISK STAMPED "ODOT RIGHT OF WAY" FLUSH WITH GROUND	-
4057	138011.041	160524.372	-	-	"DO"14+55.64	62.15	1/30/2018	SET 2" ALUMINUM DISK STAMPED "ODOT RIGHT OF WAY" FLUSH WITH GROUND	-
4058	138024.966	160567.071	-	-	"DO"14+87.00	30.00	-	CALCULATED POINT - AT WALL FACE ANGLE POINT	-
4068	137987.973	160807.206	-	-	"DO"17+16.89	-48.65	1/30/2018	SET 5/8" X 30" IRON REBAR WITH 2" ALUMINUM CAP STAMPED "ODOT RIGHT OF WAY" FLUSH WITH GROUND	-
4069	137983.419	160825.270	-	-	"DO"17+35.00	-53.00	-	CALCULATED POINT - CLOSE TO TRACKS	-
4070	137969.710	160840.667	-	-	"DO"17+55.00	-48.00	-	CALCULATED POINT - CLOSE TO TRACKS	-
4073	137923.038	160750.493	-	-	"DO"16+96.78	35.18	1/29/2018	SET 5/8" X 30" IRON REBAR WITH 2" ALUMINUM CAP STAMPED "ODOT RIGHT OF WAY" 0.5' BELOW GROUND	-
4074	137909.093	160758.116	-	-	"DO"17+10.00	44.00	-	CALCULATED POINT - CLOSE TO TRACKS	-
4075	137892.178	160777.478	-	-	"DO"17+35.00	50.00	-	CALCULATED POINT - CLOSE TO TRACKS	-
5052	138340.881	159298.025	-	-	"ML"2"17+84.81	42.35	1/30/2018	SET 2" ALUMINUM DISK STAMPED "ODOT RIGHT OF WAY" FLUSH WITH GROUND	-
5053	138336.757	159302.448	-	-	"ML"2"17+79.93	39.44	1/30/2018	SET 2" ALUMINUM DISK STAMPED "ODOT RIGHT OF WAY" FLUSH WITH GROUND	-
5054	138334.292	159306.149	-	-	"ML"2"17+76.03	38.00	1/30/2018	SET 2" ALUMINUM DISK STAMPED "ODOT RIGHT OF WAY" FLUSH WITH GROUND	-
5055	138306.847	159357.549	-	-	"ML"2"17+22.00	27.80	1/30/2018	SET 2" ALUMINUM DISK STAMPED "ODOT RIGHT OF WAY" FLUSH WITH GROUND	-
5056	138301.425	159355.489	-	-	"ML"2"17+22.00	22.00	1/30/2018	SET 5/8" X 30" IRON REBAR WITH 2" ALUMINUM CAP STAMPED "ODOT RIGHT OF WAY" 0.1' BELOW GROUND	-
5058	138399.006	159147.097	-	-	"ML"2"19+29.50	81.99	1/30/2018	SET 2" ALUMINUM DISK STAMPED "ODOT RIGHT OF WAY" FLUSH WITH GROUND	-
5059	138399.128	159143.397	-	-	"ML"2"19+33.00	82.00	1/30/2018	SET 5/8" X 30" IRON REBAR WITH 2" ALUMINUM CAP STAMPED "ODOT RIGHT OF WAY" 0.1' ABOVE GROUND IN BUSH	-
5060	138346.651	159141.827	-	-	"ML"2"19+33.00	29.50	1/30/2018	SET 5/8" X 30" IRON REBAR WITH 2" ALUMINUM CAP STAMPED "ODOT RIGHT OF WAY" 0.1' ABOVE GROUND IN BUSH (BEGIN ACCESS CONTROL)	-
5061	138342.269	159137.629	-	-	"ML"2"19+37.00	25.00	1/30/2018	SET 5/8" X 25" IRON REBAR WITH 2" ALUMINUM CAP STAMPED "ODOT RIGHT OF WAY" 0.1' BELOW GROUND	-
5062	138342.580	159124.451	-	-	"ML"2"19+50.00	25.00	1/30/2018	SET 5/8" X 30" IRON REBAR WITH 2" ALUMINUM CAP STAMPED "ODOT RIGHT OF WAY" FLUSH WITH GROUND	-
5063	138339.580	159124.391	-	-	"ML"2"19+50.00	22.00	1/30/2018	SET 2" ALUMINUM DISK STAMPED "ODOT RIGHT OF WAY" FLUSH WITH GROUND	-

- POINT LEGEND**
- SET R/W MONUMENT
  - FOUND MONUMENT
  - ⊗ DESTROYED MONUMENT
  - △ FOUND NETWORK POINT
  - ⊗ DESTROYED NETWORK POINT
  - ◇ FOUND STRATEGIC POINT
  - ⊗ DESTROYED STRATEGIC POINT
  - CALCULATED POINT

FOR MONUMENTS NOT SHOWN ON INDIVIDUAL SHEETS SEE SHEETS 1 AND 2

FOR LINE LEGEND SEE SHEET 1

P.E. = PERMANENT EASEMENT

SOUTH UMPQUA RIVER

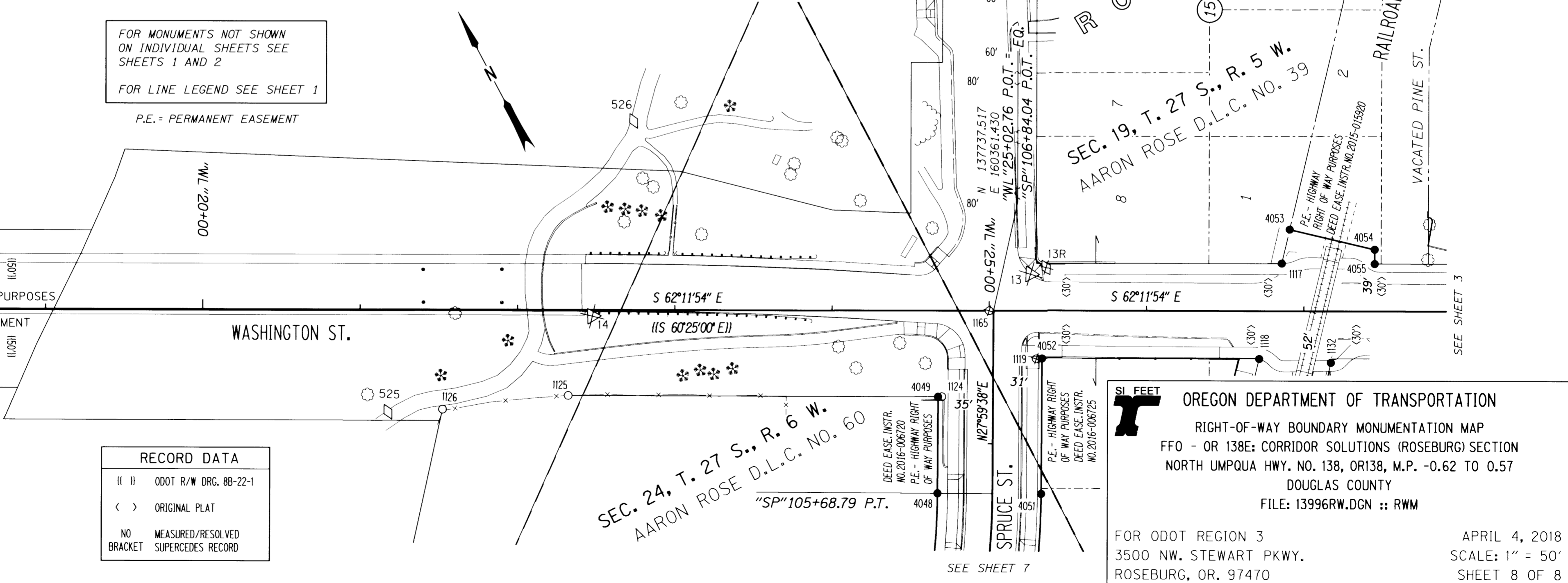
REGISTERED PROFESSIONAL LAND SURVEYOR

*Marshall R. Wagstaff*

OREGON JANUARY 9, 2001 MARSHALL R. WAGSTAFF 49476 EXPIRES: 6/30/2018

**RECORD DATA**

(I I)	ODOT R/W ORG. 88-22-1
< >	ORIGINAL PLAT
NO BRACKET	MEASURED/RESOLVED SUPERCEDES RECORD



FILED

NW1/4 Sec 19, T. 27 S., R. 5 W., W.M.  
NE1/4 Sec 24, T. 27 S., R. 6 W., W.M.

Date: 4-5-2018 By: JC

This survey consist of:  
Map: ST HWY 138-016 A-H

Narrative:

Corner Rpt: DOUGLAS COUNTY SURVEYOR

SCALE 1" = 50'

50 25 0 50 FEET

**OREGON DEPARTMENT OF TRANSPORTATION**

RIGHT-OF-WAY BOUNDARY MONUMENTATION MAP

FFO - OR 138E CORRIDOR SOLUTIONS (ROSEBURG) SECTION

NORTH UMPQUA HWY. NO. 138, OR138, M.P. -0.62 TO 0.57

DOUGLAS COUNTY

FILE: 13996RW.DGN :: RWM

FOR ODOT REGION 3  
3500 NW. STEWART PKWY.  
ROSEBURG, OR. 97470

APRIL 4, 2018  
SCALE: 1" = 50'  
SHEET 8 OF 8

**ST HWY 138-016 H**